

Context Map

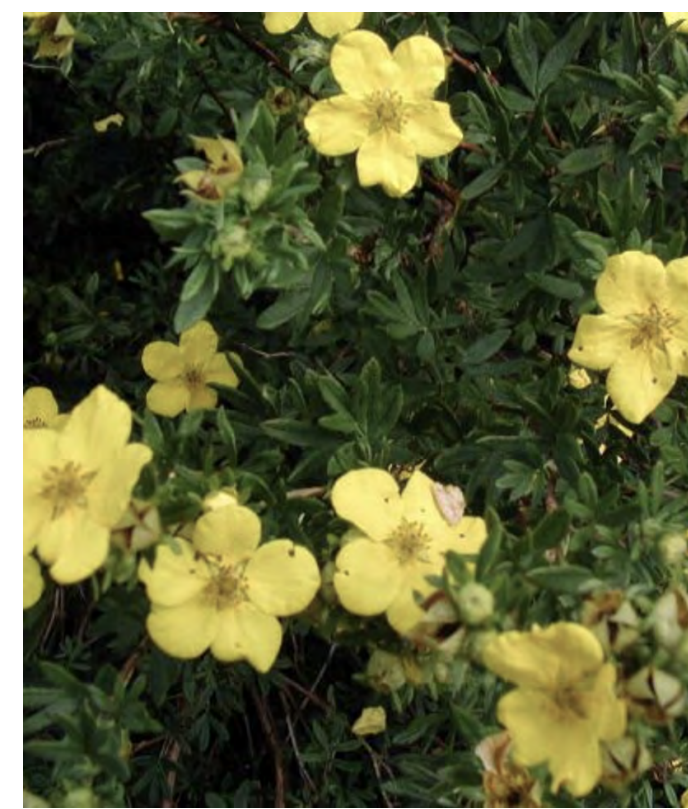
Town of Westport GIS - nts



PLANT LIST >

QTY	KEY	BOTANICAL NAME	COMMON NAME	SIZE	NOTE
TREES					
3	AG	<i>Amelanchier x. grandiflora</i> 'Autumn Brilliance'	Serviceberry	8 -10'	native: bees, cedar waxwings
1	QA	<i>Quercus alba</i>	White Oak	1 – 1 ½" cal.	native: birds, mammals
SHRUB					
7	CA	<i>Clethra alnifolia</i> 'Hummingbird'	Summersweet	5 gal	native: butterflies, hummingbirds
10	PF	<i>Potentilla fruticosa</i> 'Fargo'	Dakota Potentilla	3 gal	native: butterflies, pollinating insects
7	RA	<i>Rhus aromatica</i> 'Gro-low'	Gro-low sumac	3 gal	native: butterfly host, birds
5	VA	<i>Vaccinium angustifolium</i>	Low Bush Blueberry	5 gal	native: birds, mammals, turtles
7	VD	<i>Viburnum dentatum</i> 'Blue Muffin'	Arrowwood	5 gal	native: pollinators, birds, butterflies
PERENNIALS & GRASSES					
10	EPB	<i>Echinacea purpurea</i>	Purple Coneflower	1 gal	native: bees, birds, butterflies

X Remove existing ornamental plant



POTENTILLA FRUTICOSE 'FARGO'



AMELANCHIER 'AUTUMN BRILLIANCE'



VACCINIUM ANDGUSTIFOLIUM



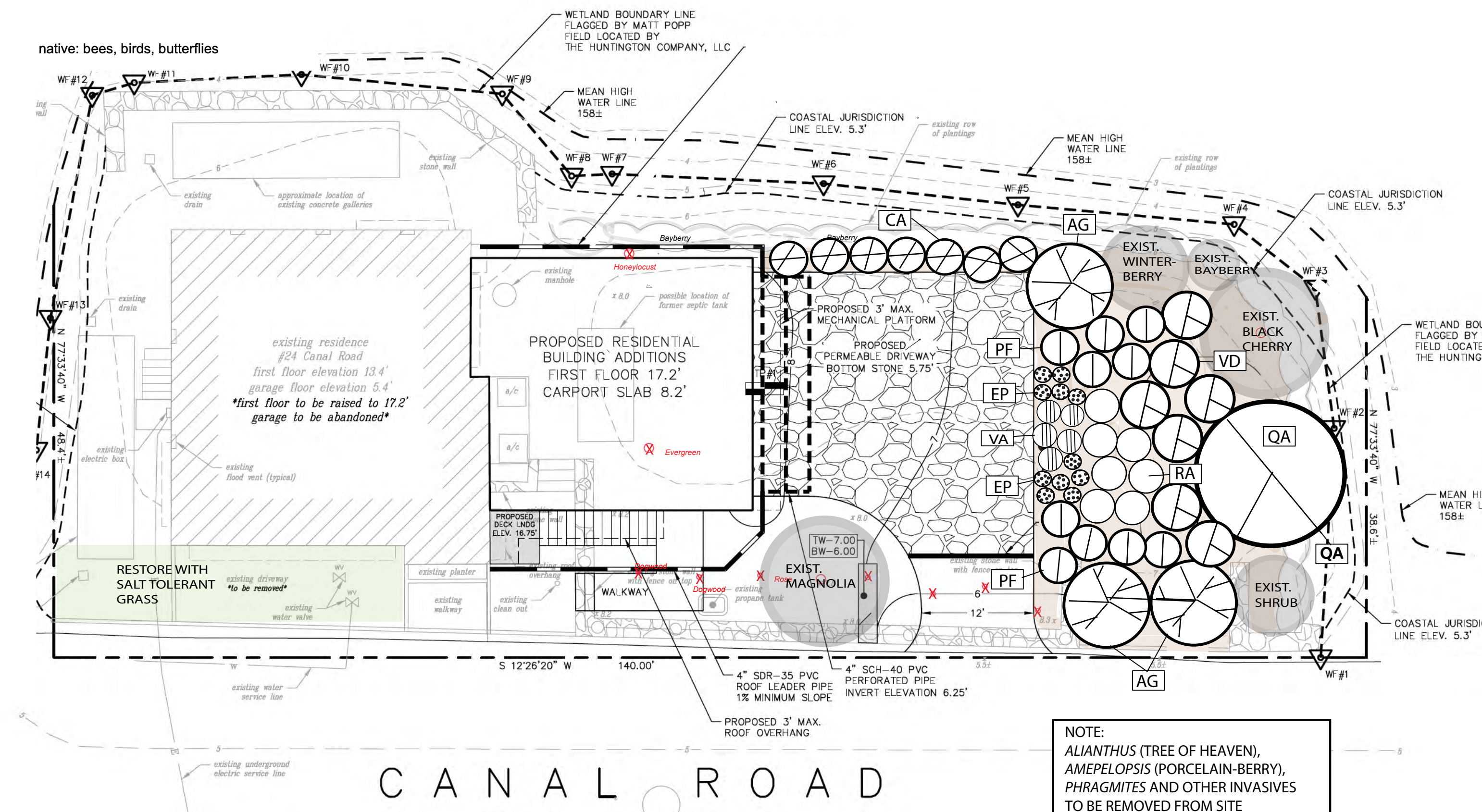
VIBURNUM DENTATUM 'BLUE MUFFIN'



ECHINEACEA PURPUREA 'MAGNUS'



RHUS AROMATICA 'GRO-LOW'



NOTE:
ALIANTHUS (TREE OF HEAVEN),
AMEPELOPSIS (PORCELAIN-BERRY),
PHRAGMITES AND OTHER INVASIVES
TO BE REMOVED FROM SITE



moon gardens
designs + consulting

Conservation & CAM Landscape Plan
for
Heidi Schoeneck & Phil Benjamin
White

24 Canal Road, Westport CT

Date: 5.18.2023 Rev 6.19.23
Base Plan prepared by:
Kousidis Engineering, LLC
last revised 5.16.2023