



WESTPORT CONNECTICUT

PARKS AND RECREATION DEPARTMENT
LONGSHORE CLUB PARK
260 COMPO ROAD SOUTH, WESTPORT, CT 06880

MEMO TO: Long Lots Building Committee
CC: Parks and Recreation Commission
MEMO FROM: Jennifer A. Fava, Director of Parks and Recreation
DATE: September 22, 2023
RE: **Property Review and Usage**



Per your request, the department has conducted a review of the properties under our management including current usage and the potential locations for fields and gardens other than the Long Lots Elementary School complex.

The attached Property Review provides a listing of properties managed and maintained by the Parks and Recreation Department, the zoning code, the potentially usable acreage, the type of property, usage, and comments as they may relate to fields and the gardens.

Fields

Layouts of the fields at locations maintained and managed by the department are attached. As these visually show, many of our fields are layered upon one another, and/or the use of one field conflicts with the use of another field so that they cannot be used at the same time. This limits the number of fields that can be used at any given time. This also demonstrates the heavy demand placed upon our fields.

Below is a table indicating the typical participation numbers that utilize the fields throughout the town within a given year.

Group Participation Numbers

*Excludes school teams & PE usage, in town non-P&R adult leagues, and rentals

Group	Fall 2022	Spring 2023	Summer 2023
WBSA	536	896	175
PAL Football	614	42	86
PAL Cheer	21	-	-
PAL Boys Lax	136	366	-
PAL Girls Lax	234	307	-
PAL Rugby	-	44	-
PAL Track	140	82	9
WSA	1,784	1,685	-
Continuing Education	-	-	880
Parks & Recreation	148	273	2,910

TOTAL = 11,368 participants

In addition to maintaining the fields throughout town, the Parks and Recreation Department manages the scheduling of all fields. The department assigns blocks of time for use of the fields to the various user groups, and then the individual groups manage their allotted time blocks. As can be seen by the table above, more than 11,000 participants utilize the fields. The typical combined hours of usage per week is approximately 1,154 hours in the spring, 1,003 hours in the fall, and up to 359 hours in the summer. The fields are clearly in high demand and are heavily utilized. (Please note that hours of use are in general/typical and are not exact as final usage may vary.)

The schools have use of their fields throughout the school day, and the school athletic programs have priority use of all fields located at schools from 2:30pm – 5:30pm.

Years ago, sports were played during one specific season. Currently all sports are taking place year-round, causing increased demand, and greater need, to share field space. Over the past several years, we have also experienced the user groups routinely requesting additional space for fields as they see increased demand for their programs. There has also been increased utilization from the boys and girls High School sports with the addition of girls rugby, and the adult sports leagues (baseball, soccer, and lacrosse) have also increased in their enrollment and therefore, field usage. We can also anticipate that with the increase in school enrollment, there will potentially be a correlating increase in the demand for youth sports of all levels.

The topic of the need for the 90 ft baseball field at Long Lots has been a discussion item at some of the Long Lots Building Committee meetings and the most recent parks and Recreation Commission meeting. The elimination of that field would be significant and would have a cascading effect on the use of other fields, especially in the spring season. The Long Lots baseball field is currently used in the fall on weekends by the Westport Baseball and Softball, and during the spring it is utilized by the Parks and Recreation Department during the week as well as the High School 3-4 times per week and by Westport Baseball and Softball on the weekends. We currently have four (4) baseball fields of this size and the loss of just one would have a significant impact to not only baseball, but other sports as well. If we lose any fields, it will be difficult to accommodate in-season and out-of-season sports. If this occurs, the out-of-season sport will most likely be eliminated or at a minimum, field availability would be dramatically reduced causing user groups to decrease or eliminate off-season programs. For example:

Fall: If there is no 90ft Long Lots baseball field, that usage would have to go to Doubleday but that usage conflicts with football. As football is the in-season sport, it would get use of the field and there would be no location to put the baseball/softball program.

Spring: If there is no 90 ft Long Lots baseball field, baseball usage would have to be moved to Doubleday which then conflicts with boys and girls lacrosse. All three (3) sports are in-season sports so all would be impacted with less field time.

We have looked at the possibility of increasing the size of an existing 60 ft baseball field to a 90 ft baseball field but have found no location that can accommodate the necessary size as well as additional hours of use. The only location that can fit the larger field would be the Doubleday softball field; however, it does not gain any additional usage at that location as it cannot be used simultaneously with the current 90 ft baseball field or current multipurpose field functions.

This same type of effect will occur with the loss of any field and will have a significant impact to all sports programs affecting the more than 11,000 participants that utilize these facilities.

In addition to the difficulty in being able to accommodate all the user groups, due to the heavy usage of our fields, we are unable to rest them and provide the appropriate level of maintenance to maintain the fields at the quality level we desire, and that the community deserves. The elimination of any number of fields, even just one, will negatively affect our ability to serve the community and meet its needs.

Gardens

The primary role of the Parks and Recreation Department as it relates to the Community Gardens is to check the list of members provided by the Community Gardens against the sex offender registry which is necessary as it is located on school property. Once cleared, we provide a photo ID for any of those members upon request. The photo ID is necessary to access the gardens during school hours. Not all members request an ID.

2023

Community Garden Members – 108
IDs Issued - 41

The Department also provides a link to the Community Gardens website on our webpage and must be notified of any upcoming work at the Long Lots Preserve for authorization to proceed. We have provided limited assistance with one off issues in the past.

Potential Field Locations

Lillian Wadsworth Arboretum – *(Concept Illustration Attached)*

- Would need to be rezoned
- Could potentially fit some fields including a 90 ft baseball field and some multipurpose fields
- Would require removal of forested area
- Significant earthwork needed due to topography
- Some ledge possible
- Wetlands may constrain development
- Would require paving over a significant amount of open space for parking
- No utilities on site

Winslow Park – *(Concept Illustration Attached)*

- Would need to be rezoned
- Difficult location due to traffic pattern. Entrance/exit would have to be at different location on Compo North.
- Could fit 1 large or 2-3 smaller multipurpose fields
- Would need to pave over significant portion to provide adequate parking. The more fields, the larger the parking area must be. Must also provide parking for regular park users.
- Unsuitable topography in most of the property
- Concept plan includes a 90 ft baseball field to illustrate that the area is not sufficient in size to allow for field buffer, access roads, and sufficient parking

Potential Garden Locations

Baron's South – *(Concept Illustration Attached)*

- Would need to be rezoned
- Potential location for Community Garden off cul-de-sac
- Parking available

Lillian Wadsworth Arboretum

- Would need to be rezoned
- Would require removal of forested area
- No utilities on site
- Would require additional parking

Riverside Park

- Would need to be rezoned
- Would require more parking

Winslow Park

- Would need to be rezoned
- Would need to increase parking
- Difficult traffic pattern

attachments

Property Review

Comments							
Property	Zoning Code	Acres	Type	Usage	Fields	Gardens	
"The Saugatuck" Athletic Field	A	1.54	Field	Not used	<ul style="list-style-type: none"> • Insufficient parking/access for use as field 	<ul style="list-style-type: none"> • Unavailable due to stipulation 	
32 Maplewood Ave.	A	0.53	Green Space	N/A	<ul style="list-style-type: none"> • Unsuitable • Too small 	<ul style="list-style-type: none"> • Unsuitable • Too small 	
38/40 Compo Mill Cove	A	0.05	Park	N/A	<ul style="list-style-type: none"> • Unsuitable • Too small • Lack of parking 	<ul style="list-style-type: none"> • Unsuitable • Too small • Lack of parking 	
Adams Academy	A	1.22	Historical Building	N/A	<ul style="list-style-type: none"> • Unsuitable • Too small • Difficult topography • Limited parking 	<ul style="list-style-type: none"> • Unsuitable • Too small • Limited parking 	
Baron's South	DSORD2	21.25	Open Space	N/A	<ul style="list-style-type: none"> • Would need to be rezoned • Unsuitable due to topography 	<ul style="list-style-type: none"> • Potential location for Community Gardens off cul-de-sac • Would need to be rezoned • Parking available 	
Burr Farms Fields	AA	3.7	Multiple Fields	Spring: (53 hrs/wk) M-F: 1:30pm - 8pm S/S: 9:30am - 8pm Fall: (43 hrs/wk) M-F: 1:30pm - 7:30pm Sat: 4pm - 7:30pm Sun: 10am - 7pm Summer: (8-18.75 hrs/wk) T/W: 3pm - 7pm (7 wks) M-F: 8:45am - 12:30pm (4 wks)	<ul style="list-style-type: none"> • No space for additional fields • Use of soccer field conflicts with use of baseball/softball fields 	<ul style="list-style-type: none"> • Insufficient size with existing fields 	
Burying Hill Beach	AAA	3.79	Beach/Park	N/A	<ul style="list-style-type: none"> • Unsuitable • Too small for fields • Not enough parking • Parking requires emblem or payment Memorial Day - Labor Day 	<ul style="list-style-type: none"> • Unsuitable • Parking requires emblem or payment Memorial Day - Labor Day 	
Canal Beach	A	0.22	Beach/Park	N/A	<ul style="list-style-type: none"> • Unsuitable • Too small • Lack of parking 	<ul style="list-style-type: none"> • Unsuitable • Too small • Lack of parking 	
Canal Green	A	1.4	Park	N/A	<ul style="list-style-type: none"> • Unsuitable • Too small • Lack of parking 	<ul style="list-style-type: none"> • Unsuitable • Too small • Lack of parking 	
Coleytown Elem. School	A	2.8 (Fields)	School/Fields	Spring: (79 hrs/wk) M-F: 3/4pm-8pm Sat: 9:30am-8pm Sun: 10am/12pm-8pm Fall: (73 hrs/wk) M-F: 3:30pm-7pm Sat: 8am-7pm Sun: 10am-6pm	<ul style="list-style-type: none"> • No space for additional baseball/softball fields • Possible space for small multipurpose field but use would conflict with baseball/softball 	<ul style="list-style-type: none"> • No suitable space 	
Coleytown Middle School	A	3.8 (Fields)	School/Fields	Spring: (88 hrs/wk) M-F: 4pm - 8pm Sat/Sun: 8am-8pm Fall: (78 hrs/wk) M-F: 4pm-7:30pm Sat: 8am - 6pm Sun: 12pm-7:30pm Summer: (30 hrs/wk) M-F: 9am - 3pm (7 wks)	<ul style="list-style-type: none"> • No space for additional fields • Unsuitable for baseball/softball fields • Fields currently layered - uses conflict 	<ul style="list-style-type: none"> • No suitable space 	
Compo Beach	A	29	Beach/Park	Spring: (16.5 hrs/wk) T, W Th: 6pm - 8pm Sat: 1pm - 3pm Sun: 9:30am-11am Fall: (12.5 hrs/wk) T, W, Th: 5pm-8pm Fri: 2pm-5:30pm Summer: (3-30 hrs/wk) M-F: 8am-3pm (7 wks) M-F: 9am - 12 pm (1 wk)	<ul style="list-style-type: none"> • Can add one 210' x 130' field but use conflicts with softball field • Parking requires emblem or payment May 1 - Sept 30 	<ul style="list-style-type: none"> • No suitable space • Parking requires emblem or payment May 1 - Sept 30 	

Property	Zoning Code	Acreage	Type	Usage	Fields	Comments	Gardens
Doubleday	A	4.3 (Fields)	School/Fields	Spring: (54.5 hrs/wk) M-F: 3:30pm-8pm S/S: 9:30am-8pm Fall: (62.5 hrs/wk) M, T: 3:30pm-8pm W: 4pm-8pm Th, F: 3:15pm-8pm Sat: 7am-11am Sun: 8am-6pm	<ul style="list-style-type: none"> No space for additional fields Use of multipurpose fields conflicts with baseball/softball fields 	<ul style="list-style-type: none"> No suitable space 	
Eloise Ray Park	A	0.17	Park	N/A	<ul style="list-style-type: none"> Unsuitable Too small No parking 	<ul style="list-style-type: none"> Unsuitable Too small No parking 	
Grace Salmon Park	AA	2 (Land Area)	Park	N/A	<ul style="list-style-type: none"> Unsuitable Too small Lack of parking 	<ul style="list-style-type: none"> Unsuitable Too small Lack of parking 	
Greens Farms	GBD	1.8 (Fields)	School/Fields	Spring: (53 hrs/wk) M: 6:30pm-8pm T-Th 3pm-8pm Fri: 5pm-10pm Sat: 7:30am-10pm Sun: 9:30am-6pm Fall: (50 hrs/wk) M: 4pm-10:30pm T: 4pm-8pm W: 4pm-7pm Th: 4pm-10pm F: 5pm-10pm Sat: 7am-8pm Sun: 9:30am-8pm Summer: (35 hrs/wk) M-F: 8am - 3pm (6 wks)	<ul style="list-style-type: none"> No space for additional fields Use of multipurpose field conflicts with baseball/softball field 	<ul style="list-style-type: none"> No suitable space 	
Hillspoint Fields	AA/A	2.46 (Fields)	School/Multiple Fields	Spring: (31.5 hrs/wk) M-F: 6pm - 8pm Sat: 9:30am - 8pm Sun: 9am - 8pm Fall: (25.5 hrs/wk) M-F: 5pm - 7pm Sat: 9am-6pm Sun: 9:30am-4pm	<ul style="list-style-type: none"> Unsuitable for additional fields due to topography Restricted hours of use 	<ul style="list-style-type: none"> No suitable space 	
Hitchcock Park	A	0.3	Park/Green Space	N/A	<ul style="list-style-type: none"> Unsuitable Too small Lack of parking 	<ul style="list-style-type: none"> Unsuitable Too small Lack of parking 	
Jesup Green	AA	1.1	Park/Green Space	N/A	<ul style="list-style-type: none"> Unsuitable Competing uses Too small Parking used for library & Downtown 	<ul style="list-style-type: none"> Unsuitable Competing uses 	
Levitt Pavilion	AA	0.44	Park/Green Space/Amphitheater	N/A	<ul style="list-style-type: none"> Unsuitable Too small Inappropriate topography Parking used for library 	<ul style="list-style-type: none"> Unsuitable Too small 	
Library Riverwalk	AA	0.59	Park/Green Space	N/A	<ul style="list-style-type: none"> Unsuitable Too small 	<ul style="list-style-type: none"> Unsuitable Too small 	
Lillian Wadsworth Arboretum	DOSRD 3	11.84	Open Space	N/A	<ul style="list-style-type: none"> Would need to be rezoned Fields possible Would require removal of forested area Significant earthwork needed due to topography Some ledge possible Would require paving over significant amount of open space for parking Wetlands may constrain development No utilities on site 	<ul style="list-style-type: none"> Would need to be rezoned Would require removal of forested area No utilities on site Would require additional parking 	

Property	Zoning Code	Acreage	Type	Usage	Fields	Gardens	Comments
Long Lots Elem.	AA/A	4.9 (Fields) 1.2 (Gardens)	School/Fields/Community Gardens	<p>Spring: Upper: (46 hrs/wk) M-F: 3pm - 8pm Sat: 9:30am-8pm Sun: 9:30am-8pm Lower: (38.5 hrs/wk) M-F: 4:30pm-8pm Sat: 8am-8pm Sun: 11am-8pm</p> <p>Fall: Upper: (37.5 hrs/wk) M-Th: 4pm-8pm Fri: 3:15pm-8pm Sat: 9am-3pm Sun: 9am-7:30pm Lower: (41.5 hrs/wk) M-F: 4pm-8pm Sat: 8am-7:30pm Sun: 10am-8pm</p> <p>Summer: (15 hrs/wk) Upper: M-F: 9am-12pm (2 wks) Lower: M-F: 9am-12pm (2 wks)</p>	<ul style="list-style-type: none"> No space for additional fields Upper - use of baseball field conflicts with multipurpose field. Upper soccer fields currently layered - uses conflict Unsuitable topography in rear portion of property 	<ul style="list-style-type: none"> Current location Restricted access 	
Longshore Club Park	AAA/AA	169	Park/Golf Course	N/A	<ul style="list-style-type: none"> Property already at capacity Some parking requires emblem Memorial Day - Labor Day 	<ul style="list-style-type: none"> Property already at capacity Some parking requires emblem Memorial Day - Labor Day 	
Luciano Park	GBD	0.85	Park/Ballfield	<p>Spring: (20.5 hrs/wk) T: 4pm-5pm W: 4pm-8pm F: 3pm-6:30pm Sat: 9am-5pm Sun: 10am-5pm</p> <p>Fall: (29.5 hrs/wk) M: 4pm-5pm T: 5pm-7:30pm W/Th: 4pm-7:30pm Sat: 9am-6pm Sun: 9am-7:30pm</p> <p>Summer: (3 hrs/wk) Sun: 9am - 1pm (7 wks)</p>	<ul style="list-style-type: none"> Too small for additional fields Limited/restricted parking 	<ul style="list-style-type: none"> Unsuitable Too small Limited/restricted parking 	
Machamux Park	AAA	1.5	Park/Green Space	N/A	<ul style="list-style-type: none"> Too small Poor site due to traffic pattern 	<ul style="list-style-type: none"> Too small Poor site due to traffic pattern 	
Old Hill Park		0.44	Traffic Island/Green Space	N/A	<ul style="list-style-type: none"> Unsuitable Too small 	<ul style="list-style-type: none"> Unsuitable Too small 	
Old Mill Beach	B	1.8	Beach	N/A	<ul style="list-style-type: none"> Unsuitable Too small Lack of parking Parking requires emblem May 1 - Sept 30 	<ul style="list-style-type: none"> Unsuitable Lack of parking Parking requires emblem May 1 - Sept 30 	
Pasacreta Park	A	1.27	Park	N/A	<ul style="list-style-type: none"> Unsuitable Too small Lack of parking 	<ul style="list-style-type: none"> Unsuitable 	
Partrick Park		0.3	Traffic Island/Green Space	N/A	<ul style="list-style-type: none"> Unsuitable Too small 	<ul style="list-style-type: none"> Unsuitable Too small 	
PJ Romano Field	A	3.25 (Field and Track)	School/Field	<p>Spring: (33.25 hrs/wk) M-F 5:30pm-8pm Sat: 10:15am - 8pm Sun: 9am-8pm</p> <p>Fall: (37.5 hrs/wk) M-F: 4pm-8pm Sat: 8am-5:30pm Sun: 9am-7pm</p> <p>Summer: 15 hrs/wk M-F: 9am - 12pm (7 wks)</p>	<ul style="list-style-type: none"> No space for additional fields Fields layered - uses conflict 	<ul style="list-style-type: none"> No suitable space 	
Riverside Park	DSORD3	6.49	Park/Open Space	N/A	<ul style="list-style-type: none"> Would need to be rezoned Would require significant earthwork due to topography Would require paving over significant amount of green space for parking 	<ul style="list-style-type: none"> Would need to be rezoned Would require more parking 	

Property	Zoning Code	Acres	Type	Usage	Fields	Comments	Gardens
Sherwood Mill Pond Reserve	DSORD1	0.97	Open Space	N/A		<ul style="list-style-type: none"> • Too small • Would need to be rezoned • Not enough space for parking 	<ul style="list-style-type: none"> • Too small • Would need to be rezoned • Not enough space for parking
St. John Place/Myrtle Ave Park	A	0.04	Park	N/A		<ul style="list-style-type: none"> • Too small 	<ul style="list-style-type: none"> • Too small
Staples Complex	AAA/AA	8.5 (Fields and Track)	School/Fields	<p>Baseball/Soccer(Loeffler) Spring: (47 hrs/wk) M-F: 2:30-8pm Sat: 9:30am-8pm Sun: 9am-6pm Fall: (17.5 hrs/wk) M-F: 2:30pm-6pm</p> <p>Ginny Parker: Spring: (47.25 hrs/wk) M-F: 2:30pm-8pm Sat: 8am-8pm Sun: 8am-6pm Fall: (42.5 hrs/wk) M-F: 2:30pm-7pm S/S: 8am-6pm Summer: (6-17.5 hrs/wk) M-F: 8:30am - 12pm (2 wks) T,W,Th: 4:30pm - 6:30pm (6 wks)</p> <p>Stadium: Spring: (51.5 hrs/wk) M-F: 2:30pm-8pm Sat: 8am-8pm Sun: 10am-8pm Fall: (45 hrs/wk) M-F: 2:30pm-8pm Sat: 7am-4pm Sun: 9am-6pm Summer: (22.5 hrs/wk) M-F: 8:30am-11am (5 wks) M-F: 6pm-8pm (7 wks)</p> <p>Softball/Loeffler: Spring: (29.25 hrs/wk) M-F: 5:45pm-8pm S/S: 9am-6pm Fall- no play</p>	<ul style="list-style-type: none"> • No space for additional fields <p>Baseball/Softball/Loeffler: • Use of baseball, softball, soccer conflicts</p> <p>Ginny Parker: • LAX and field hockey use conflicts</p> <p>Stadium: • Football, LAX, rugby, track and field uses conflict</p>	<ul style="list-style-type: none"> • No suitable space 	
Straffolino Park	GBD	0.51	Green Space	N/A		<ul style="list-style-type: none"> • Unsuitable • Too small 	<ul style="list-style-type: none"> • Unsuitable • Too small
Town Farms	A	11.48	Fields/Courts	<p>Spring: (166 hrs/wk) M-F: 4:30pm-8pm S/S: 8am-8pm Fall: (166 hrs/wk) M-F: 4:30pm-8pm S/S: 8am-8pm</p>	<ul style="list-style-type: none"> • No space for additional fields 	<ul style="list-style-type: none"> • No suitable space 	
Town Hall	A	1.8 (Fields) .65 (Lawns and Beds)	Town Hall/Fields	<p>Spring: (80 hrs/wk) M: 1pm-3pm T: 1:30pm-2:30pm Th: 10am-12pm; 2pm-3pm F: 1pm-3pm M-F: 4:30pm-8pm Sat: 9:30am-8pm Sun: 9am-6pm Fall: (44 hrs/wk) M-F: 4pm - 6pm S/S: 12pm - 6pm Summer: (24 hrs/wk) M-Th: 9am-3pm (1wk)</p>	<ul style="list-style-type: none"> • No space for additional fields • Topography in front is unsuitable for fields 	<ul style="list-style-type: none"> • Unsuitable 	
Veterans Green	A	0.96	Park/Green Space	N/A		<ul style="list-style-type: none"> • Unsuitable • Too small • Insufficient parking 	<ul style="list-style-type: none"> • Unsuitable • Too small

Property	Zoning Code	Acreage	Type	Usage	Fields	Comments	Gardens
				<p>Wakeman A: Spring: (44 hrs/wk) M-F: 4pm-8pm S/S 8am-8pm Fall: (36 hrs/wk) M,T: 3pm-6pm W,Th: 3pm-7pm Sat: 7am-6pm Sun: 8am-6pm Summer: (17.5 hrs/wk) M-F: 8:30am -12pm (4 wks)</p> <p>Wakeman B: Spring: (47 hrs/wk) M-F: 3pm-8pm Sat: 8am-8pm Sun:10am-8pm Fall: (37.5 hrs/wk) M-F: 2:30pm-7pm Sat: 12pm-6pm Sun: 8am-5pm Summer: (15-30 hrs/wk) M-F: 9am - 3pm (2 wks) M-F: 9am - 12pm (2 wks) M-F: 8:30am -12pm (1 wk) T, W, Th: 5pm-8pm (5 wks)</p> <p>Wakeman C (Softball/multipurpose): Spring: (38.5 hrs/wk) M-F: 3pm -8pm Sat: 8am-8pm Sun: 10am-8pm Fall: (45 hrs/wk) M-F: 2:30pm-7pm Sat: 7am-7pm Sun:7:30am-6pm Summer: (35 hrs/wk) M-F: 8am-3pm (5 wks)</p> <p>Wakeman D: Spring: (45.5 hrs/wk) M-F: 3pm-8pm Sat: 9:30am-8pm Sun: 10am-8pm Fall: (33.5 hrs/wk) M-F: 3:30pm-7pm Sat: 9:30am-7pm Sun: 8am-6pm Summer: 35 hrs/wk) M-F: 8am -3pm (5 wks)</p> <p>Wakeman E: Spring: (44 hrs/wk) M-F: 3pm-8pm Sat:8am-7pm Sun:12pm-8pm Fall: (44 hrs/wk) M-F: 2:30pm-7pm Sat:7:30am-7pm Sun: 8am-8pm Summer: (17.5-30 hrs/wk) M-F: 9am-3pm (3 wks) M-F: 8:30am-12pm (2 wks)</p>			
Wakeman Park	AAA/AA	15.2 (Fields)	Fields		<ul style="list-style-type: none"> No space for additional fields 		
					<p>Wakeman A: • Layered fields - uses conflict</p> <p>Wakeman B: • Layered fields - uses conflict</p> <p>Wakeman C: • Softball and multipurpose uses conflict</p> <p>Wakeman E: • Layered fields - uses conflict</p>		•No suitable space
Winslow Park	DSORD1	29.5	Park/Open Space	N/A	<ul style="list-style-type: none"> Would need to be rezoned Difficult location due to traffic pattern (Post Road/Compo Road North) Could fit 1 large or 2-3 smaller multipurpose fields Unsuitable for baseball/softball field Would need to pave over significant portion to provide adequate parking Unsuitable topography in most of the property 		<ul style="list-style-type: none"> Would need to be rezoned Would need to increase parking Difficult traffic pattern
Notes:							
<p>Definition of zoning codes: AAA = 2 Acre zone AA = 1 Acre zone A = 1/2 Acre zone B = 6,000 square feet DSORD1 = Dedicated open space and recreation district DSORD2 = Dedicated open space and recreation district DSORD3 = Dedicated open space and recreation district GBD = General Business District</p> <p>Acreage = maintained/managed by P&R</p>				<p>Seasons: Fall: August 15 - Thanksgiving Spring: March 30 - June 15 (March 1-30 synthetic turf fields available) Summer: June 15 - August 15</p> <p>*Usage times and hours are general and not exact ** P&R assigns time slots to user groups - groups manage their specific allotments ***P&R may run more or less programs at any given time and/or season</p>			



Burr Farms Athletic Complex

Westport, CT

1 inch = 50 Feet

0 50 100 150



www.cai-tech.com



WESTPORT
PARKS & RECREATION

Westport Athletic Fields

**Burr Farms Athletic Complex
Field Layouts & User groups 2023**

Athletic Program Spaces

Field	Sport/layout	User groups	Season
Baseball East	BB 46/60	WBSA - U10-U13, U8-U9, Travel U10/11, U12/13	Spring/Fall
Baseball West	BB/SB 46/60, 40/60	WBSA - U10-U13, U8-U9, Travel U10/11, U12/13	Spring/Fall
Natural Turf	7v7 Soccer	WSA - 8/9 year olds	Spring/Fall
	9v9 Soccer	WSA - 10/11 year olds	Spring/Fall
	G LAX	G LAX	Spring
	Open field (no lines)	WBSA - Tots	Fall



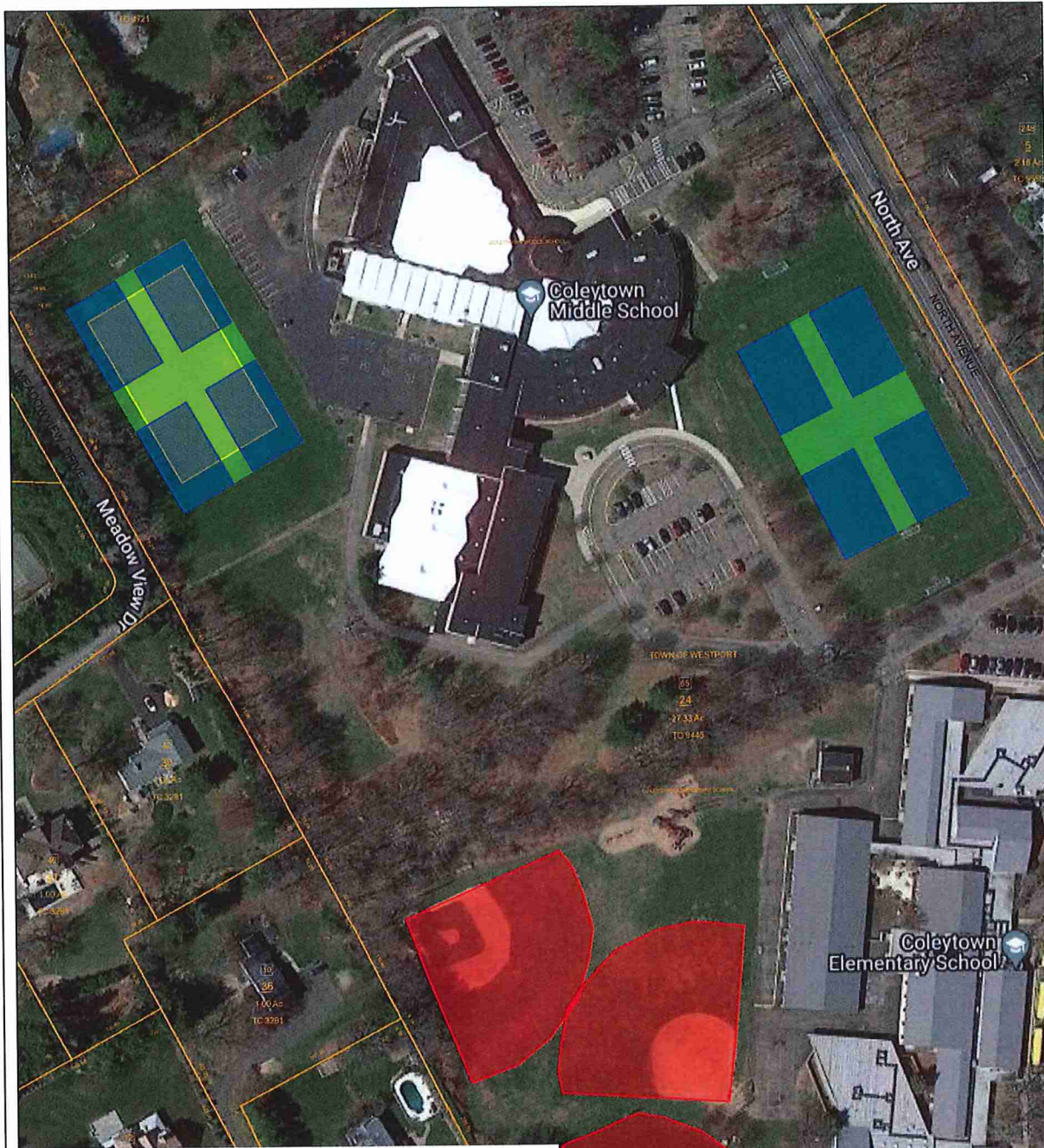
Coleytown MS & ES

Westport, CT

1 inch = 105 Feet



www.cai-tech.com



Westport Athletic Fields

Coleytown MS & ES
Field Layouts & User groups 2023

Athletic Program Spaces			
Field	Sport/layout	User groups	Season
Baseball North	BB 46/60	WBSA - Travel U8 - U13	Spring/Fall
Baseball South	BB 46/60	WBSA - Grade K, LL U8-U13	Spring/Fall
		Rec - IST	Spring/Fall
Softball	SB 40/60	WBSA - U12 and under	Spring/Fall
Rear Field	7v7 Soccer	WSA - 8/9 year olds	Spring/Fall
	9v9 Soccer	WSA - 10/11 year olds	Spring/Fall
	Mini-Fields	WSA - Rec K-2nd grade	Spring/Fall
Front Field	9v9 Soccer	WSA - 10/11 year olds	Spring/Fall
	Mini-Fields	WSA - Rec K-2nd grade	Spring/Fall
All Fields	Recess	Coleytown MS & ES	Spring/Fall
	Gym	Coleytown MS & ES	Spring/Fall

Westport Fire Station 6



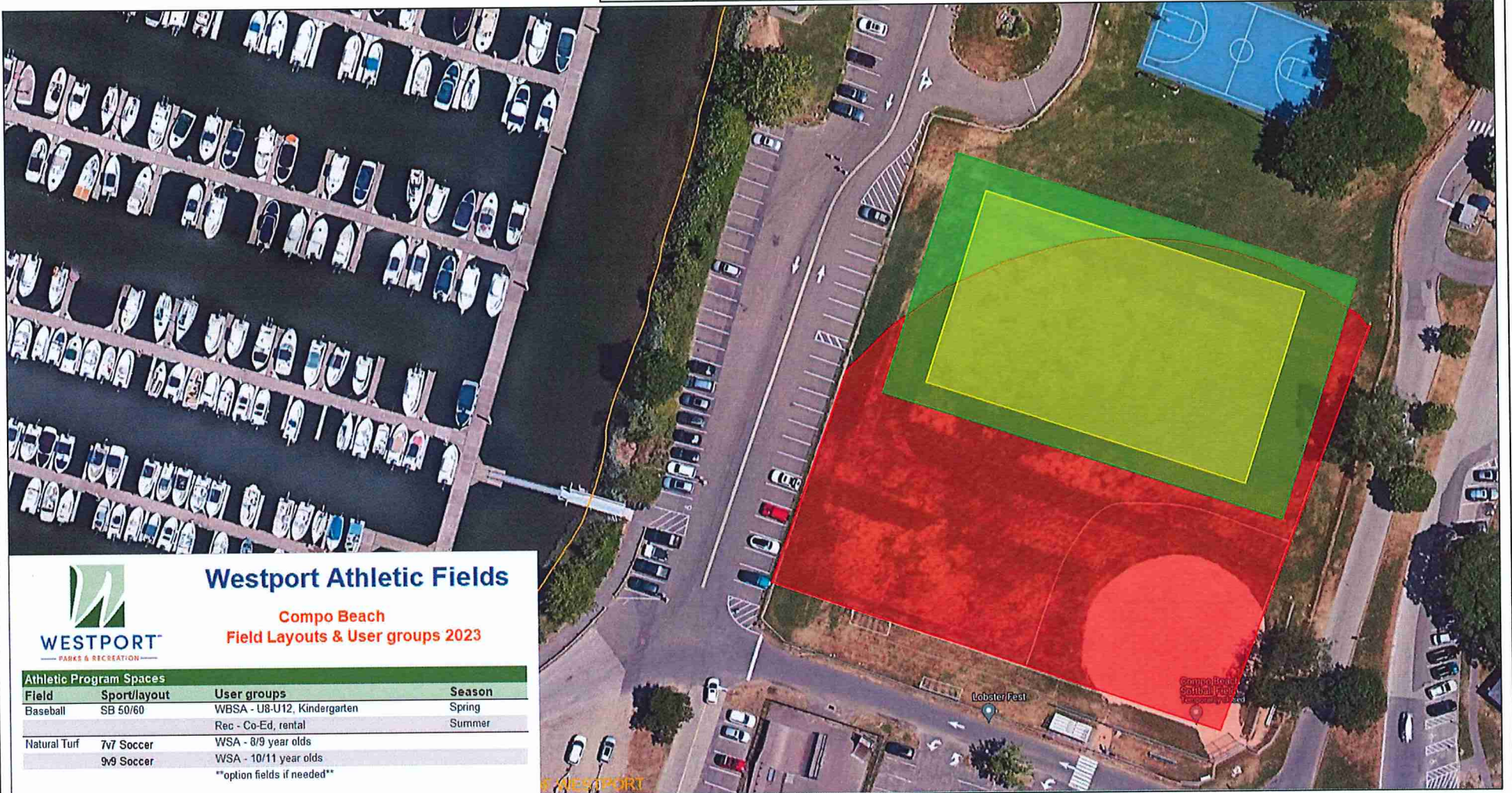
Compo Beach

Westport, CT

1 inch = 50 Feet



www.cai-tech.com



WESTPORT
PARKS & RECREATION

Westport Athletic Fields

Compo Beach
Field Layouts & User groups 2023

Athletic Program Spaces			
Field	Sport/layout	User groups	Season
Baseball	SB 50/60	WBSA - U8-U12, Kindergarten	Spring
		Rec - Co-Ed, rental	Summer
Natural Turf	7v7 Soccer	WSA - 8/9 year olds	
	9v9 Soccer	WSA - 10/11 year olds	

****option fields if needed****



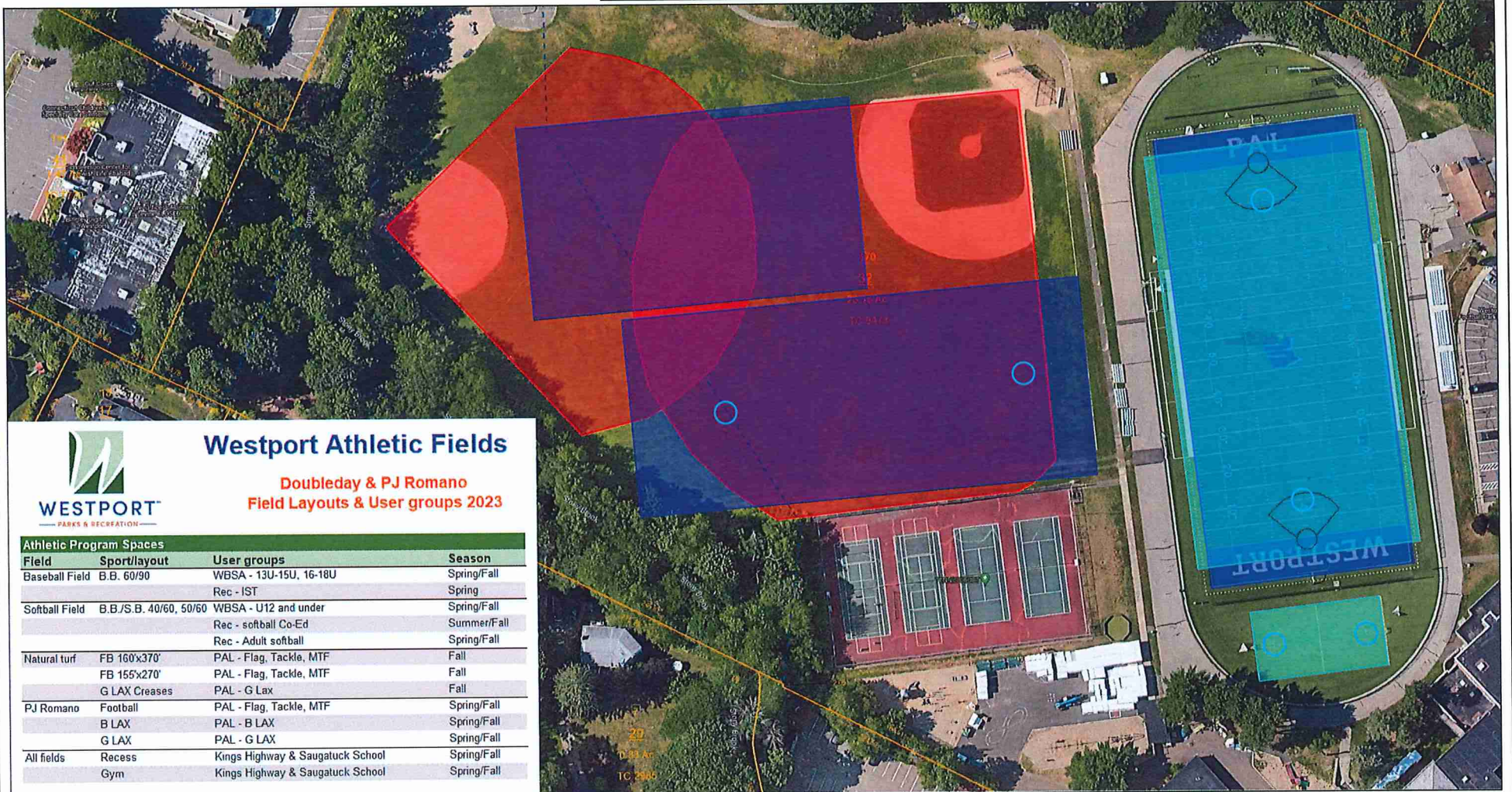
Doubleday & PJ Romano

Westport, CT

1 inch = 75 Feet



www.cai-tech.com



Westport Athletic Fields

Doubleday & PJ Romano Field Layouts & User groups 2023

Athletic Program Spaces			
Field	Sport/layout	User groups	Season
Baseball Field	B.B. 60/90	WBSA - 13U-15U, 16-18U Rec - IST	Spring/Fall Spring
Softball Field	B.B./S.B. 40/60, 50/60	WBSA - U12 and under Rec - softball Co-Ed Rec - Adult softball	Spring/Fall Summer/Fall Spring/Fall
Natural turf	FB 160'x370' FB 155'x270' G LAX Creases	PAL - Flag, Tackle, MTF PAL - Flag, Tackle, MTF PAL - G Lax	Fall Fall Fall
PJ Romano	Football B LAX G LAX	PAL - Flag, Tackle, MTF PAL - B LAX PAL - G LAX	Spring/Fall Spring/Fall Spring/Fall
All fields	Recess Gym	Kings Highway & Saugatuck School Kings Highway & Saugatuck School	Spring/Fall Spring/Fall



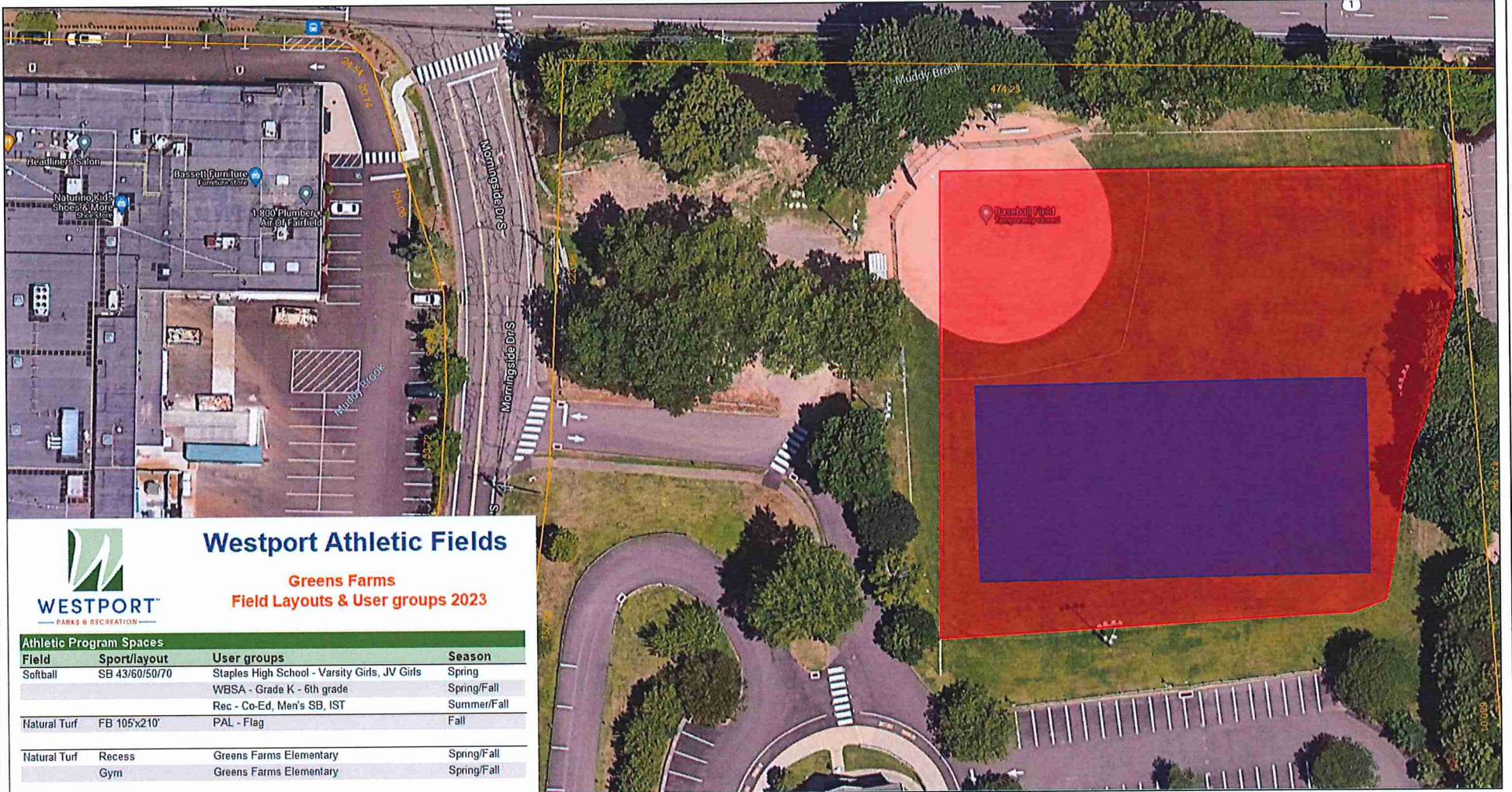
Greens Farms

Westport, CT

1 inch = 50 Feet



www.cai-tech.com



WESTPORT
PARKS & RECREATION

Westport Athletic Fields

Greens Farms
Field Layouts & User groups 2023

Athletic Program Spaces			
Field	Sport/layout	User groups	Season
Softball	SB 43/60/50/70	Staples High School - Varsity Girls, JV Girls	Spring
		WBSA - Grade K - 6th grade	Spring/Fall
		Rec - Co-Ed, Men's SB, IST	Summer/Fall
Natural Turf	FB 105x210'	PAL - Flag	Fall
Natural Turf	Recess	Greens Farms Elementary	Spring/Fall
	Gym	Greens Farms Elementary	Spring/Fall



Hillspoint Athletic Fields

Westport, CT

1 inch = 50 Feet



www.cai-tech.com



Westport Athletic Fields

Hillspoint Athletic Fields Field Layouts & User groups 2023

Athletic Program Spaces

Field	Sport/layout	User groups	Season
North	BB 46/60	WBSA - Pre K - 2nd grade	Spring
South	SB 40/60	WBSA - K - 2nd grade	Spring



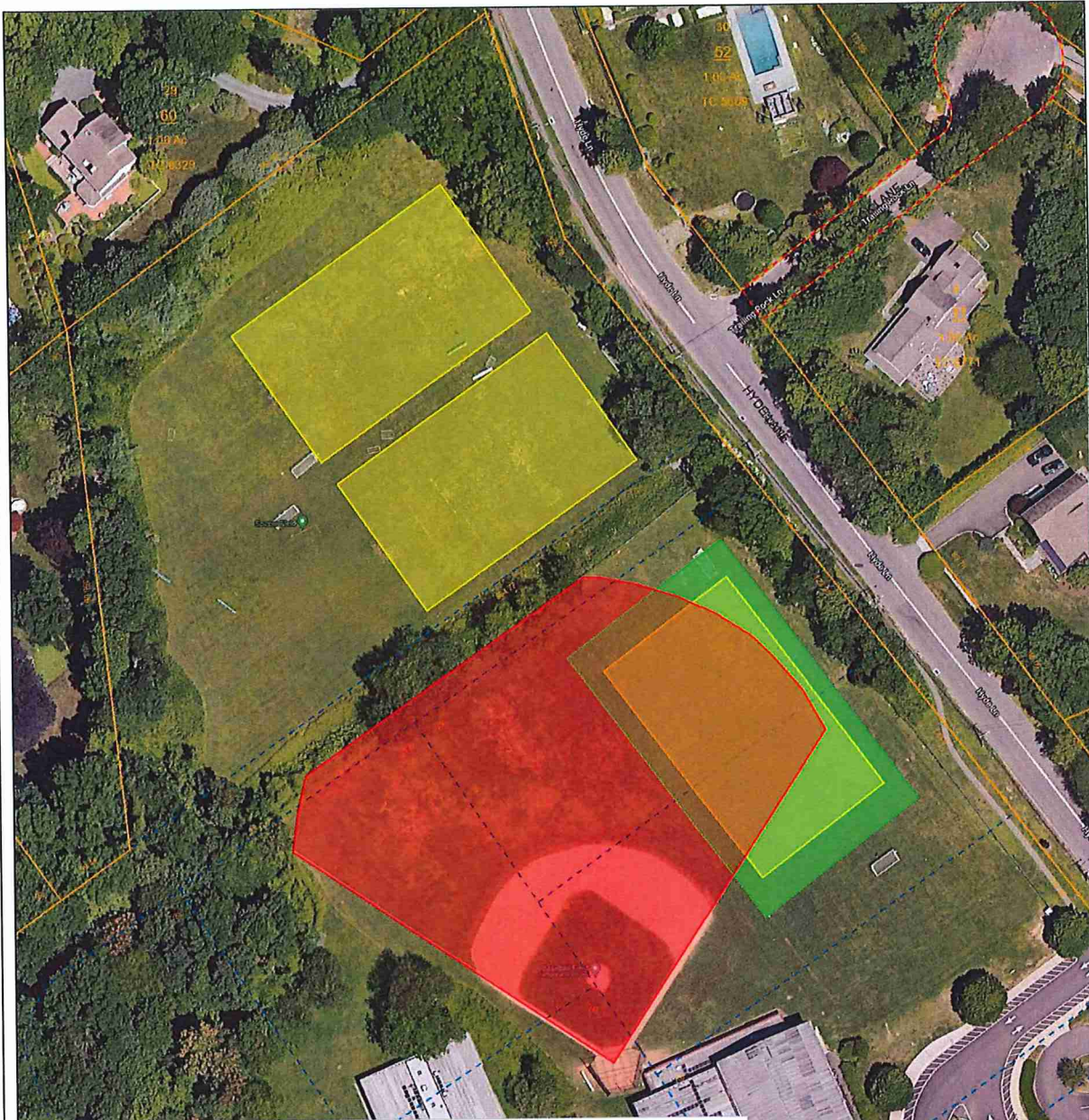
Long Lots

Westport, CT

1 inch = 75 Feet



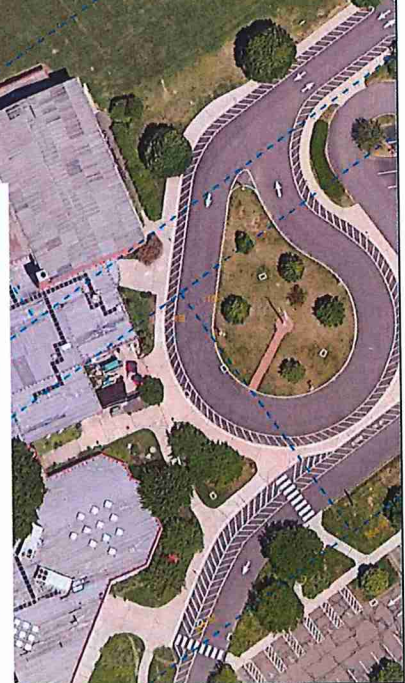
www.cai-tech.com



Westport Athletic Fields

Long Lots School Field Layouts & User groups 2023

Athletic Program Spaces			
Field	Sport/layout	User groups	Season
Baseball	BB 60/90	Staples High School - Freshman Baseball	Spring
		WBSA - U13-U15	Spring/Fall
		Rec - IST	Spring
Upper Field	7v7 Soccer	WSA - 8/9 year olds	Spring/Fall
		WSA - 10-11 year olds	Spring/Fall
Lower Field	7v7 Soccer #1	WSA - 8/9 year olds	Spring/Fall
		7v7 Soccer #2	WSA - 8/9 year olds
Natural Turf	Recess	Long Lots Elementary	Spring/Fall
	Gym	Long Lots Elementary	Spring/Fall





Luciano Park

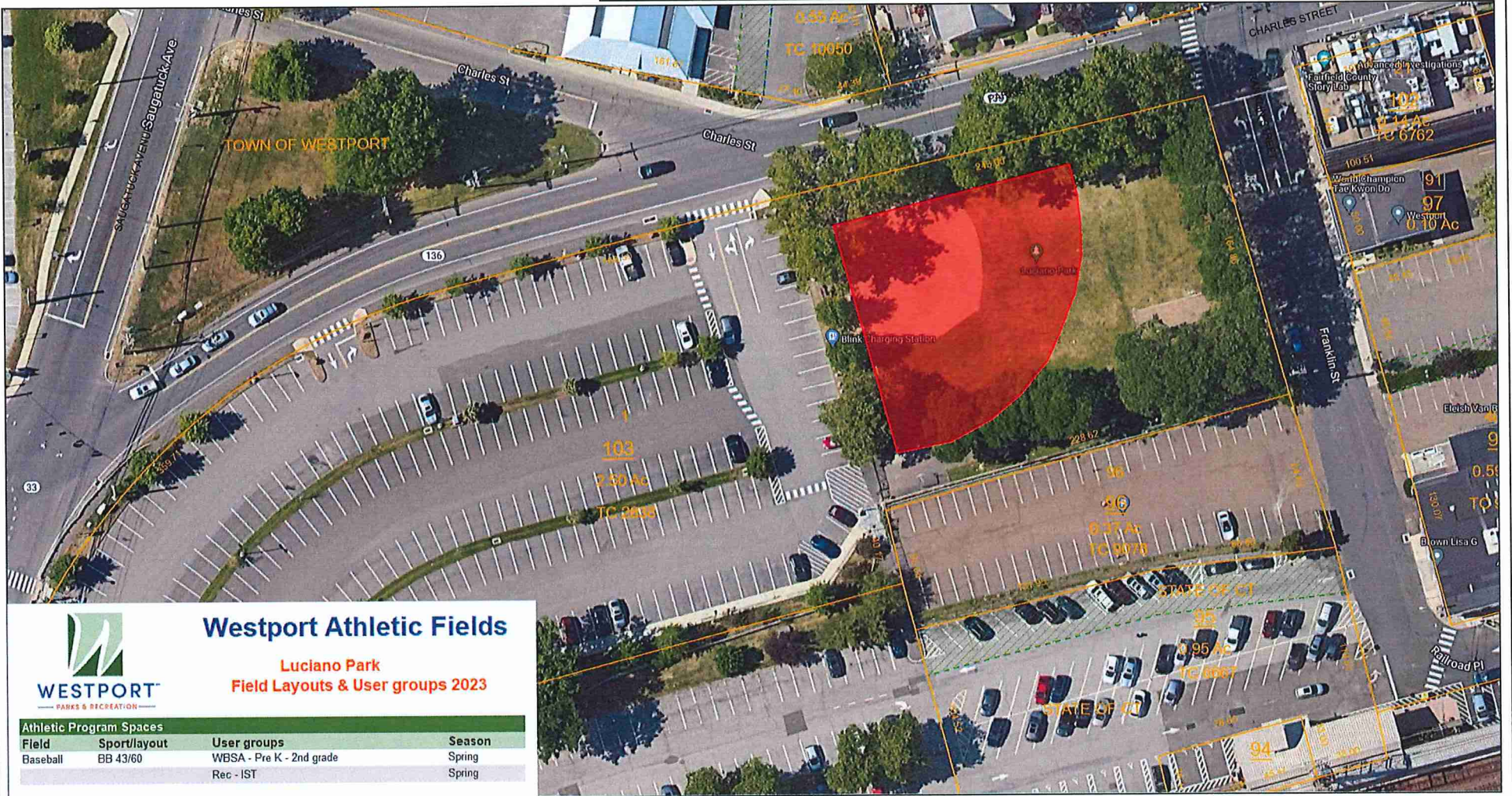
Westport, CT

1 inch = 50 Feet

0 50 100 150



www.cai-tech.com



Westport Athletic Fields

Luciano Park
Field Layouts & User groups 2023

Athletic Program Spaces			
Field	Sport/layout	User groups	Season
Baseball	BB 43/60	WBSA - Pre K - 2nd grade Rec - IST	Spring Spring



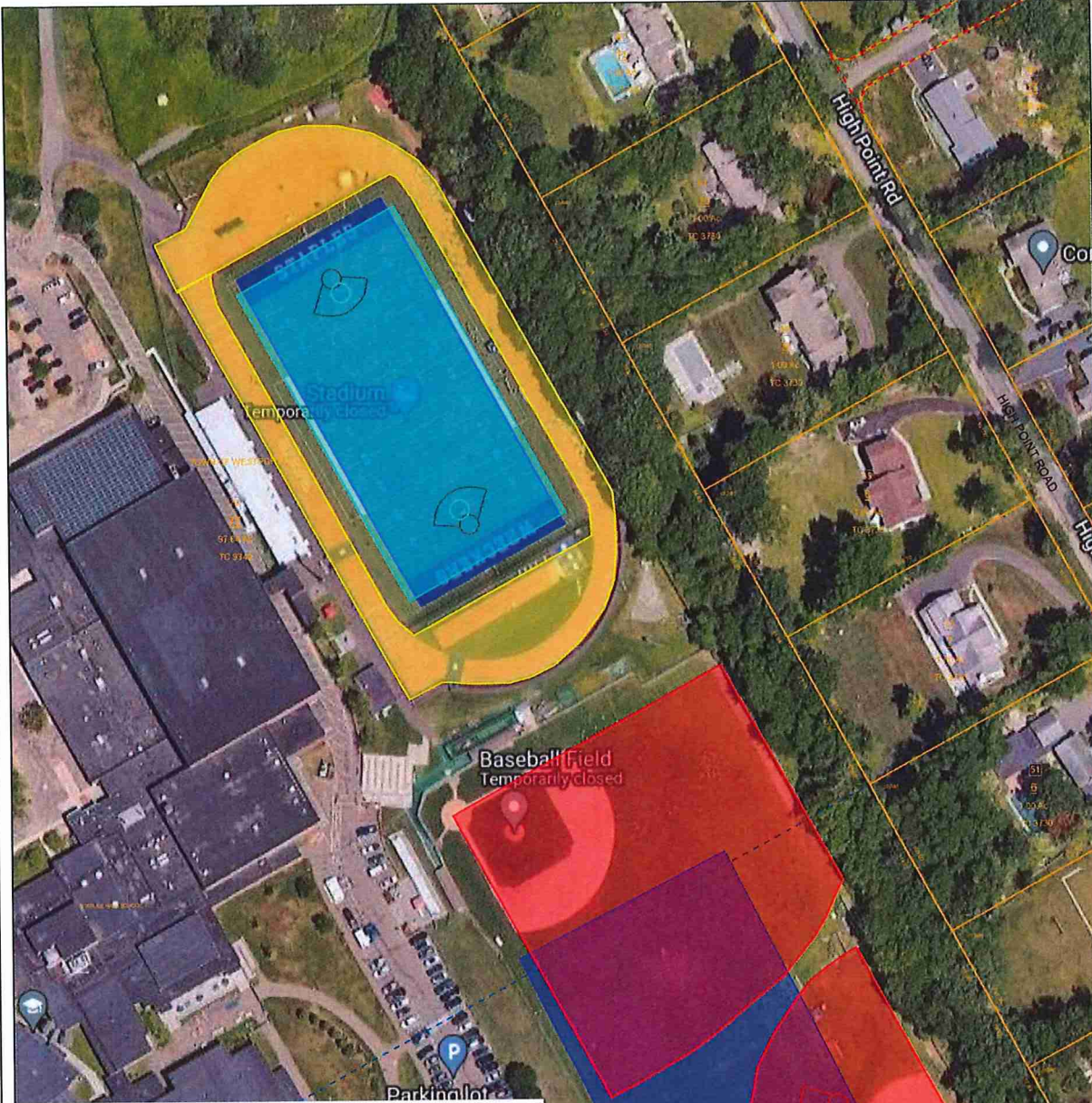
Staples High School

Westport, CT

1 inch = 105 Feet



www.cai-tech.com



Westport Athletic Fields

Staples High School Field Layouts & User groups 2023

Athletic Program Spaces			
Field	Sport/Layout	User groups	Season
Stadium Field	Football	Staples High School - Varsity Boys, JV Boys	Fall
		PAL - FB	Fall
	Boys LAX	Staples High School - Varsity Boys, JV Boys	Spring
		PAL - Boys LAX	Spring/Fall
	Girls LAX	Staples High School - Varsity Girls, JV Girls	Spring
		PAL - Girls LAX	Spring/Fall
Rugby		Staples High School - Varsity Boys	Spring
		PAL - Rugby	Spring
	Track & Field	Staples High School - Varsity Boys, JV Boys	Spring/Fall
Baseball Field		Staples High School - Varsity Girls, JV Girls	Spring/Fall
	BB 60/90	Staples High School - Varsity Boys, JV Boys	Spring
Softball Field	SB 43/60	WBSA - Legion	Spring/Fall
Loftier Field	11v11 Soccer	Staples High School - JV Girls	Spring
Loftier Field		Staples High School - Varsity Boys, JV Boys	Fall
		Staples High School - Varsity Girls, JV Girls	Fall
Loftier Field	G LAX Creases	PAL - Girls LAX	Spring
Ginny Parker	Field Hockey	Staples High School - Varsity Girls, JV Girls	Spring
	G LAX	Staples High School - Varsity Girls, JV Girls	Fall
		PAL - Girls LAX	Fall





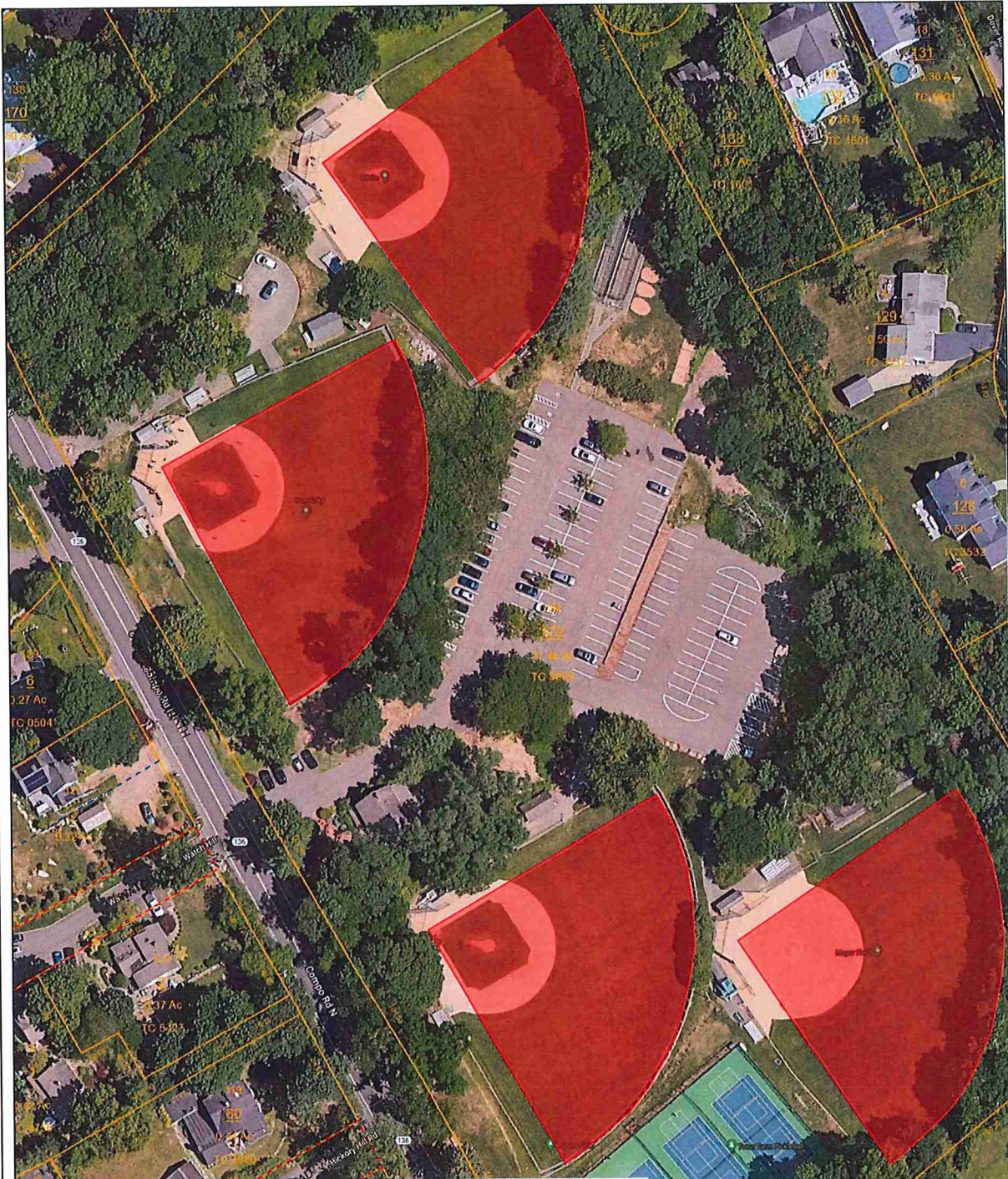
Town Farm

Westport, CT

1 inch = 75 Feet



www.cai-tech.com



Westport Athletic Fields

Town Farm
Field Layouts & User groups 2023

Athletic Program Spaces			
Field	Sport/layout	User groups	Season
White	BB 46/60	WBSA - LL U8-U12	Spring/Fall
Kowalsky	BB 46/60	WBSA - LL U8-U12	Spring/Fall
Rogers	BB 46/60	WBSA - LL U8-U12	Spring/Fall
Meyer	SB 43/60	WBSA - LL U8-U12	Spring/Fall





Town Hall Athletic Fields

Westport, CT

1 inch = 50 Feet



www.cai-tech.com



WESTPORT
PARKS & RECREATION

Westport Athletic Fields

Town Hall Athletic Fields
Field Layouts & User groups 2023

Athletic Program Spaces			
Field	Sport/layout	User groups	Season
North	SB 35/60, 40/60	WBSA - LL U8-U12	Spring
		Boys of Summer	Year round
North	SB 35/60, 40/60	WBSA - LL U8-U12	Spring
Natural Turf		Rec - Sports Camp	Summer





Wakeman Park

Westport, CT

1 inch = 105 Feet



www.cai-tech.com



Westport Athletic Fields

Wakeman Park
Field Layouts & User groups 2023

Athletic Program Spaces			
Field	Sport/layout	User groups	Season
A Natural turf	7v7 Soccer	WSA - 8/9 year olds	Spring/Fall
	9/9 Soccer	WSA - 10/11 year old	Spring/Fall
	Girls LAX	PAL - Girls LAX	Spring/Fall
B Synthetic	11v11 Soccer	Staples High School - Varsity Boys, JV Boys	Fall
		Staples High School - Varsity Girls, JV Girls	Fall
		WSA - 12 & up	Fall
		WSA - Adult rec	Fall
	Boys LAX	Staples High School - Varsity Boys, JV Boys	Spring
	Girls LAX	PAL - Boys LAX	Spring/Fall
C Natural turf	HS Football - practice	Staples High School - Varsity Boys, JV Boys	Fall
		Staples High School - Varsity Boys, JV Boys	Fall
	PAL Flag	PAL - Flag football	Fall
	LAX practice	Staples High School - Varsity Boys, JV Boys	Spring
	C Softball	Softball	Staples High School - Varsity Girls, JV Girls
D Baseball	Baseball	WSA - HS fall ball AAU	Fall
		Staples High School - JV Boys	Spring
		WSA - Travel, Legion, Adv BB 13-15	Spring/Fall
		WSA - Mens League	Spring/Fall
E Natural turf	HS 11v11	Staples High School - Varsity Boys, JV Boys	Fall
		Staples High School - Varsity Girls, JV Girls	Fall
		WSA - 12 & up	Spring/Fall
	Mini fields x6	WSA - Rec K2nd grade	Spring/Fall
	Boys LAX	Staples High School - Varsity Boys, JV Boys	Spring
		PAL - Boys LAX	Spring



LWA Concept Illustrations



1 inch = 100 Feet



www.cai-tech.com

11v11 field - **BLUE**
 Baseball 60' mound 90' bases - **RED**
 Foul lines 325'
 Center field - 400'
 Parking 68 spaces - **PINK** - 130' x 210' same dimensions as Town Farm lot
 Wet lands - **Yellow** - approximate location per DEEP State Forester report



Data shown on this map is provided for planning and informational purposes only. The municipality and CAI Technologies are not responsible for any use for other purposes or misuse or misrepresentation of this map.



Winslow Concept Illustrations

1 inch = 100 Feet



www.cai-tech.com

11v11 field - **BLUE**
 9v9 fields - **GREEN**
 Baseball 60' mound 90' bases **RED**
 Foul lines 325'
 Center field - 400'
 Parking 68 spaces - **PINK** - 130' x 210' same dimensions as Town Farm lot



Data shown on this map is provided for planning and informational purposes only. The municipality and CAI Technologies are not responsible for any use for other purposes or misuse or misrepresentation of this map.



Winslow North Concept Illustrations



September 21, 2023

1 inch = 100 Feet

www.cai-tech.com



Baseball 60' mound 90' bases **RED**
 Foul lines 325'
 Center field - 400'

Parking 68 spaces - **PINK** - 130' x 210' same dimensions as Town Farm lot

Data shown on this map is provided for planning and informational purposes only. The municipality and CAI Technologies are not responsible for any use for other purposes or misuse or misrepresentation of this map.



Barron's South Concept Illustrations

1 inch = 60 Feet



Approximate size of current Community Garden 50,100 square feet