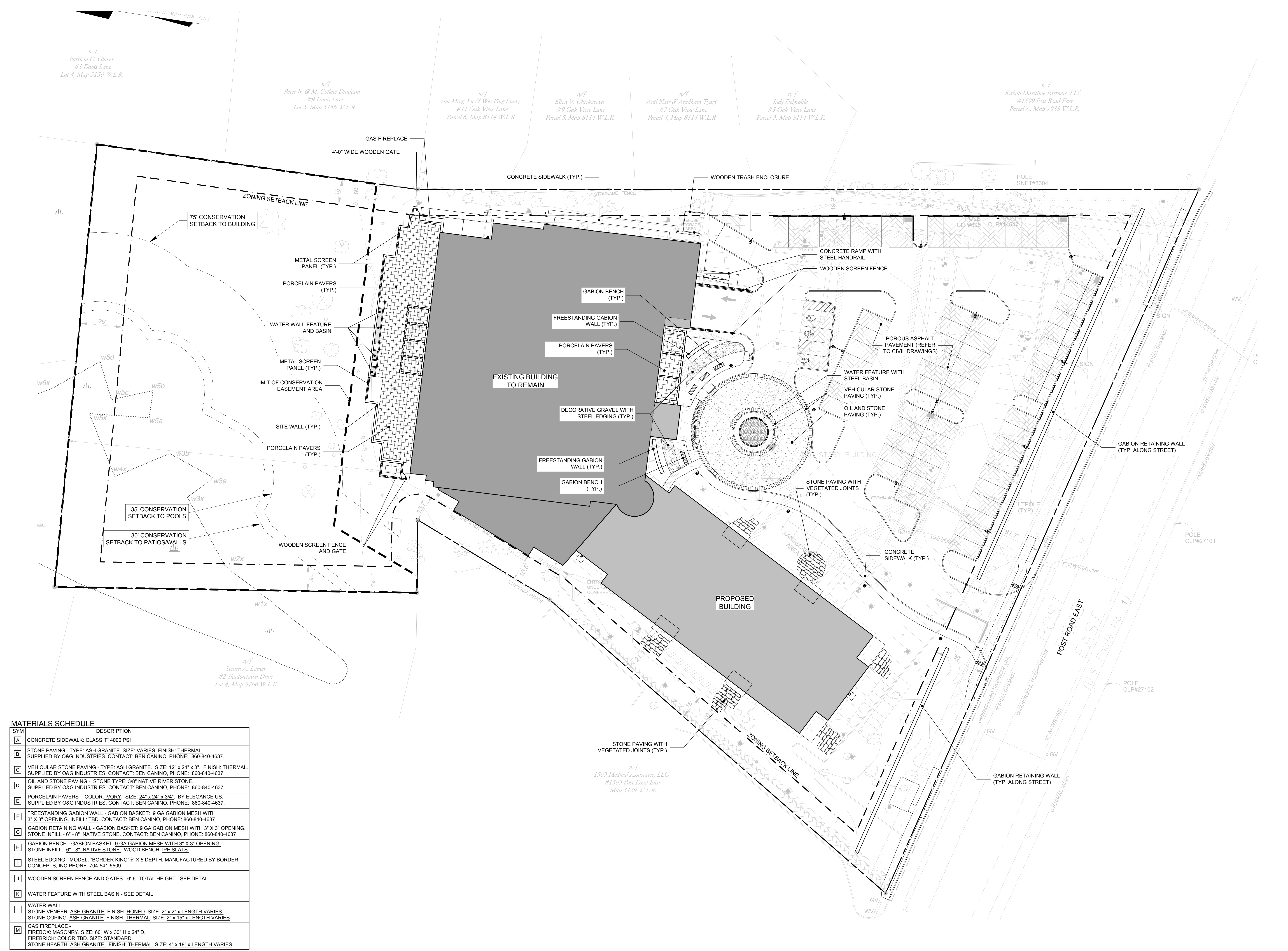




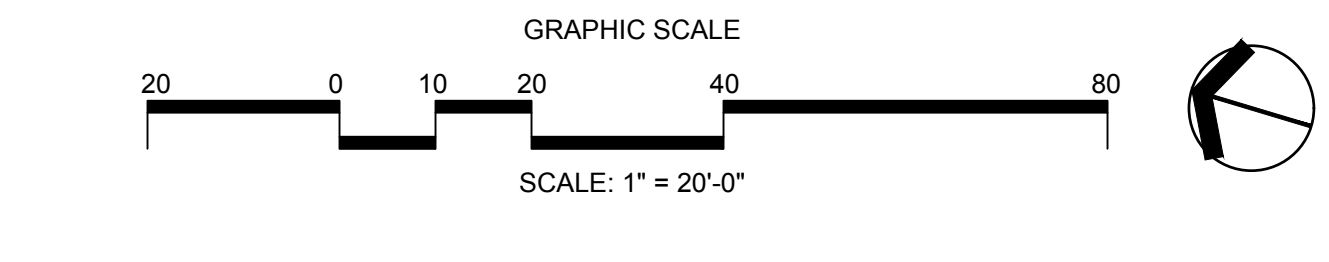
NO.	DATE	DESCRIPTION



MATERIALS SCHEDULE

SYM	DESCRIPTION
A	CONCRETE SIDEWALK: CLASS F' 4000 PSI
B	STONE PAVING - TYPE: ASH GRANITE, SIZE: VARIES, FINISH: THERMAL, SUPPLIED BY O&G INDUSTRIES, CONTACT: BEN CANINO, PHONE: 860-840-4637.
C	VEHICULAR STONE PAVING - TYPE: ASH GRANITE, SIZE: 12" x 24" x 3", FINISH: THERMAL, SUPPLIED BY O&G INDUSTRIES, CONTACT: BEN CANINO, PHONE: 860-840-4637.
D	OIL AND STONE PAVING - STONE TYPE: 3/8" NATIVE RIVER STONE, SUPPLIED BY O&G INDUSTRIES, CONTACT: BEN CANINO, PHONE: 860-840-4637.
E	PORCELAIN PAVERS - COLOR: IVORY, SIZE: 24" x 24" x 3/4", BY ELEGANCE US, SUPPLIED BY O&G INDUSTRIES, CONTACT: BEN CANINO, PHONE: 860-840-4637.
F	FREESTANDING GABION WALL - GABION BASKET: 9 GA GABION MESH WITH 3" X 3" OPENING, INFILL: TBD, CONTACT: BEN CANINO, PHONE: 860-840-4637
G	GABION RETAINING WALL - GABION BASKET: 9 GA GABION MESH WITH 3" X 3" OPENING, STONE INFILL - 6" - 8" NATIVE STONE, CONTACT: BEN CANINO, PHONE: 860-840-4637
H	GABION BENCH - GABION BASKET: 9 GA GABION MESH WITH 3" X 3" OPENING, STONE INFILL - 6" - 8" NATIVE STONE, WOOD BENCH: IPE SLATS.
I	STEEL EDGING - MODEL: "BORDER KING" 1/2" X 5" DEPTH, MANUFACTURED BY BORDER CONCEPTS, INC PHONE: 704-541-5509
J	WOODEN SCREEN FENCE AND GATES - 6'-6" TOTAL HEIGHT - SEE DETAIL
K	WATER FEATURE WITH STEEL BASIN - SEE DETAIL
L	WATER WALL - STONE VENEER: ASH GRANITE, FINISH: HONED, SIZE: 2" x 2" x LENGTH VARIES, STONE COPING: ASH GRANITE, FINISH: THERMAL, SIZE: 2" x 15" x LENGTH VARIES.
M	GAS FIREPLACE - FIREBOX: MASONRY, SIZE: 60" W x 30" H x 24" D, FIREBRICK: COLOR TBD, SIZE: STANDARD, STONE HEARTH: ASH GRANITE, FINISH: THERMAL, SIZE: 4" x 18" x LENGTH VARIES

NOTES:
1. REFER TO DETAIL SHEETS FOR ADDITIONAL INFORMATION.
2. ALL STONE AND PAVING MATERIALS MUST BE SUBMITTED FOR REVIEW AND APPROVAL.





PROJECT

DELAMAR WESTPORT INN

1595 Post Rd E.
Westport, CT 06880

PERMIT SET

REVISION

PERMIT SET

NO.	DATE	DESCRIPTION

DRAWING TITLE

SITE PLANTING PLAN

L-2.00

PROJECT NO 55692
SCALE 1"=20'-0"
DATE ISSUED JUNE 7, 2023
AUTHOR -

This drawing, including designs and arrangements represented thereby, are and shall remain the property of the Architect. No part thereof shall be copied, disclosed to others or used in connection with any work or project other than the specific project for which it has been prepared or reviewed without the written consent of the Architect.

n/f
Patricia C. Glover
#8 Davis Lane
Lot 4, Map 5156 W.L.R.

n/f
Peter Jr. & M. Collette Dunham
#9 Davis Lane
Lot 5, Map 5156 W.L.R.

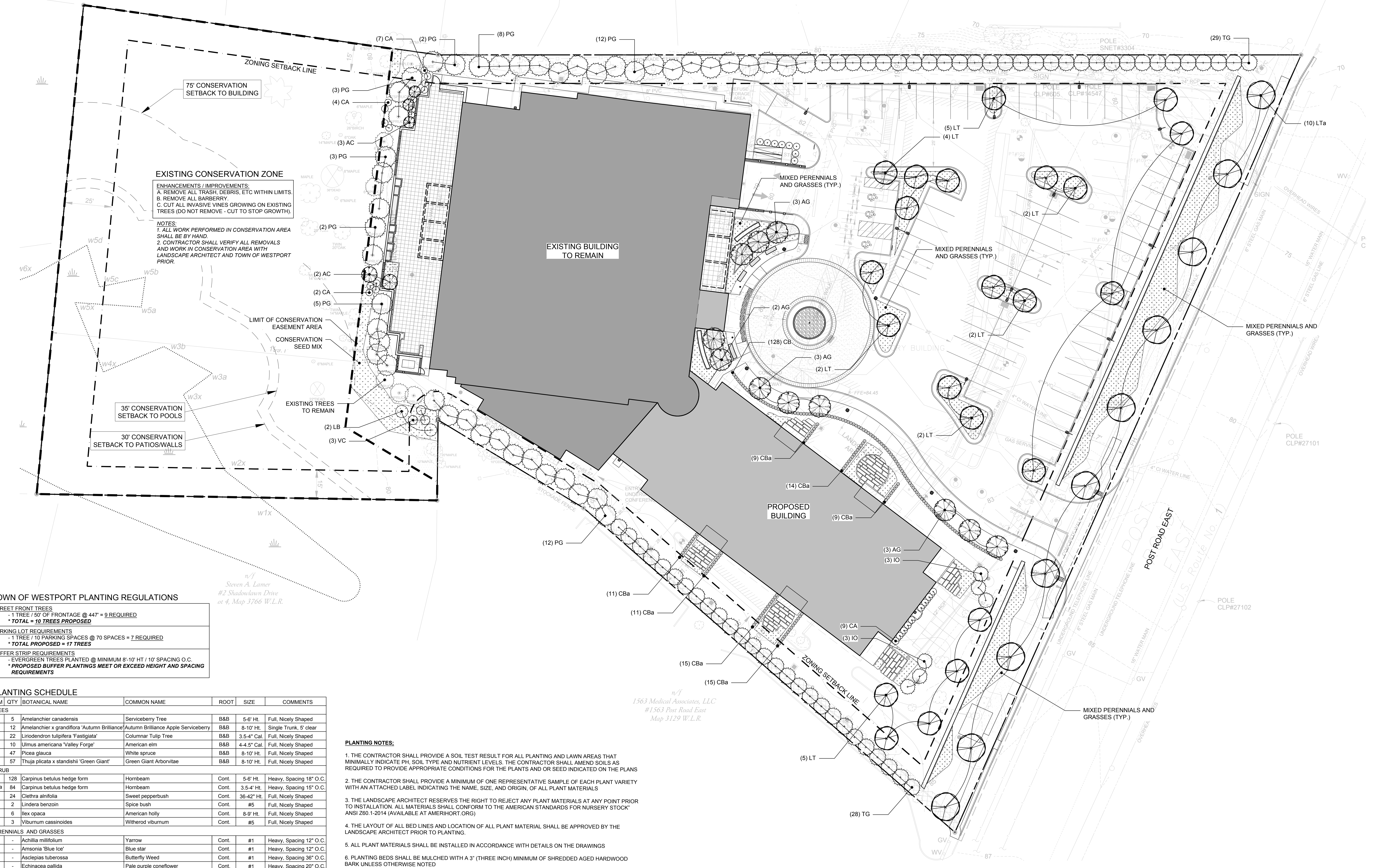
n/f
You Ming Xu & Wei Ping Liang
#11 Oak View Lane
Parcel 6, Map 8114 W.L.R.

n/f
Ellen V. Chickaross
#9 Oak View Lane
Parcel 5, Map 8114 W.L.R.

n/f
Anil Nair & Anandh Tyagi
#7 Oak View Lane
Parcel 4, Map 8114 W.L.R.

n/f
Judy Delgrotte
#5 Oak View Lane
Parcel 3, Map 8114 W.L.R.

n/f
Kabop Maritime Partners, LLC
#1599 Post Road East
Parcel A, Map 7988 W.L.R.



EXISTING CONSERVATION ZONE
ENHANCEMENTS / IMPROVEMENTS:
A. REMOVE ALL TRASH, DEBRIS, ETC WITHIN LIMITS.
B. REMOVE ALL BARBERRY.
C. CUT ALL INVASIVE VINES GROWING ON EXISTING TREES (DO NOT REMOVE - CUT TO STOP GROWTH).
NOTES:
1. ALL WORK PERFORMED IN CONSERVATION AREA SHALL BE BY HAND.
2. CONTRACTOR SHALL VERIFY ALL REMOVALS AND WORK IN CONSERVATION AREA WITH LANDSCAPE ARCHITECT AND TOWN OF WESTPORT PRIOR.

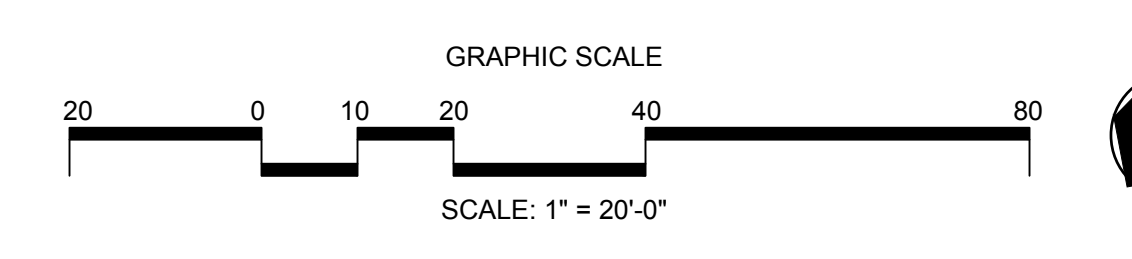
TOWN OF WESTPORT PLANTING REGULATIONS

STREET FRONT TREES
- 1 TREE / 50' OF FRONTAGE @ 44" = 9 REQUIRED
- TOTAL = 10 TREES PROPOSED
PARKING LOT REQUIREMENTS
- 1 TREE / 10 PARKING SPACES @ 70 SPACES = 7 REQUIRED
- TOTAL PROPOSED = 17 TREES
BUFFER STRIP REQUIREMENTS
- EVERGREEN TREES PLANTED @ MINIMUM 8'-10" HT / 10' SPACING O.C.
- PROPOSED BUFFER PLANTINGS MEET OR EXCEED HEIGHT AND SPACING REQUIREMENTS

SYM	QTY	BOTANICAL NAME	COMMON NAME	ROOT	SIZE	COMMENTS
TREES						
AC	5	Amelanchier canadensis	Serviceberry Tree	B&B	5'-6" Ht.	Full, Nicely Shaped
AG	12	Amelanchier x grandiflora 'Autumn Brilliance'	Autumn Brilliance Apple Serviceberry	B&B	8'-10" Ht.	Single Trunk, 5' clear
LT	22	Liriodendron tulipifera 'Fastigiata'	Columnar Tulip Tree	B&B	3.5-4" Cal.	Full, Nicely Shaped
UA	10	Ulmus americana 'Valley Forge'	American elm	B&B	4.4-5" Cal.	Full, Nicely Shaped
PG	47	Picea glauca	White spruce	B&B	8'-10" Ht.	Full, Nicely Shaped
TG	57	Thuja plicata x standishii 'Green Giant'	Green Giant Arborvitae	B&B	8'-10" Ht.	Full, Nicely Shaped
SHRUBS						
CB	128	Carpinus betulus hedge form	Hombbeam	Cont.	5'-6" Ht.	Heavy, Spacing 18" O.C.
CBa	84	Carpinus betulus hedge form	Hombbeam	Cont.	3.5-4" Ht.	Heavy, Spacing 15" O.C.
CA	24	Clethra alnifolia	Sweet pepperbush	Cont.	36-42" Ht.	Full, Nicely Shaped
LB	2	Lindera benzoin	Spice bush	Cont.	#5	Full, Nicely Shaped
IO	6	Ilex opaca	American holly	Cont.	8-9" Ht.	Full, Nicely Shaped
VC	3	Viburnum cassinoides	Withered viburnum	Cont.	#5	Full, Nicely Shaped
PERENNIALS AND GRASSES						
AM	-	Achillea millefolium	Yarrow	Cont.	#1	Heavy, Spacing 12" O.C.
AB	-	Amsonia 'Blue Ice'	Blue star	Cont.	#1	Heavy, Spacing 12" O.C.
AT	-	Asclepias tuberosa	Butterfly Weed	Cont.	#1	Heavy, Spacing 36" O.C.
EP	-	Echinacea pallida	Pale purple coneflower	Cont.	#1	Heavy, Spacing 20" O.C.
ES	-	Echinacea 'Sundown'	Coneflower	Cont.	#1	Heavy, Spacing 24" O.C.
PD	-	Penstemon digitalis	Beardtongue	Cont.	#1	Heavy, Spacing 24" O.C.
SS	-	Schizachyrium scoparium	Little bluestem	Cont.	#1	Heavy, Spacing 24" O.C.
SH	-	Sporobolus heterolepis	Prairie dropseed	Cont.	#1	Heavy, Spacing 24" O.C.
SL	-	Stokesia laevis 'Peachie's Pick'	Stoke's aster	Cont.	#1	Heavy, Spacing 24" O.C.
CONSERVATION SEED MIX						
-	TBD	PARTIALLY SHADED NATIVE MIX (ERNST SEED COMPANY)	-	-	-	20lb / ACRE Min.

PLANTING NOTES:

- THE CONTRACTOR SHALL PROVIDE A SOIL TEST RESULT FOR ALL PLANTING AND LAWN AREAS THAT MINIMALLY INDICATE PH, SOIL TYPE AND NUTRIENT LEVELS. THE CONTRACTOR SHALL AMEND SOILS AS REQUIRED TO PROVIDE APPROPRIATE CONDITIONS FOR THE PLANTS AND OR SEED INDICATED ON THE PLANS
- THE CONTRACTOR SHALL PROVIDE A MINIMUM OF ONE REPRESENTATIVE SAMPLE OF EACH PLANT VARIETY WITH AN ATTACHED LABEL INDICATING THE NAME, SIZE, AND ORIGIN, OF ALL PLANT MATERIALS
- THE LANDSCAPE ARCHITECT RESERVES THE RIGHT TO REJECT ANY PLANT MATERIALS AT ANY POINT PRIOR TO INSTALLATION. ALL MATERIALS SHALL CONFORM TO THE AMERICAN STANDARDS FOR NURSERY STOCK" ANSI Z60.1-2014 (AVAILABLE AT AMERIHORT.ORG)
- THE LAYOUT OF ALL BED LINES AND LOCATION OF ALL PLANT MATERIAL SHALL BE APPROVED BY THE LANDSCAPE ARCHITECT PRIOR TO PLANTING.
- ALL PLANT MATERIALS SHALL BE INSTALLED IN ACCORDANCE WITH DETAILS ON THE DRAWINGS
- PLANTING BEDS SHALL BE MULCHED WITH A 3" (THREE INCH) MINIMUM OF SHREDDED AGED HARDWOOD BARK UNLESS OTHERWISE NOTED
- ALL VEGETATION SHOWN ON THE DRAWINGS SHALL BE MAINTAINED IN A HEALTHY CONDITION THROUGHOUT THE DURATION OF THE PROJECT OR PROJECT PHASE
- ALL PLANT MATERIAL SHALL BE COVERED BY A ONE-YEAR FULL REPLACEMENT WARRANTY THAT SHALL INCLUDE ALL MATERIALS AND LABOR. THE CONTRACTOR SHALL REPLACE PLANTS AS SOON AS WEATHER AND SEASONAL CONDITIONS PERMIT
- IF THERE IS A DIFFERENCE IN COUNT OR SIZE OF PLANT MATERIALS BETWEEN THE PLAN AND THE LIST THE HIGHER NUMBER AND OR SIZE SHALL PREVAIL





PROJECT

DELAMAR WESTPORT INN

1595 Post Rd E.
Westport, CT 06880

PERMIT SET

REVISION

PERMIT SET

NO.	DATE	DESCRIPTION

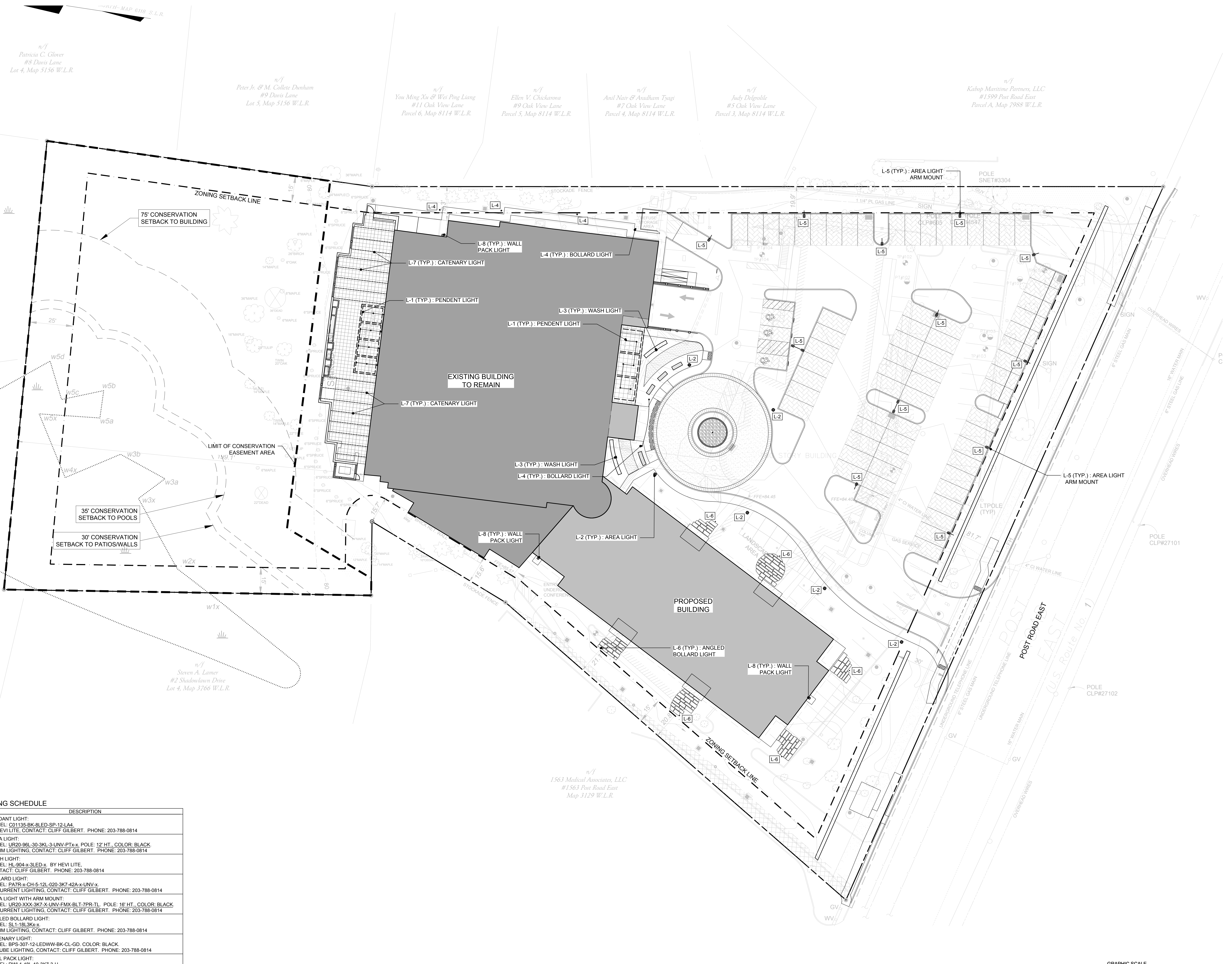
DRAWING TITLE

SITE LIGHTING PLAN

L-3.00

PROJECT NO 55692
SCALE 1"=20'-0"
DATE ISSUED JUNE 7, 2023
AUTHOR --

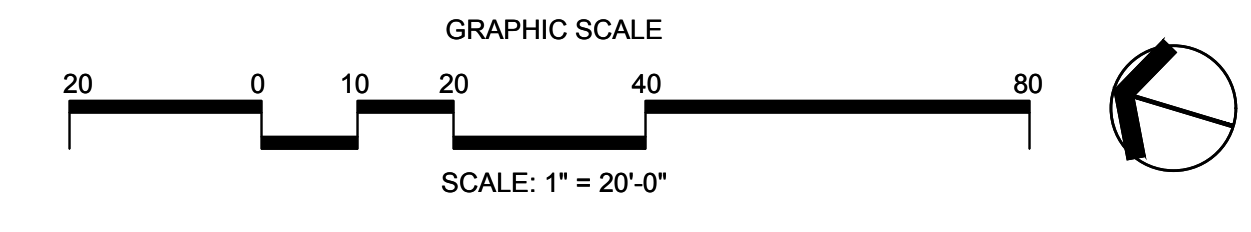
This drawing, including designs and arrangements represented thereby, are and shall remain in the property of the Architect. NO part thereof shall be copied, disclosed to others or used in connection with any work or project other than the specific project for which it has been prepared or reviewed without the written consent of the Architect.



SITE LIGHTING SCHEDULE

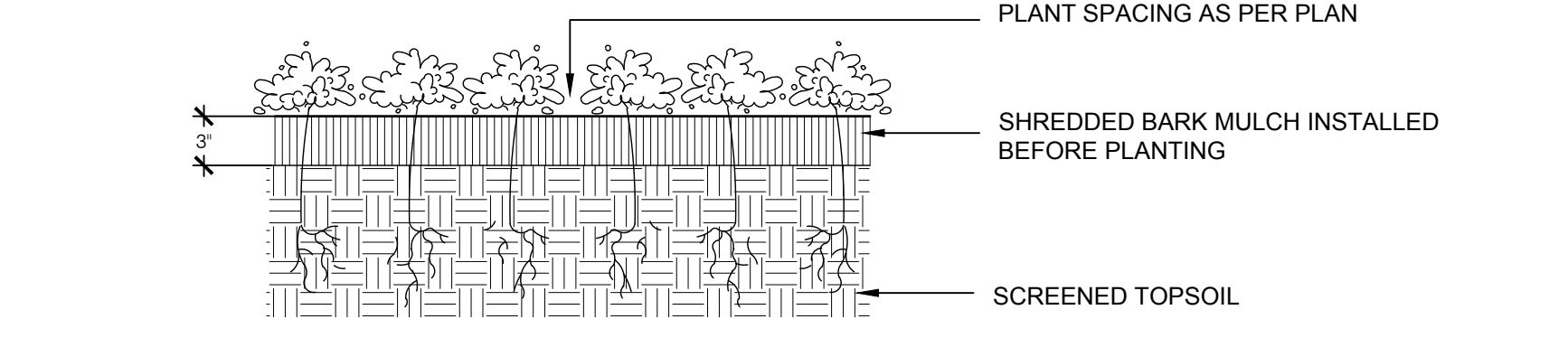
SYM	QTY	DESCRIPTION
L1	18	PENDANT LIGHT: MODEL: C01135-BK-BLED-SP-12-LA4 BY HEVI LITE, CONTACT: CLIFF GILBERT, PHONE: 203-788-0814
L2	6	AREA LIGHT: MODEL: UR20-96L-30-3KL-3-UNV-PTX-X, POLE: 12' HT., COLOR: BLACK BY KIM LIGHTING, CONTACT: CLIFF GILBERT, PHONE: 203-788-0814
L3	2	WASH LIGHT: MODEL: HL-304-X-3LED-X, BY HEVI LITE, CONTACT: CLIFF GILBERT, PHONE: 203-788-0814
L4	6	BOLLARD LIGHT: MODEL: PA7R-X-CH-5-12L-020-3K7-42A-X-UNV-X BY CURRENT LIGHTING, CONTACT: CLIFF GILBERT, PHONE: 203-788-0814
L5	14	AREA LIGHT WITH ARM MOUNT: MODEL: UR20-333X-3K7-X-UNV-FMK-BLT-ZPR-TL, POLE: 16' HT., COLOR: BLACK, BY CURRENT LIGHTING, CONTACT: CLIFF GILBERT, PHONE: 203-788-0814
L6	6	ANGLED BOLLARD LIGHT: MODEL: SL1-18L3KX-X, BY KIM LIGHTING, CONTACT: CLIFF GILBERT, PHONE: 203-788-0814
L7	-	CATENARY LIGHT: MODEL: BPS-307-12LEDWW-BK-CL-GD, COLOR: BLACK, BY TUBE LIGHTING, CONTACT: CLIFF GILBERT, PHONE: 203-788-0814
L8	3	WALL PACK LIGHT: MODEL: RWL1-48L-10-3K7-3-U, BY BEACON, CONTACT: CLIFF GILBERT, PHONE: 203-788-0814

NOTES:
1. REFER TO DETAIL SHEETS FOR ADDITIONAL INFORMATION.

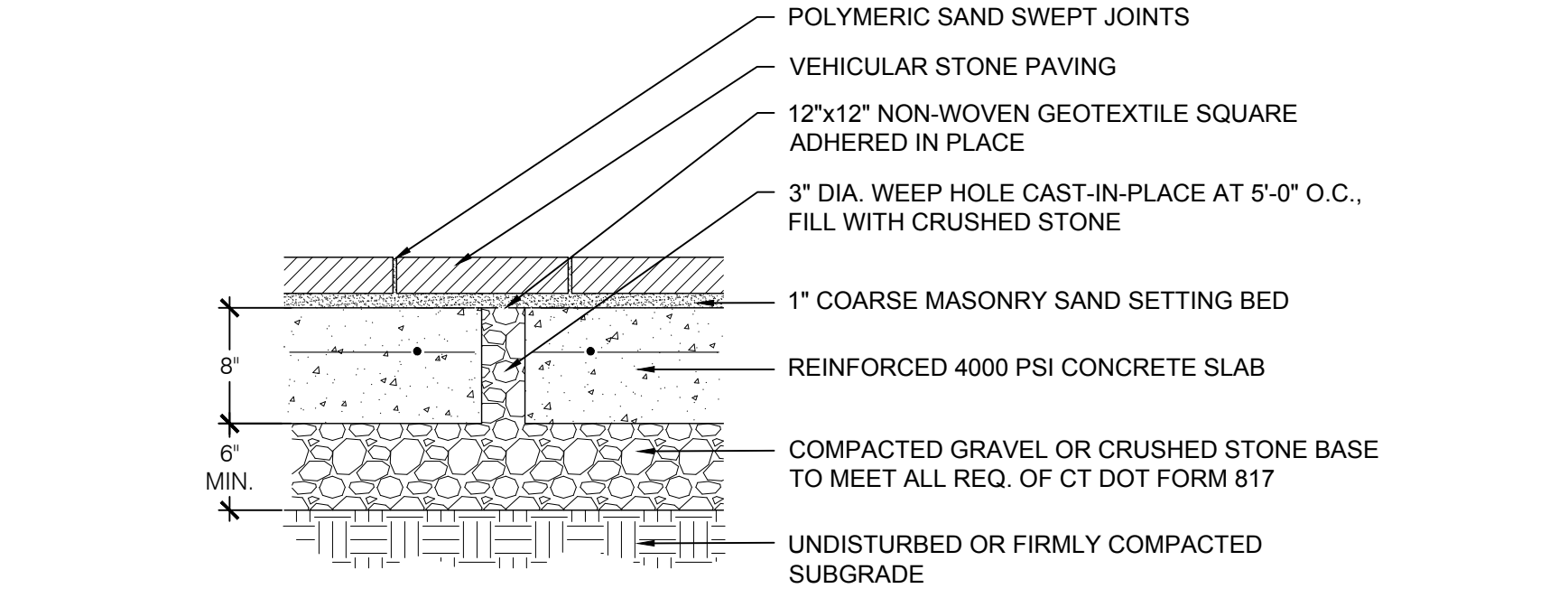




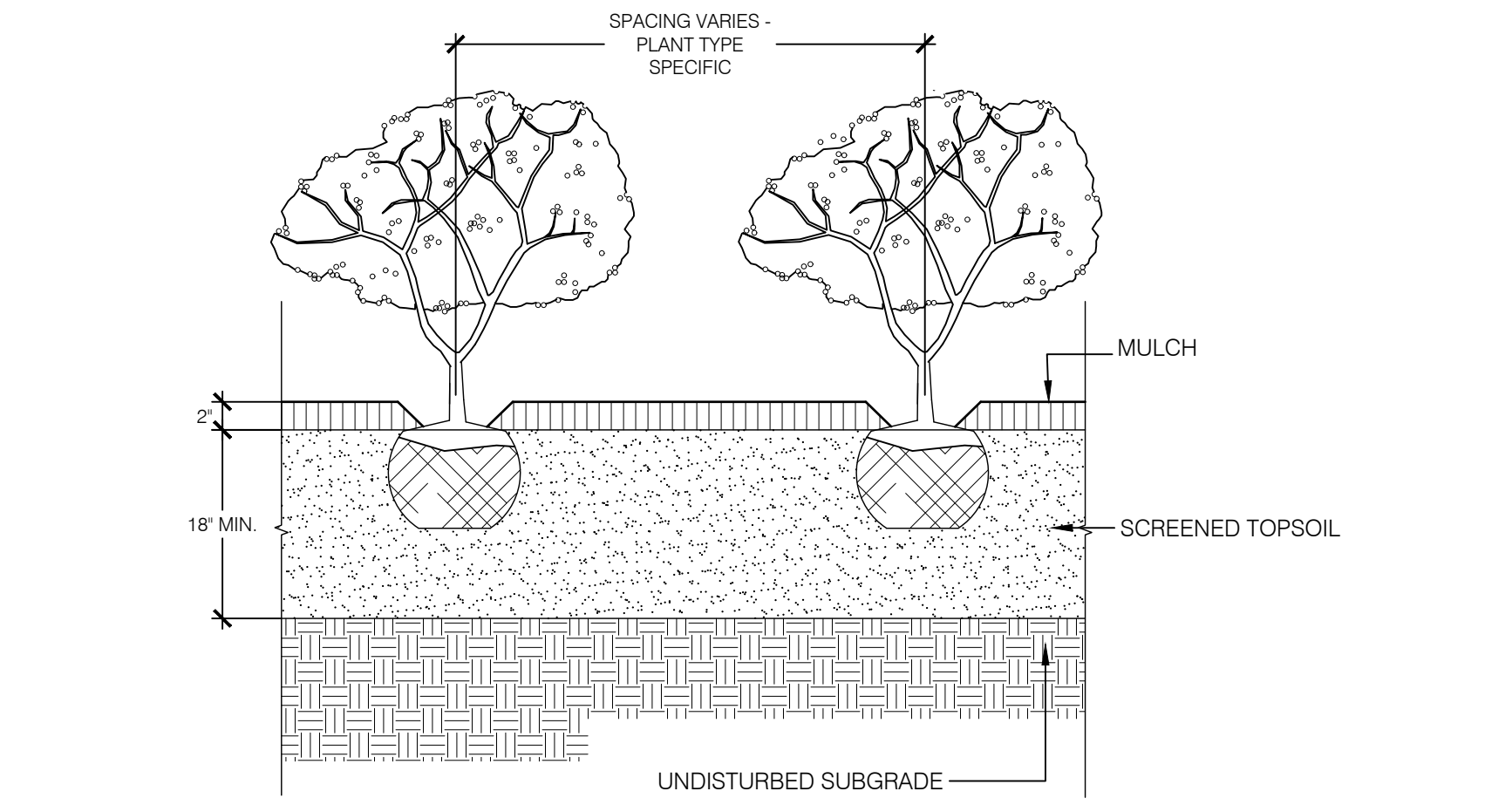
NO.	DATE	DESCRIPTION



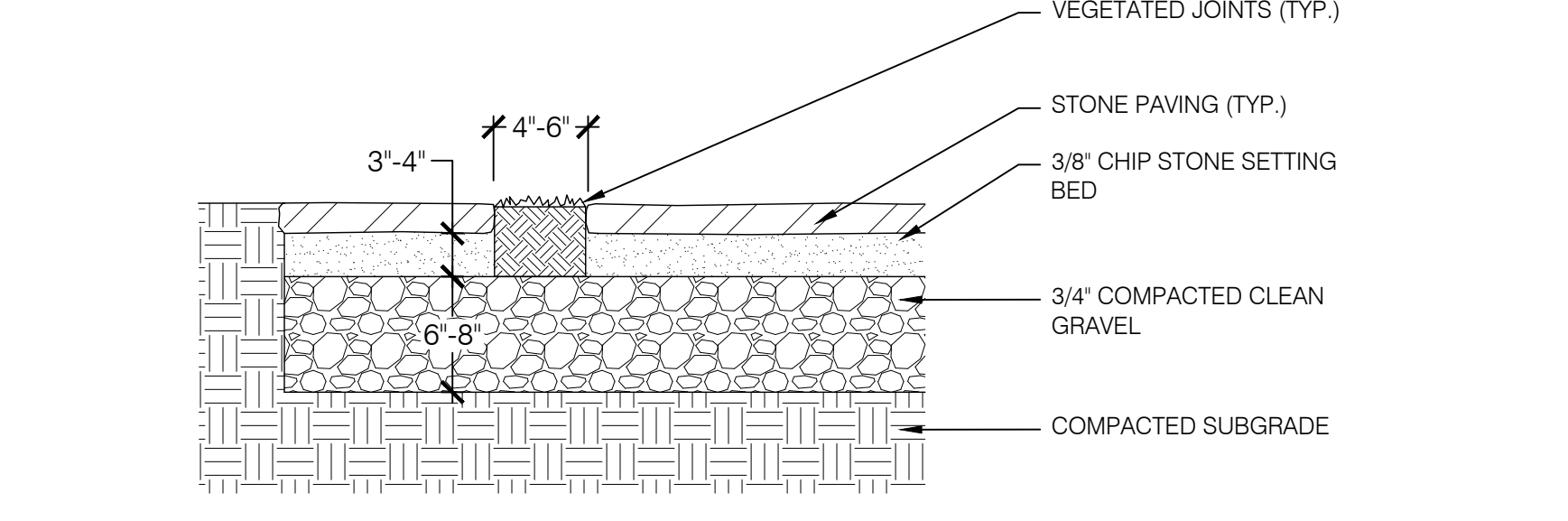
1 GROUNDCOVER PLANTING DETAIL
SCALE: NTS



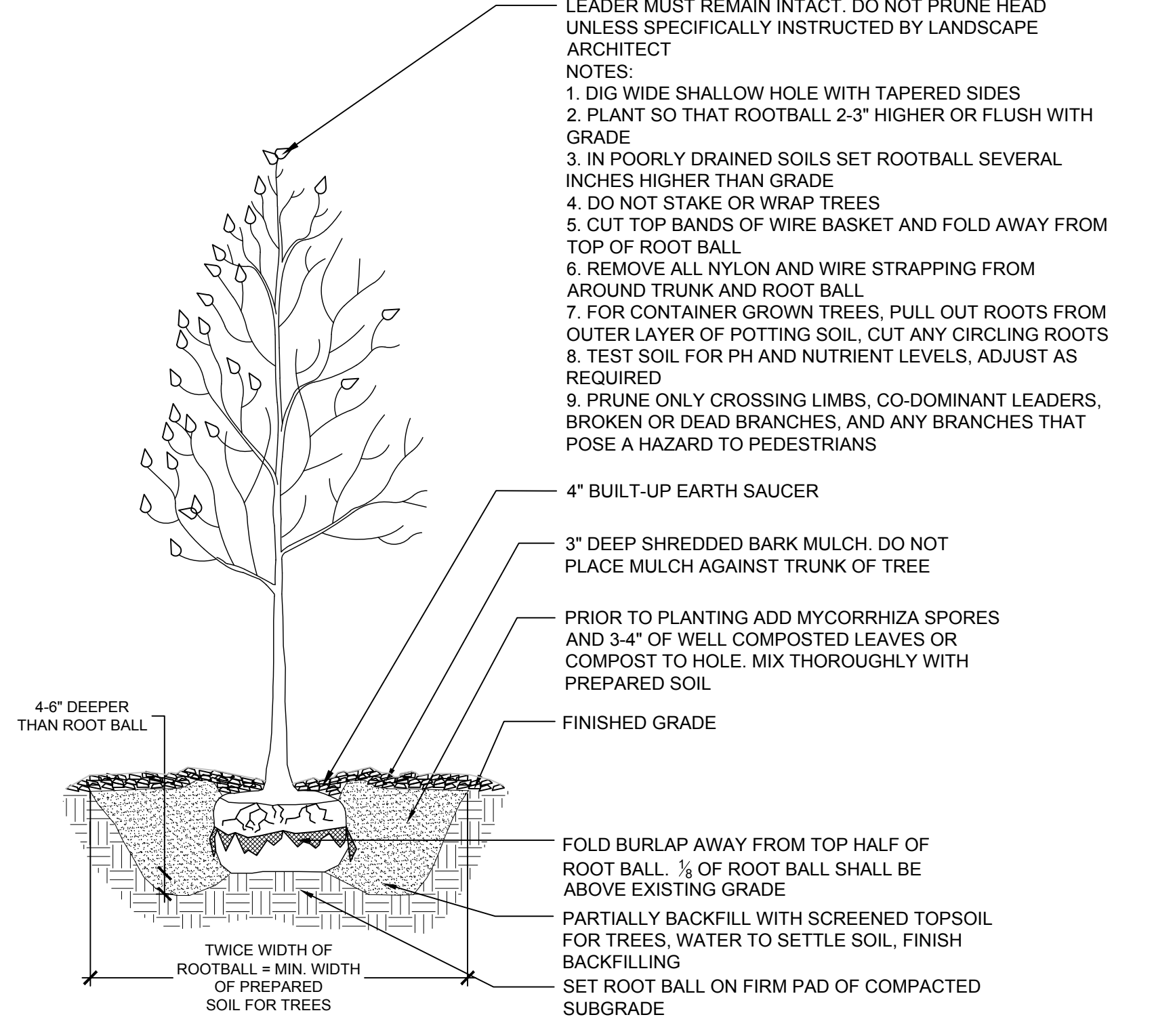
4 VEHICULAR STONE PAVING
SCALE: NTS



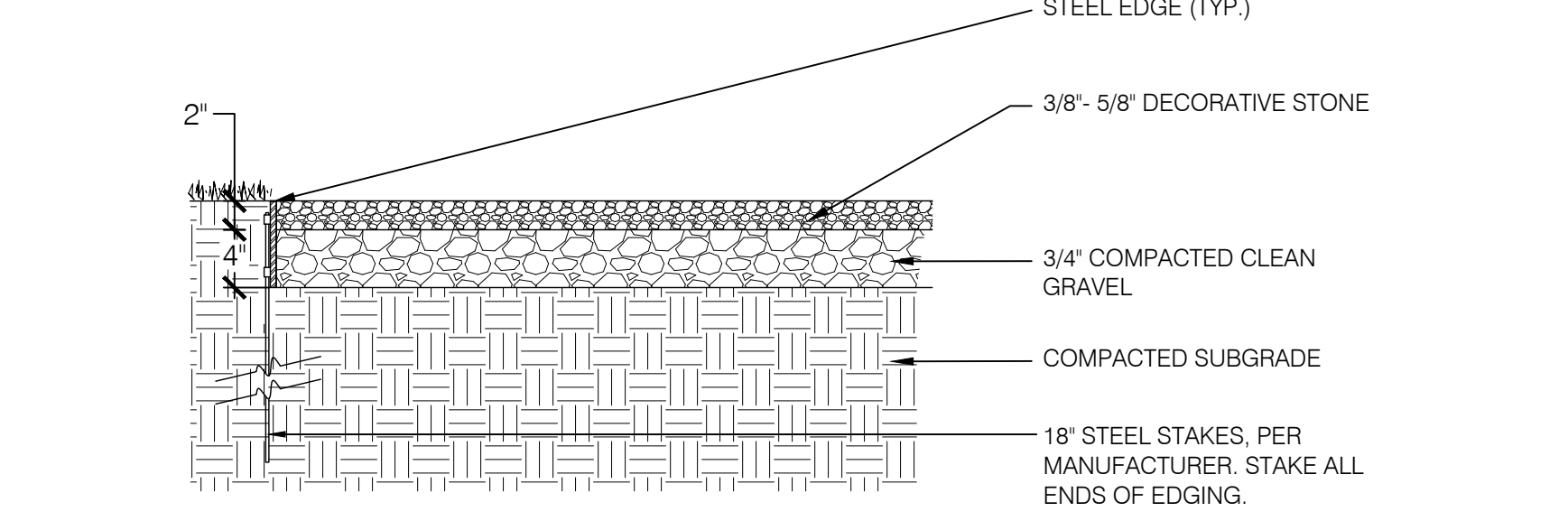
2 SHRUB PLANTING DETAIL
SCALE: NTS



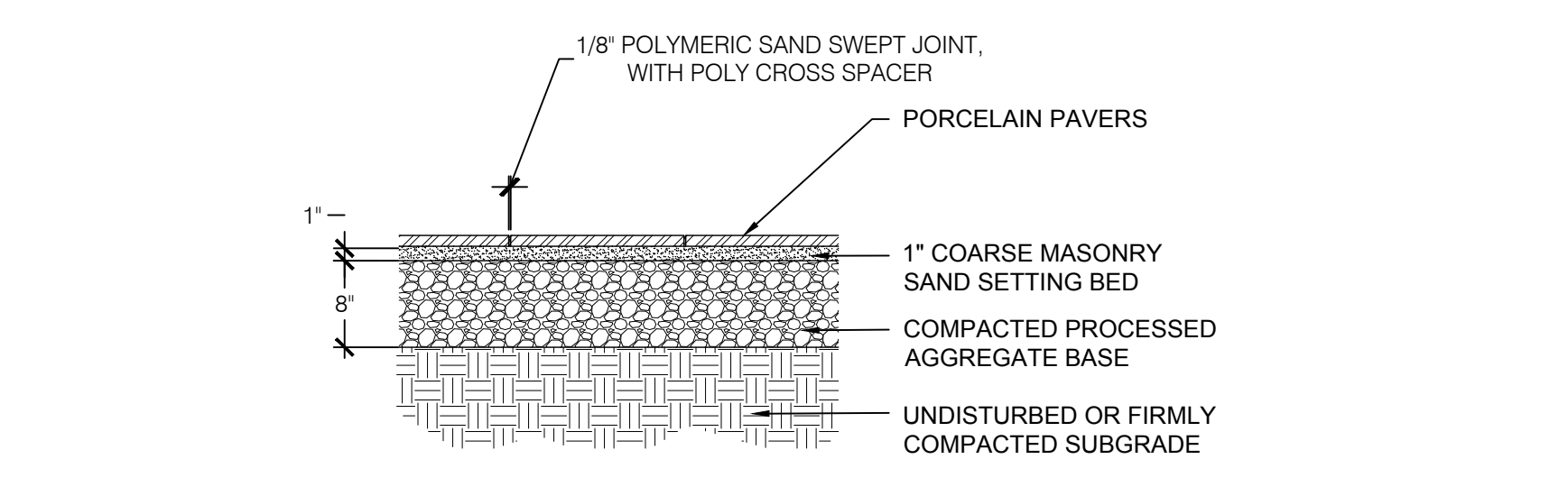
5 STONE PAVING WITH VEGETATED JOINTS
SCALE: NTS



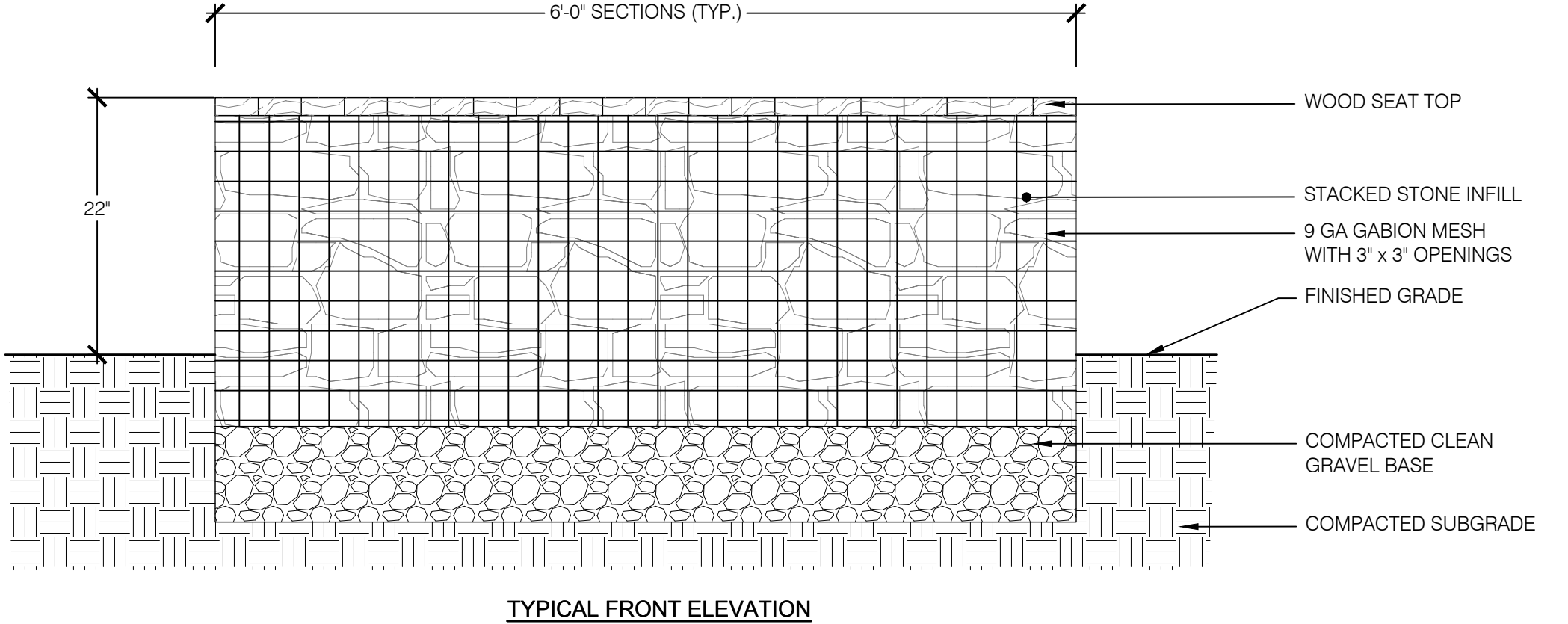
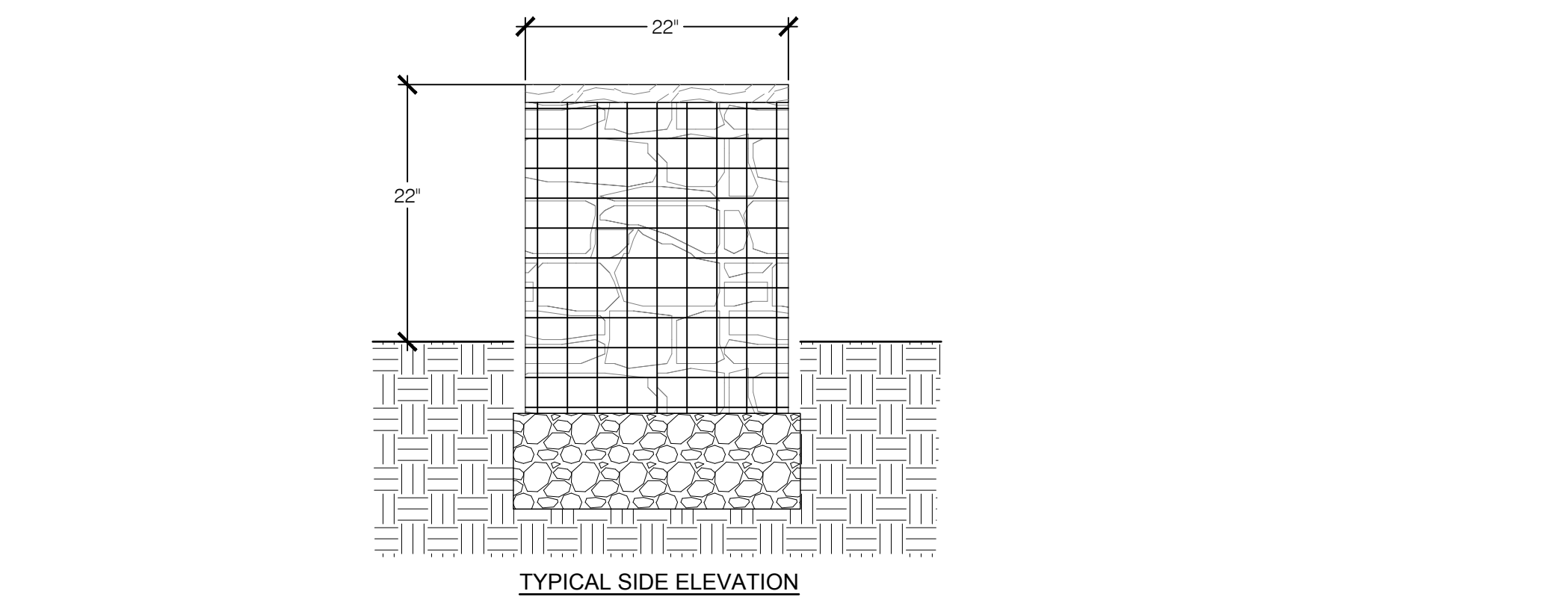
3 TREE PLANTING DETAIL
SCALE: NTS



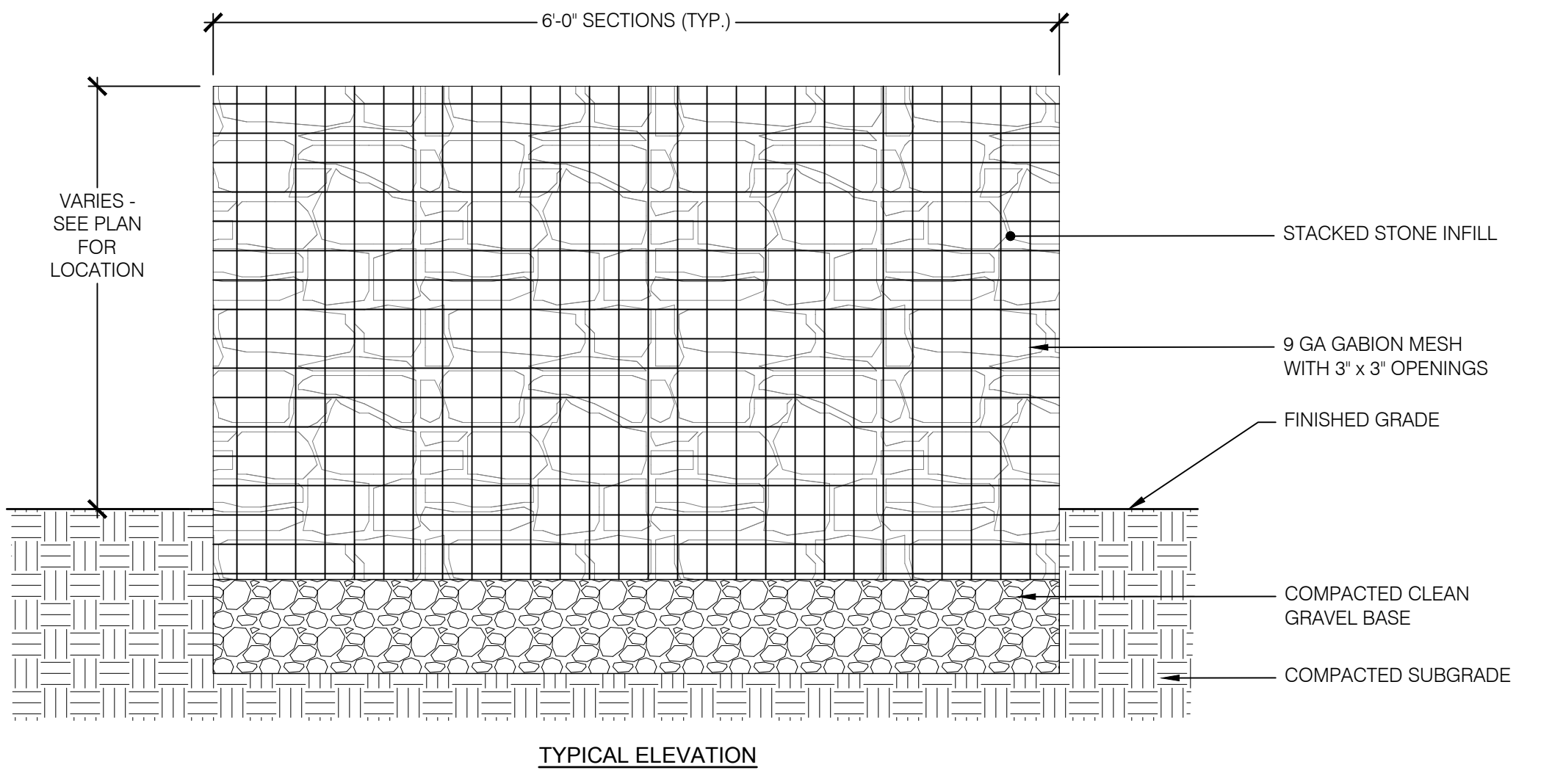
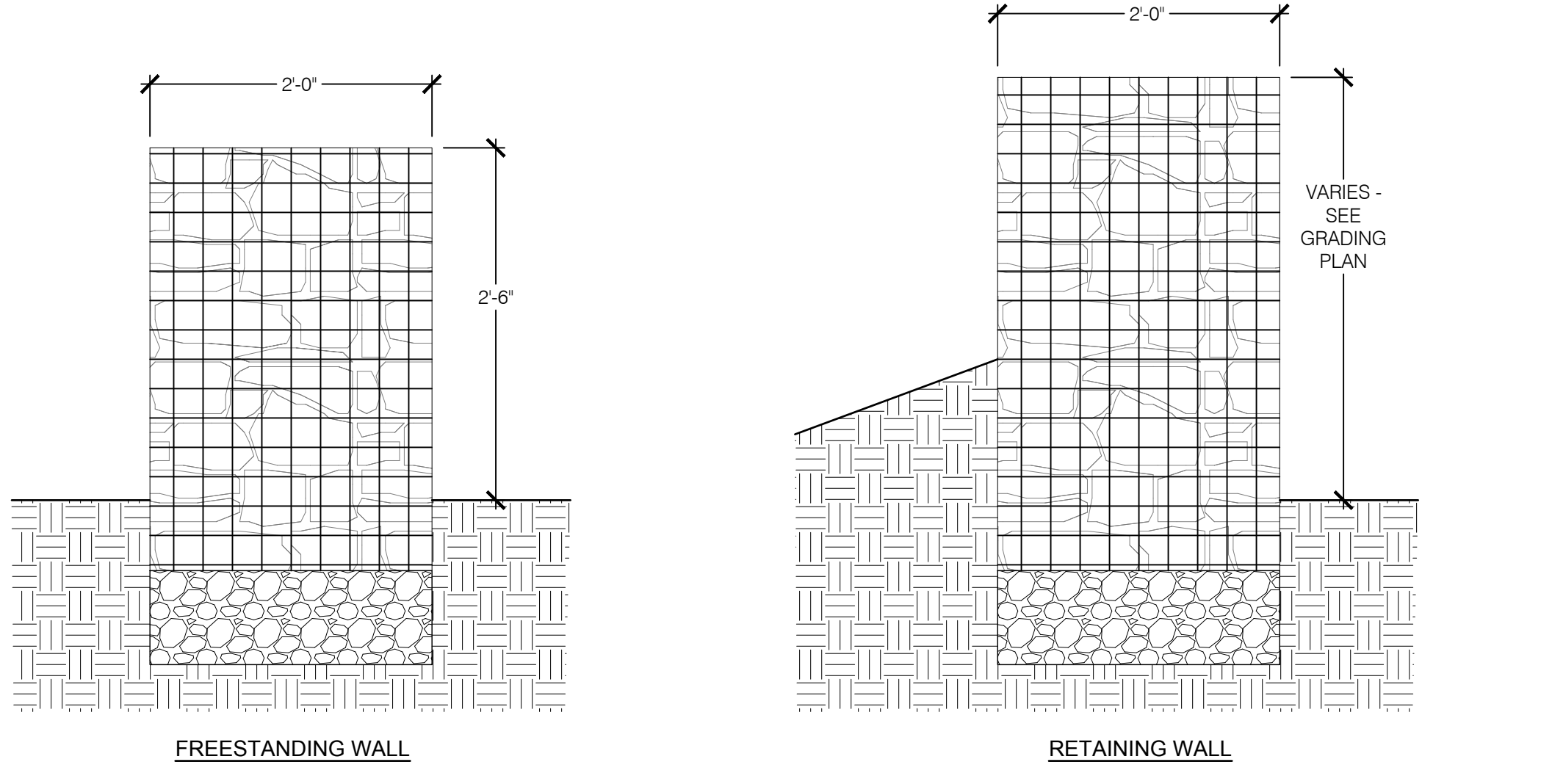
6 DECORATIVE GRAVEL
SCALE: NTS



7 PORCELAIN PAVERS ON SAND SETTING BED
SCALE: NTS



8 GABION BENCH
SCALE: NTS



9 GABION WALL
SCALE: NTS

Parasoleil

6510 W 91st Ave, Suite 100
Westminster, CO 80031
(303) 589-4524
hello@parasoleil.com
www.parasoleil.com

bb Leaves® (BBL)

May the leaves fall where they may ... and their shadows. This semi-random collection of a pattern allows for a dramatic shadow effect and does well in large installation spaces. Inspired from the drawings of artist, Barbara Bueller, who always signs her work in lower case initials.

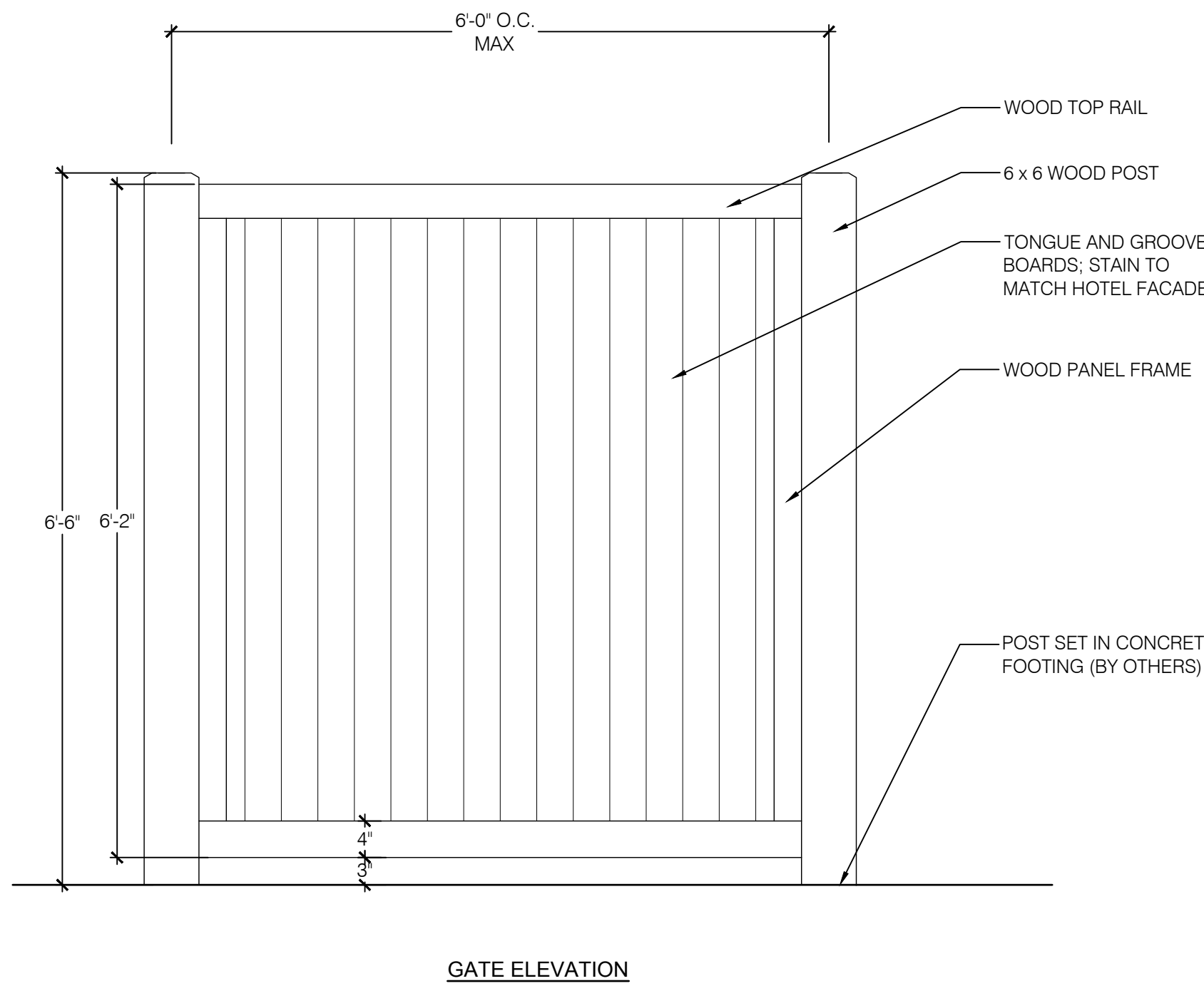


Shade Score	8/10
Privacy Score	7/10
Biomimicry Score	9/10
Structural Strength Score	9/10
Small Hole Size Score	3/10
MESH Score	3/10
Openness	17% Open

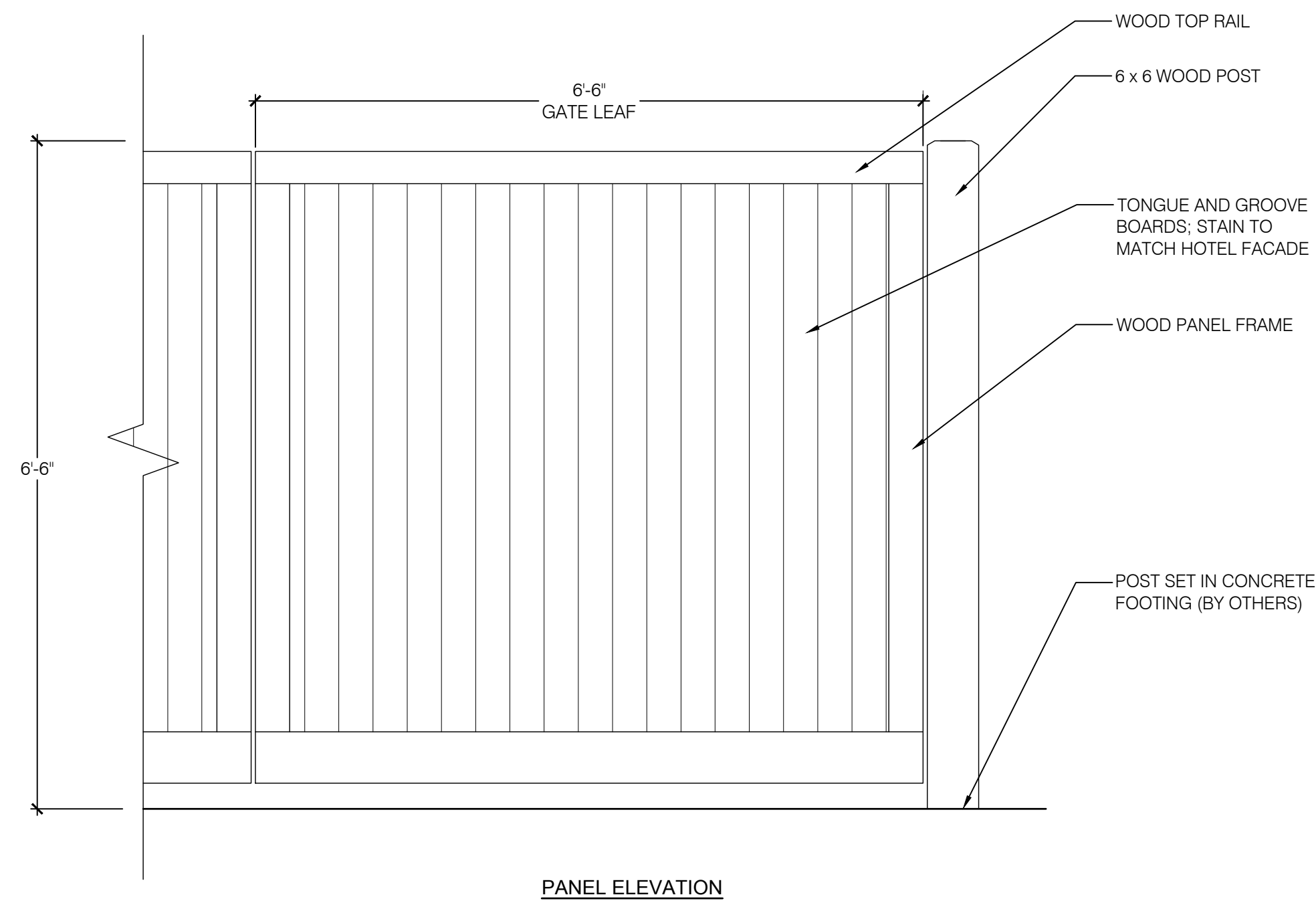
NOTES:
1. IMAGE IS FOR REFERENCE ONLY - FINAL SELECTION OF PATTERN AND COLOR: TBD.

1 METAL SCREEN / SHADE PANEL

SCALE: NTS



GATE ELEVATION

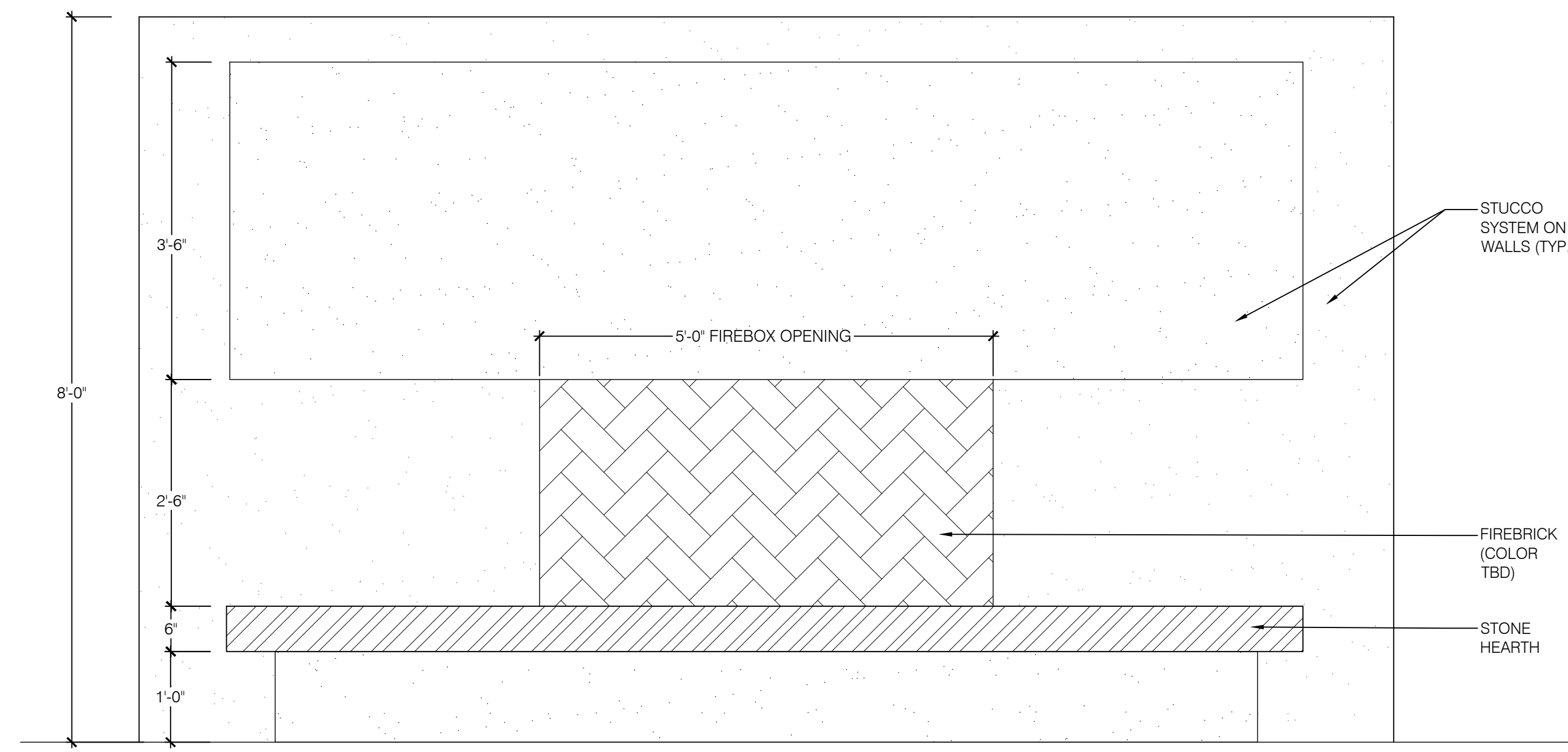


PANEL ELEVATION

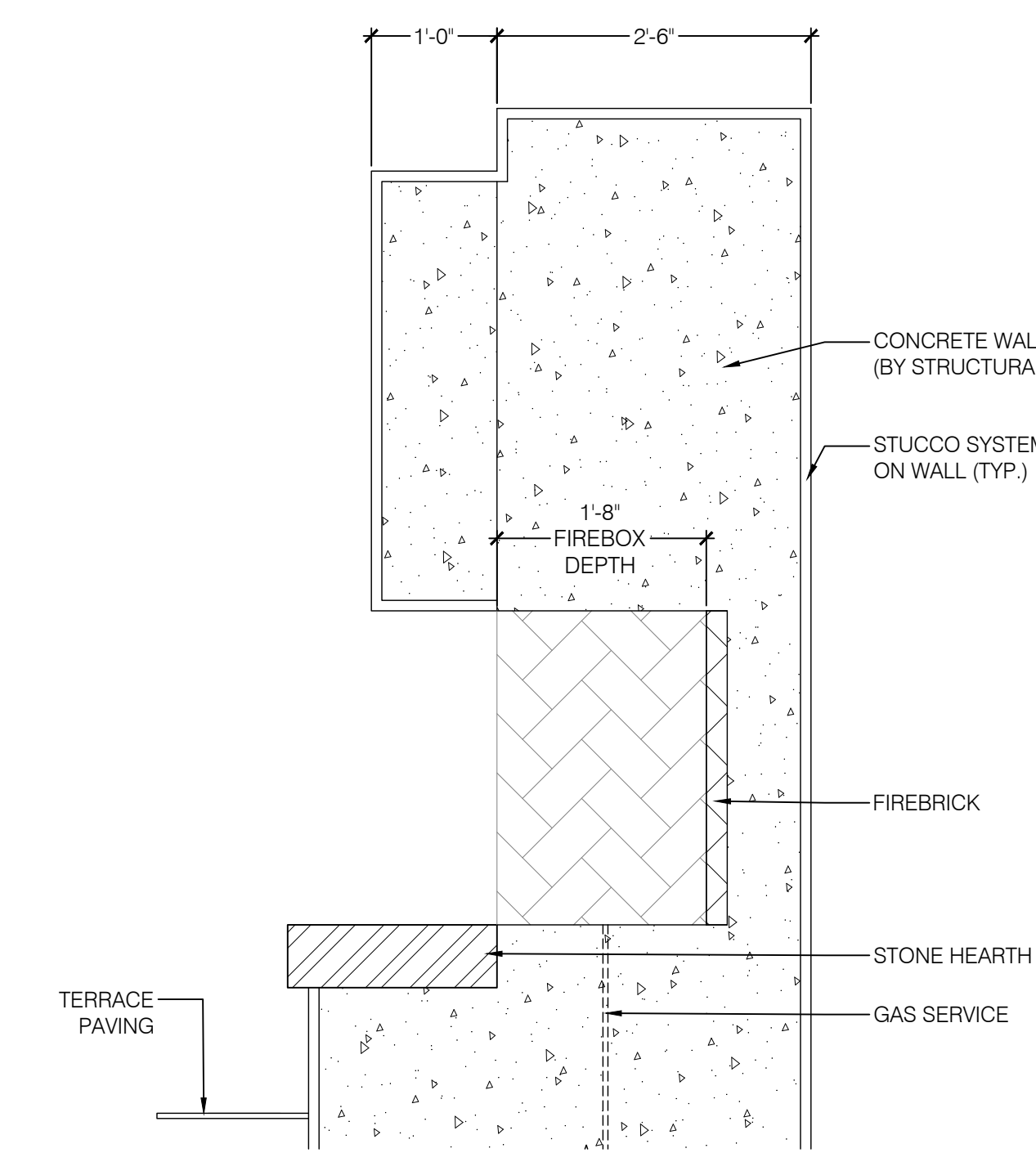
NOTES:
1. COMPLETE SHOP DRAWINGS SHALL BE PROVIDED BY FENCE CONTRACTOR FOR REVIEW AND APPROVAL.
2. FENCE SHALL BE PAINTED / STAINED TO MATCH BUILDING OR COLOR SELECTED BY CLIENT / ARCHITECT.

2 WOOD SCREEN FENCING AND GATES

SCALE: NTS



ELEVATION

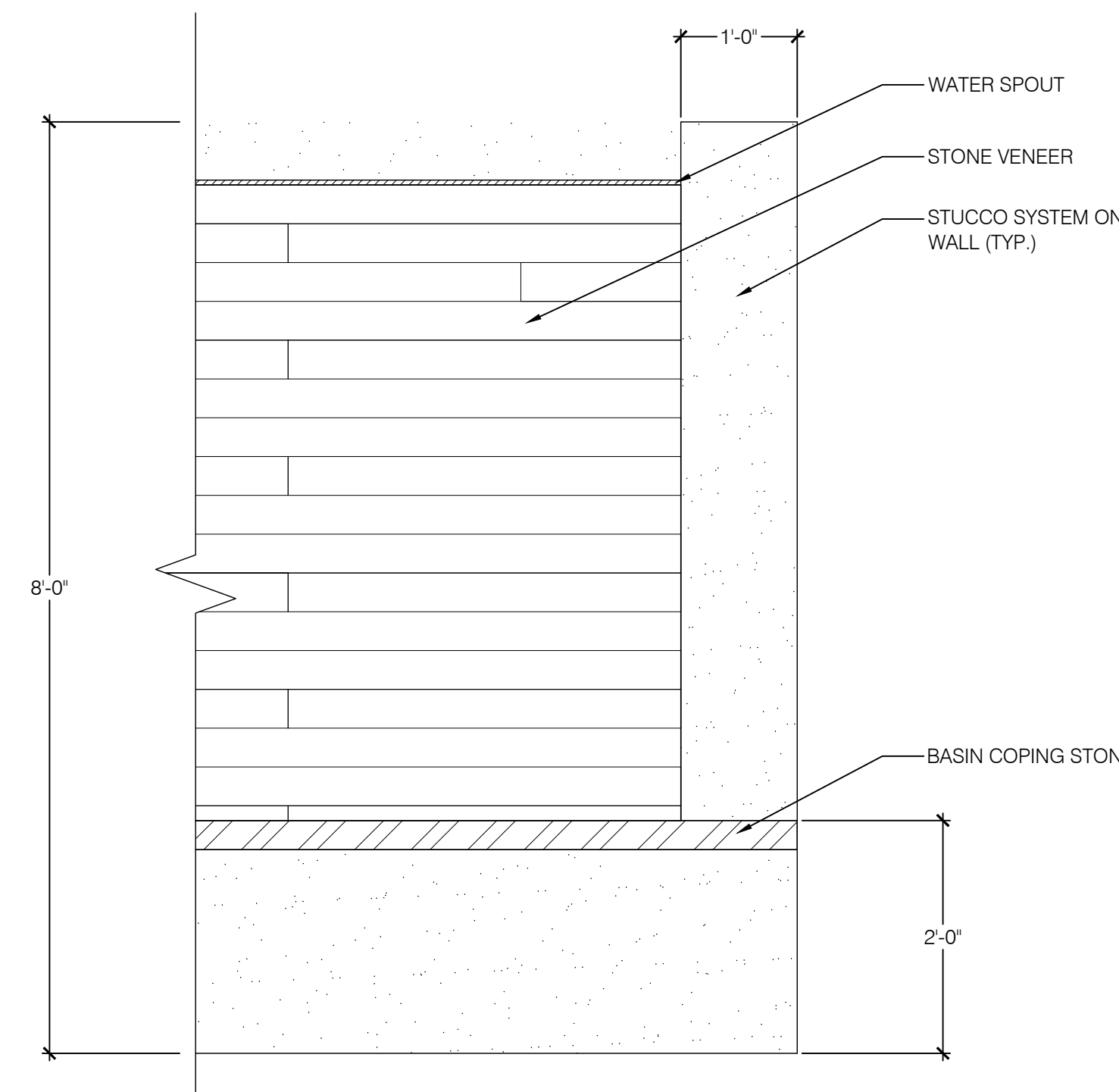


SECTION

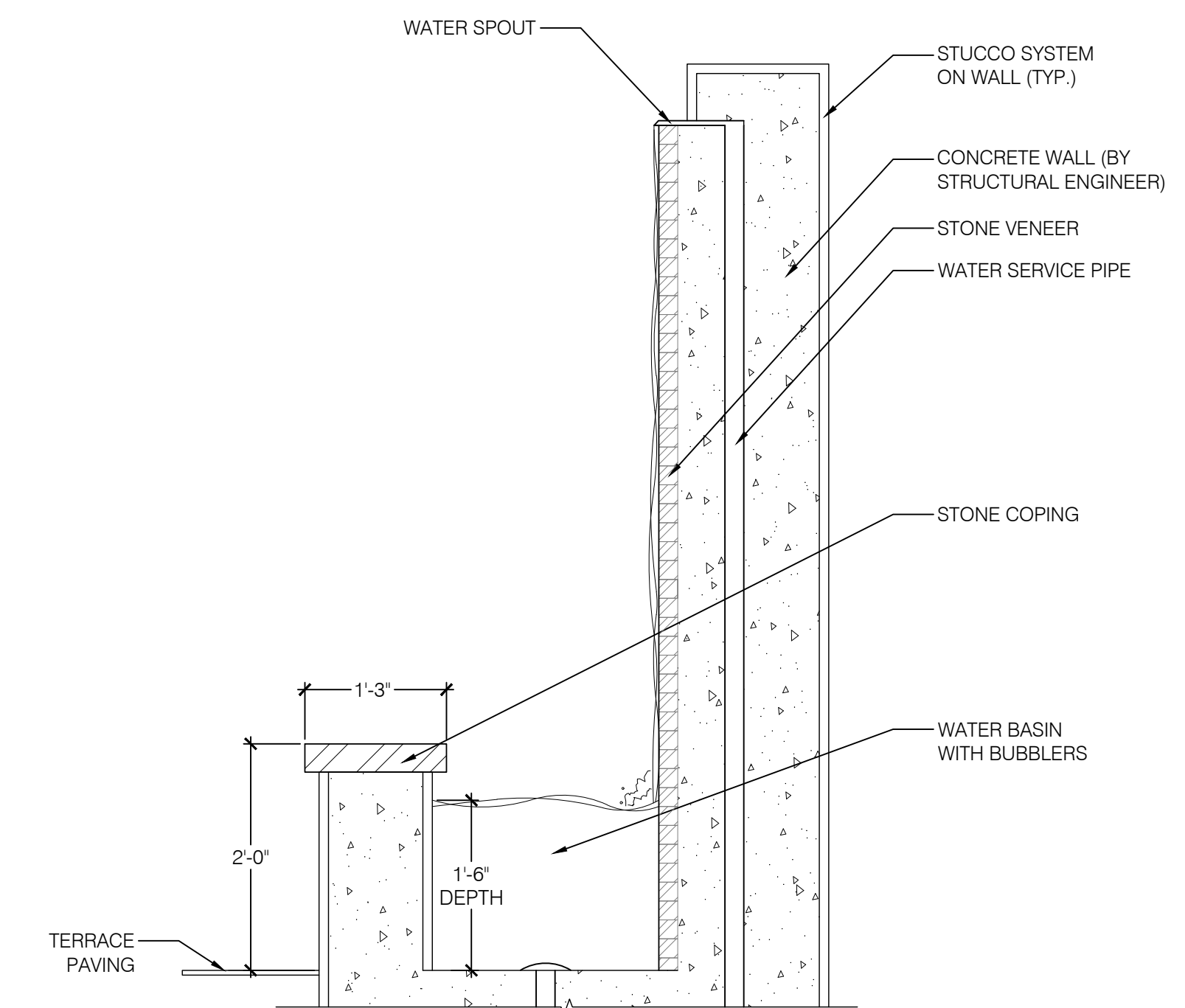
NOTES:
1. DETAIL IS FOR MATERIALS AND REFERENCE ONLY TO SHOW DESIGN INTENT. WALL CONSTRUCTION AND STRUCTURAL DETAILS BY OTHERS.
2. GAS / UTILITY CONNECTIONS BY OTHERS.

3 FIREPLACE - SCHEMATIC DETAILS

SCALE: NTS



WALL ELEVATION

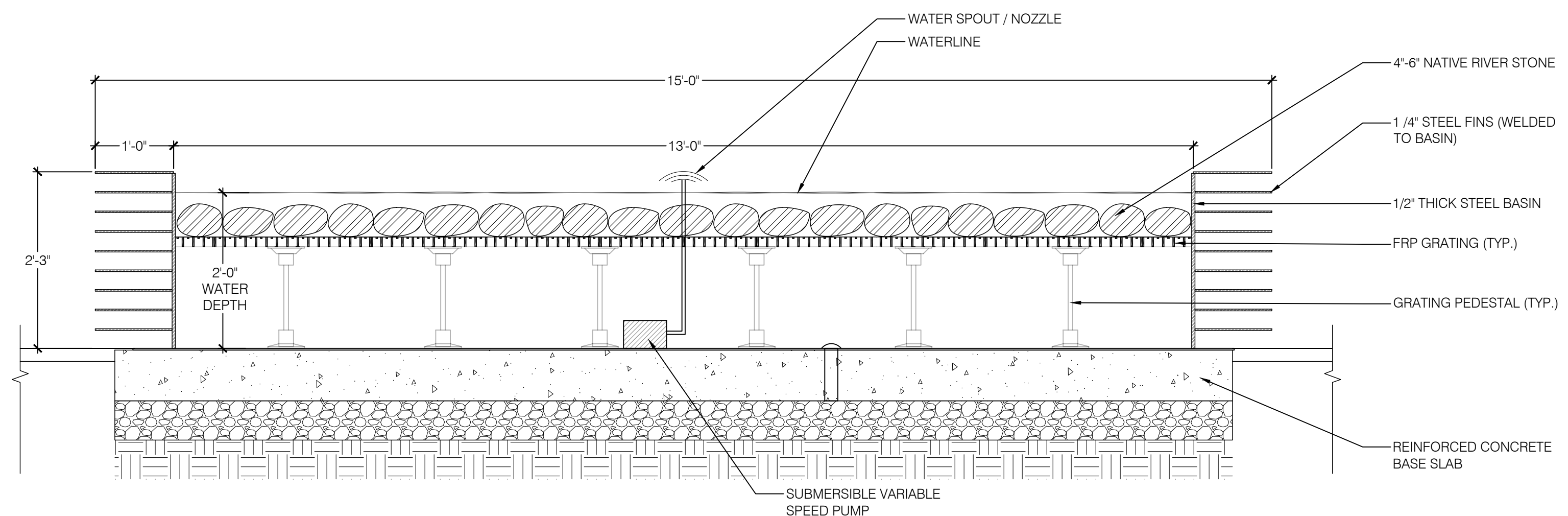


WALL AND BASIN SECTION

NOTES:
1. DETAIL IS FOR MATERIALS AND REFERENCE ONLY TO SHOW DESIGN INTENT. WALL CONSTRUCTION AND STRUCTURAL DETAILS BY OTHERS.
2. WATER / UTILITY CONNECTIONS BY OTHERS.

4 WATER WALL FEATURE - SCHEMATIC DETAIL

SCALE: NTS



NOTES:
1. DETAIL IS FOR MATERIALS AND REFERENCE ONLY TO SHOW DESIGN INTENT. COMPLETE SHOP DRAWINGS SHALL BE PROVIDED BY STEEL FABRICATOR FOR REVIEW AND APPROVAL.
2. WATER / UTILITY CONNECTIONS BY OTHERS.

5 WATER FEATURE WITH STEEL BASIN - SCHEMATIC DETAIL

SCALE: NTS

RICHARD TURLINGTON ARCHITECTS, INC.
Richard Turlington Architects Inc
55 Church Street, Suite 201
New Haven CT 06510
P: 203-772-2459
F: 203-862-0473
richardturlingtonarchitects.com

DESIGN ARCHITECT:
Bainfield Architecture
11 Chestnut St. #102
South Norwalk, CT 06854
Tel: 203-862-0709
Email: saebain@bainfield.com

CIVIL ENGINEER:
REDNESS & MEAD
22 1st Street
Stamford, CT 06905
Tel: (203) 327-4500
EMAIL:

LANDSCAPE ARCHITECT:
ERIC RAINS LANDSCAPE ARCHITECTS
11a N Main Street
Norwalk, CT
Tel: 203-354-6500
EMAIL: brian@ericrains.com

STRUCTURAL ENGINEER:
Michael Horton Associates, Inc
151 Meadow St., 2nd Floor
Branford, CT 06415
Tel: 203-463-8900
Email: alombard@mha-eng.com

MEP ENGINEER:
B2R Consulting Engineers, PLLC
2777 Sumner St., Suite 606
Stamford, CT 06905
Tel: 203-548-9959
Email: joseph.bartels@b2rce.com

INTERIOR DESIGNER:
INNOVATION
7 Via Roma Rd
Darien, MA 01923
Tel: 948-683-7123
Email: cmc@innova.com

KITCHEN DESIGNER:
Tamarack Food Service Equipment
8 Harporth St.
Merriden, MA 02648
Tel: 508-338-8200
www.tamarackmerriden.com

PROJECT
DELAMAR WESTPORT INN
1595 Post Rd E.
Westport, CT 06880

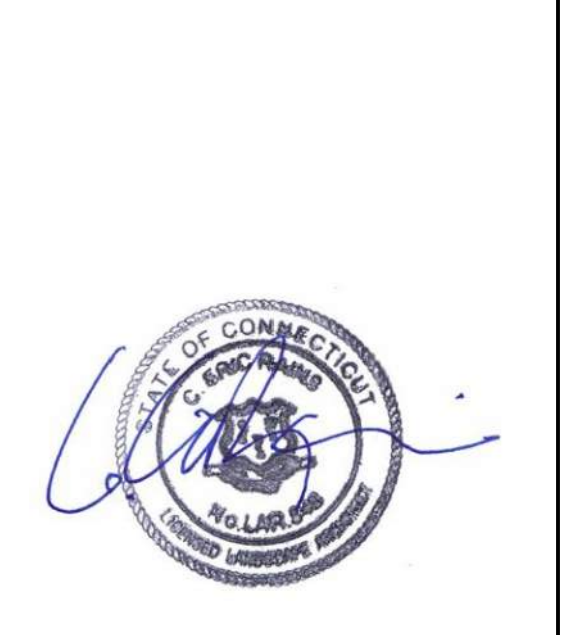
PERMIT SET
REVISION
PERMIT SET

NO.	DATE	DESCRIPTION

DRAWING TITLE
LANDSCAPE SITE DETAILS - 2

L-4.10

PROJECT NO 55692
SCALE AS NOTED
DATE ISSUED JUNE 7, 2023
AUTHOR --
This drawing, including designs and arrangements represented thereby, are and shall remain in the property of the Architect. NO part thereof shall be copied, disclosed to others or used in connection with any work or project other than the specific project for which it has been prepared or reviewed without the written consent of the Architect.



PROJECT
DELAMAR WESTPORT INN

1595 Post Rd E.
Westport, CT 06880

PERMIT SET

Table with 3 columns: NO., DATE, DESCRIPTION. Contains a single row for the permit set.

DRAWING TITLE
SITE LIGHTING DETAILS

L-4.20

PROJECT NO 55692
SCALE AS NOTED
DATE ISSUED JUNE 7, 2023
AUTHOR --

This drawing, including designs and arrangements represented thereby, are and shall remain in the property of the Architect. No part thereof shall be copied, disclosed to others or used in connection with any work or project other than the specific project for which it has been prepared or reviewed without the written consent of the Architect.

Specifications for HEVI LITE, INC. HL-904. Includes description, material, finish, LED options, voltage, mounting, accessories, and a detailed technical drawing of the light fixture with dimensions and cutaway views.

3 L-3 : WASH LIGHT

SCALE: NTS

Stringer-Globes BPS-307 Specifications. Includes description, globe size, LED lamps, lamp spacing, globe colors, cable, mounting options, and a detailed technical drawing of the stringer-globe fixture.

Table with 6 columns: PRODUCT, SPACING, LAMP, WIRE, GLOBE, MOUNTING OPTION, LENGTH. Lists specifications for BPS-307.

Current® currentlighting.com/beacon. Includes logo, website, and contact information for Beacon lighting products.

7 L-7 : CATENARY LIGHT

SCALE: NTS

IMLIGHTING PA7R IMPACT RATED BOLLARD. Includes description, dimensions, delivered lumens table, and technical drawing of the bollard light fixture.

4 L-4 : BOLLARD LIGHT

SCALE: NTS

BEACON RATIO Wall RVL1RWL2 LED WALL PACK. Includes description, features, specifications, and technical drawing of the wall pack light fixture.

Current® currentlighting.com/beacon. Includes logo, website, and contact information for Beacon lighting products.

8 L-8 : WALL PACK LIGHT

SCALE: NTS

Specifications for HEVI LITE, INC. L-1. Includes description, material, finish, LED options, voltage, mounting, accessories, and a detailed technical drawing of the pendant light fixture.

1 L-1 : PENDANT LIGHT

SCALE: NTS

IMLIGHTING SL1 LED SITE LIGHTFORMS. Includes description, standard features, and technical drawing of the site light form fixture.

Current® currentlighting.com/kimlighting. Includes logo, website, and contact information for Kimlighting products.

5 L-5 : AREA LIGHT ARM MOUNT

SCALE: NTS

IMLIGHTING SL1 LED SITE LIGHTFORMS. Includes description, standard features, and technical drawing of the site light form fixture.

2 L-2 : AREA LIGHT

SCALE: NTS

IMLIGHTING SL1 LED SITE LIGHTFORMS. Includes description, standard features, and technical drawing of the site light form fixture.

Current® currentlighting.com/kimlighting. Includes logo, website, and contact information for Kimlighting products.

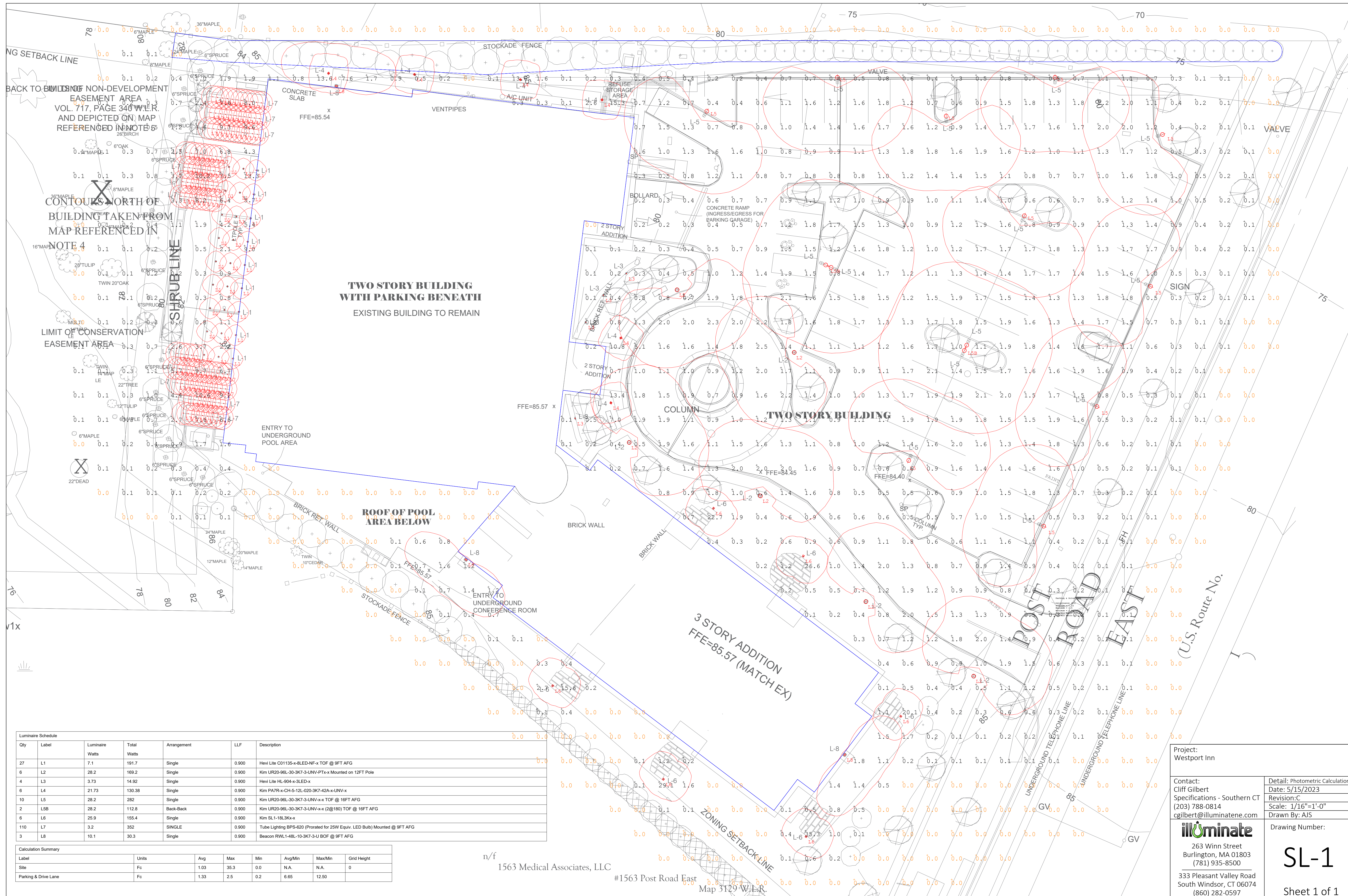
6 L-6 : ANGLED BOLLARD LIGHT

SCALE: NTS

Current® currentlighting.com/kimlighting. Includes logo, website, and contact information for Kimlighting products.

7 L-7 : CATENARY LIGHT

SCALE: NTS



Qty	Label	Luminaire Watts	Total Watts	Arrangement	LLF	Description
27	L1	7.1	191.7	Single	0.900	Hevi Lite C01135-x-8LED-NF-x TOF @ 9FT AFG
6	L2	28.2	169.2	Single	0.900	Kim UR20-96L-30-3K7-3-UNV-PTx-x Mounted on 12FT Pole
4	L3	3.73	14.92	Single	0.900	Hevi Lite HL-904-x-3LED-x
6	L4	21.73	130.38	Single	0.900	Kim PA7R-x-CH-5-12L-020-3K7-42A-x-UNV-x
10	L5	28.2	282	Single	0.900	Kim UR20-96L-30-3K7-3-UNV-x-x TOF @ 16FT AFG
2	L5B	28.2	112.8	Back-Back	0.900	Kim UR20-96L-30-3K7-3-UNV-x-x (2@180) TOF @ 16FT AFG
6	L6	25.9	155.4	Single	0.900	Kim SL1-18L3Kx-x
110	L7	3.2	352	SINGLE	0.900	Tube Lighting BPS-620 (Prorated for 25W Equiv. LED Bulb) Mounted @ 9FT AFG
3	L8	10.1	30.3	Single	0.900	Beacon RWL1-48L-10-3K7-3-U BOF @ 9FT AFG

Label	Units	Avg	Max	Min	Avg/Min	Max/Min	Grid Height
Site	Fc	1.03	35.3	0.0	N.A.	N.A.	0
Parking & Drive Lane	Fc	1.33	2.5	0.2	6.65	12.50	

n/f
 1563 Medical Associates, LLC
 #1563 Post Road East
 Map 3129 W.L.R.

Project:
Westport Inn

Contact:
Cliff Gilbert
Specifications - Southern CT
(203) 788-0814
cgilbert@illuminatene.com

Detail: Photometric Calculation
Date: 5/15/2023
Revision: C
Scale: 1/16"=1'-0"
Drawn By: AJS

Drawing Number:
SL-1

illuminatene
 263 Winn Street
 Burlington, MA 01803
 (781) 935-8500
 333 Pleasant Valley Road
 South Windsor, CT 06074
 (860) 282-0597

Sheet 1 of 1