



WESTPORT CONNECTICUT
PARKS AND RECREATION DEPARTMENT
LONGSHORE CLUB PARK
260 SOUTH COMPO ROAD
WESTPORT, CT 06880

LEGAL NOTICE OF MEETING

Notice is hereby given that the Parks and Recreation Commission will hold a public meeting on Wednesday, May 17, 2023, at 7:30pm. It will be held electronically via zoom. Meeting materials will be available on the Meeting List & Calendar page of the Town website westportct.gov, along with the meeting notice.

Join Zoom Meeting

<https://us02web.zoom.us/j/86263989353?pwd=ckN5aDM5VVZWdWl4andKcDgxeW9XUT09>

Meeting ID: 862 6398 9353

Passcode: 949181

MEETING AGENDA

1. Approval of Minutes: March 15, 2023
2. Public Comment
3. Reports of
 - Golf Advisory Committee
 - Parks Advisory Committee
 - Racquets Advisory Committee
4. To take such action as the meeting may determine related to a request for a porta-john to be placed at Old Mill Beach.
5. Introduction of proposed smoking/vaping policy. (Discussion only)
6. Longshore Capital Improvement Plan final report (Discussion only)
7. Commissioner's Comments
8. Administrative Report

Parks and Recreation Commission

It is the policy of the Town of Westport that all Town-sponsored public meetings and events are accessible to people with disabilities. If you need assistance in participating in a meeting or event due to a disability as defined under the Americans with Disabilities Act, please contact Westport's ADA Coordinator at 203-341-1043 or eflug@westportct.gov at least three (3) business days prior to the scheduled meeting or event to request an accommodation.

D R A F T



**Town of Westport
Parks & Recreation**
WESTPORT PARKS AND RECREATION COMMISSION
Longshore Club Park, 260 South Compo Road
Westport, CT 06880

March 21, 2023

The Westport Parks and Recreation Commission held a meeting on Wednesday, March 15, 2023 @ 7:35 pm. It was held in the Town Hall auditorium, and livestreamed on the Town's website.

Members Present:

David Floyd, Chairman; Elaine Whitney, Alec Stevens, Matthew Haynes, Christine O'Keeffe

Members Absent:

None

Also Present:

Jennifer Fava, Director of Parks and Recreation; Rick Giunta, Deputy Director Parks and Recreation; John Broadbin, Deputy Director of Public Works; Matthew Mandell, Executive Director of the Westport Weston Chamber of Commerce, presenters noted in the minutes, along with members of the public.

1. Approval of minutes: February 15, 2023 and Special Meeting March 2, 2023

(Note: Approval of minutes transpired after Public Comment.)

Upon a motion by Alec Stevens to approve the February 15, 2023, minutes seconded by Christine O'Keeffe. Passed 4-0-1. Elaine Whitney abstained.

Upon a motion by David Floyd to approve the March 2, 2023 minutes seconded by Elaine Whitney. Passed 5-0

2. To take such action as the meeting may determine related to a banner request from the Westport Weston Chamber of Commerce regarding the 2023 Dog Festival.

Matthew Mandell presented.

Public Comment: Public comment was provided related to the banner request.

Upon a motion made by Matthew Haynes, seconded by Elaine Whitney.

The Parks and Recreation Commission approves the request from the Westport Weston Chamber of Commerce to hang one (1) banner at Winslow Park for a period not to exceed 10 days for the annual dog festival, unless event is postponed to raindate.

DRAFT MINUTES SUBJECT TO REVIEW, CORRECTION, AND APPROVAL BY THE
PARKS & RECREATION COMMISSION OF THE TOWN OF WESTPORT

Recordings of this meeting can be found at:

<https://www.westportct.gov/government/appointed-boards-a-z/parks-and-recreation-commission/meeting-agenda-and-minutes>

D R A F T

Upon a motion for an amendment made by Elaine Whitney and seconded by Christine O’Keefe and passed 4-1.

The Parks and Recreation Commission approves the request from the Westport Weston Chamber of Commerce to hang one (1) banner at Winslow Park for a period not to exceed 10 days for the annual dog festival, unless event is postponed to raindate, with the expectation that the Westport Weston Chamber of Commerce returns next year to review this years event.

Upon a motion made by Elaine Whitney, seconded by Christine O’Keefe to accept the motion as amended and approved 4-1.

RESOLVED: The Parks and Recreation Commission approves the request from the Westport Weston Chamber of Commerce to hang one (1) banner at Winslow Park for a period not to exceed 10 days for the annual dog festival, unless event is postponed to raindate, with the expectation that the Westport Weston Chamber of Commerce returns next year to review this years event.

3. Public Comment: Members of the public provided comments related to the Dog Festival Event.

No action taken by the Commission.

4. Reports of:

Golf Advisory Committee: Jane Dally, Chair of the GAC, presented.

Parks Advisory Committee: David Floyd, Chairman of the PRC, presented.

Racquets Advisory Committee: No representative was present.

5. To take such action as the meeting may determine related to a request from the Department of Public Works to use a portion of Winslow Park for a project staging area.

Bryan Thompson, WPCA Collections Systems Supervisor presented.

Upon a motion made by Elaine Whitney, seconded by Matthew Haynes, approved 5-0.

RESOLVED: The Parks and Recreation Commission approves the request from the Department of Public Works to utilize a portion of Winslow Park for a project staging area as presented.

6. To take such action as the meeting may determine relative to the Longshore Capital Improvement Plan. (Continuation from March 2, 2023 meeting – no additional materials presented)

Gary Sorge presented.

Public Comment: Multiple members of the public made comments.

DRAFT

Upon a motion made by Matthew Haynes, and seconded by Elaine Whitney, passed unanimously 5-0

RESOLVED: The Parks and Recreation Commission here by adopts the Longshore Club Park Capital Improvement Plan dated March 15, 2023, as drafted by Stantec relating to zones 1-3 and 5-7. As it relates to zone 4, the Commission adopts option 2 which depicts the new clubhouse being located in the vicinity of the currently existing clubhouse.

Upon a motion made by David Floyd, seconded by Alec Stevens, passed 3-2.

RESOLVED: The Parks and Recreation Commission adopts the ten-year capital forecast alternative 2 as depicted in the aforementioned plan.

7. **Commissioner's Comments:** David Floyd presented.

8. **Administrative Report:** Jennifer Fava presented.

Upon a motion by Christine O'Keefe, seconded by Matthew Haynes, and passed unanimously 5-0, the meeting adjourned at 10:42 pm.

Respectfully,
Jamie Boone, Recording Secretary

Parks and Recreation Commission

Meeting Date: May 17, 2023

Agenda Item: #4

To take such action as the meeting may determine related to a request for a porta-john to be placed at Old Mill Beach.

Background Information:

A request was made by a member of the public to place a porta john at Old Mill Beach.

Back-up Documents:

Memo RE: Request for Porta-John at Old Mill Beach from Jennifer Fava, Director of Parks and Recreation, dated May 10, 2023

Memo RE: Porta-john located at Old Mill for use of beach goers from Colin Kelly, Conservation Analyst, dated September 1, 2022

Memo RE: Request for updated comments regarding Porta-john located at Old Mill Parking Area from Colin Kelly, Conservation Director, dated February 6, 2023

Staff Recommendation:

Based upon the concerns of the Conservation Department and meeting the considerations noted in the memo from Director Fava, unless/until a different location can be found on this property, we advise that a porta-john not be placed at this site. We welcome a discussion and potential ideas from the Commission members, as well as those of the public.

Resolution Format:


The Parks and Recreation Commission approves the placing of a porta-john at Old Mill Beach as proposed.



WESTPORT CONNECTICUT

PARKS AND RECREATION DEPARTMENT
LONGSHORE CLUB PARK
260 COMPO ROAD SOUTH, WESTPORT, CT 06880

MEMO TO: Parks and Recreation Commission

MEMO FROM: Jennifer Fava, Director of Parks and Recreation 

DATE: May 10, 2023

RE: **Request for Porta-John at Old Mill Beach**

The Commission received a request to place a porta-john at Old Mill Beach. Based upon this request, staff reviewed the site to identify a possible location.

The proposed location, as indicated in the attached image, was selected based upon a number of considerations and the limited space on the property that meets these factors:

1. To keep it away from private homes.
2. To keep it away from the guard shack where staff are stationed.
3. To not take up any parking spaces as parking is already limited.
4. To allow access for regular clean-outs.
5. To minimize any visual intrusion.

The request and proposed location were shared with the Planning and Zoning Department and the Conservation Department in case any type of permitting was required. Planning and Zoning had no comments as it would not fall under their jurisdiction since it would be a temporary structure. The Conservation Department provided two memos related to this request (both attached). Both memos indicate their concerns for the placement of a porta-john at Old Mill, especially in this location for a variety of reasons, including, but not limited to:

- Close to the tidal resource.
- Located within the floodplain.
- It would be vulnerable to high tides, storm surge, and high winds.
- Length of time the unit would be in place.

Based upon the concerns of the Conservation Department and meeting the factors listed above unless/until a different location can be found on this property, we advise that a porta-john not be placed at this site. We welcome a discussion and potential ideas from the Commission members, as well as those of the public.


attachments



CONSERVATION DEPARTMENT
TOWN HALL – 110 MYRTLE AVENUE
WESTPORT, CT 06880
P 203.341.1170 F 203.341.1088

WESTPORT

MEMORANDUM

DATE: September 1, 2022
TO: Jen Fava, Director of Parks + Recreation
FROM: Colin Kelly, Conservation Analyst 
RE: Porta-john located at Old Mill for use of beach goers.

The Conservation Department reviewed your request for comment regarding the proposed location of a Porta-john unit. The Conservation Department holds jurisdiction for the neighboring properties under the Waterway Protection Line (WPL), however, your proposed placement of the unit is located outside of the WPL. Therefore, no permits will be required for this placement.

Conservation staff notes these facilities are generally used for short-term access; workers at construction sites, limited time-based events, or other similar proceedings. We understand this proposal is different, in that it is intended for long-term usage over the recreational season for beach patrons.

Staff notes the units are low cost, simple, and relatively small. However, there are several reasons the long-term deployment of the unit concerns us. The unit will be placed very close to the tidal resource, where any release of waste would cause an impact. The proposed location is near elevation 7± (from Town GIS) which would leave the unit vulnerable to high tides or storm surges. The location is within the floodplain and is proposed at the interface of the AE flood zone with a Base Flood Elevation (BFE) of 13.0' and the VE flood zone with a BFE of 14.0'. Any pending storm event or extreme tide would leave the unit vulnerable. In addition to the flooding storm events, staff is concerned with wind exposure. As we are aware, this location is open and will receive strong winds during storms, putting the unit at risk of being knocked over. Quick deployment of a contractor would be needed to remove the unit before each of these potential events. This may prove troublesome and expensive.

Lastly, we are concerned with the unit becoming an attractive nuisance. If not properly maintained and checked frequently, it could become an issue. There may be unintended consequences and possibility of vandalization that may occur without proper monitoring.

Thank you for the opportunity to comment.



WESTPORT

CONSERVATION DEPARTMENT
TOWN HALL – 110 MYRTLE AVENUE
WESTPORT, CT 06880
P 203.341.1170 F 203.341.1088

MEMORANDUM

DATE: February 6, 2023
TO: Jen Fava, Director of Parks + Recreation
FROM: Colin Kelly, Conservation Director 
RE: Request for updated comments regarding Porta-john located at Old Mill Parking Area.

Our office was made aware of the public comments from the January 18, 2023, Parks + Recreation Commission meeting requesting placement of a Porta-john unit in the Old Mill Beach area. This memo serves as an update to our comments from September 1, 2022, for a similar request.

The Conservation Department is concerned with unintentional spills or releases of waste that could potentially occur from a proposed Porta-john unit at Old Mill parking lot. The proposed location would be adjacent to the tidal resources from this parking lot. The tidal inlet to Sherwood Mill Pond is located ~10-25' to the east of the asphalt parking lot. This area is shown on the Town GIS as having an elevation of ~6' or 7'. The proposed unit would be located in a generally exposed area, without protection from wind gusts and/or storm events.

Conservation consulted with Ed Frawley, Parks + Recreation Department, regarding existing uses of Porta-johns. We understand that the town currently utilizes nine (9) portable units at Compo Beach Park during the off-season. These off-season unit numbers have increased over the last few years due to an increased demand from the public. In discussion with Mr. Frawley, these unit locations have been specifically selected to be near existing buildings or structures to limit the exposure from wind. This selection has, by its own nature, kept the siting of units from being near tidal resources. In addition, an anchoring system is utilized to minimize the possibility of tipping during inclement weather. We understand that Parks + Rec contracts with United Site Services for the installation and maintenance of these units. Our office contacted United and asked for the procedural standards they follow, and what site conditions would require anchoring. A request was made to their operations division, and we will share that information when it is available.

We would request that an alternative location be sought that provides more protection for the unit or keep the park un-serviced, as it has been in the past. The risk of impact to the environment can be mitigated by relocating the unit farther away from the tidal resource. Due consideration should be given to locating the Porta-john somewhere else in the park. Conservation acknowledges the inherent conflict this relocation of the Porta-john unit will have with residential uses around the parking lot. This may not sit well with the neighbors. We would recommend the Parks + Recreation Commission solicit comments from those immediately adjacent residents or not approve placement.

Thank you for the opportunity to comment.



May 3, 2023

Old Mill Beach

Proposed porta-john location

1 inch = 30 Feet



www.cai-tech.com



Proposed porta-john location

Data shown on this map is provided for planning and informational purposes only. The municipality and CAI Technologies are not responsible for any use for other purposes or misuse or misrepresentation of this map.

Parks and Recreation Commission

Meeting Date: May 17, 2023

Agenda Item: #5

Introduction of proposed smoking/vaping policy. (Discussion only).

Background Information:

In late 2019 and early 2020 an initial conversation regarding a no smoking policy was started by the Parks and Recreation Commission. Due to Covid and subsequent new Commission being seated, the discussion had been on hold. Due to continued concerns voiced by members of the public, staff are again bringing this topic to the Commission and have also included marijuana, along with tobacco, as items to be incorporated in the proposed smoking/vaping policy.

The focus of this policy is to protect all users of the specified facilities from secondhand smoke, in particular children.

Back-up Documents:

Memo from Jennifer Fava, Director of Parks and Recreation, RE: Proposed Smoking/Vaping Policy at Various Parks and Recreation Facilities dated May 10, 2023, including attachments

Staff Recommendation:

N/A


Resolution Format:

N/A



WESTPORT CONNECTICUT
PARKS AND RECREATION DEPARTMENT
LONGSHORE CLUB PARK
260 COMPO ROAD SOUTH, WESTPORT, CT 06880

MEMO TO: Parks and Recreation Commission

MEMO FROM: Jennifer Fava, Director of Parks and Recreation 

DATE: May 10, 2023

RE: **Proposed Smoking/Vaping Policy at Various Parks and Recreation Facilities**

BACKGROUND

In late 2019 and the beginning of 2020, the prior Parks and Recreation Commission began a discussion about banning smoking at Westport Town Beaches. The discussion spread to include facilities that typically are utilized by children in an effort to lessen their exposure to secondhand smoke. Due to the pandemic, the discussion was sidelined and with re-emerging interest in this topic, staff feel it is a good time to again start this discussion.

Over the past few years, we have heard requests from members of the public for the establishment of a smoking policy that would ban smoking at Westport beaches and areas of high use by children. Many of our surrounding communities and Connecticut communities in general have already established similar policies. Additionally, based upon the National Recreation and Park Association 2022 Agency Performance Review, four in five park and recreation agencies ban tobacco products at most/all of their parks and facilities. Furthermore, with the 2021 legalization of recreational marijuana, we have heard additional concerns related to secondhand smoke exposure from the smoking/vaping of cannabis as well.

PURPOSE

The purpose of this proposed policy is to protect non-smoking adults, and in particular, children from the potential effects of inhaling secondhand smoke of any kind. According to the CDC, secondhand smoke can cause a myriad of health problems including, but not limited to, ear and respiratory infections including triggering more frequent and severe asthma in children, and coronary heart disease, stroke and lung cancer in adults (Smoking and Tobacco Use from CDC - attached).

In addition to promoting the breathing of fresh air, it is also important to promote clean facilities while also helping to improve the environment. Cigarette butts on the ground not only pose a hazard to small children and wildlife, they are also one of the most common forms of ocean litter. Most cigarette filters are made from cellulose acetate which is not biodegradable and can be toxic.

With the legalization of marijuana, people have voiced concern of secondhand smoke from cannabis-type substances as well, so it has been included in this proposed policy. Per the CDC, "Secondhand marijuana

smoke contains many of the same toxic and cancer-causing chemicals found in tobacco smoke and contains some of those chemicals in higher amounts.” (Secondhand Marijuana Smoke from CDC - attached)

PROPOSED LANGUAGE

“Consuming, using, smoking, or vaping any cannabis-type substance or tobacco product is prohibited within the boundary of all Town-owned athletic fields, courts, playgrounds, pools, beaches, including but not limited to, concession areas, beach parking lots, and athletic field parking lots. In addition, consuming, using, smoking, or vaping any cannabis-type substance or tobacco product is prohibited within 25 feet of all Town-owned athletic fields, courts, playgrounds, and pools.”

ENFORCEMENT

The proposed language was written keeping the ability to enforce the policy in mind. As with all of the Parks and Recreation Department Rules and Regulations, these rules will be enforced by Department staff. If the person violating the rule does not adhere to staff direction and the encounter escalates, then the Police Department would be contacted for assistance. This is the same procedure utilized in the enforcement of all Parks and Recreation Department rules and regulations.

SUPPORTING DOCUMENTS

1. A summary of policies/regulations/ordinances of some surrounding towns and cities is attached as examples of the language and enforcement that is used.
2. Smoking & Tobacco Use from the CDC website
3. Tobacco Consumption in Parks – National Recreation and Park Association Position Statement
4. Secondhand Marijuana Smoke from the CDC website
5. Secondhand Marijuana Smoke – American Nonsmokers’ Rights Foundation

attachments

Smoking information from surrounding towns/cities - April 2023

* The term "Smoking" includes, but is not limited to, the act of lighting, smoking or carrying a lighted or smoldering cigarette, cigar, pipe of any kind or the use of electronic nicotine delivery system or electronic smoking devices such as e-cigarrets, e-pipes, e-hookas and e-cigars

	Allows Smoking	No Smoking	Price of Fine		Who Enforces	Facilities Include: (No Smoking)	Verbiage
Milford		X	Cost of Infraction determined by police	Code of Ordinances	Milford Police	Include but not limited to: public playground, park, beach or recreation areas	City of Milford: Code of Ordinances: Section 16-2 (a)subsection (2) -It shall be unlawful and a violation of this chapter for any person to, within the boundaries of any public playground, park, beach or recreational areas within the City: Consume, use or smoke any cannabis-type substances as defined in Connecticut General Statutes § 21a-240, or use tobacco products of any kind as defined in Section 10-23 of the Milford Code of Ordinances.
Stamford	X						
Sherwood Island & State Parks		X		CT DEEP Policy	Police	Smoking Cannabis/Marijuana is prohibited in all State Parks and Forests.	Smoking tobacco is allowed outdoors in state parks. However, smoking (tobacco) is not allowed within 25 feet of any doorway, window or air intake vent of any facility, building or establishment, therefore smoking (tobacco) is not allowed in outdoor areas that are close to buildings (like the beach pavilions, etc). Smoking Cannabis/Marijuana is prohibited in all State Parks and Forests.
Bridgeport		X	\$99.00	Rules & Regulations	Bridgeport Police	Includes: Playgrounds, sport fields & beach areas	City of Bridgeport Parks Rules & Regulations - No smoking at playgrounds, sport field & beach areas. Refer to Chapter 12.28 - Park Use Regulations
Darien		X	Citation could be issued, determined by police	Rules & Regulations	Darien Police	Includes: parks & beaches	Town of Darien Parks and Recreation Rules & Regulations - Section 42-R29 - subsection "H": Smoking. No Person shall use, carry or smoke a lighted cigarette, cigar or pipe, anytype of e-cigarette or vaporizer, or other smoking material.
Fairfield		X	Citation could be issued, determined by police	Rules & Regulations: built into Town Ordinance	Fairfield Police	Includes: all beaches, including concession areas	Town of Fairfield Rules & Regulations: Section 11 - subsection "c" - Smoking and vaping is prohibited on all Town beaches, including concession areas
Greenwich		X		Facility Rules		Includes: pool complex and dog park	Greenwich Parks and Recreation, Greenwich Town Pool at Byram Park General Facility Rules (20) - No smoking within the pool complex Greenwich Parks and Recreation, Greenwich Dog Park Rules - No smoking or food of any kind (human or pet) allowed in the dog park
West Haven		X	Citation could be issued, determined by police	Rules & Regulations	West Haven Police	Includes but not limited to: outdoor recreation facilities, playgrounds, athletic field, beaches, beach parking lots	West Haven Rules & Regulations: To protect and enhance outdoor air quality and contribute to the health and well-being of all residents and visitors to City of West Haven owned or controlled outdoor facilities: Smoking will be prohibited at all City-owned outdoor recreational facilities, including playgrounds, athletic fields, beaches, beach parking lots and parks. In all places that smoking is prohibited, electronic smoking is also prohibited
Branford		X		Parks & Recreation Policy	Staff enforced	Including but not limited to: buildings, grounds, entrances, sidewalks, parking lots and beaches	Branford Parks & Recreation Policy: Smoking is prohibited at all properties under the control of the Branford Recreation Department at all times, including but not limited to: buildings, grounds, entrances, sidewalks, parking lots and beaches. Smoking is defined as the use of: cigarettes, pipes, cigars and other devices that produce smoke including electronic cigarettes and water pipes.



Smoking & Tobacco Use

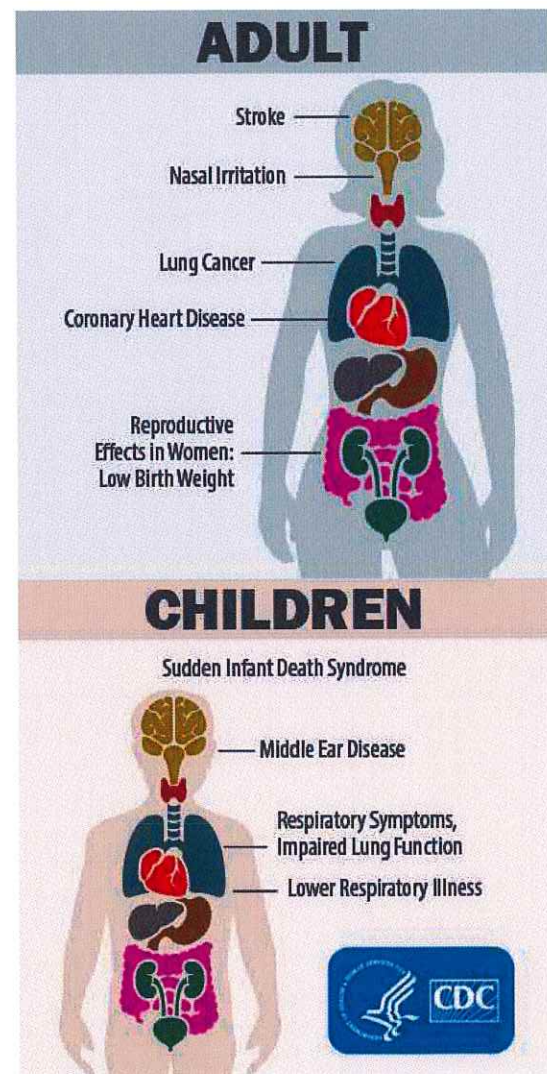
Smoking & Tobacco Use Home

Health Problems Caused by Secondhand Smoke

- There is no safe level of exposure to secondhand smoke (SHS); even brief exposure can cause immediate harm.^{1,2,3}
- Health problems caused by secondhand smoke in adults who do not smoke include coronary heart disease, stroke, and lung cancer, as well as adverse reproductive health effects in women, including low birth weight.^{1,3}
- Secondhand smoke can cause sudden infant death syndrome (SIDS), respiratory infections, ear infections, and asthma attacks in infants and children.¹

What health problems can secondhand smoke cause?

- There is no safe level of exposure to secondhand smoke. People who do not smoke who are exposed to secondhand smoke, even for a short time, can suffer harmful health effects.^{1,2,3}
- In adults who do not smoke, secondhand smoke exposure can cause coronary heart disease, stroke, lung cancer, and other diseases. It can also result in premature death.^{1,2,3}
- Secondhand smoke can cause adverse reproductive health effects in women, including low birth weight.^{1,3}
- In children, secondhand smoke exposure can cause respiratory infections, ear infections, and asthma attacks. In babies, secondhand smoke can cause sudden infant death syndrome (SIDS).^{1,2,3}
- Since 1964, about 2,500,000 people who did not smoke died from health problems caused by secondhand smoke exposure.¹
- The effects of secondhand smoke exposure on the body are immediate.^{1,3} Secondhand smoke exposure can produce harmful inflammatory and respiratory effects within 60 minutes of exposure which can last for at least three hours after exposure.⁴



Health problems caused by secondhand smoke

Heart disease and stroke

Lung cancer



Secondhand smoke causes heart disease and stroke

- For adults who do not smoke, exposure to secondhand smoke has immediate harmful effects on the heart and blood vessels and can cause coronary heart disease and stroke.^{1,3,5}
- Among adults who do not smoke, secondhand smoke causes nearly 34,000 premature deaths from heart disease each year in the U.S.¹
- Adults who do not smoke and are exposed to secondhand smoke increase their risk of developing coronary heart disease by 25–30%.¹
- Adults who do not smoke and are exposed to secondhand smoke increase their risk of stroke by 20–30%.¹
- Exposure to secondhand smoke interferes with the normal functioning of the heart, blood, and vascular systems in ways that increase the risk of having a heart attack.^{1,2,3}
- Even brief exposure to secondhand smoke can damage the lining of blood vessels and cause blood platelets to become stickier. These changes can cause an increased risk of heart attack.^{1,2,3}
- People who already have heart disease are at especially high risk of suffering the harmful effects from breathing secondhand smoke and should take special precautions to avoid even brief exposures.¹



Secondhand smoke causes lung cancer

- Adults who do not smoke and are exposed to secondhand smoke increase their risk of developing lung cancer by 20–30%.^{1,3}
- Secondhand smoke causes more than 7,300 lung cancer deaths each year among U.S. adults who do not smoke.^{1,3}
- People who do not smoke but are exposed to secondhand smoke are inhaling many of the same cancer-causing substances and poisons that are inhaled by people who smoke.^{1,2,3}
- Even brief exposure to secondhand smoke can damage the body's cells in ways that set the cancer process in motion.¹
- As with active smoking, the longer the duration and the higher the level of exposure to secondhand smoke, the greater the risk of developing lung cancer.¹



Secondhand smoke causes reproductive health problems in pregnant people

- Women exposed to secondhand smoke during pregnancy are more likely to have newborns with lower birth weight, increasing the risk of health complications.^{1,2}



Secondhand smoke causes sudden infant death syndrome (SIDS)

- Infants exposed to secondhand smoke after birth are more likely to die from sudden infant death syndrome (SIDS) than infants who are not exposed to smoke from burning commercial tobacco products. ^{1,2,4,5} SIDS is the sudden, unexplained, unexpected death of an infant in the first year of life.
- SIDS is the leading cause of death in otherwise healthy infants. ⁶
- Smoking by women during pregnancy increases the risk for SIDS. ^{1,3,7}
- Chemicals in secondhand smoke appear to affect the brain in ways that interfere with its regulation of infants' breathing. ^{1,3}
- Infants who die from SIDS have higher concentrations of nicotine in their lungs and higher levels of cotinine (a biological marker for secondhand smoke exposure) than infants who die from other causes. ^{1,3}



Secondhand smoke can trigger asthma attacks and cause other health problems in children

- Children who are exposed to secondhand smoke are at an increased risk for acute respiratory infections such as pneumonia and bronchitis, middle ear disease, more frequent and severe asthma, respiratory symptoms, and slowed lung growth. ¹
- Wheezing, coughing, and shortness of breath are more common in children exposed to secondhand smoke. ³
- Children whose parents smoke around them get more ear infections. They also have fluid in their ears more often and have more operations to put in ear tubes for drainage. ³
- Secondhand smoke can trigger an asthma attack in a child. Children with asthma who are around secondhand smoke have more severe and frequent asthma attacks. A severe asthma attack can put a child's life in danger. ³





[More information about protecting children from secondhand smoke](#)

References



1. U.S. Department of Health and Human Services. [The Health Consequences of Smoking—50 Years of Progress: A Report of the Surgeon General](#). Atlanta: U.S. Department of Health and Human Services, Centers for Disease Control and Prevention, National Center for Chronic Disease Prevention and Health Promotion, Office on Smoking and Health, 2014.
2. U.S. Department of Health and Human Services. [A Report of the Surgeon General: How Tobacco Smoke Causes Disease: What It Means to You](#). Atlanta: U.S. Department of Health and Human Services, Centers for Disease Control and Prevention, National Center for Chronic Disease Prevention and Health Promotion, Office on Smoking and Health, 2010.
3. U.S. Department of Health and Human Services. [The Health Consequences of Involuntary Exposure to Tobacco Smoke: A Report of the Surgeon General](#). Atlanta: U.S. Department of Health and Human Services, Centers for Disease Control and Prevention, National Center for Chronic Disease Prevention and Health Promotion, Office on Smoking and Health, 2006.
4. Flouris AD, Koutedakis Y. [Immediate and short-term consequences of secondhand smoke exposure on the respiratory system](#). [Curr Opin Pulm Med](#). 2011;17(2):110-5.

5. Institute of Medicine Committee on Secondhand Smoke Exposure and Acute Coronary Events. [Secondhand Smoke Exposure and Cardiovascular Effects: Making Sense of the Evidence](#)  . Washington, DC: National Academies Press; 2010.
6. American Academy of Pediatrics, Task Force on Sudden Infant Death Syndrome. [The Changing Concept of Sudden Infant Death Syndrome: Diagnostic Coding Shifts; Controversies Regarding the Sleeping Environment; and New Variables to Consider in Reducing Risk](#)  . Pediatrics 2005;116(5):1245–55.
7. U.S. Department of Health and Human Services. [The Health Consequences of Smoking: A Report of the Surgeon General](#). Atlanta: U.S. Department of Health and Human Services, Centers for Disease Control and Prevention, National Center for Chronic Disease Prevention and Health Promotion, Office on Smoking and Health, 2004.

Last Reviewed: November 1, 2022

Tobacco Consumption in Parks

 nrpa.org/our-work/Three-Pillars/tobacco-consumption-in-parks/



Purpose

The purpose of the National Recreation and Park Association (NRPA) Position Statement on Tobacco Consumption in Parks is to encourage all providers of park, recreation and leisure service to maintain healthy, safe and clean environments that are free of tobacco consumption and use, tobacco products, and negative behaviors that may worsen public health. NRPA expressly supports a prohibition on the consumption and use of tobacco products at all park and recreation facilities in order to protect the health of our workforce, visitors and the environment.

Background

Park and recreation agencies are critical stewards of public health — preserving and promoting access to millions of acres of parkland that bring together people of all genders, faiths, ethnicities and abilities to pursue physical activity, healthy lifestyles and leisure experiences. Currently, over 1,266 park and recreation agencies across the country have deemed their facilities tobacco-free. Prohibiting tobacco consumption and use at park and recreation facilities will shield visitors, especially children who are easily influenced by adults, from unhealthy behavior and dangerous exposure to secondhand smoke. Additionally, this prohibition will prevent millions of cigarette butts and filters, most of which never decompose and can harm plants, grass and animals, leech into streams, or cause fires at park and recreation facilities, from being left behind by tobacco users.

Each day, tobacco consumption and use steals time, health, money, energy and life away from 42 million American adults and 3 million middle and high school students. Tobacco is the leading cause of preventable death and disease in the United States and exposes users to immediate and long-term damage. Tobacco kills over 480,000 Americans every year. Secondhand smoke also causes unknown harm to millions of individuals who may be unwittingly exposed. Secondhand smoke has caused 2.5 million deaths since 1964.

Attitudes and opinions about the consumption of tobacco have shifted in recent decades, and scientific research has repeatedly confirmed the danger of tobacco use. As park and recreation agencies seek to improve public health, protect the environment, and uphold public trust, prohibiting the use or consumption of tobacco at our ball fields, recreation centers, parks, splash pads and walking trails will go a long way towards encouraging healthier lifestyles among the families and communities we serve.

The benefits of a tobacco prohibition include:

- Healthier recreational environments that promote physical activity, encourage personal development, and minimize exposure to tobacco use and secondhand smoke.
- Less tobacco use and initiation among child and adult visitors at park and recreation facilities.
- More public awareness about the dangers of tobacco use and secondhand smoke exposure.
- Better health equity and fewer health disparities among visitors to park and recreation facilities.
- Cleaner parks that contribute to a high-quality recreation experience because they are free of tobacco, secondhand smoke and cigarette butts.
- Fewer carcinogens, toxic metals and poisonous gases from secondhand smoke and tobacco products that impact human health, worsen air quality and impair physical activity necessary to fully enjoy park and recreation facilities.
- Fresher air, smoke-free facilities and better respiratory health for all visitors to park and recreation facilities.

Statement of Facts

This document represents NRPA's commitment to reducing the number of people who die from tobacco or tobacco-related illnesses each year or who suffer from tobacco-related diseases by prohibiting the use and consumption of tobacco at park and recreation facilities. As such, the NRPA Position Statement on Tobacco Consumption in Parks contains the following facts, figures, declarations and beliefs:

Tobacco-Free Park and Recreation Facilities

- Park and recreation facilities are designed to encourage healthy behavior, physical activity and social interaction that bring communities and individuals together to enhance their quality of life.
- Devices or objects that encourage and enable tobacco consumption (cigarette receptacles, ash trays, etc.) should be removed from park and recreation facilities.
- Attitudes and beliefs about the dangers of tobacco consumption should be shaped through education and training of all park and recreation stakeholders (staff, volunteers, students and the broader community).

By supporting a prohibition on tobacco consumption at park and recreation facilities, NRPA is dedicated to the following goals:

- Preventing initiation of tobacco use among children, youth and young adults at park and recreation facilities.
- Ending tobacco use among adults visiting park and recreation facilities.
- Ending exposure to secondhand smoke at park and recreation facilities.
- Eliminating tobacco-related disparities among the communities and individuals we serve.
- Improving quality of life at park and recreation facilities.
- Stopping environmental degradation at park and recreation facilities caused by cigarette butts and filters.



Marijuana and Public Health

Secondhand Marijuana Smoke

The known risks of secondhand exposure to tobacco smoke—including risks to the heart and lungs¹—raise questions about whether secondhand exposure to marijuana smoke causes similar health risks. Secondhand marijuana smoke contains many of the same toxic and cancer-causing chemicals found in tobacco smoke and contains some of those chemicals in higher amounts.²

Secondhand marijuana smoke also contains tetrahydrocannabinol (THC), the compound responsible for most of marijuana's psychoactive effects (or the "high"). THC can be passed to infants and children through secondhand smoke, and people exposed to secondhand marijuana smoke can experience psychoactive effects, such as feeling high.^{3,4} Recent studies have found strong associations between reports of having someone in the home who uses marijuana (e.g., a parent, relative, or caretaker) and the child having detectable levels of THC.^{5,6} Children exposed to THC are potentially at risk for negative health effects. More research is needed to understand how secondhand marijuana exposure may affect children. Other research shows that marijuana use during adolescence can impact the developing teenage brain and cause problems with attention, motivation, and memory.⁶ To learn more about the long-term effects of marijuana use, please visit the [health effects section](#).

More research about the effects of marijuana secondhand smoke is still needed.

Learn More

[What You Should Know About Using Cannabis, Including CBD, When Pregnant or Breastfeeding | FDA](#)

References

1. Alberg AJ, Shopland DR, Cummings KM. The 2014 Surgeon General's report: commemorating the 50th Anniversary of the 1964 Report of the Advisory Committee to the US Surgeon General and updating the evidence on the health consequences of cigarette smoking . *American Journal of Epidemiology*. 2014;179(4):403-412.
2. Moir D, Rickert WS, Levasseur G, et al. A comparison of mainstream and sidestream marijuana and tobacco cigarette smoke produced under two machine smoking conditions. *Chemical Research in Toxicology*. 2008;21(2):494-502.
3. Taylor DR, Poulton R, Moffitt TE, Ramankutty P, Sears MR. The respiratory effects of cannabis dependence in young adults. *Addiction*. 2000;95(11):1669-1677.
4. Wilson KM, Torok MR, Wei B, et al. Detecting biomarkers of secondhand marijuana smoke in young children. *Pediatric Research*. 2017;81(4):589-592.
5. Moore C, Coulter C, Uges D, et al. Cannabinoids in oral fluid following passive exposure to marijuana smoke. *Forensic Science International*. 2011;212(1-3):227-230.
6. Broyd SJ, van Hell HH, Beale C, Yuecel M, Solowij N. Acute and chronic effects of cannabinoids on human cognition—a systematic review. *Biological Psychiatry*. 2016;79(7):557-567.

Page last reviewed: October 19, 2020



Secondhand Marijuana Smoke

"Smoke is smoke. Both tobacco and marijuana smoke impair blood vessel function similarly. People should avoid both, and governments who are protecting people against secondhand smoke exposure should include marijuana in those rules."

-Matthew Springer, cardiovascular researcher and Associate Professor of Medicine, University of California, San Francisco

Facts about secondhand marijuana smoke:

- Marijuana smoke is created by burning components of plants in the genus Cannabis.
- Secondhand marijuana smoke is a complex chemical mixture of smoke emitted from combusted marijuana and the smoke that is exhaled by the user.
- Secondhand marijuana smoke contains fine particulate matter that can be breathed deeply into the lungs.
- Secondhand marijuana smoke contains many of the same cancer-causing substances and toxic chemicals as secondhand tobacco smoke. Some of the known carcinogens or toxins present in marijuana smoke include: acetaldehyde, ammonia, arsenic, benzene, cadmium, chromium, formaldehyde, hydrogen cyanide, isoprene, lead, mercury, nickel, and quinoline.ⁱ
- Marijuana smoke contains tetrahydrocannabinol (THC), the active chemical in cannabis.

Health risks of exposure to secondhand marijuana smoke:

Decades ago, people believed secondhand tobacco smoke presented no health risks to nonsmokers. Scientific research since that time changed this perception and led to smoke-free environments. Likewise, scientific research is demonstrating that breathing secondhand marijuana smoke indoors is dangerous to health and therefore should not be allowed in indoor spaces.

Peer-reviewed and published studies do indicate that exposure to secondhand marijuana smoke may have health and safety risks for the general public, especially due to its similar composition to secondhand tobacco smoke.

- Secondhand smoke from combusted marijuana contains fine particulate matter that can be breathed deeply into the lungs,ⁱⁱ which can cause lung irritation, asthma attacks, and makes respiratory infections more likely. Exposure to fine particulate matter can exacerbate health problems especially for people with respiratory conditions like asthma, bronchitis, or COPD.ⁱⁱⁱ
- Particulate levels from secondhand marijuana smoke are even higher than particulate levels from secondhand tobacco smoke. A study comparing indoor particulate matter 2.5 (PM2.5) levels from secondhand marijuana smoke and secondhand tobacco smoke concluded that "the average PM2.5 emission rate of the pre-rolled marijuana joints was found to be 3.5 times the average emission rate of Marlboro tobacco cigarettes, the most popular US cigarette brand." **Smoking a marijuana joint indoors can produce extremely high indoor PM2.5 concentrations**, thereby exposing the public and workers to dangerous secondhand marijuana smoke emissions.^{iv}

- Being near people who are using inhaled cannabis is hazardous to human health. In a dispensary that allowed marijuana/cannabis smoking, research scientists discovered that the average PM2.5 emissions was 840 ug/m3 over 9 visits, which exposed patrons and workers to air pollutant concentrations that are beyond hazardous levels.^v
- On-site consumption of cannabis using electric vaporizers, vape pens, and dab rigs produces a chemical aerosol that pollutes indoor air to unhealthy levels. This diminished air quality was observed when marijuana was not being combusted on-site. Researchers measured high levels of PM2.5 inside a marijuana retailer that allowed vaporizing, dabbing, and vaping marijuana - but did not allow smoking of marijuana or tobacco.^{vi}
- Researchers at the University of California at Berkeley studying fine particulate matter exposure found that cannabis bong smoking in the home generated **4 times greater PM2.5 concentrations** than cigarette or tobacco hookah (waterpipe) smoking.^{vii}
- In the first “whole-house” study of its kind, researchers measured both tobacco and marijuana secondhand smoke and found that PM2.5 concentrations from marijuana secondhand smoke were 4.4 times higher than emissions from secondhand tobacco smoke. Secondhand marijuana levels were higher than tobacco levels in every room of the house.^{viii}
- Significant amounts of mercury, cadmium, nickel, lead, hydrogen cyanide, and chromium, as well as 3 times the amount of ammonia, are found in mainstream marijuana smoke than is in tobacco smoke.^{ix}
- In 2009, the California Office of Environmental Health Hazard Assessment added marijuana smoke to its Proposition 65 list of carcinogens and reproductive toxins, also known as the Safe Drinking Water and Toxic Enforcement Act of 1986. It reported that at least 33 individual constituents present in both marijuana smoke and tobacco smoke are Proposition 65 carcinogens.^{x, xi}
- Secondhand smoke from marijuana has many of the same chemicals as smoke from tobacco, including those linked to lung cancer.^{xii}
- Secondhand marijuana exposure impairs blood vessel function. Published studies on rats show that thirty minutes of exposure to secondhand marijuana smoke at levels comparable to those found in restaurants that allow cigarette smoking led to substantial impairment of blood vessel function. Marijuana smoke exposure had a greater and longer-lasting effect on blood vessel function than exposure to secondhand tobacco smoke.^{xiii}
- One minute of exposure to marijuana SHS substantially impairs endothelial function in rats for at least 90 minutes, considerably longer than comparable impairment by tobacco SHS. The findings in rats suggest that SHS can exert similar adverse cardiovascular effects regardless of whether it is from tobacco or marijuana.^{xiv}
- Secondhand marijuana smoke and secondhand tobacco smoke is similar in many ways. More research is needed, but the current body of science shows that both tobacco and marijuana smoke have similar chemical composition and suggests that they may have harmful cardiovascular health effects, such as atherosclerosis (partially blocked arteries), heart attack, and stroke.^{xv}
- Particle concentrations from dabbing and vaporizing cannabis can create levels of indoor air pollution similar as those seen in extreme air pollution events like wildfires and severe industrial pollution. Exposure at these concentrations can cause cardiovascular and respiratory disease.^{xvi}

- People who are exposed to secondhand marijuana smoke can have detectable levels of THC (tetrahydrocannabinol) in their blood and urine.^{xvii}
- Marijuana also can be contaminated with mold, insecticides or other chemicals that may be released in secondhand smoke.^{xviii}

Including Marijuana Smoking in Smokefree Public Place and Workplace Laws:

- Everyone has the right to breathe smokefree air. Smokefree policies are designed to protect the public and all workers from exposure to the health hazards caused by exposure to secondhand tobacco smoke. The same should be true for secondhand marijuana smoke.
- The percent of U.S. adults who use marijuana more than doubled from 4.1% to 9.5% between 2001-2002 and 2012-2013,^{xix} which may also indicate an increase in exposure to secondhand marijuana smoke.
- The American Society for Heating, Refrigeration, and Air Conditioning Engineering (ASHRAE) is the organization that develops engineering standards for building ventilation systems. ASHRAE now bases its ventilation standard for acceptable indoor air quality on an environment that is completely free from secondhand tobacco smoke, secondhand marijuana smoke, and emissions from electronic smoking devices.^{xx}
- To protect public health, improve consistency, and aid enforcement, smokefree laws for public places and workplaces should include tobacco as well as marijuana, whether it is smoked or aerosolized. Allowing marijuana smoking in places where smoking is now prohibited could undermine laws that protect the public from exposure to secondhand smoke. The Tobacco Control Legal Consortium issued an informative brief on [Lessons from Tobacco Control for Marijuana Regulation](#).^{xxi}
- Smokefree policies provide incentives to quit smoking, help denormalize smoking behavior, and are particularly effective among youth and young adults who are vulnerable to visual cues and social norms of smoking. It is likely that smokefree policies for marijuana will have a similar effect.
- As of April 1, 2023, 928 localities and 39 states/territories/commonwealths restrict marijuana use in some or all smokefree spaces. Of these, 504 localities and 22 states/territories/commonwealths prohibit smoking and vaping of recreational and medical marijuana in one or more of the following venues: non-hospitality workplaces, restaurants, bars, and/or gambling facilities.

Maintaining the Smokefree Gain from Industry Interference:

- The tobacco industry is setting its sights on the commercialization of marijuana and pushing for on-site consumption to once again normalize smoking and vaping in public, undermining decades of smokefree protections. Creating transparency about the relationships between the cannabis industry, related industries, and policymakers is essential to ensure appropriate regulation of cannabis products.
- An observational study found that nearly **half of lobbyists did not disclose that they represented the cannabis industry or interests**, which makes it difficult for people to track the industry's activity and spending. As the study notes, "The cannabis industry has an interest in

creating a regulatory environment which maximizes profits at the cost of public health, similar to the tobacco, alcohol, and food industries.” It is imperative for public health advocates to educate policymakers and the public about the cannabis industry’s well-funded lobbying activities that aim to promote their profits over the public’s wellbeing.

In the interest of public health, the use of combustible or aerosolized marijuana should be prohibited wherever tobacco smoking is prohibited.

ANR Foundation’s Position on Exposure to Secondhand Marijuana Smoke:

Marijuana smoke is a form of indoor air pollution. Therefore, ANR, our lobbying organization, includes marijuana within the definition of smoking, and all of our model laws and policies include a prohibition on smoking marijuana wherever smoking of tobacco products is not allowed. Our organization does not have a position on whether marijuana should be legalized; we are committed to smokefree protections from secondhand smoke from tobacco products, marijuana and aerosol from electronic smoking devices.

Nobody should have to breathe secondhand marijuana smoke at work, in public, or where they live. We want healthy, smokefree air for workers and the public, products like marijuana and electronic smoking devices (which can be used to “vape” a wide range of substances, including marijuana and hash oil) must not be used in smokefree environments where others are forced to breathe the secondhand emissions.

References

-
- ⁱ Moir, D., et al., A comparison of mainstream and sidestream marijuana and tobacco cigarette smoke produced under two machine smoking conditions. *Chem Res Toxicol* 21: 494-502. (2008). <http://www.ncbi.nlm.nih.gov/pubmed/18062674>
- ⁱⁱ Hillier, FC.; et al. "Concentration and particle size distribution in smoke from marijuana cigarettes with different Δ^9 -tetrahydrocannabinol content." *Fundamental and Applied Toxicology*. Volume 4, Issue 3, Part 1, June 1984, Pages 451-454. <http://www.sciencedirect.com/science/article/pii/0272059084902021>
- ⁱⁱⁱ "Air and Health: Particulate Matter." National Environmental Public Health Tracking Network, U. S. Environmental Protection Agency. <http://ephtracking.cdc.gov/showAirHealth.action#ParticulateMatter>
- ^{iv} Ott, W., et al., Measuring indoor fine particle concentrations, emission rates, and decay rates from cannabis use in a residence, *Atmospheric Environment: X*, Volume 10, 2021, 100106, ISSN 2590-1621, <https://doi.org/10.1016/j.aeaoa.2021.100106>. (<https://www.sciencedirect.com/science/article/pii/S259016212100006X>)
- ^v PM2.5 Concentrations in the Smoking Lounge of a Cannabis Store, Huang, Murphy, Jacob and Schick, *Environ. Sci. Technol. Lett.* 2022, 9, 6, 551–556, Publication Date: May 26, 2022, <https://doi.org/10.1021/acs.estlett.2c00148>, Copyright © 2022 American Chemical Society
- ^{vi} Murphy, M.B.; Huang, A.S.; Schick, S.F., "[PM2.5 concentrations in a cannabis store with on-site consumption](#)," *Environmental Health Perspectives* 129(6), June 16, 2021.
- ^{vii} Nguyen, Patton Khuu, MPH; Hammond, S. Katharine, PhD, Fine Particulate Matter Exposure From Secondhand Cannabis Bong Smoking (2022) [doi:10.1001/jamanetworkopen.2022.4744](https://doi.org/10.1001/jamanetworkopen.2022.4744).
- ^{viii} Ott, W.R., Wallace, L.A., Cheng, K-C, and Hildemann, L.M., "Measuring PM2.5 concentrations from secondhand tobacco vs. marijuana smoke in 9 rooms of a detached 2-story house," *Science of the Total Environment* 852 (2022) 158244.
- ^{ix} Moir, D., et al., A comparison of mainstream and sidestream marijuana and tobacco cigarette smoke produced under two machine smoking conditions. *Chem Res Toxicol* 21: 494-502. (2008). <http://www.ncbi.nlm.nih.gov/pubmed/18062674>
- ^x "Evidence on the Carcinogenicity of Marijuana Smoke." Reproductive and Cancer Hazard Assessment Branch, Office of Environmental Health Hazard Assessment, California Environmental Protection Agency. August 2009. http://oehha.ca.gov/prop65/hazard_ident/pdf_zip/FinalMJsSmokeHID.pdf
- ^{xi} Wang, X., et al., "Brief exposure to marijuana secondhand smoke impairs vascular endothelial function" (conference abstract). *Circulation* 2014; 130: A19538. http://circ.ahajournals.org/content/130/Suppl_2/A19538.abstract

-
- ^{xii} “Evidence on the Carcinogenicity of Marijuana Smoke.” Reproductive and Cancer Hazard Assessment Branch, Office of Environmental Health Hazard Assessment, California Environmental Protection Agency. August 2009.
http://oehha.ca.gov/prop65/hazard_ident/pdf_zip/FinalMJsmokeHID.pdf
- ^{xiii} Wang, X., et al., “Brief exposure to marijuana secondhand smoke impairs vascular endothelial function” (conference abstract). *Circulation* 2014; 130: A19538. http://circ.ahajournals.org/content/130/Suppl_2/A19538.abstract
- ^{xiv} Wang, X.; Derakhshandeh, R.; Liu, J.; Narayan, S.; Nabavizadeh, P.; Le, S.; Danforth, O.M.; Pinnamaneni, K.; Rodriguez, H.J.; Luu, E.; Sievers, R.E.; Schick, S.F.; Glantz, S.A.; Springer, M.L., “One minute of marijuana secondhand smoke exposure substantially impairs vascular endothelial function,” *Journal of the American Heart Association* 5(8): e003858, August 2016.
<https://www.ncbi.nlm.nih.gov/pmc/articles/PMC5015303/>
- ^{xv} Springer, M.L.; Glantz, S.A. "Marijuana Use and Heart Disease: Potential Effects of Public Exposure to Smoke," University of California at San Francisco. April 13, 2015.
<https://tobacco.ucsf.edu/sites/g/files/tksra4661f/u9/MSHS%20fact%20sheet%20for%20CA%204-13-15.pdf>
- ^{xvi} Jaques, P, Zalay, M, Huang, A, Jee, K, Schick, SF “Measuring Aerosol Particle Emissions from Cannabis Vaporization and Dabbing”, Proceedings of the 15th Meeting of the International Society for Indoor Air Quality and Climate. July 22-27, 2018. Philadelphia, PA.
- ^{xvii} Herrmann ES, et al., “Non-smoker exposure to secondhand cannabis smoke II: Effect of room ventilation on the physiological, subjective, and behavioral/cognitive effects.” *Drug and Alcohol Dependence*. 2015 Jun 1;151:194-202.
<http://www.ncbi.nlm.nih.gov/pubmed/25957157>
- ^{xviii} UC Davis Researchers, research letter published online in the journal of Clinical Microbiology and Infection, “A microbiome assessment of medical marijuana” April 2017 Volume 23, Issue 4, Pages 269–270
[https://www.clinicalmicrobiologyandinfection.com/article/S1198-743X\(16\)30605-X/pdf](https://www.clinicalmicrobiologyandinfection.com/article/S1198-743X(16)30605-X/pdf)
- ^{xix} Hasin DS, et al. “Prevalence of Marijuana Use Disorders in the United States Between 2001-2002 and 2012-2013.” *JAMA Psychiatry*. Published online October 21, 2015. <http://archpsyc.jamanetwork.com/article.aspx?articleid=2464591>
- ^{xx} ANSI/ASHRAE Standard 62.1-2016 – Ventilation for Acceptable Indoor Air Quality. Atlanta, GA: American Society of Heating, Refrigerating, and Air-Conditioning Engineers, Inc.
<https://www.ashrae.org/technical-resources/standards-and-guidelines/read-only-versions-of-ashrae-standards>
- ^{xxi} Cork, Kerry. "Toking, Smoking & Public Health: Lessons from Tobacco Control for Marijuana Regulation." Tobacco Control Legal Consortium. June 2015. http://www.publichealthlawcenter.org/sites/default/files/resources/tclc-synopsis-marijuana-tobacco-2015_0.pdf

For more information, visit <https://nonsmokersrights.org/marijuana-smoke> or call us at 510-841-3032.

May be reprinted with appropriate attribution to the American Nonsmokers' Rights Foundation, © 2023

Parks and Recreation Commission

Meeting Date: May 17, 2023

Agenda Item: #6

Longshore Capital Improvement Plan final report (Discussion only)

Background Information:

Stantec's process to create the Longshore Capital Improvement Plan began in January 2022 and culminated with the vote on March 15, 2023, by the Parks and Recreation Commission to adopt the plan. Stantec has compiled relevant data from the process into a final report.

Back-up Documents:

Longshore Club Park Capital Improvement Plan 2023 – Final Report

Staff Recommendation:

N/A

Resolution Format:

N/A

Longshore Club Park Capital Improvement Plan 2023 Final Report

Prepared for:
Town of Westport Parks and
Recreation Commission

Prepared by:
Stantec, New Haven, CT

May 17, 2023



Dear Friends:

This is the Longshore Capital Improvement Plan (“LCIP”) for Longshore Club Park in Westport, CT. The plan was approved by the Parks and Recreation Commission on March 15, 2023, and the final report was adopted on May 17, 2023.

The LCIP is a planning document meant to guide the Town through capital improvements of Longshore Club Park over the next ten years. This plan incorporates many key priorities of the community while maintaining Longshore’s charm and open feel. The LCIP: (1) improves and enhances existing recreational and social facilities while adding new ones, (2) creates open views to the water while enhancing pedestrian paths not in conflict with the golf course, (3) creates a shoreline walk, and (4) improves traffic flow and parking accessibility.

The improvements outlined herein will be commenced and completed on a project-by-project basis and will follow all capital improvement processes. We look forward to making these improvements over the next ten years which will enhance Longshore for generations to come.

Sincerely,

Dave Floyd

Dave Floyd, Chair

Parks and Recreation Commission



Table of Contents

- Acknowledgements
- Purpose of the Plan
- Community Engagement
- Existing Park Features and Conditions
- Park Improvement Program
- Recommendations
- 10-Year Capital Improvement Plan
- Appendix (see Page 4)

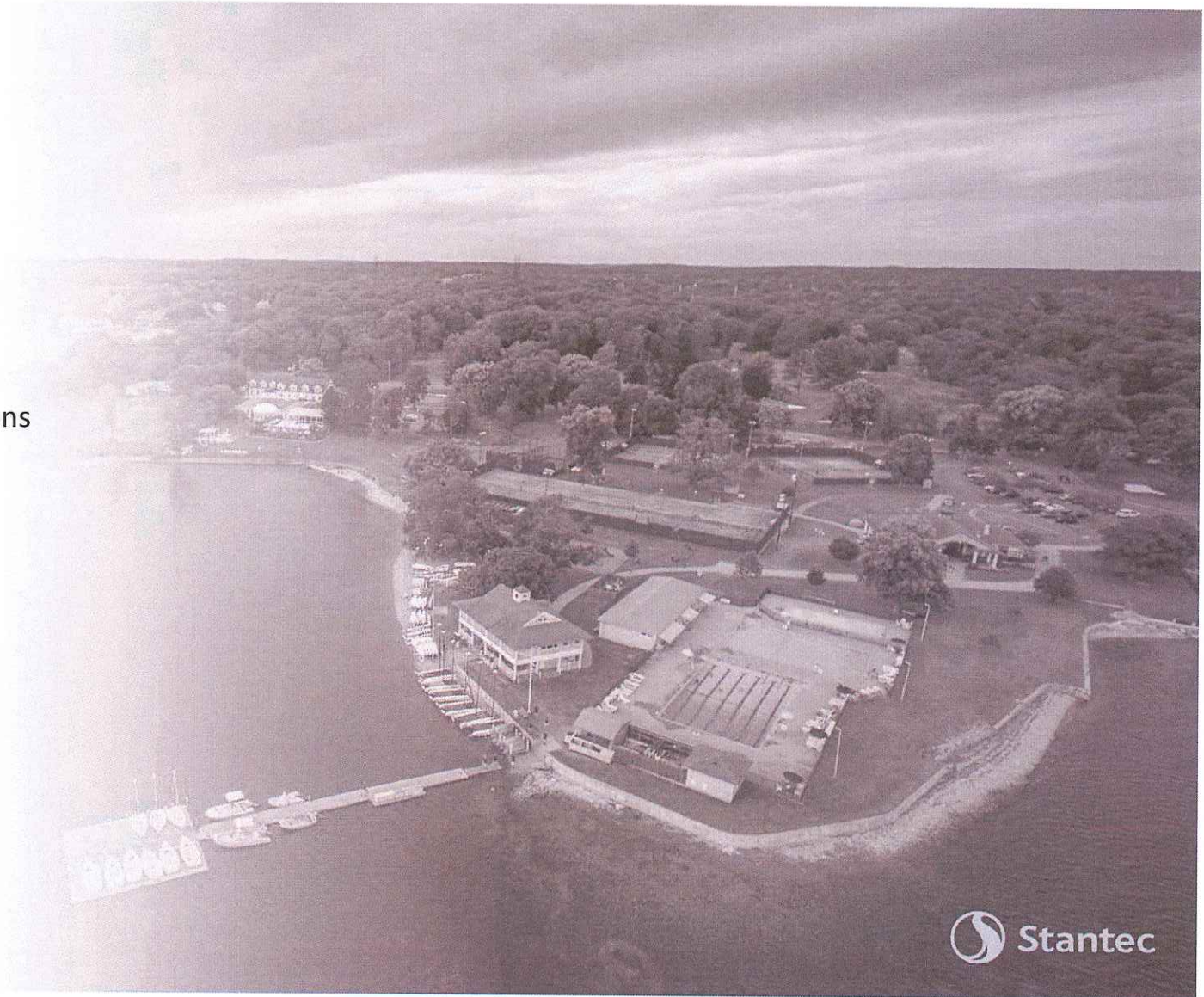


Table of Contents

Appendix

(provided under separate cover)

Longshore Club Park Capital Improvement Plan
Stakeholder Engagement and Resident Survey
Summary
July 20, 2022

Longshore Club Park
Capital Improvement Plan | Preliminary Concept Diagrams
October 19, 2022

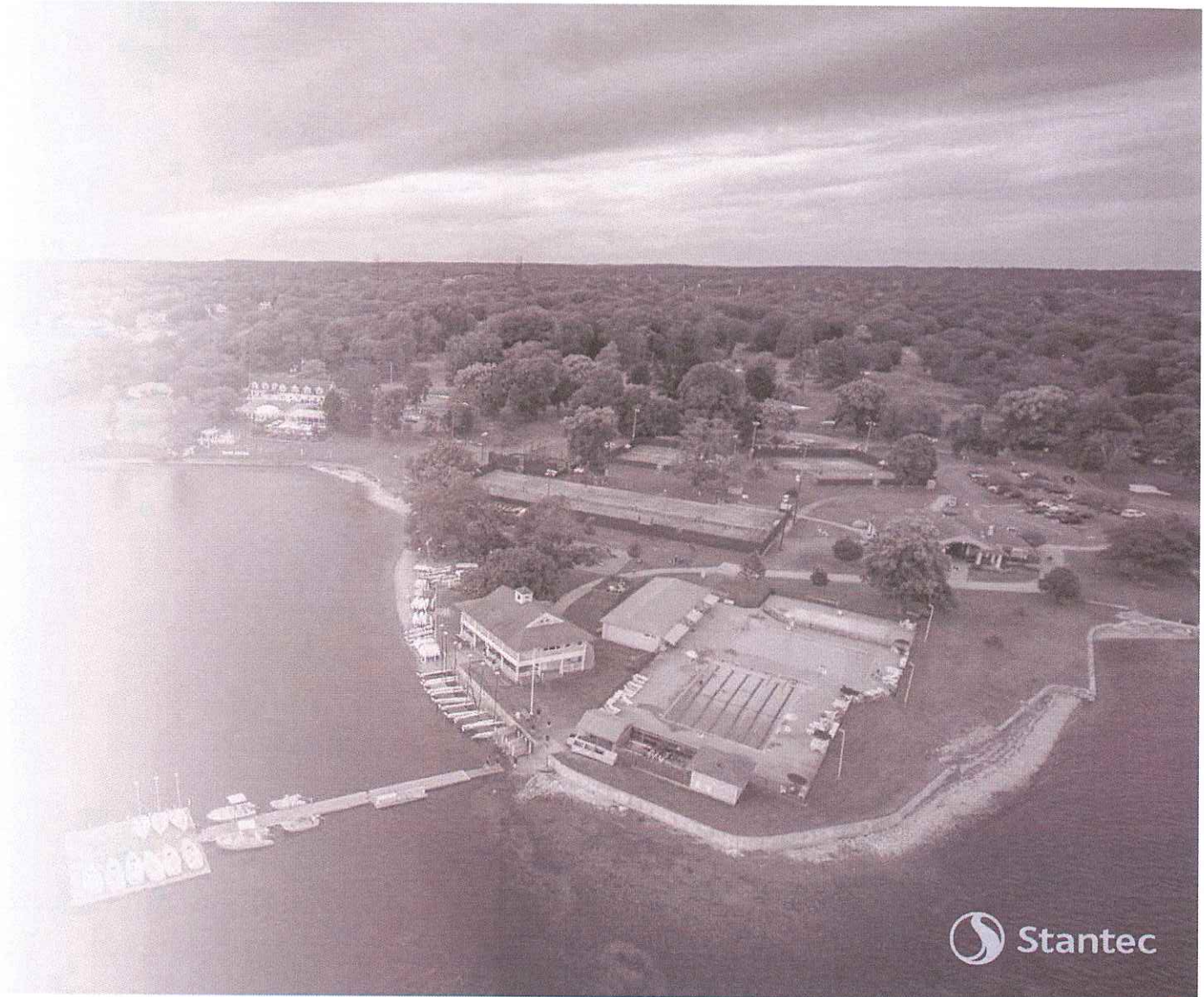
Longshore Club Park
Preliminary Capital Improvement Plan
October 19, 2022

Longshore Club Park
Capital Improvement Plan | Preliminary Concept Diagrams
Open House and Public Survey Results
December 7, 2022

Longshore Club Park
Capital Improvement Plan
January 11, 2023

Longshore Club Park
Capital Improvement Plan
March 2, 2023

Longshore Club Park
Capital Improvement Plan
March 15, 2023



Acknowledgements

The Town of Westport and Stantec Consulting Services Inc. recognize these organizations and individuals for participating in the preparation of the 2023 Longshore Club Park Capital Improvement Plan. Thank you to the residents of Westport for your participation and dedication to the future of the Park.

First Selectwoman

Jennifer S. Tooker

Stakeholders

Racquets Advisory Committee

Golf Advisory Committee

Longshore Golf Associations (Women's 9 & 18, and Men's)

Police Athletic League (The Rink)

E.R. Strait Marina Representatives

Longshore Sailing School

The Inn at Longshore

Longshore Club Park Golf Professional

Brightview Golf Maintenance

Parks and Recreation Commission

David Floyd, Chair

Elaine Whitney

Matthew Haynes

Chrissy O'Keefe

Alec Stevens

Parks and Recreation

Jennifer Fava, Director

Administration:

Rick Giunta

Barb Vornkahl

Michael Giunta

Cyndi Palaia

Wendy Latham

Max Robbins

Claudia Wildstein

Parks Facilities:

Michael West

Daryl Nistico

Drew Grega

Jim Deegan

Chris Rosenfield

Jose (Cheebo) Soto

Joseph Kennedy

Chris Hedlund

David Wilcox

Ed Frawley

Nick Rosa

Adam Marks

Department of Public Works

Peter Ratkewich, Director

John Broadbin

Michael Frawley

Planning and Zoning Department

Mary Young, Director

Conservation Department

Alicia Mozian, former Director

Colin Kelly, Director

Longshore Racquets Advisory Committee

David Ascelrod, Chair

Beth Jaykus

David Kaplan

Denise Thomas

Lloyd Clareman

Patti Brill

Ward Doonan

Golf Advisory Committee

Jane Dally, Chair

John Ehli

Judy Domkowski

Michael Durkin

Richard Raphael

Irla Landry

Longshore Golf Associations

Cynthia Carpenter

Marie Gross

Anne Haymon

Peter Krieger

Ryan Smith

Golf Professional and Course Maintenance

Jon Janik

Vince Gilmartin

Brad Brown

Longshore Sailing School

Jane Pimentel

PAL Skate Rink

Bob Wickey

Sam Arciola

ER Strait Marina

Bob Iannacone

Sam Arciola

The Inn at Longshore

Michael Ryan

Adam Cassidy

Stantec Consulting Services Inc.

Gary Sorge, FASLA, AICP, ENV SP

Travis Ewen, RLA, WEDG

Christopher Hampton, Designer



Longshore Club Park Capital Improvement Plan 2023

Purpose

The Town of Westport engaged Stantec to complete this Longshore Club Park Capital Improvement Plan to provide a vision and plan of execution for improvements to the park. This plan is a needs, spatial and cost analysis to enhance the configuration and function of the various uses within the park.

The purpose of this plan is to make improvements for the immediate, short, and long-term functionality, sustainability, and enjoyment of Longshore Club Park to the entire Westport community. This is a once in a lifetime opportunity to make improvements to connectivity, pedestrian and vehicular circulation, safety, accessibility, aesthetics, capacity, ease of use, and recreation opportunities for an increasingly diverse population of park enthusiasts.

Longshore Club Park Capital Improvement Plan 2023

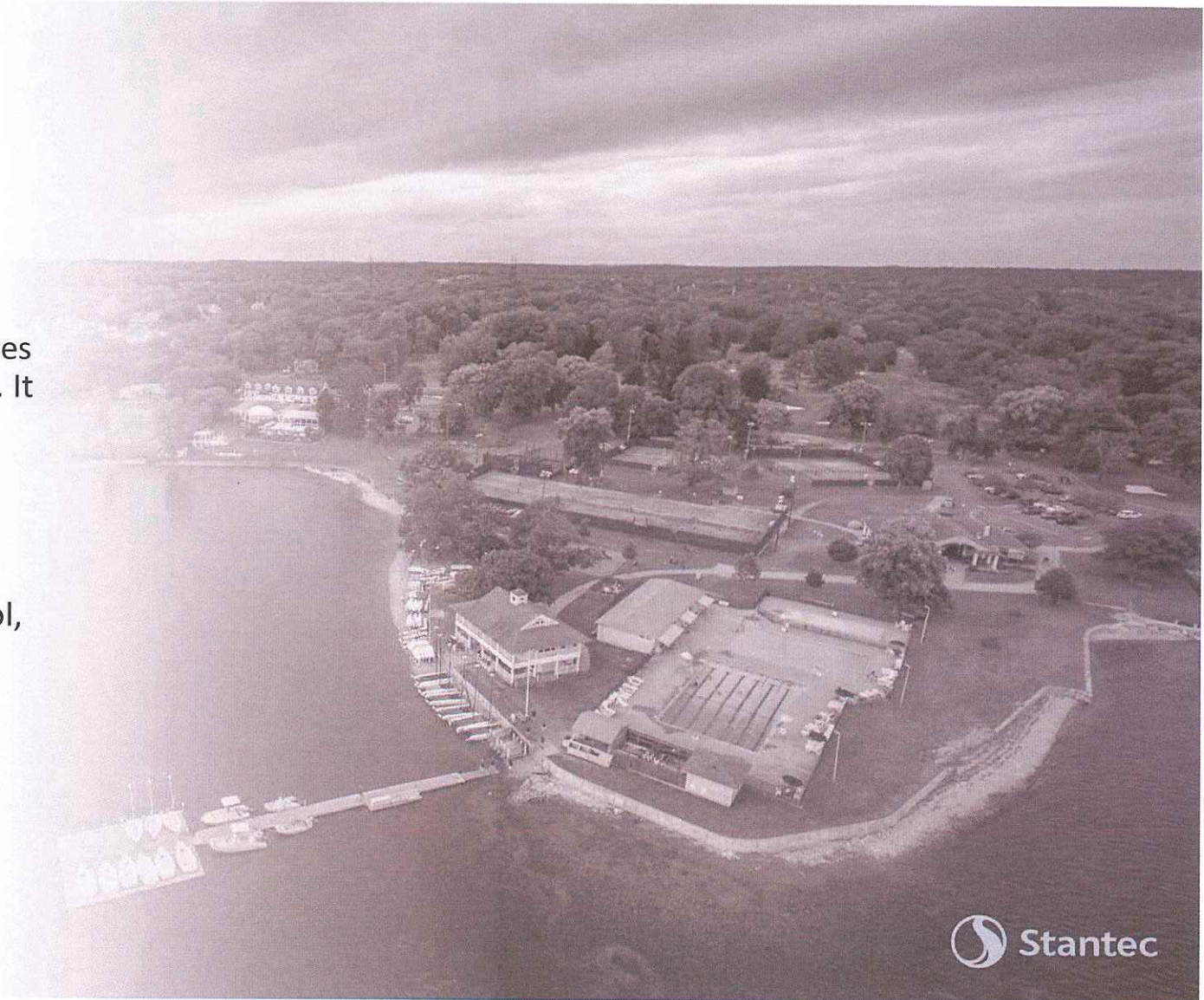
Community Engagement

Parks & Recreation began preliminary discussions with Stantec related to the Longshore Capital Improvement Plan in January 2022. Stakeholder meetings were held in March and April 2022 with a total of 14 participating user groups and Town departments. A community wide on-line survey was conducted in late May through mid-June 2022 to garner initial input for the plan. The results of the survey are illustrated on the following pages. Following preparation of a preliminary park improvement program and illustrative diagrams, five (5) open house sessions were held at the Westport Library in late October 2022 to review initial concept plans (in addition to a Parks and Recreation Commission meeting). A second survey was conducted to garner feedback on the initial concept plans.

Preparation of the Longshore Capital Improvement Plan included seven (7) meetings of the Parks and Recreation Commission. The plan culminated with the Westport Parks and Recreation Commission's approval of this Capital Improvement Plan on March 15, 2023.

Existing Park Features and Conditions

Longshore Club Park sits on 168-acres on the coast of the Saugatuck River. It features an 18-hole golf course, a driving range, Parks and Recreation offices and facilities, The Inn at Longshore, tennis and platform tennis courts, a winter ice rink, a marina, the Longshore Sailing school, and seating areas overlooking the Long Island Sound and coastline.



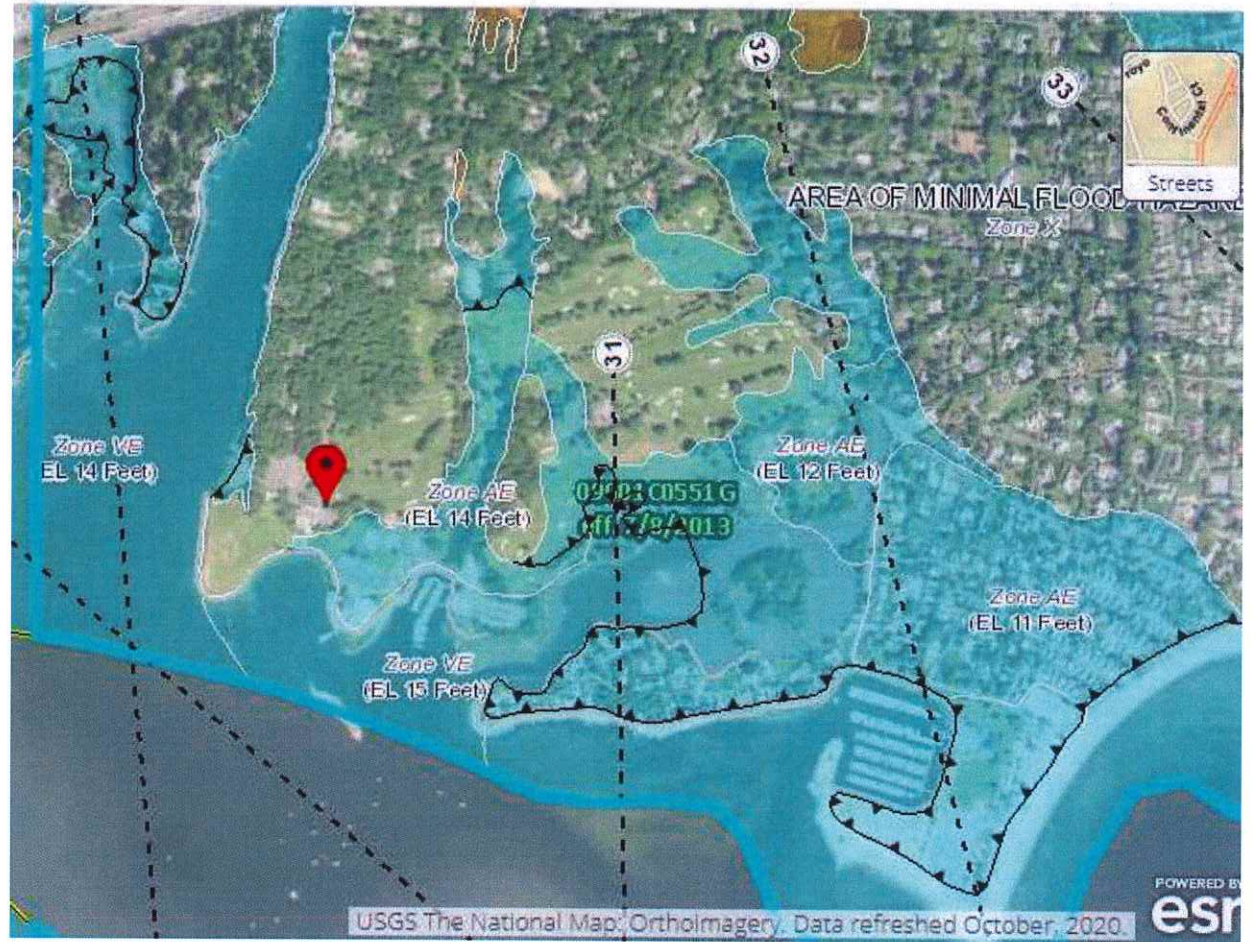
Existing Park Features and Conditions



Existing Park Features and Conditions

A portion of the park is located within a FEMA designated flood zone. Specific regulations apply when considering new work in the park, particularly within the Zone AE limits shown in this illustration.

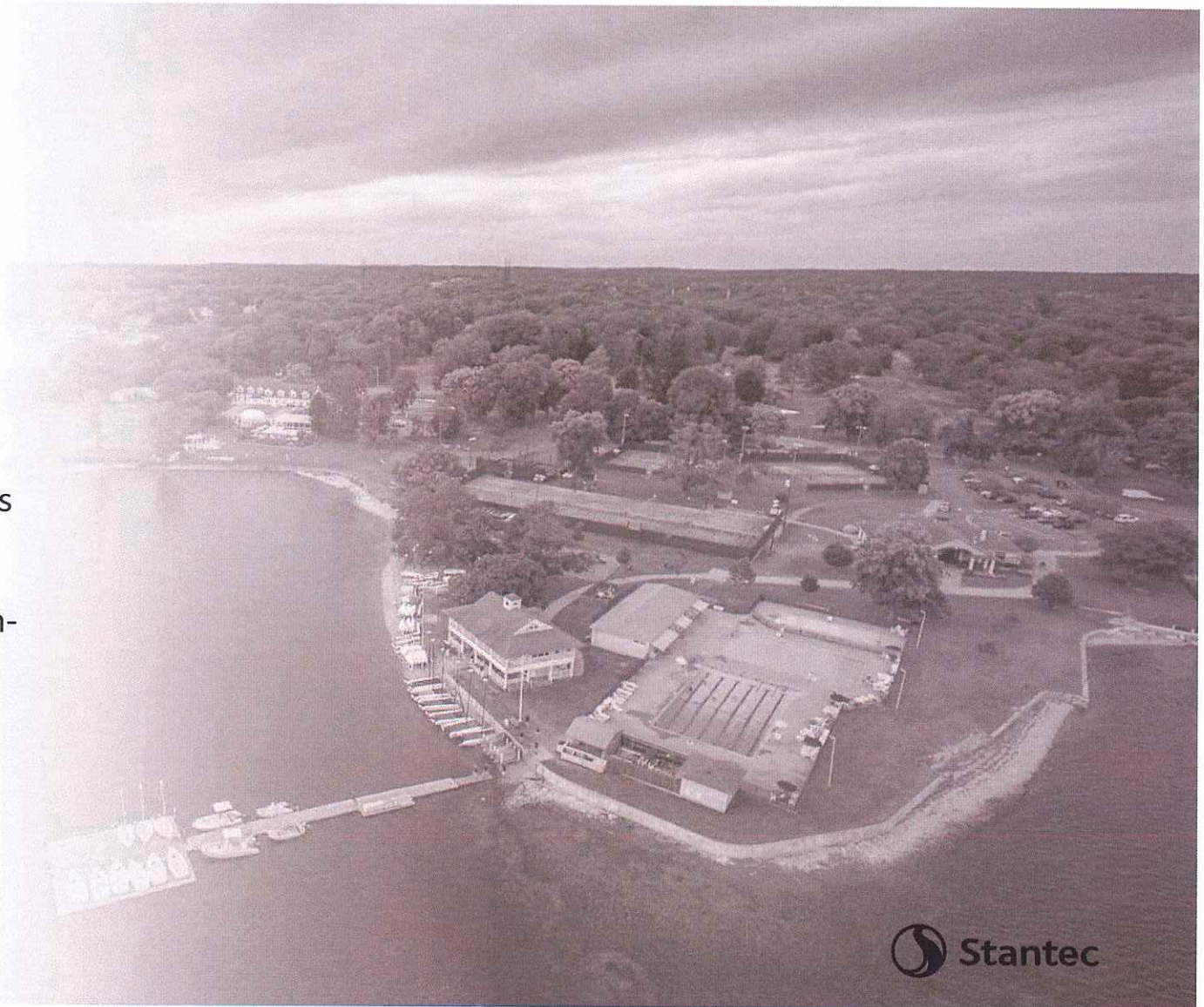
Map Source: USGS (2020)



Longshore Club Park Capital Improvement Plan

Park Improvement Program

The Program evolved from a series of stakeholder, town staff, public, and Parks and Recreation Commission meetings plus two on-line community surveys. Park improvement priorities are summarized on pages 12 and 13.



What is your favorite aspect of the park?

In the initial survey of town residents and park patrons, 1741 of the 2,600 respondents shared their favorite aspect of Longshore Club Park. Written responses by residents expressed their interest in both existing and new park features, illustrated here in this summary.

Features and activities such as water views, the golf course, tennis, walking, the pool, sailing, and restaurant are popular with residents, in addition to other passive recreation opportunities.



Park Improvement Program | Priorities



Priority	Remarks
Maintain and provide open views to water	Reduce visual clutter and locate amenities to create enhanced view corridors.
Expand and improve court sports	Expand platform tennis. Provide pickleball courts. Upgrade tennis courts 1-9 and realign courts 6-9.
Enhance pedestrian paths, and provide a shoreline walk	Provide attractive and safe connections between amenities. Avoid conflicts with golf course. Provide coastal access where feasible.
Improve park road intersections	Prioritize Zone 4, near Inn and Clubhouse. Enhance intersection/interior gateway in Zone 2.
Provide passive recreation amenities	Provide accessible recreation path loops. Enhance picnic areas near pool and at Evan Harding Point.
Enhance and/or relocate playground	Modernize playground with more inclusive play adjacent to the pool complex.
Provide interim shade amenities at pool	See Pool, below.
New golf clubhouse	Provide golf pro shop, grill room, outdoor patio, fitting area, restrooms, and cart barn.
Improve the golf practice facility	Maintain range and consider options for future modifications/modernization to the facility that allows for passive recreation access (pathway and seating) to the shoreline.
Provide pickleball courts w/ pavilion	Six (6) courts in Zone 3. Utilize existing infrastructure, provide restroom, and add parking.
Additional platform tennis courts and hut	Remove existing courts. Provide 4 new courts in a new location, with a warming hut.
Sailing School restrooms	Append existing pool building. See pool, below.
Relocate park maintenance facility	Relocate to brush pile area, if feasible.
Remove the brush pile and repurpose space	See park maintenance facility, above.
Upgrade water service to park core	Required to complete previous water distribution upgrades and support current and future uses.
Upgrade fueling facilities (2 locations)	Implement upgrades at the marina and golf maintenance facility locations.
Improve Parking Lot F	Rehabilitate with pervious surface treatment and expanded capacity to support Zone 4 and Zone 5 uses.
Pool	Provide a new pool in current location with landscape, building upgrades, playground, and splash pad.

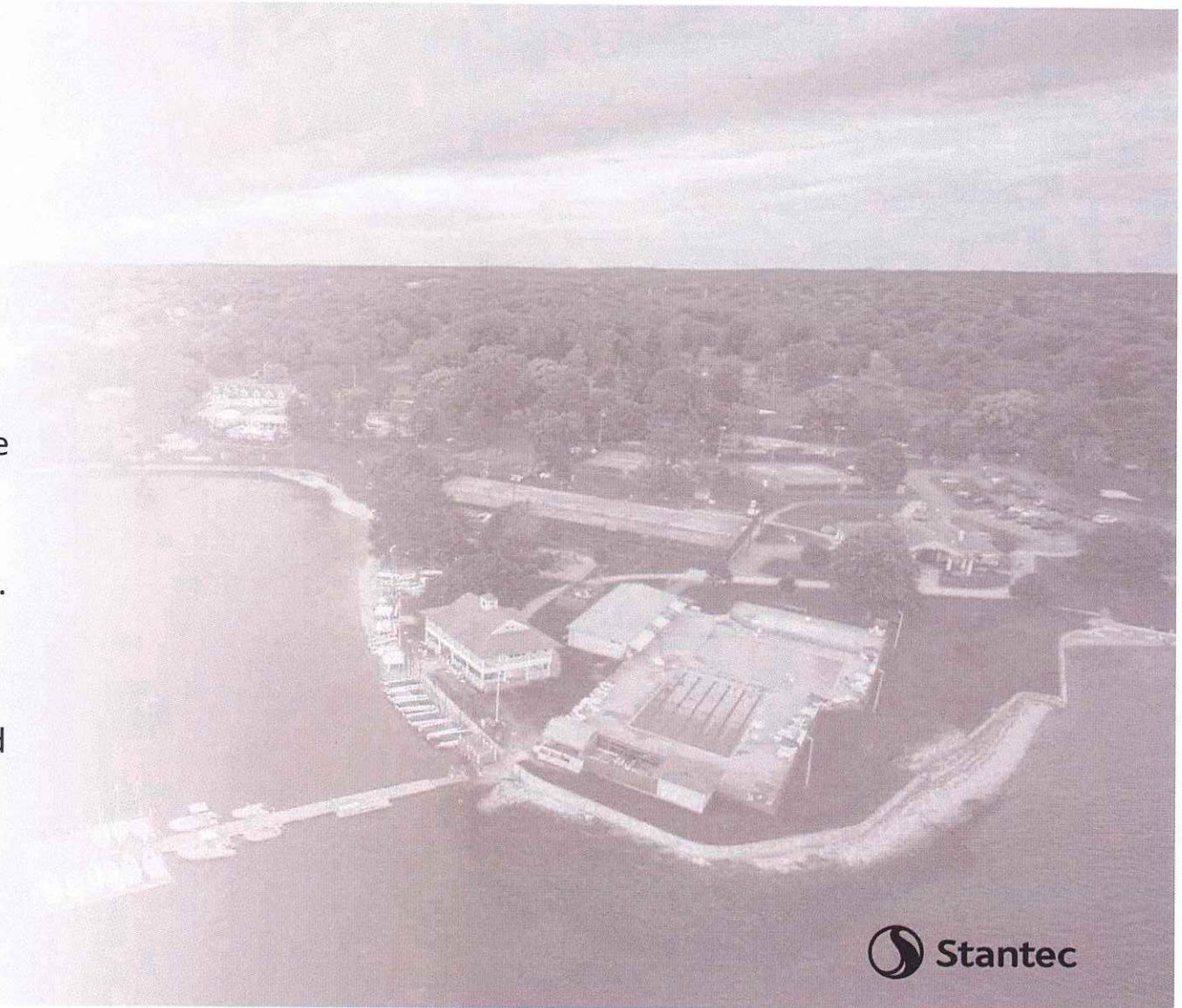
Longshore Club Park Capital Improvement Plan

Recommendations

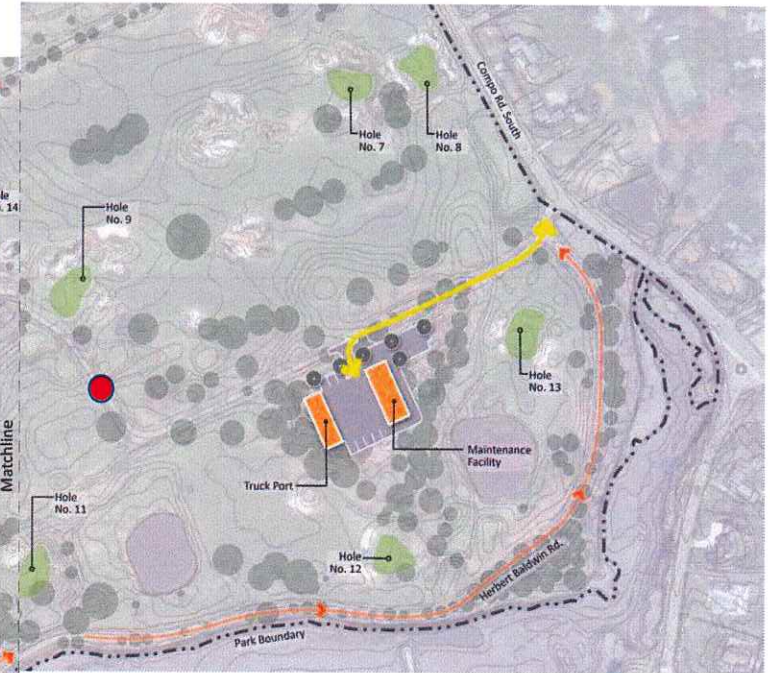
The aforesaid Park Improvement Program and Priorities informed the following recommendations.

Improvement recommendations are organized under two categories. These include:

- Park-wide improvements
- Specific improvements illustrated by zone (Zones 1-7).



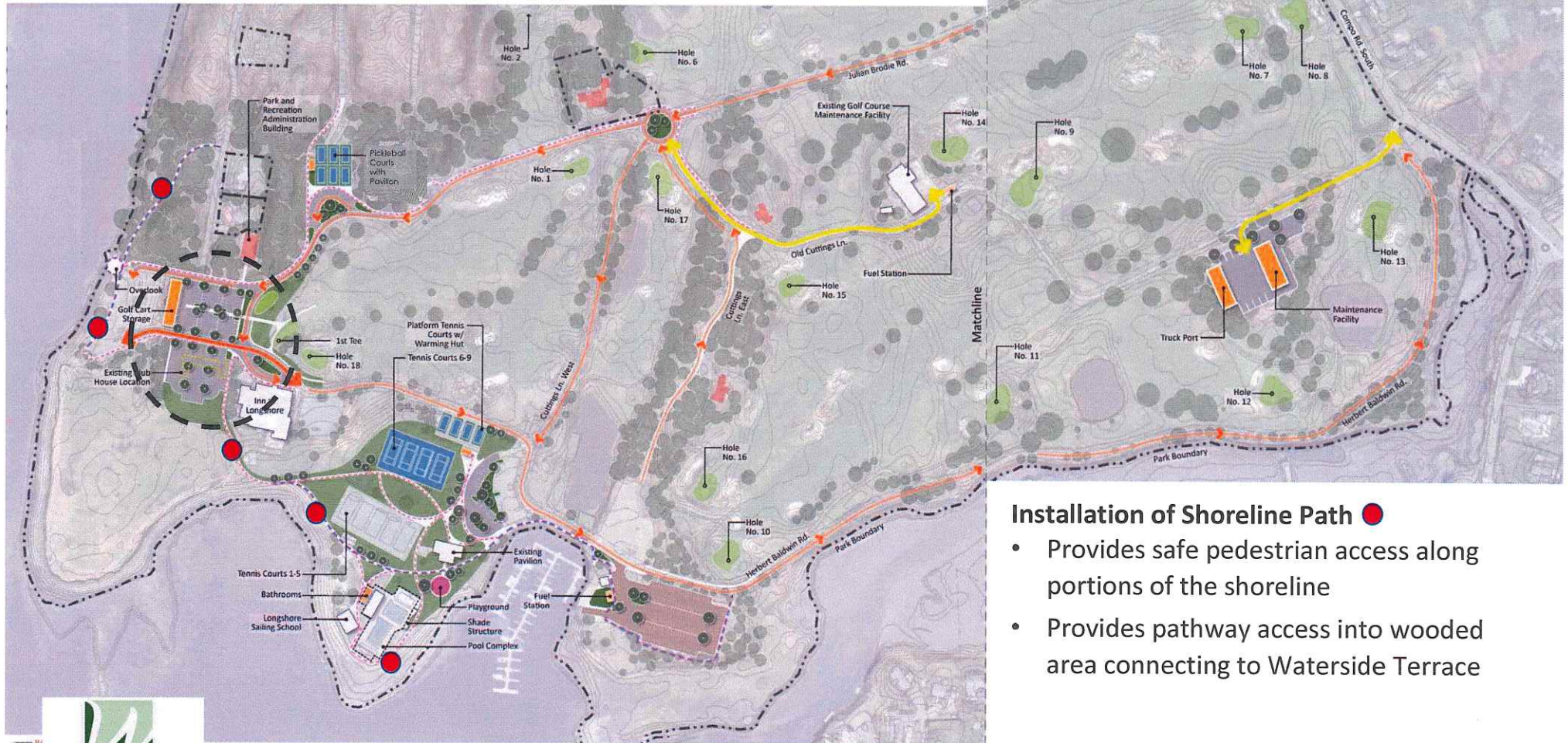
Park-Wide Improvements: Roadway Removal



Remove Impervious Surface and Prohibit Vehicular Access Between Halfway House and Brush Dump ●

- Reduces roadway crossings by golfers and carts, and conflicts between pedestrians/vehicles that utilize the roadway with golf play
- Reduction of asphalt surface improves stormwater management
- Allows access for maintenance vehicles only

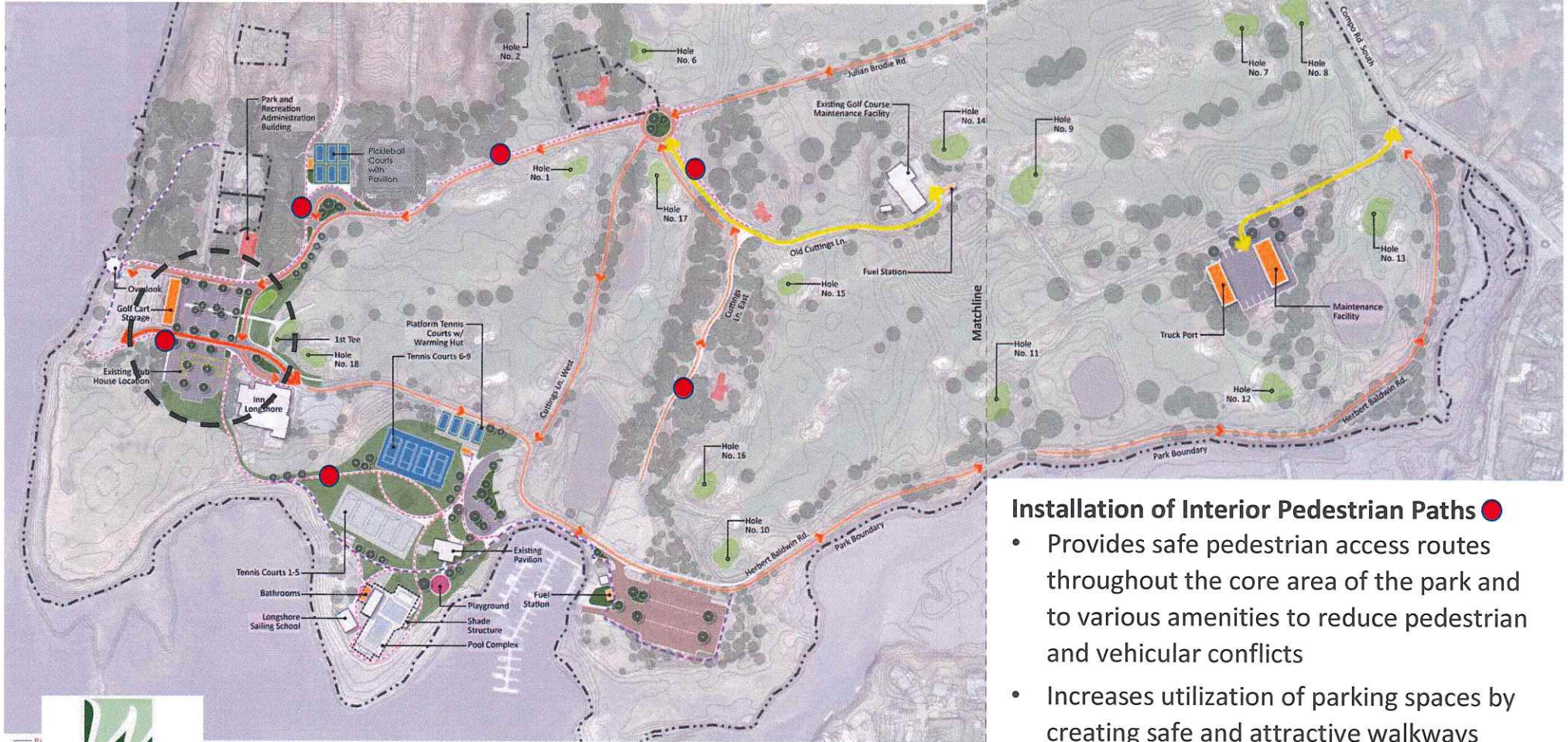
Park-Wide Improvements: Shoreline Path



Installation of Shoreline Path ●

- Provides safe pedestrian access along portions of the shoreline
- Provides pathway access into wooded area connecting to Waterside Terrace

Park-Wide Improvements: Pedestrian Paths



Installation of Interior Pedestrian Paths ●

- Provides safe pedestrian access routes throughout the core area of the park and to various amenities to reduce pedestrian and vehicular conflicts
- Increases utilization of parking spaces by creating safe and attractive walkways

Improvement Recommendations by Zone (Zones 1-7)

Zone Reference Map

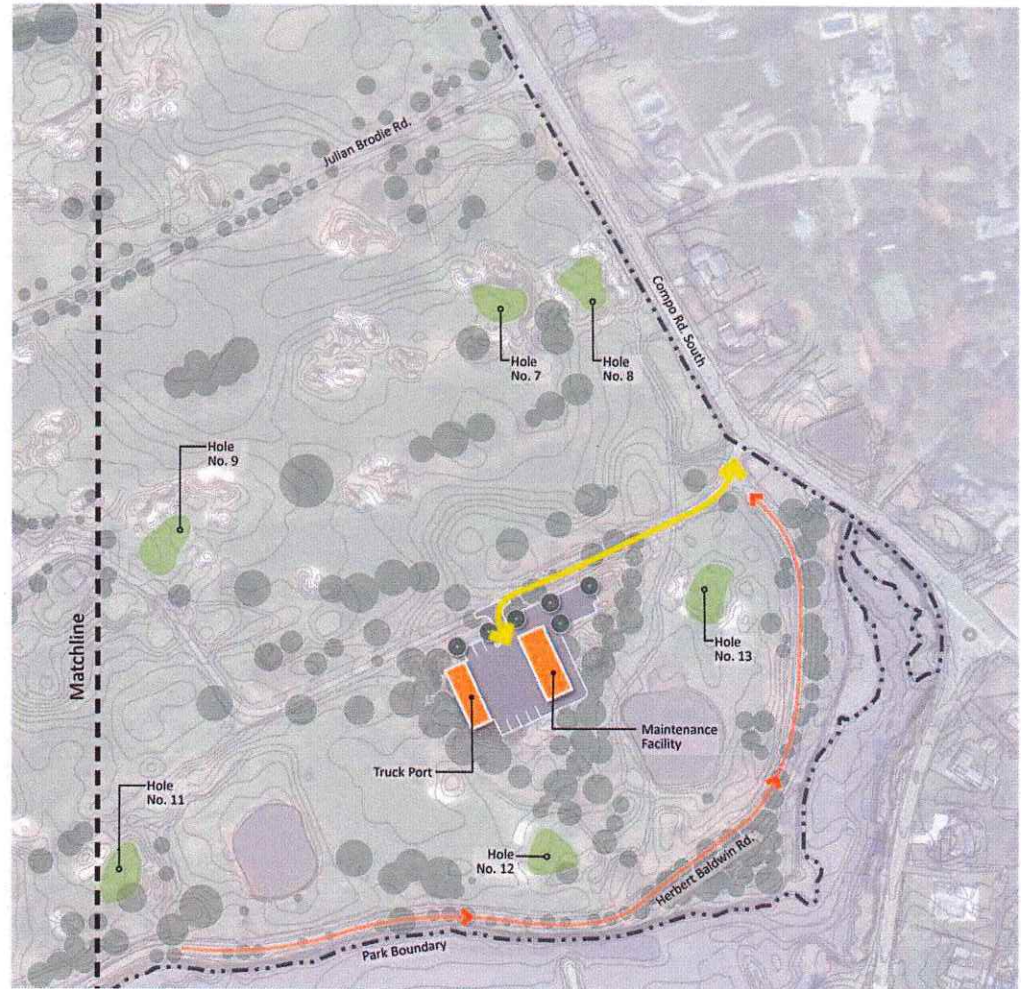
For planning purposes, areas of focus within the park were defined in zones (Zones 1-7, shown here). The following illustrations provide further detail on recommended improvements within each zone.



Improvement Recommendations: Zone 1 Town-wide Park Maintenance Facility

Relocation of Parks Maintenance Facility to Brush Dump

- Separates parks maintenance function from the rest of the park
- Reduces department vehicular traffic within the park (staff, delivery, and maintenance vehicles)
- Reduces fuel consumption and wear and tear on Parks vehicles
- Close to park egress thereby decreasing travel distance to other town facilities

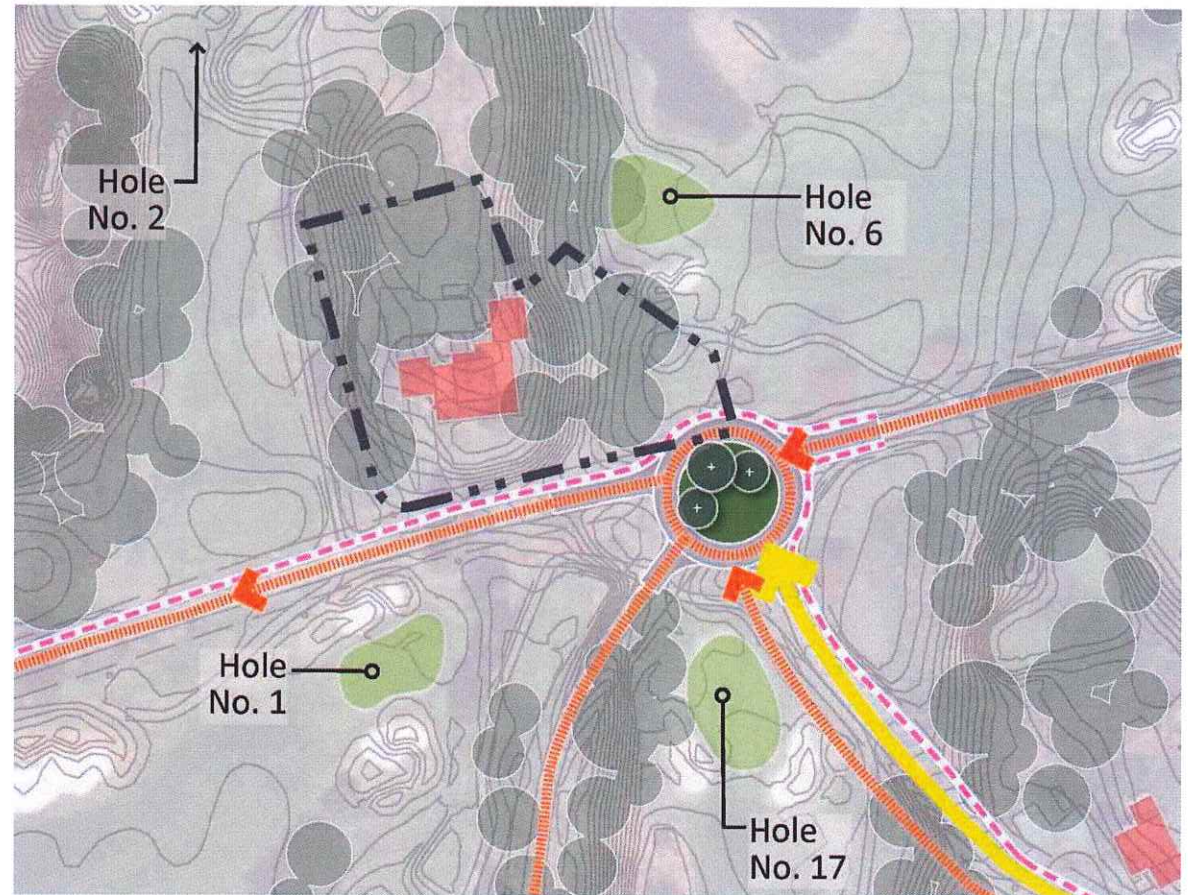


Improvement Recommendations: Zone 2

Gateway Circulation and Landscape

Traffic Circle

- Improves vehicular circulation, especially for those unfamiliar with the park and its associated traffic patterns
- Aesthetic improvement
- Reduces impervious surface (stormwater improvement)
- Improves the function of the Cuttings Lane loop road

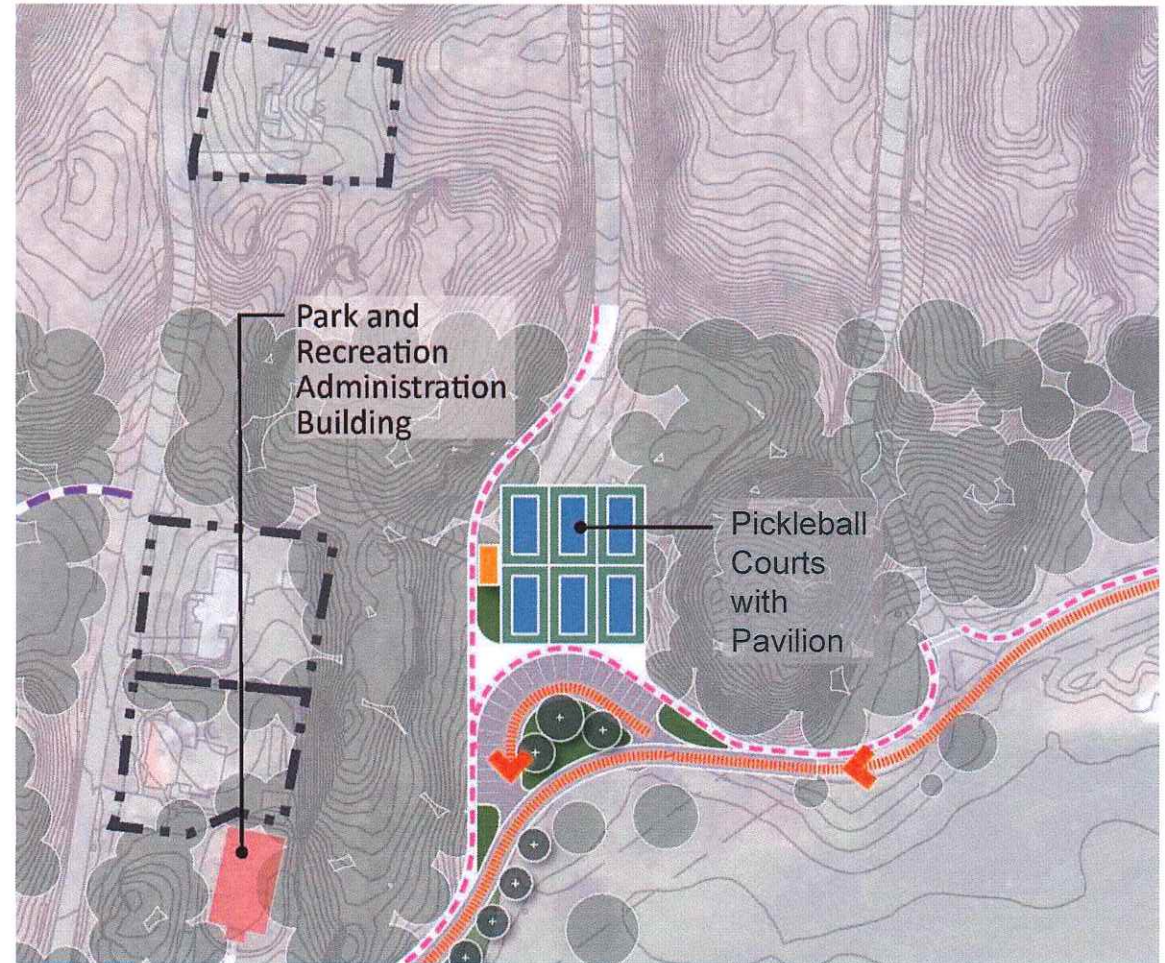


Improvement Recommendations: Zone 3

Pickleball Courts, Pavilion, Parking,
and Road Realignment

Pickleball Courts and Surrounds

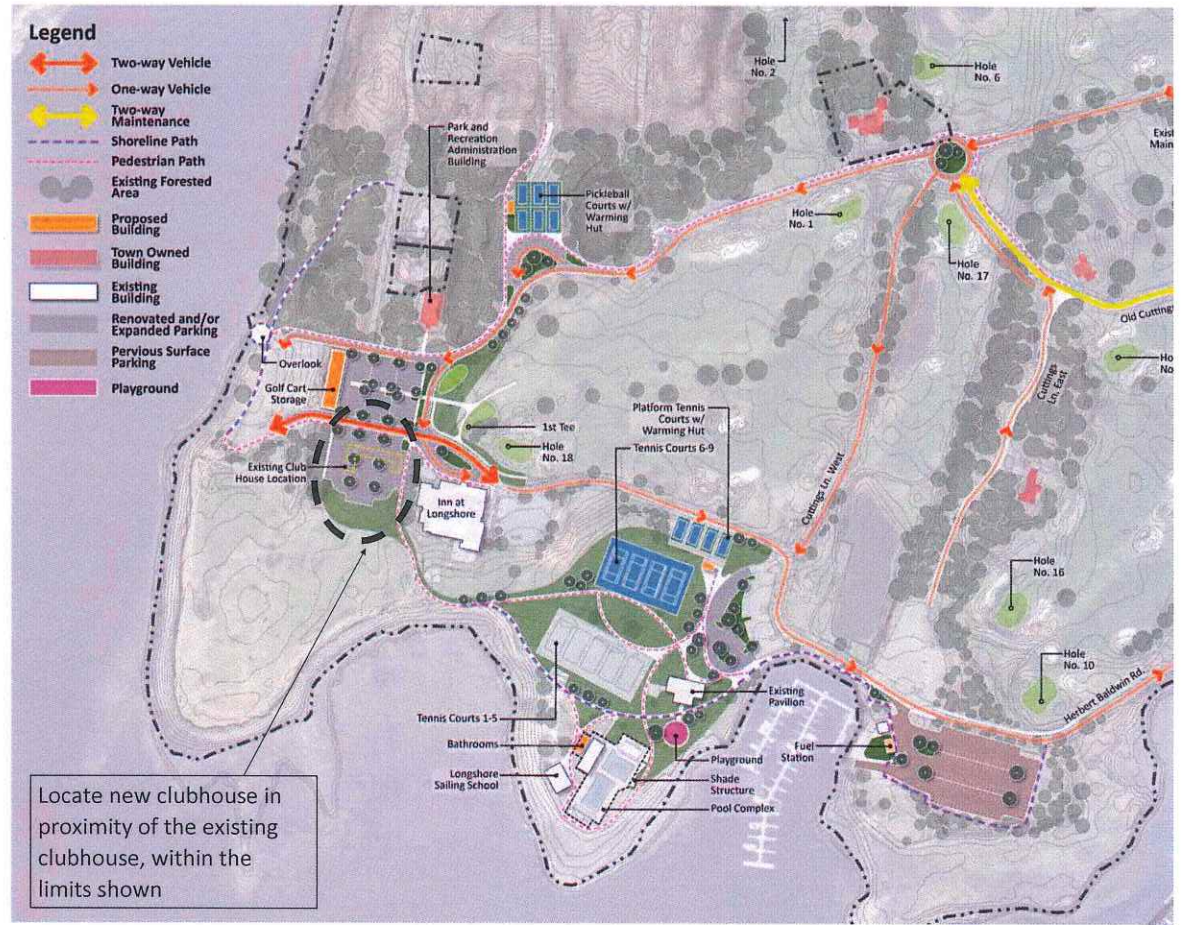
- Provides needed Town amenity for increasing demand and popularity of play
- Provides amenity without displacing or interfering with other park uses or functions



Improvement Recommendations: Zone 4

Clubhouse, Cart Barn, Parking,
Roads, and Inn at Longshore
Surrounds

Numerous alternatives were presented and discussed during preparation of this capital improvement plan. The selected option is included herein (see pages 23 and 24).

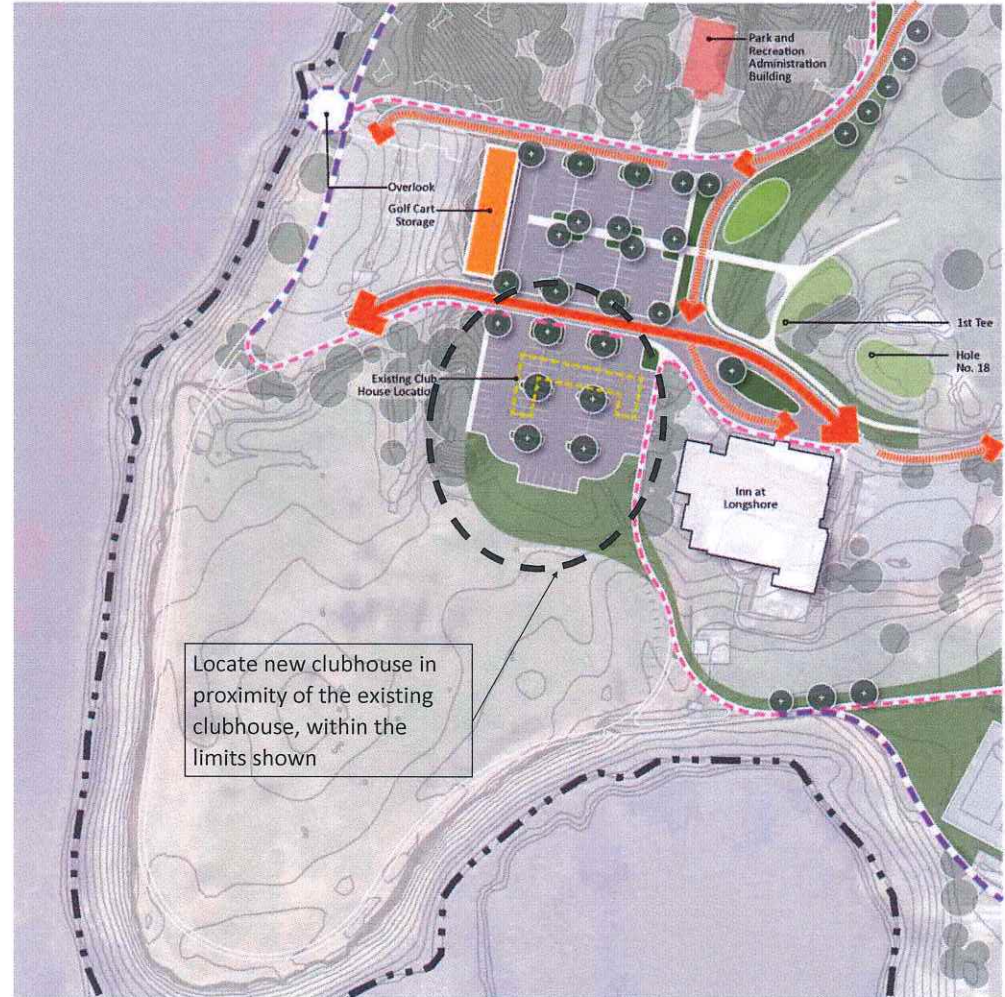


Improvement Recommendations: Zone 4

Clubhouse, Cart Barn, Parking, Roads, and
Inn at Longshore Surrounds

Clubhouse

- Provides a venue for golf functions
- Provides restrooms/locker rooms
- Provides a Pro Shop for equipment purchase, instruction, and event coordination
- Indoor instruction and club fitting
- Golfer check-in and payment location
- Practice green
- Provides a grill room and outdoor patio

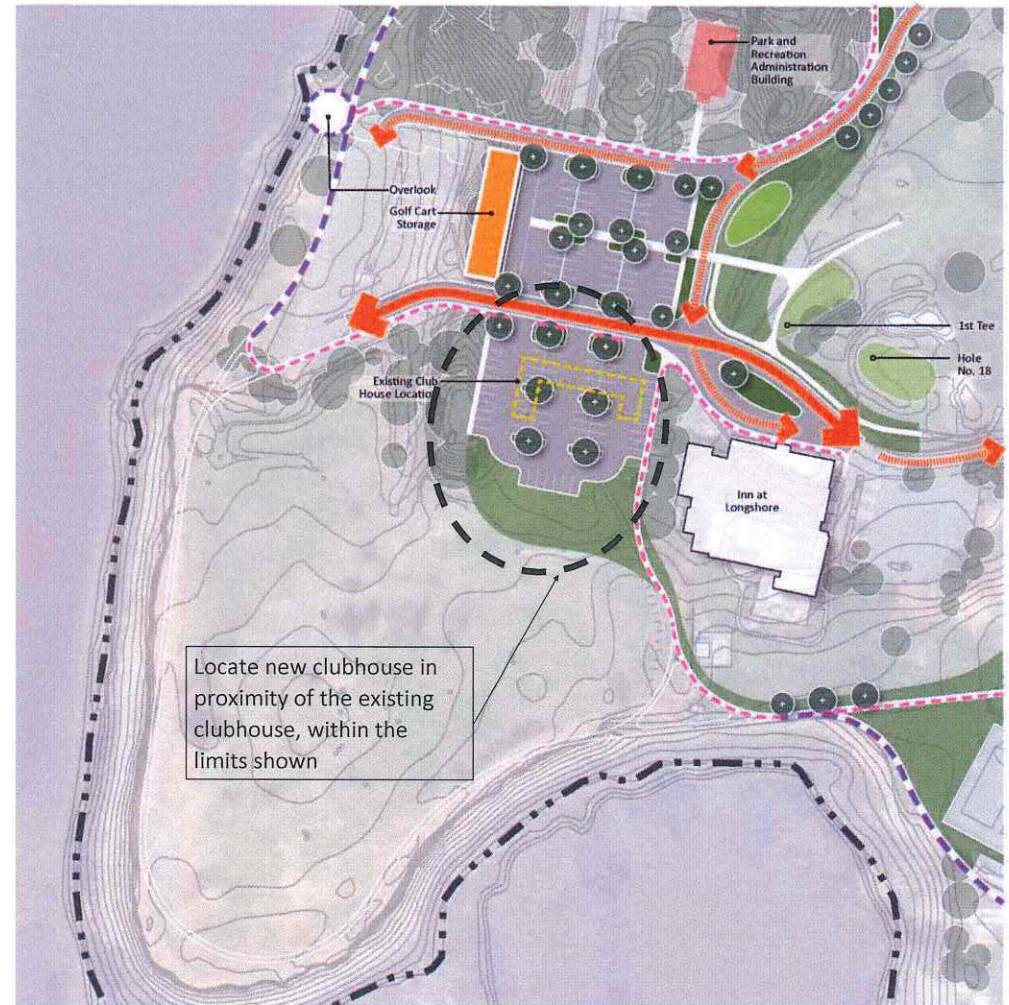


Improvement Recommendations: Zone 4

Clubhouse, Cart Barn, Parking, Roads, and Inn
at Longshore Surrounds

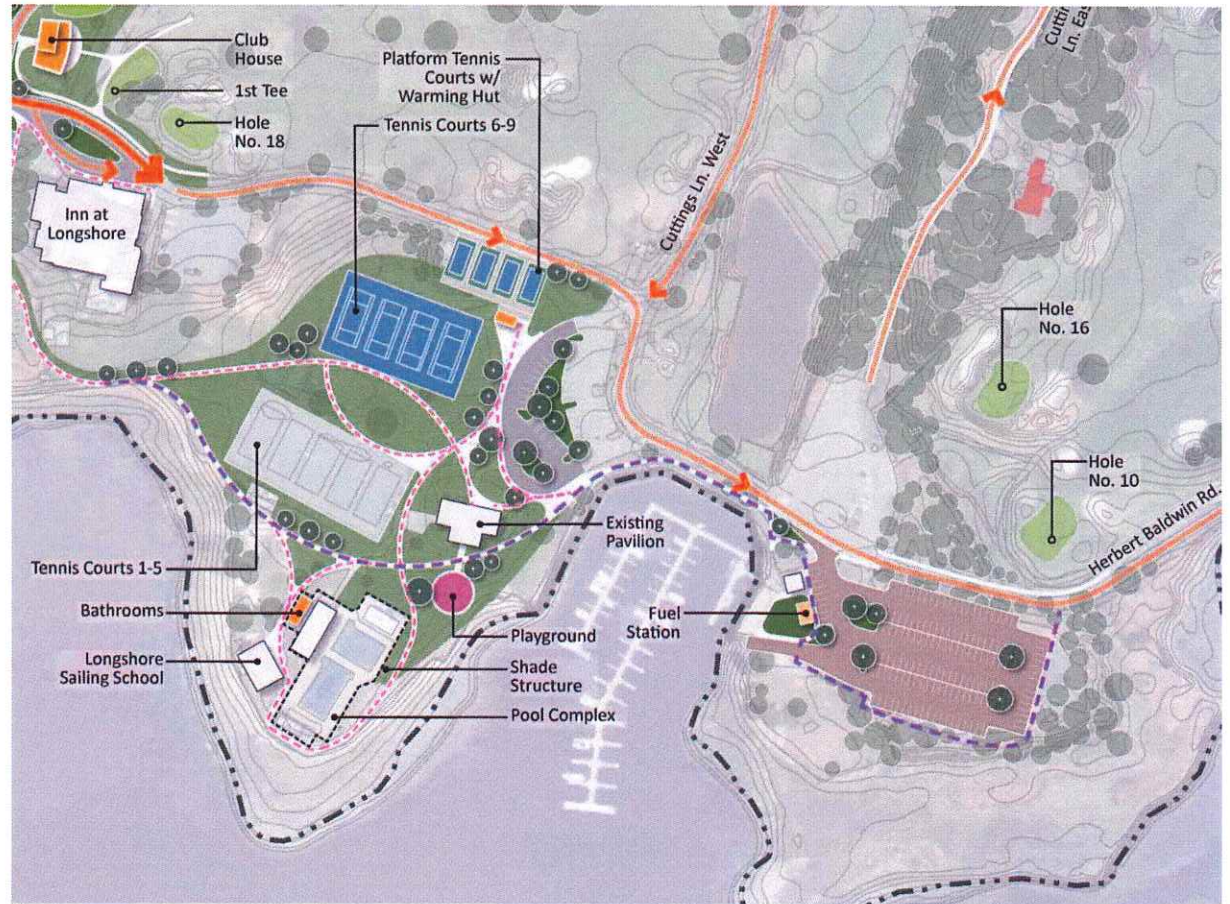
Site and Landscape

- Parking availability, improved accessibility to the Inn at Longshore, and enhanced pedestrian connectivity from lower parking area
- Maintaining parking capacity
- Introduces stormwater measures (water quality enhancements)
- Shaded parking areas mitigate heat gain and enhance user comfort
- Allows for renovation of service area adjacent to the Inn
- Sets the main park drive away and further to the west from the 1st tee



Improvement Recommendations: Zones 5 and 6

Tennis Courts, Platform Tennis,
Pool, Playground, Pathways, and
Parking (see pages 26-29)



Improvement Recommendations: Zone 5

Tennis and Platform Tennis Upgrades and Expansion

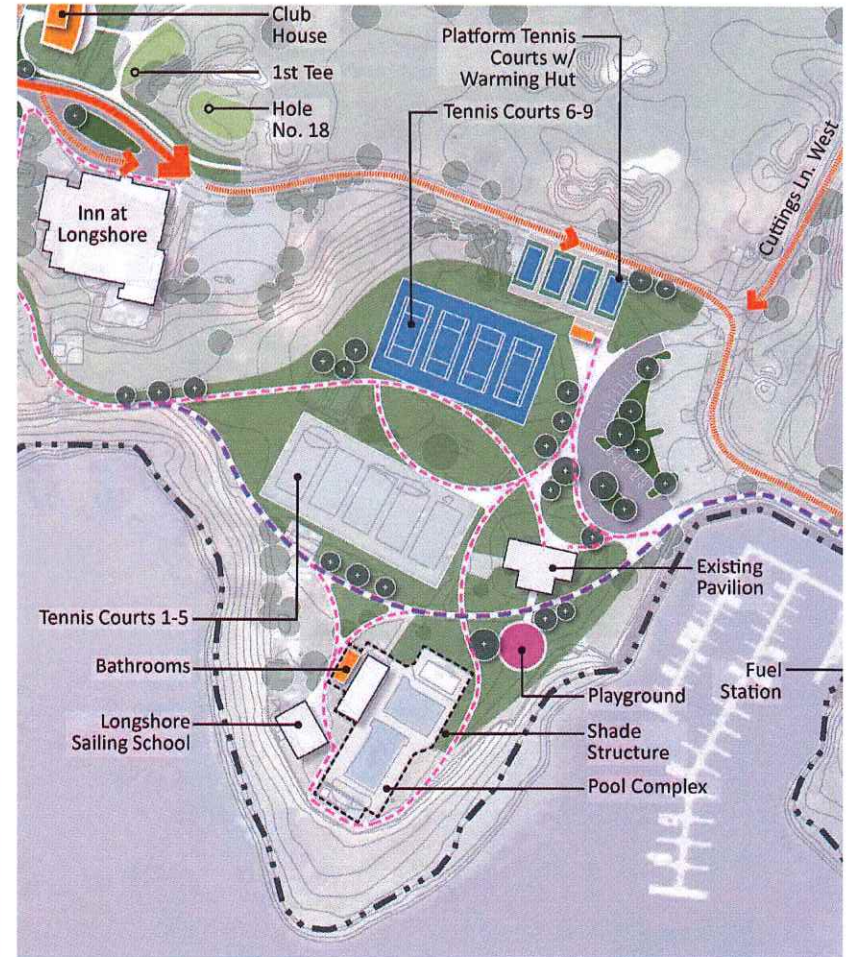
- Minimizes fragmentation of open space
- Provides a contiguous space to host events
- Retains space for event overflow parking
- Relocates platform tennis courts closer to parking
- Utilizes slope differential for elevated platform assembly
- Realignment of drop off adds 12 parking spaces
- Realignment of courts 6-9 allows for possible bubble installation
- Realignment of courts overlaps with footprint of existing courts
- Removal of Parks Maintenance facility reduces congestion
- Reduces visual clutter and opens views toward the water



Improvement Recommendations: Zone 5

Relocate Parks' Maintenance Facility to Zone 1

- Removes unsightly clutter and maintenance function from high use area
- Improves aesthetics in center of the park
- Creates space for platform tennis in a centralized recreation location with tennis
- Reduces department vehicular traffic within the park (staff, delivery, and maintenance vehicles)
- Reduces fuel consumption and wear and tear on Park's vehicles



Improvement Recommendations: Zone 5

Pool and Playground

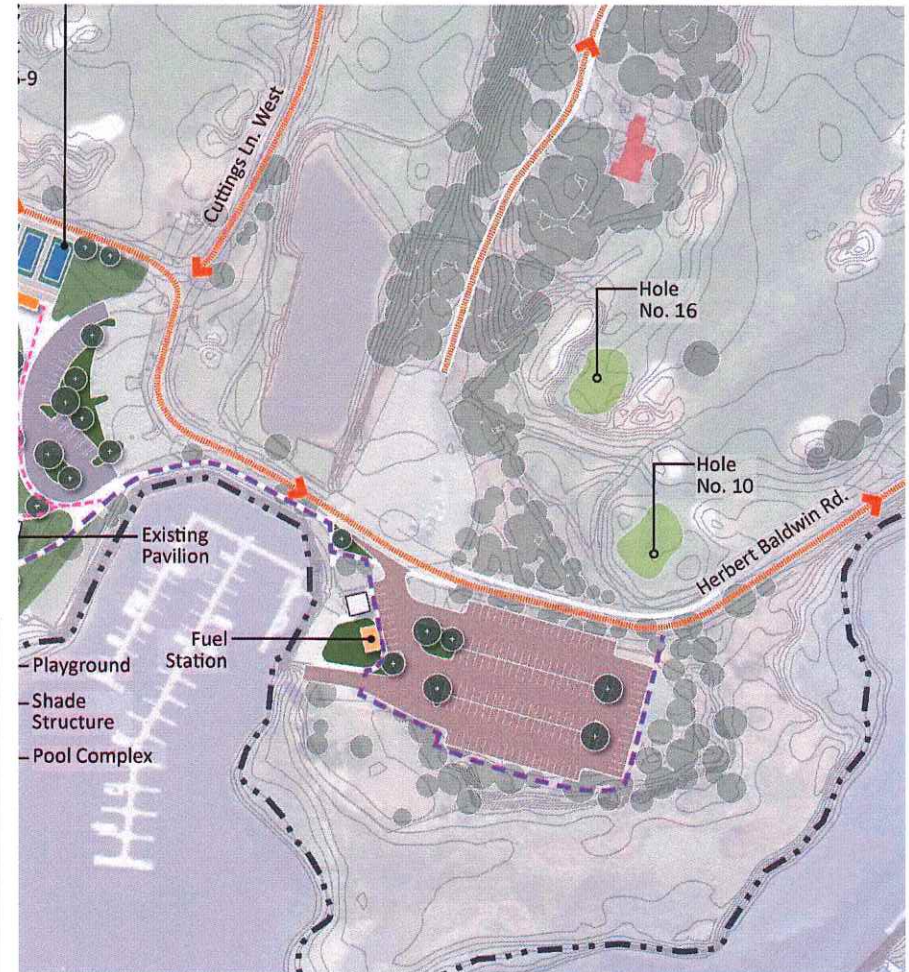
- Current pools are outdated and have exceeded life expectancy
- Zero entry pool will enhance accessibility for all patrons
- A splash pad will complement playground and pool uses
- Redesign will create opportunity to open views to water
- Playground relocation allows improved access to sailing school
- Current playground is outdated and in need of replacement
- Exterior restrooms off pool building improves accessibility for Sailing School patrons and alleviates need for portable toilets
- Consolidated playground and pool environment increase enjoyment and ease of parental supervision
- Provides new amenities



Improvement Recommendations: Zone 6

Parking Lot F and Evan Harding Point

- Removal of parks maintenance vehicles and equipment provides up to 30 parking spaces
- Renovation of Lot F creates an additional 35 parking spaces (150 proposed vs. 115 existing)
- Potential additional amenities at Evan Harding Point improves user experience and replaces dated and weathered equipment

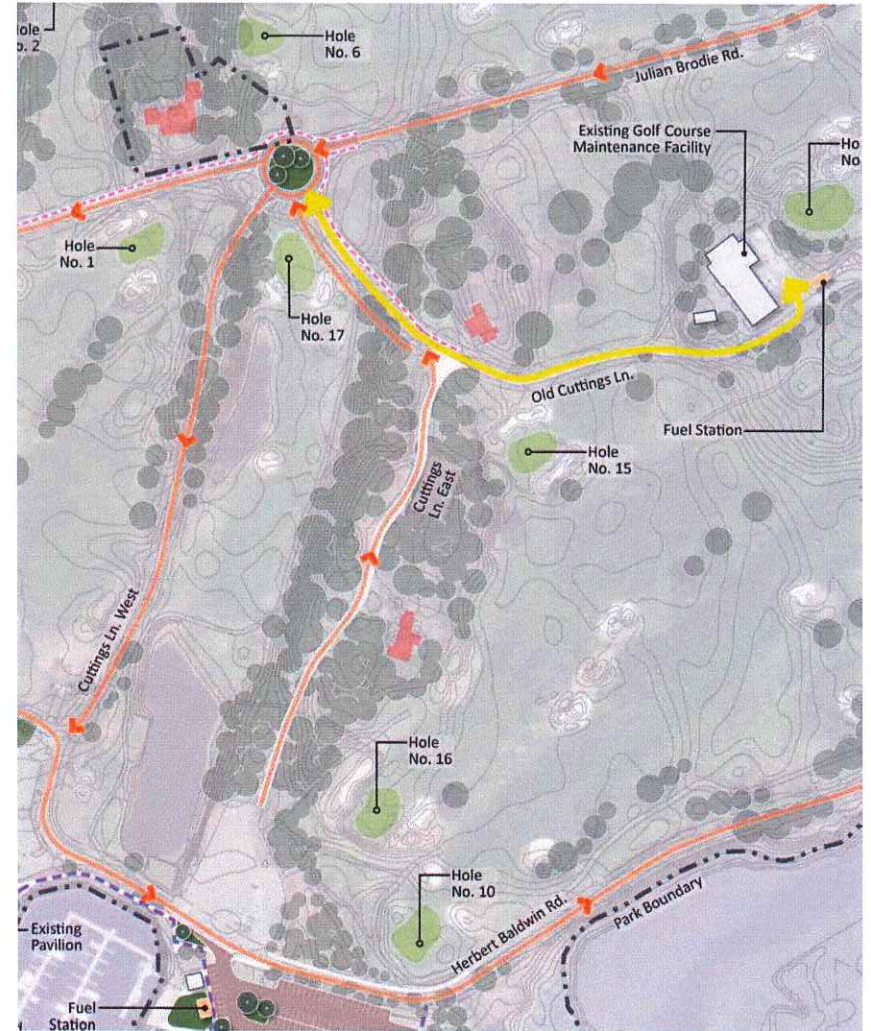


Improvement Recommendations: Zone 7

Cuttings Lane East Road

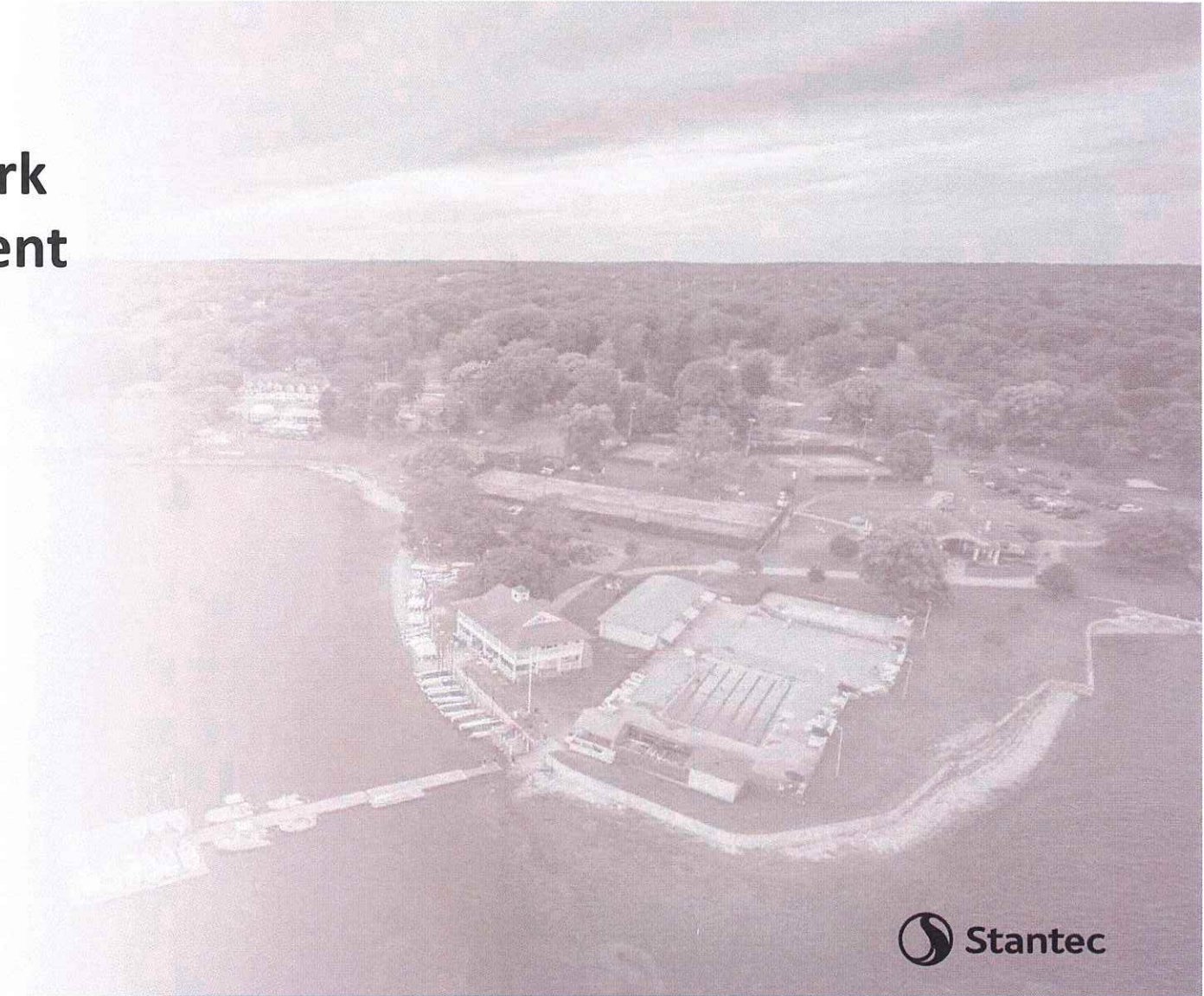
Cuttings Lane East

- Renovation improves interior vehicle circulation without needing to exit the park or creating conflicts with golf play
- Renovation of roadway allows for installation of a dedicated interior pedestrian pathway



Longshore Club Park Capital Improvement Plan

10-Year Forecast



Longshore Club Park Capital Improvement Plan

10-Year Forecast

The following forecast captures these improvement recommendations and their respective costs with a schedule for implementation over a 10-year period. Individual projects are scheduled to address the current lack of facilities, the condition of existing facilities, infrastructure upgrades, community enjoyment of the park, and sustainability for the long-term delivery of quality service to the residents of the Town of Westport.

Specific projects are scheduled to unlock the implementation of other needed improvements. For example, the current town-wide park maintenance facility will require relocation before new platform tennis courts can be constructed. Similarly, utility and parking area improvements precede or run concurrent with recreation facility improvements. The 10-year forecast seeks to achieve the highest levels of efficiency and fiscal responsibility.

Longshore Club Park Capital Improvement Plan

10-Year Forecast

Legend

- * Supercedes value in Town of Westport 2023 5-Year Capital Forecast
- ** Portion reallocated from Town of Westport 2023 5-Year Capital Forecast
- *** Portion reallocated from Town of Westport 2023 5-Year Capital Forecast
- **** Town of Westport 2023 Capital Forecast value removed and reallocated to other line item

Design and approvals

Construction

Town of Westport 2023 5-Year Capital Forecast item with assigned cost included here

Improvement	Description	Year 1	Year 2	Year 3	Year 4	Year 5	Year 6	Year 7	Year 8	Year 9	Year 10
Park Infrastructure	Dredge Longshore Marina Shoaling			\$ 725,000							
	Replace Fuel Tank at Longshore Marina		\$ 140,000								
	Water Line Installation	\$ 200,000		\$ 600,000	\$ 600,000		\$ 400,000		\$ 400,000		
	Replace Fuel Tanks at Golf Maint. Facility			\$ 150,000							
Golf Clubhouse, Cart Barn, Parking and Surrounds	Cart Barn (50 capacity)				\$ 105,000	\$ 925,000					
	Zone 4 Roadway, Site Work, Paths, and Parking				\$ 390,000	\$ 3,400,000					
	Golf Clubhouse and Perimeter Landscape*				\$ 100,000	\$ 350,000	\$ 3,500,000				
Tennis Court Upgrades		\$ 100,000									
Pickleball Courts (6)	Pickleball Courts, Pavilion & Parking	\$ 275,000	\$ 2,600,000								
Parks' Maintenance Facility	Parks Maintenance Facility ****										
	Parks' Maint. Facility w/ exit/entry	\$ 283,000	\$ 283,000	\$ 9,500,000							
	Demolish Exist. Parks Maint. Bldg & Site Prep			\$ 70,000	\$ 580,000						

Longshore Club Park Capital Improvement Plan

10-Year Forecast

Improvement	Description	Year 1	Year 2	Year 3	Year 4	Year 5	Year 6	Year 7	Year 8	Year 9	Year 10
Renovate Existing Tennis Courts and New Platform Tennis Courts (4)	Realign/Renovate Tennis 6-9			\$ 65,000	\$ 670,000						
	Platform Tennis Courts			\$ 110,000	\$ 935,000						
Parking	Realign Zone 5 Parking, Drop-Off and Pathways							\$ 198,000		\$ 1,750,000	
Parking	Renovate Parking Lot F incl. Evan Harding Amenities						\$ 270,000	\$ 2,775,000			
Pool	Longshore Pool Improvements***										
	Add Shade Elements (Site Furnishings)	\$ 75,000									
	Add Exterior Facing Restrm. to Pool Building							\$ 30,000		\$ 150,000	
	Replace Playground / Landscape Enhancements							\$ 95,000		\$ 785,000	
	New Pool and Splash Pad							\$ 560,000	\$ 7,300,000		
Roadway/Circulation Enhancements	Renovate Cuttings Lane East w/ Lot E Connection									\$ 115,000	\$ 1,100,000
	Zone 2 Roadway and Landscape Enhancements									\$ 95,000	\$ 825,000
Evaluate after Year 10	Extend Zone 4 Shoreline Path to Point										
	Renovate Golf Practice Facility										
Total Per Year		\$ 833,000	\$ 3,123,000	\$ 7,220,000	\$ 3,360,000	\$ 4,675,000	\$ 4,170,000	\$ 3,668,000	\$ 7,600,000	\$ 2,905,000	\$ 1,925,000



Longshore Club Park Capital Improvement Plan 2023 Final Report

Prepared for:
Town of Westport Parks and
Recreation Commission

Prepared by:
Stantec, New Haven, CT

May 17, 2023

