



WESTPORTsm

DOWNTOWN PLAN IMPLEMENTATION COMMITTEE

Monday, January 20, 2023, Draft Minutes

In attendance: Chair: Randy Herbertson; Members: Pippa Bell Adler, Kenneth G. Bernhard, Gary Conrad, Maxwell Crowley, Jen Fava, Matthew Mandell, Johanna Martel, Brian McGonugle, Deirdre O'Farrelly, Jenna Petok, Peter Ratkiewich, Gately Ross, Mary Young; Staff: Andrés A. Lapadula

The Downtown Plan Implementation Committee held a remote public meeting at 8:30 a.m. on **Friday, January 20, 2023**, for the following purposes:

I. Opening Remarks - Chair

A. Overall Meeting Goals

No action Taken

B. [Approval of Minutes](#) (12/2022 Meeting)

MOTION (Ratkiewich): To approve the minutes of the December 8, 2022, meeting.

SECOND: Young

VOTE: Unanimously approved.

II. Strategic Priority Review

A. Parking Lots Reinvention

1. Downtown Lots Design Master Plan -Reconnecting the Riverfront

a) Langan Review and Vote - Parker Harding

- i) Michael Langan presented the schematic design for Parker Harding lot, attached as Addendum 1 to these minutes. Design includes materials study, art and educational opportunities, habitat study for vegetation and pollinators*
- ii) Committee member Mary Young described design as having "parking and circling space, contains resiliency opportunities, sustainability opportunities, donor opportunities, is ecologically and environmentally sensitive, and follows*

the Village District guide for design materials.”

iii) *Questions and comments from committee members and the attending public*

MOTION (YOUNG): To approve Schematic Design for continued development

SECOND: Martell

ABSTENTION: Mandell

VOTE: NO OBJECTIONS, PASSED

b) Arts Advisory Sub-Committee – *Discussed new membership and invited nominations*

C. Sustainability

1. WEDG Certification (Langan)

D. Project Approval Process

1. DPIC

30% Plan Submission

2. Begin DEEP/ ACOE Submission

3. Parks Advisory Committee

4. Parks and Recreation Commission

5. Flood Board

6. Conservation

7. Traffic Authority for Crosswalk and roadway relocations

8. P&Z 8-24?

70% Plan Submission

9. Village District Review (ARB and HDC combined)

10. Tree Board

11. ZBA -only if necessary

12. P&Z Coastal Area Management (CAM), and Site Plan Approval

13. Board of Finance (2 meetings and a site visit) OPC Required

14. RTM Committees - PW, FIN, P&R, ENV

15. Full RTM

16. State DOT Preliminary Review

100% Plan Submission

17. State DOT Final Review

Construction Drawings

18. Bid Project out in Public Bid

19. Possible re-visit to BOF /RTM if additional funding needed

III. To adjourn the meeting.

Motion (Young): To adjourn the meeting.

Second: Petok

Meeting adjourned 9:48 AM

Randy Herbertson, Chair

Downtown Plan Implementation Committee

January 23, 2022

ADDENDUM 1



**RECONNECTING
THE RIVERFRONT**

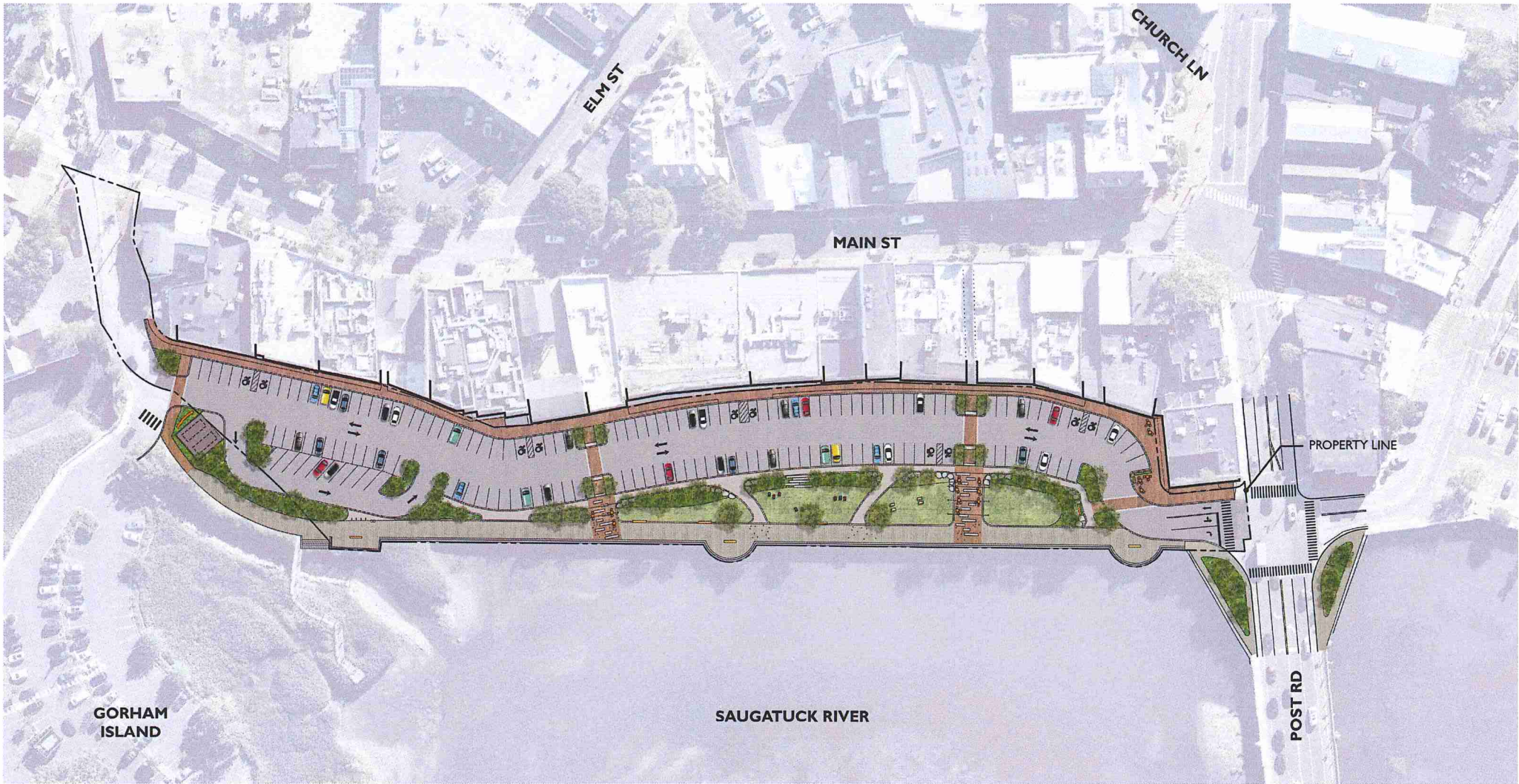
 **DOWNTOWN WESTPORT**

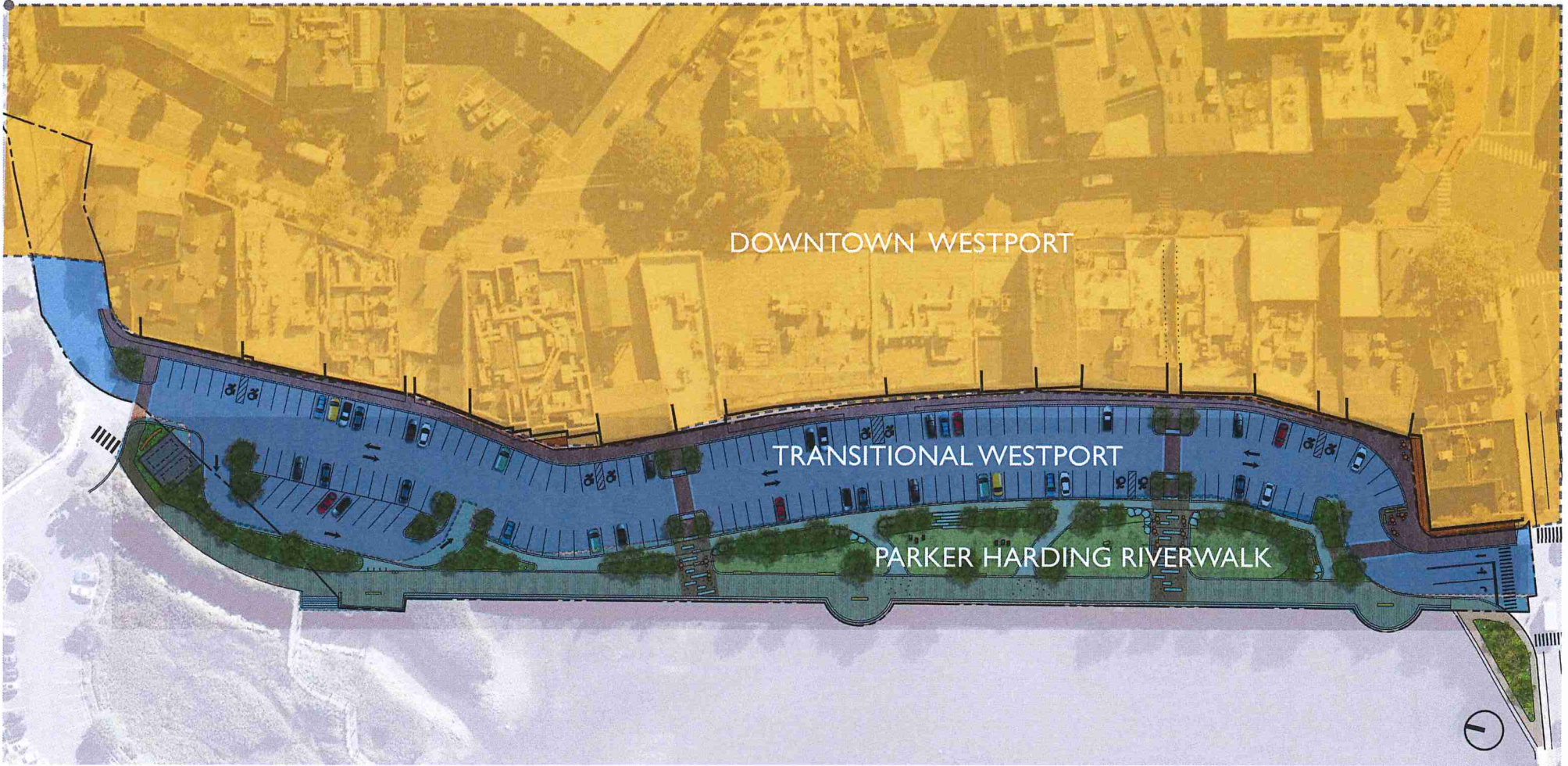
**PARKER HARDING PLAZA
SCHEMATIC DESIGN**

JANUARY 2023

 **WESTPORT**
DOWNTOWN PLAN
IMPLEMENTATION COMMITTEE

LANGAN





PLANTER EDGE

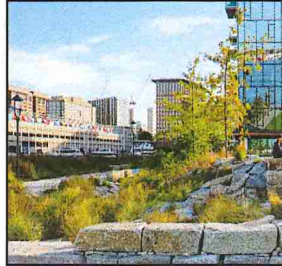
FLUSH GRANITE



CORTEN STEEL EDGE



BOULDER EDGE



PAVING MATERIALS

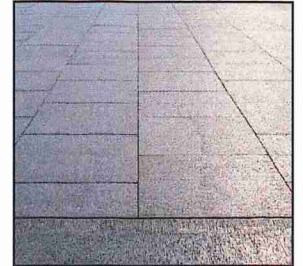
WOOD BOARDWALK



BRICK PAVING



CONCRETE



SITE FURNISHING

FREE STANDING



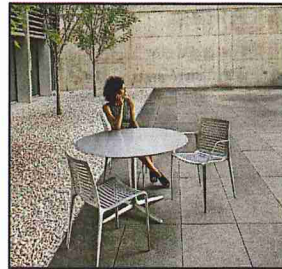
LOUNGE CHAIRS



WOOD TOP ON GRANITE



TABLES AND CHAIRS



HANDRAILS

WOOD + CABLE



WOOD + MESH INFILL



BOARDWALK

HARDWOOD

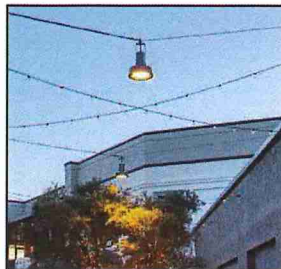


OTHER HARDWOOD



CATENARY LIGHTS

PENDANT



CABLE



WOOD AND CABLE



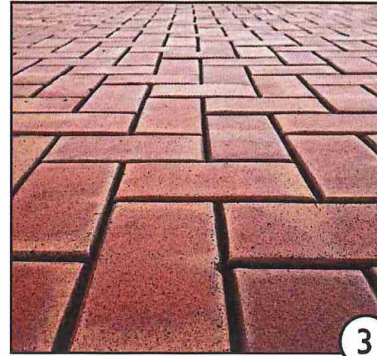
1

WOOD BOARDWALK



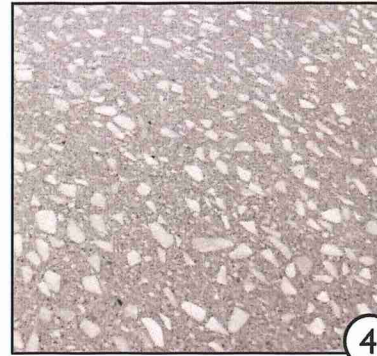
2

WESTPORT BRICK



3

EXPOSED AGGREGATE

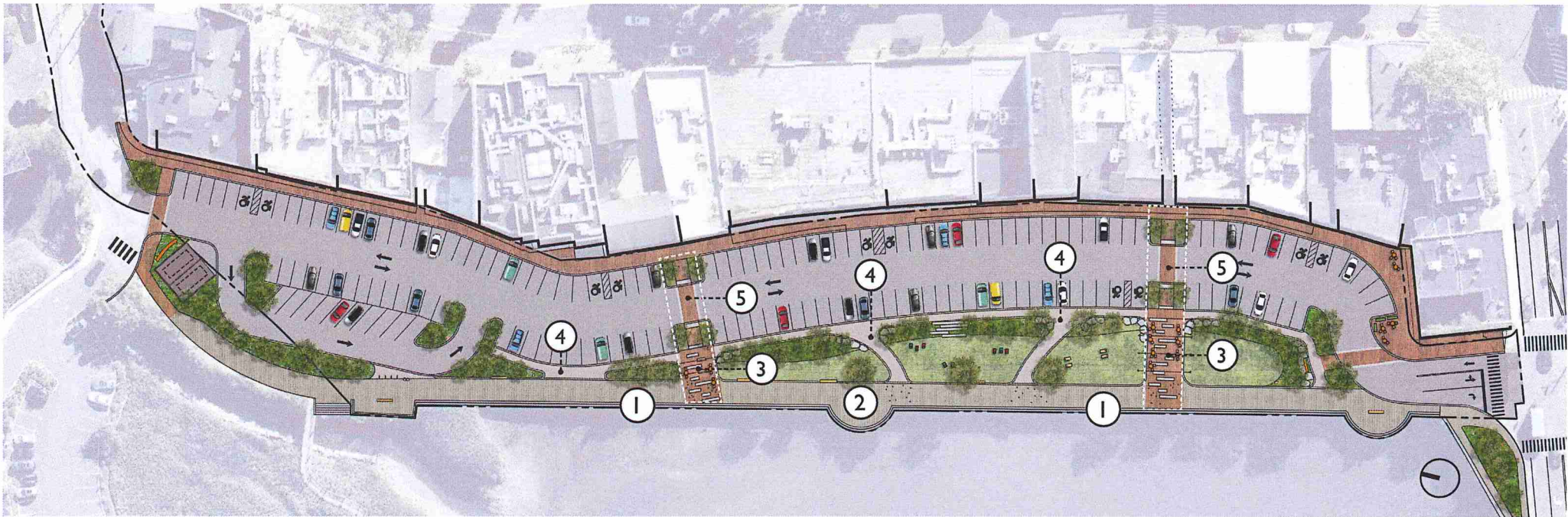


4

STAMPED ASPHALT



5



CORTEN STEEL EDGE



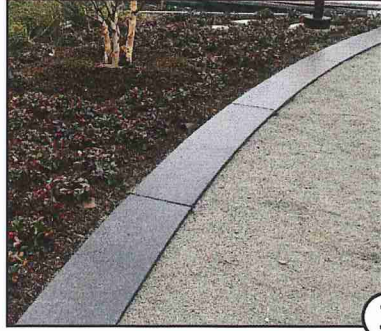
1

BOULDER EDGE

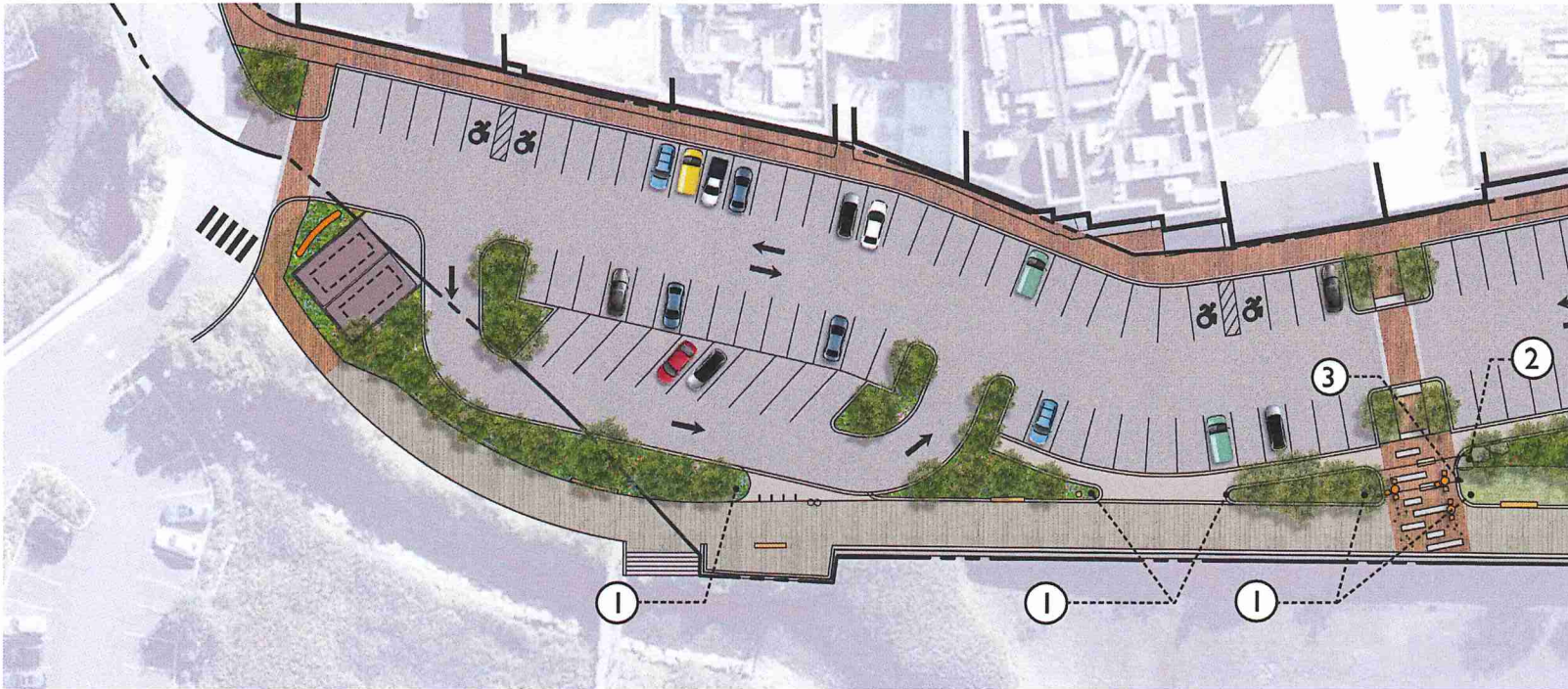


2

FLUSH GRANITE



3



SEE PLANTER EDGES (2)



CORTEN STEEL EDGE



1

BOULDER EDGE



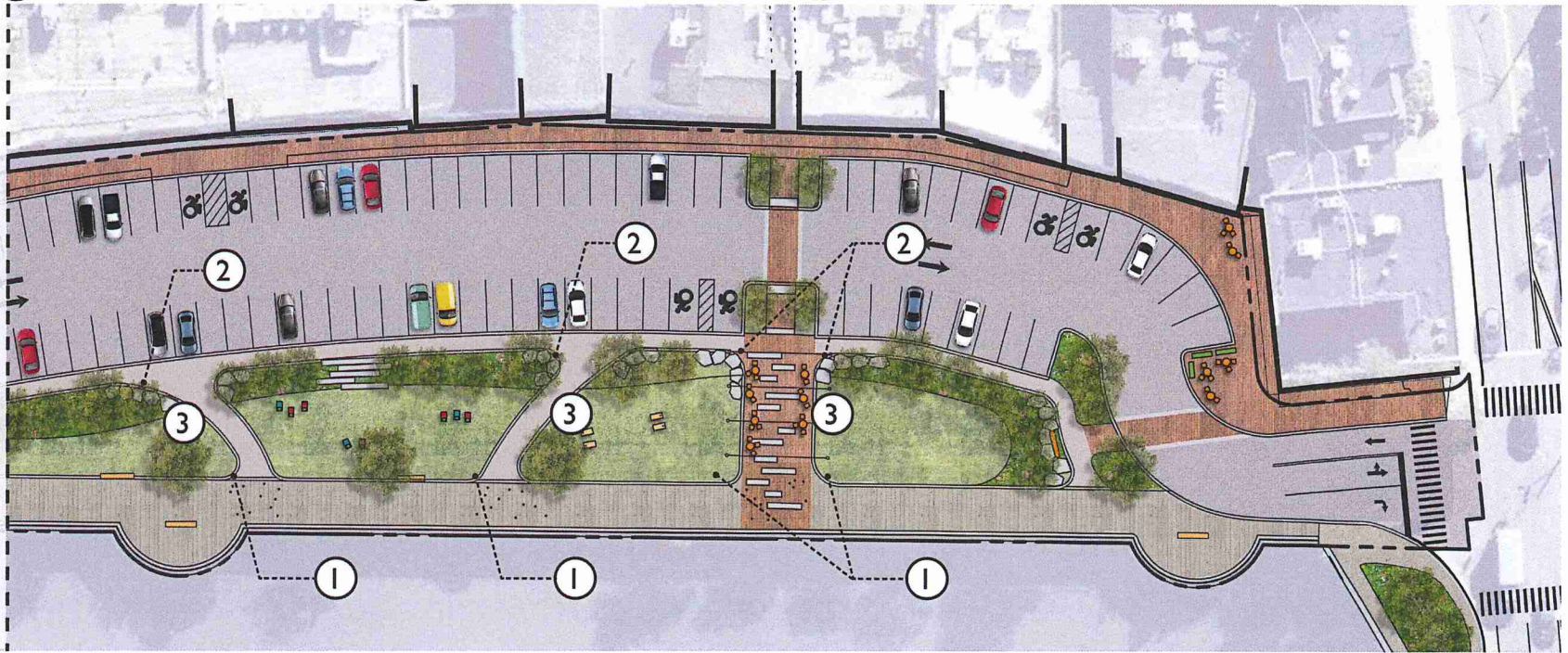
2

FLUSH GRANITE



3

SEE PLANTER EDGES (1)



BENCH



1

GRANITE BENCH



2

TABLES AND CHAIRS



3

BIKE RACKS

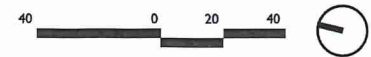
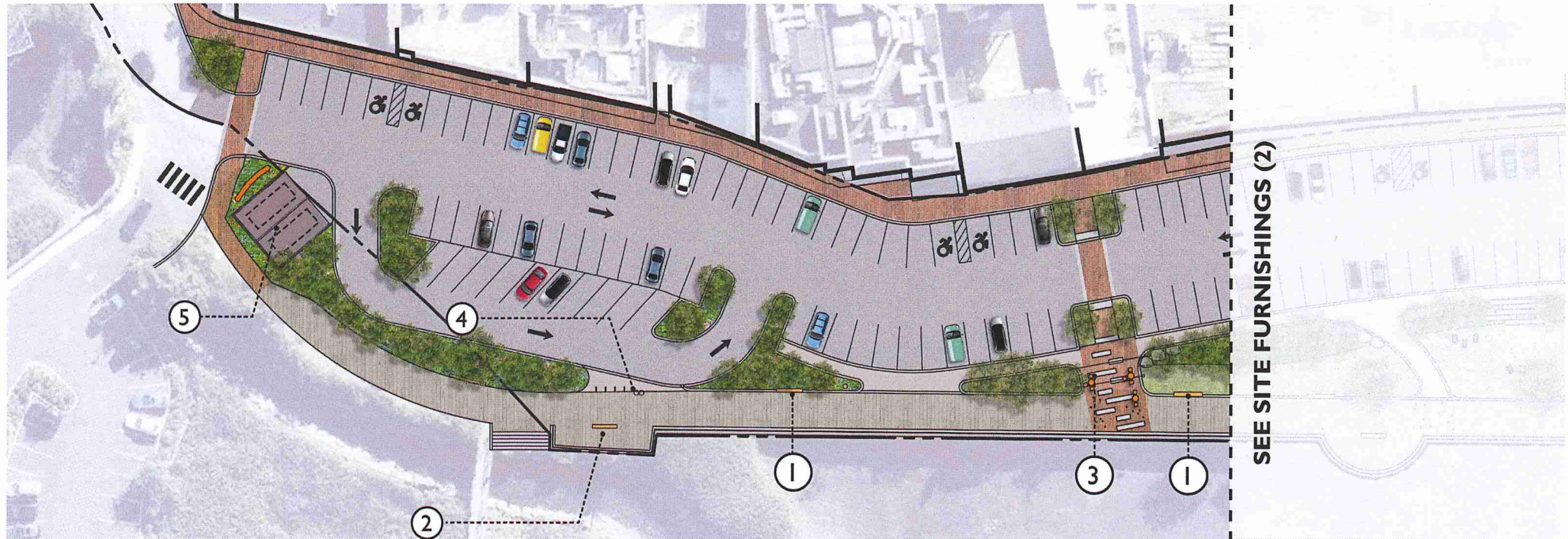


4

DUMPSTER ENCLOSURE



5



BENCH



1

GRANITE BENCH



2

TABLES AND CHAIRS



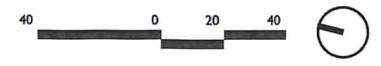
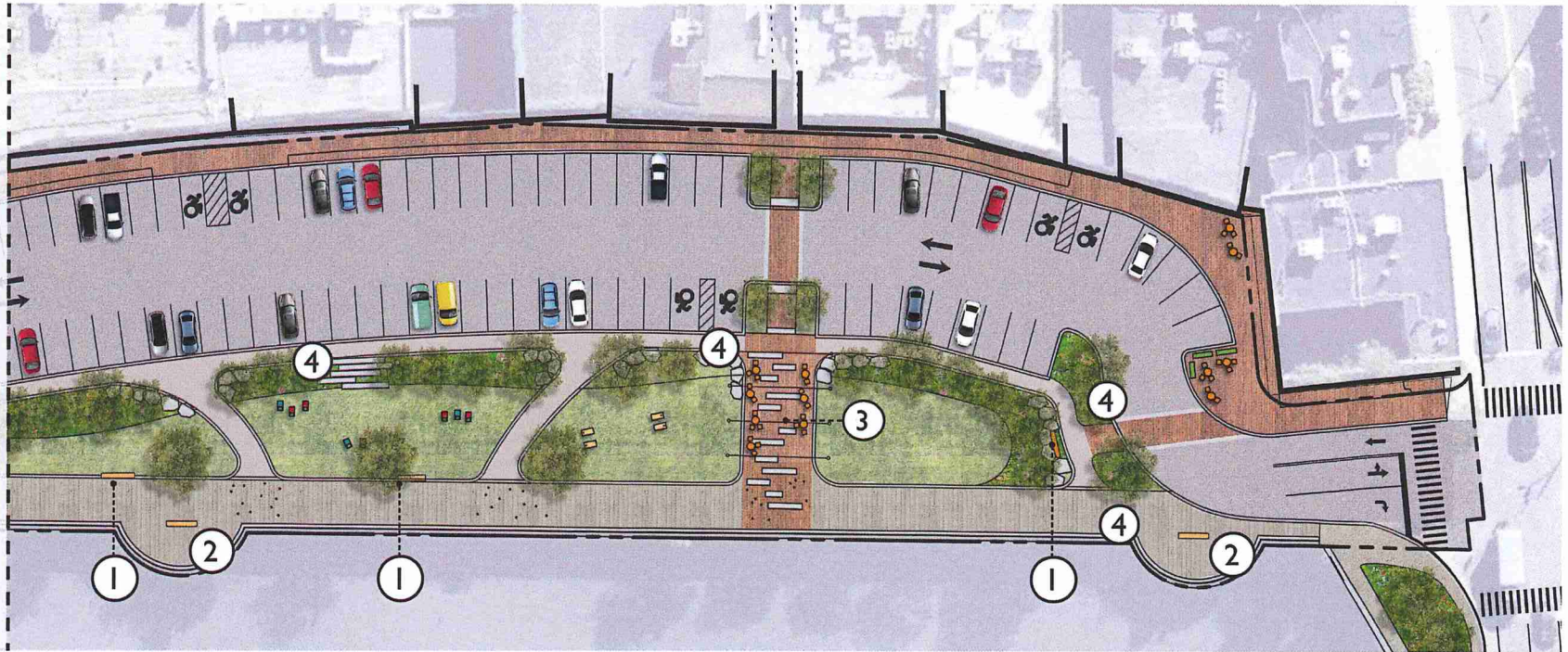
3

LITTER/ RECYCLING



4

SEE SITE FURNISHINGS (1)



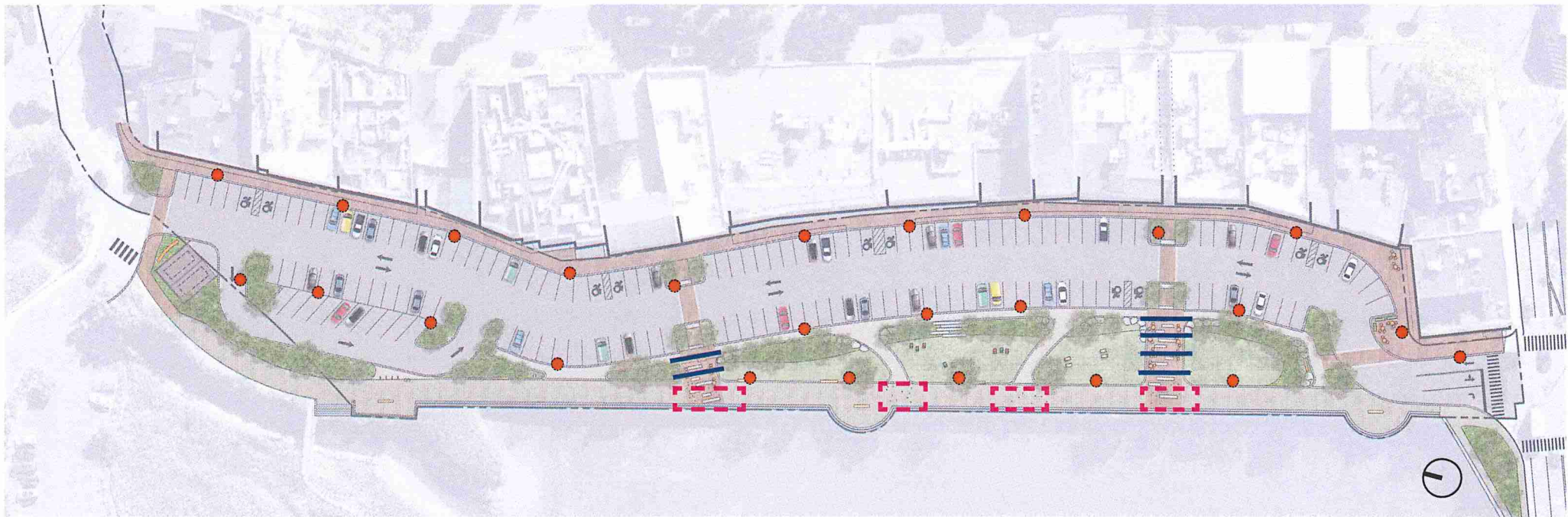
AREA LIGHT



STRING LIGHT



ACCENT LIGHT



GRANITE BLOCKS



1



MONUMENTAL SCULPTURE



2



LANDSCAPE ART



3



EDUCATIONAL PANELS



4



ECOLOGICAL ART



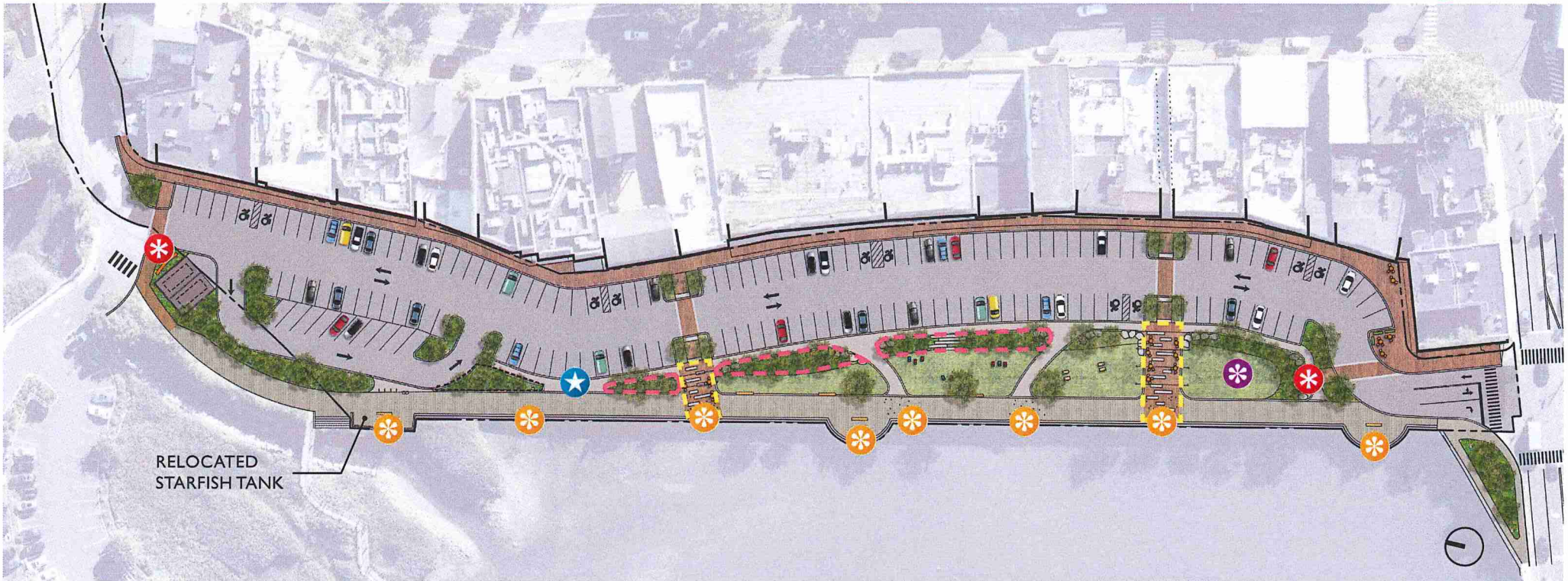
5



ENTRANCE SIGNAGE



6



RELOCATED
STARFISH TANK



