

Board of Selectmen Special Meeting
September 30, 2020
Notice & Agenda

Notice is hereby given that the Westport Board of Selectmen will hold a special public meeting on Wednesday, September 30, 2020 at 7:00 PM. Pursuant to the Governor's Executive Order No. 7B, there is no physical location for this meeting. It will be held electronically, live streamed on www.westportct.gov, and broadcast on Westport's Optimum Government Access Channel 79 and Frontier Channel 6020. Emails to the Board of Selectmen *prior* to the meeting may be sent to selectman@westportct.gov. Comments to be read *during* the public comment portion of the meeting may be emailed to BOscomments@westportct.gov. Best efforts will be made to read public comments if they are received during the public comment period, include your full name, and are brief; no longer than 3 minutes.

AGENDA

To consider proposed alternatives for disposition of the excess fill associated with the expansion and site improvements at the Westport Center for Senior Activities (WCSA), and as appropriate, to take such action as the meeting may determine to select one alternative to pursue with the Planning & Zoning Commission.

Associated reports are available for review on the Town's website at <https://www.westportct.gov/government/baron-s-south-stockpile-2019>

James S. Marpe, First Selectman
September 25, 2020

It is the policy of the Town of Westport that all Town-sponsored public meetings and events are accessible to people with disabilities. If you need assistance in participating in a meeting or event due to a disability as defined under the Americans with Disabilities Act, please contact Westport's ADA Coordinator at 203-341-1043 or eflug@westportct.gov at least three (3) business days prior to the scheduled meeting or event to request an accommodation.

ALTERNATIVE 1 APPROXIMATE EXCAVATION AND FILL QUANTITIES

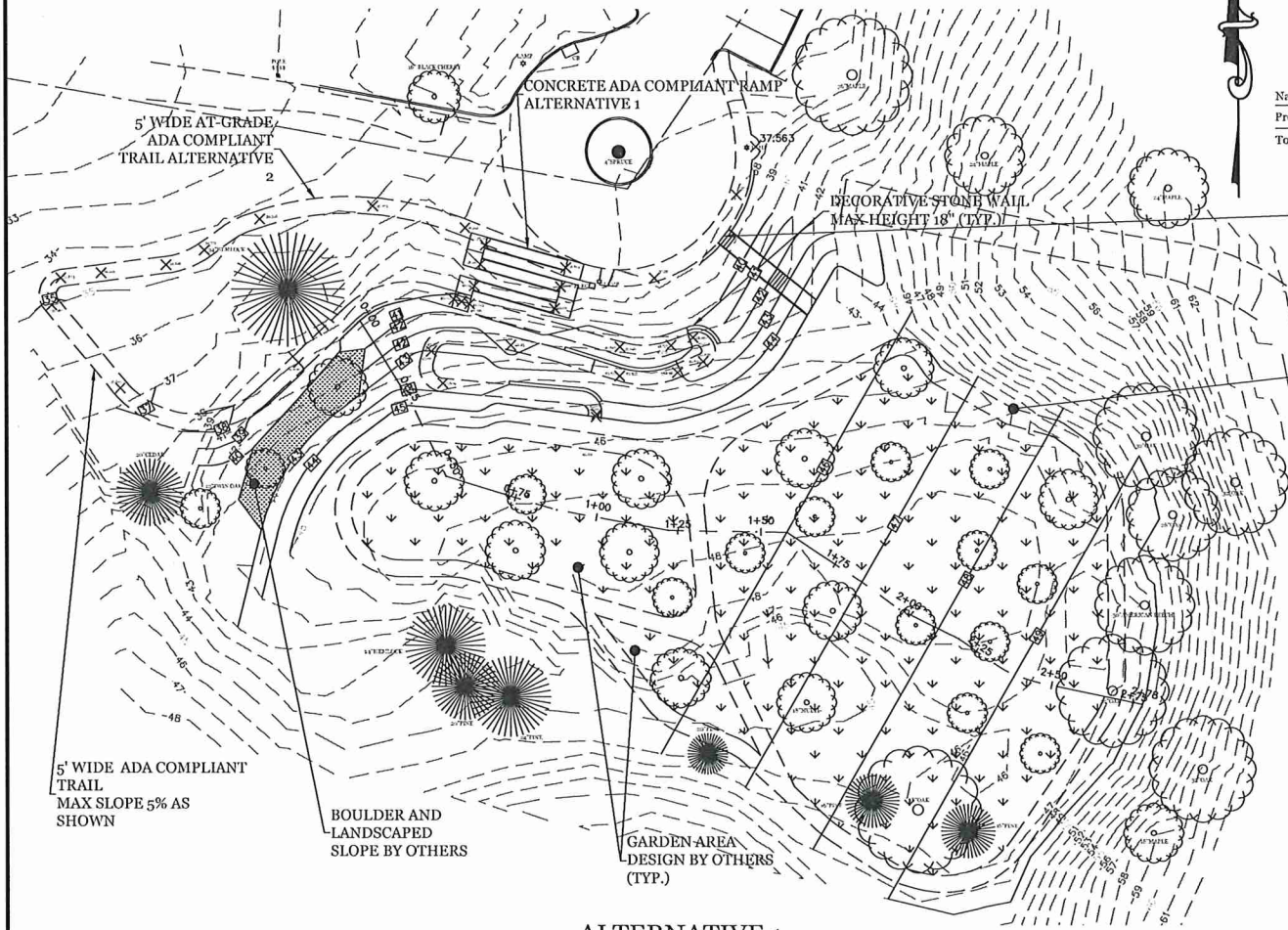
Name	Cut Factor	Fill Factor	2d Area	Cut	Fill	Net
Proposed Conditions vs. Existing with Fill	1.000	1.000	102305.22 Sq. Ft.	769.81 Cu. Yd.	1070.09 Cu. Yd.	300.28 Cu. Yd.<Fill>
Totals			102305.22 Sq. Ft.	769.81 Cu. Yd.	1070.09 Cu. Yd.	300.28 Cu. Yd.<Fill>

OPTIONAL
CONCRETE
STAIRCASE
(TYP.)

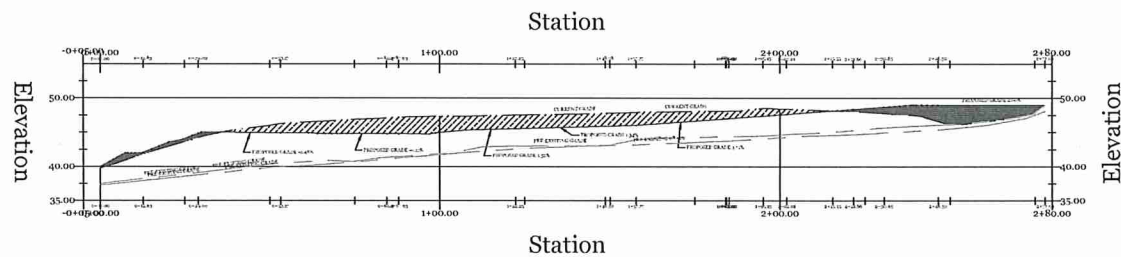
APPROXIMATE EXISTING STOCKPILE MATERIAL QUANTITY

Cut/Fill Summary						
Name	Cut Factor	Fill Factor	2d Area	Cut	Fill	Net
Fill Pile	1.000	1.000	26466.87 Sq. Ft.	0.00 Cu. Yd.	3141.89 Cu. Yd.	3141.89 Cu. Yd.<Fill>
Totals			26466.87 Sq. Ft.	0.00 Cu. Yd.	3141.89 Cu. Yd.	3141.89 Cu. Yd.<Fill>

5' WIDE ADA
COMPLIANT WALK
(TYP.)



ALTERNATIVE 1
SCALE: 1" = 20'



**PROFILE OF REGRADED GARDEN
AREA**
VERT. SCALE: 1" = 10'
HORIZ. SCALE: 1" = 20'

Stockpile Restoration Plan - Alternative 1
PREPARED FOR
TOWN OF WESTPORT: SENIOR CENTER
21 Imperial Avenue
WESTPORT, CONNECTICUT
September 23, 2020

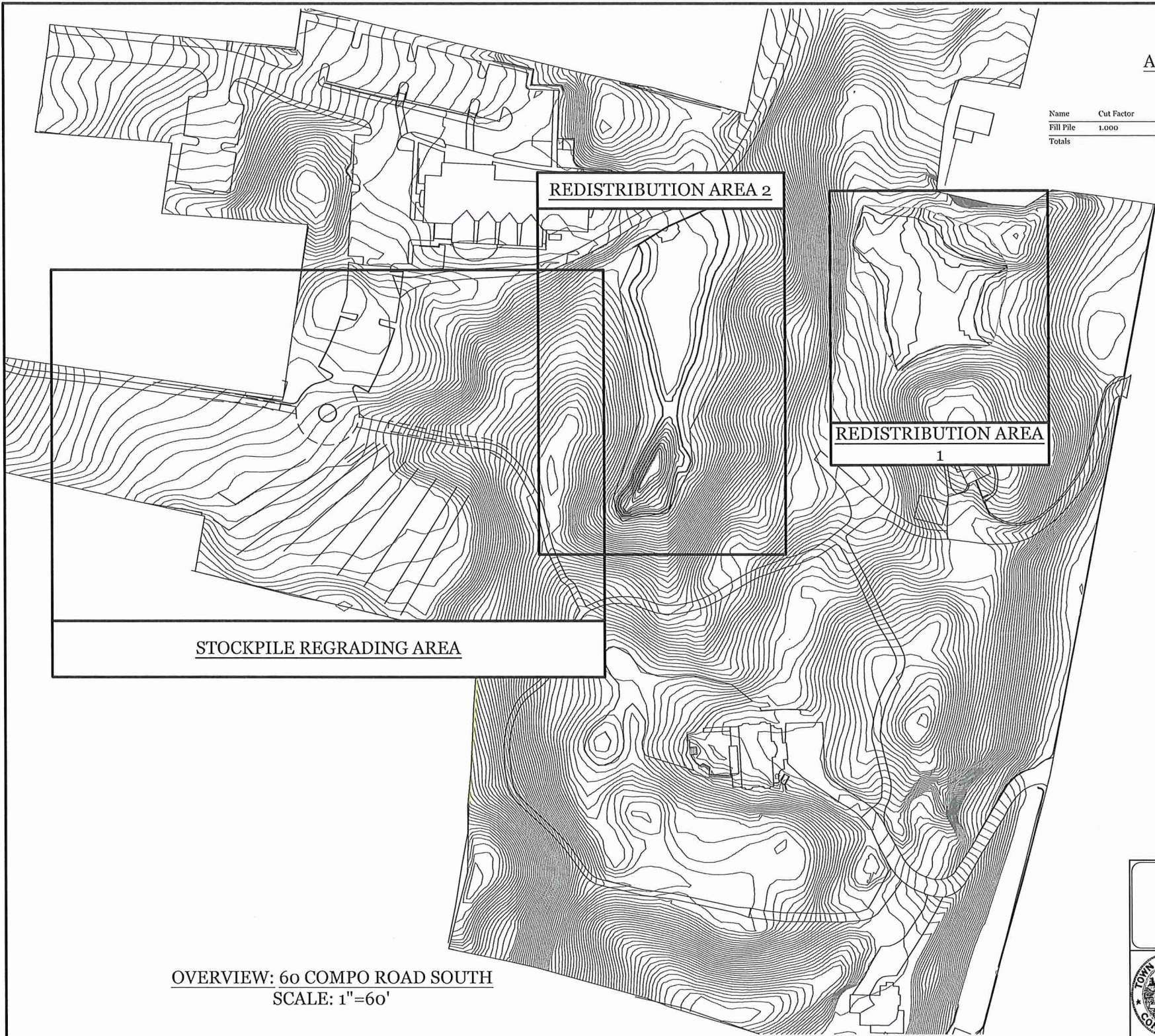
	TOWN OF WESTPORT		PROJ. No.: 2019-24	DATE: 09/23/2020
	DEPARTMENT OF PUBLIC WORKS		DRAWN BY: ASM	REV: 1-1
	ENGINEERING DIVISION		CHECKED BY:	SHEET: 1 OF 1
	SCALE: 1" = 20'			

TOWN HALL, 110 MYRTLE AVENUE
WESTPORT CONNECTICUT 06890
203.341.1120
(P) 203.454.5783
www.westportct.gov

DRAWING NAME: 2017-14 MYRTLE AVE SIDEWALKS DP 2.DWG


APPROXIMATE EXISTING STOCKPILE
MATERIAL QUANTITY

Name	Cut Factor	Fill Factor	2d Area	Cut	Fill	Net
Fill Pile	1.000	1.000	26466.87 Sq. Ft.	0.00 Cu. Yd.	3141.89 Cu. Yd.	3141.89 Cu. Yd.<Fill>
Totals			26466.87 Sq. Ft.	0.00 Cu. Yd.	3141.89 Cu. Yd.	3141.89 Cu. Yd.<Fill>



OVERVIEW: 60 COMPO ROAD SOUTH
SCALE: 1"=60'

Redistribution Plan - Alternative 2
PREPARED FOR
TOWN OF WESTPORT: SENIOR CENTER
21 Imperial Avenue
WESTPORT, CONNECTICUT
September 23, 2020

	TOWN OF WESTPORT		PROJ. No.: 2019-24	DATE: 09/23/2020
	DEPARTMENT OF PUBLIC WORKS		DRAWN BY: ASM	REV: -/-
	ENGINEERING DIVISION		CHECKED BY:	SHEET: 1 OF 4
	TOWN HALL, 110 MYRTLE AVENUE WESTPORT CONNECTICUT 06890 203.341.1120 (f) 203.454.5783 www.westportct.gov		SCALE: AS NOTED	
DRAWING NAME: SENIOR CENTER ALTERNATIVE 2.DWG				

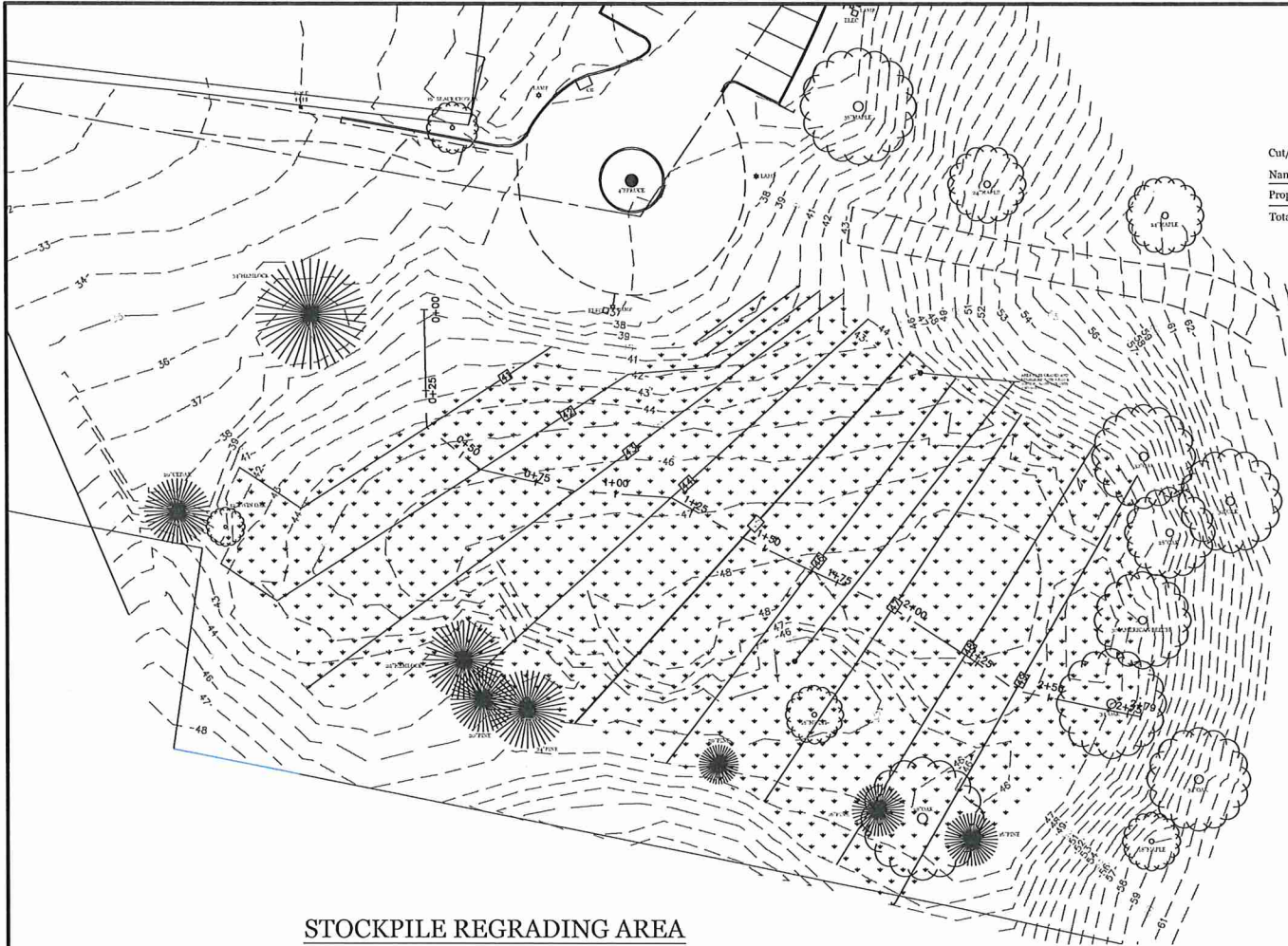
**APPROXIMATE STOCKPILE AREA
REGRADING QUANTITY**

Cut/Fill Summary

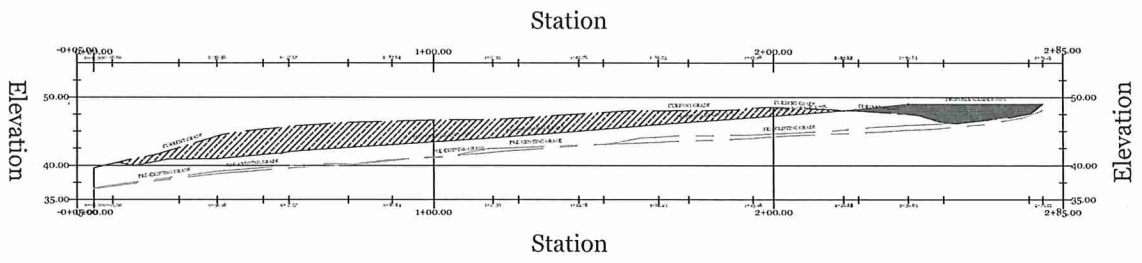
Name	Cut Factor	Fill Factor	2d Area	Cut	Fill	Net
Proposed Conditions 2 vs. Ex with Fill	1.000	1.000	102305.29 Sq. Ft.	1586.12 Cu. Yd.	819.81 Cu. Yd.	766.31 Cu. Yd.<Cut>
Totals			102305.29 Sq. Ft.	1586.12 Cu. Yd.	819.81 Cu. Yd.	766.31 Cu. Yd.<Cut>

**APPROXIMATE EXISTING STOCKPILE
MATERIAL QUANTITY**

Name	Cut Factor	Fill Factor	2d Area	Cut	Fill	Net
Fill Pile	1.000	1.000	26466.87 Sq. Ft.	0.00 Cu. Yd.	3141.89 Cu. Yd.	3141.89 Cu. Yd.<Fill>
Totals			26466.87 Sq. Ft.	0.00 Cu. Yd.	3141.89 Cu. Yd.	3141.89 Cu. Yd.<Fill>



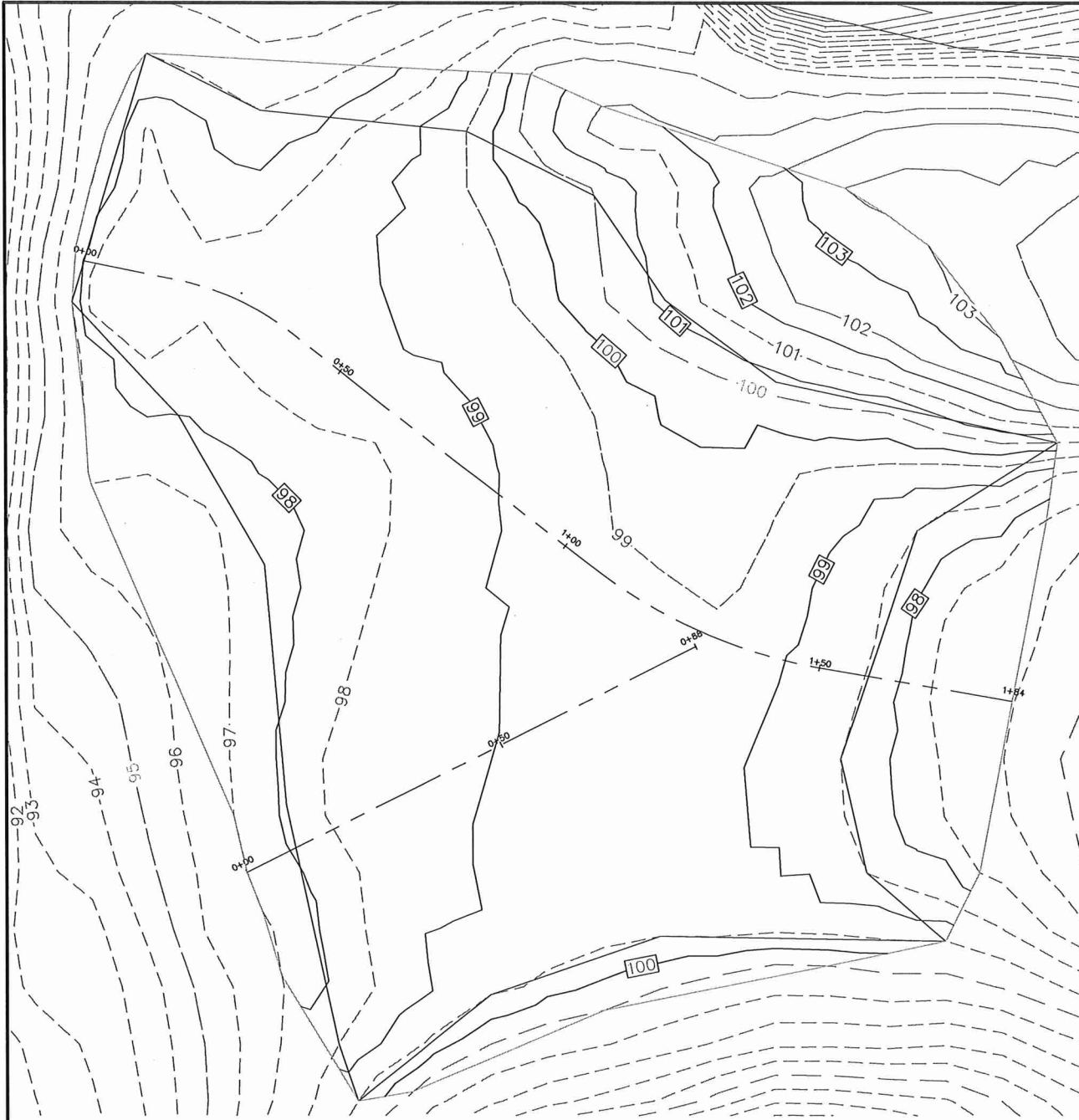
**STOCKPILE REGRADING AREA
SCALE: 1"=20'**



**PROFILE OF STOCKPILE REGRADING
AREA
VERT. SCALE: 1" = 10'
HORIZ. SCALE: 1" = 20'**

Stockpile Regrading Plan - Alternative 2
PREPARED FOR
TOWN OF WESTPORT: SENIOR CENTER
21 Imperial Avenue
WESTPORT, CONNECTICUT
September 23, 2020

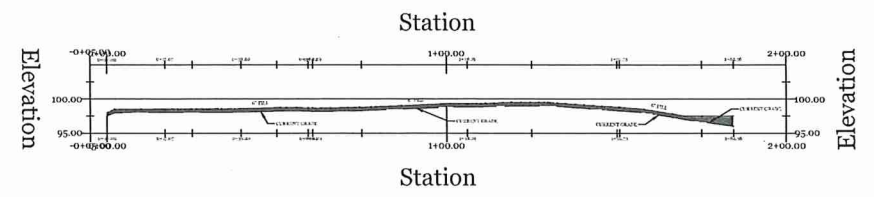
	TOWN OF WESTPORT	PROJ. No.: 2019-24	DATE: 09/23/2020
	DEPARTMENT OF PUBLIC WORKS ENGINEERING DIVISION	DRAWN BY: ASM	REV: -/-
TOWN HALL, 110 MYRTLE AVENUE WESTPORT CONNECTICUT 06880 203.341.1120 (f) 203.454.9783 www.westportct.gov		CHECKED BY:	SHEET: 2 OF 4
		SCALE: AS NOTED	
		DRAWING NAME: SENIOR CENTER ALTERNATIVE 2.DWG	



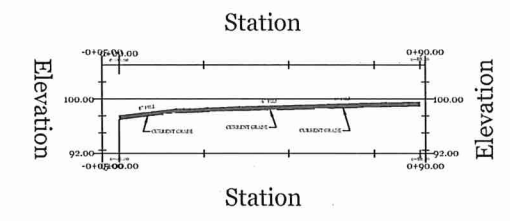
REDISTRIBUTION AREA 1
SCALE: 1"=10'

**APPROXIMATE REDISTRIBUTION
AREA 1 QUANTITY**

Cut/Fill Summary						
Name	Cut Factor	Fill Factor	2d Area	Cut	Fill	Net
Regraded Area 1 Quantities	1.000	1.000	23468.78 Sq. Ft.	0.00 Cu. Yd.	457.11 Cu. Yd.	457.11 Cu. Yd.<Fill>
Totals			23468.78 Sq. Ft.	0.00 Cu. Yd.	457.11 Cu. Yd.	457.11 Cu. Yd.<Fill>

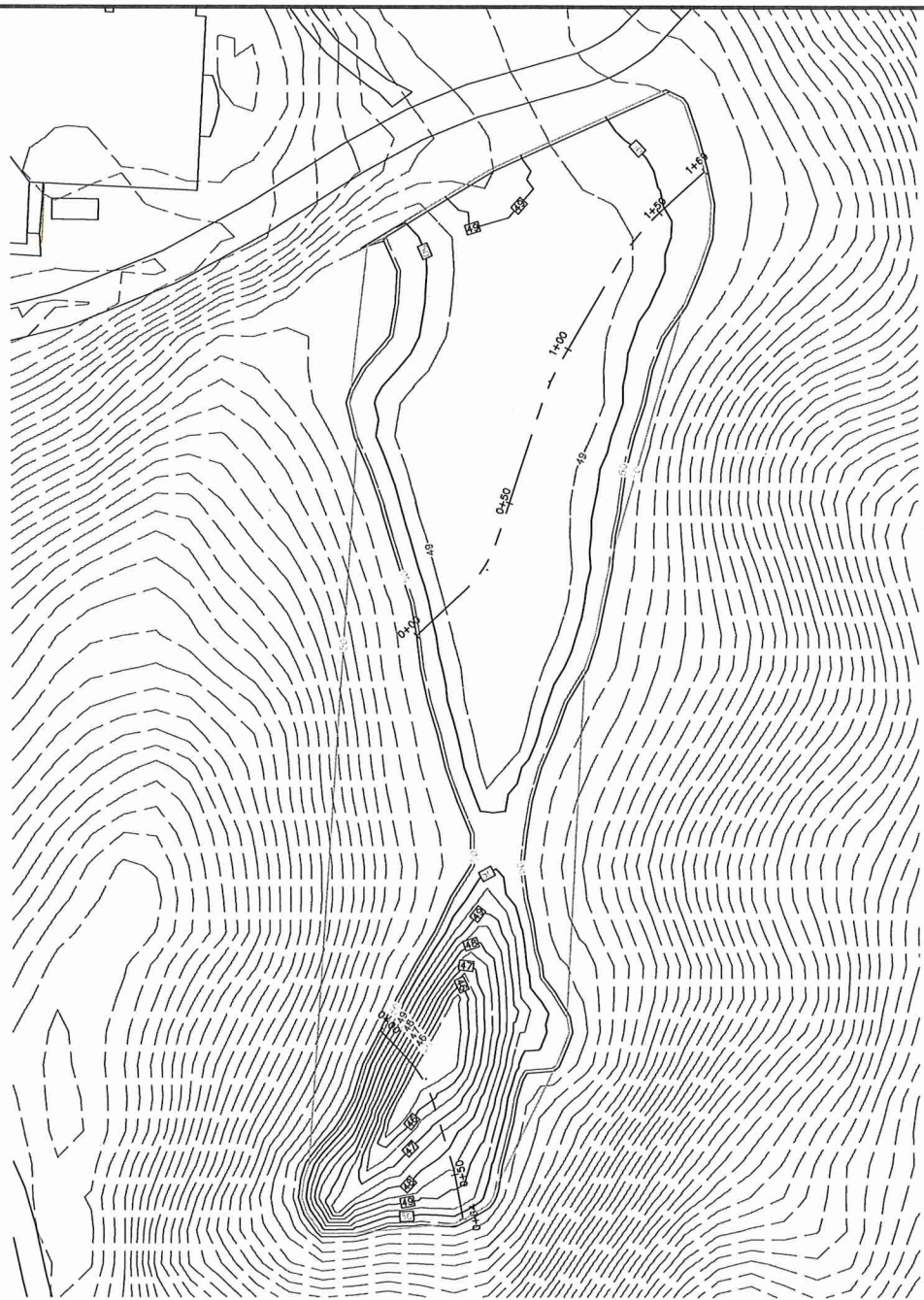


**PROFILE OF REDISTRIBUTION AREA 1
ALIGNMENT 1**
VERT. SCALE: 1" = 10'
HORIZ. SCALE: 1" = 20'



**PROFILE OF REDISTRIBUTION AREA 1
ALIGNMENT 2**
VERT. SCALE: 1" = 10'
HORIZ. SCALE: 1" = 20'

Redistribution Area 1 - Alternative 2 PREPARED FOR TOWN OF WESTPORT: SENIOR CENTER 21 Imperial Avenue WESTPORT, CONNECTICUT September 23, 2020			
	TOWN OF WESTPORT DEPARTMENT OF PUBLIC WORKS ENGINEERING DIVISION	PROJ. No.: 2019-24 DATE: 09/23/2020 DRAWN BY: ASM REV: -/- CHECKED BY: SHEET: 3 OF 4 SCALE: AS NOTED	TOWN HALL, 110 MYRTLE AVENUE WESTPORT CONNECTICUT 06880 203.341.1120 (f) 203.454.5783 www.westportct.gov
	DRAWING NAME: SENIOR CENTER ALTERNATIVE 2.DWG		

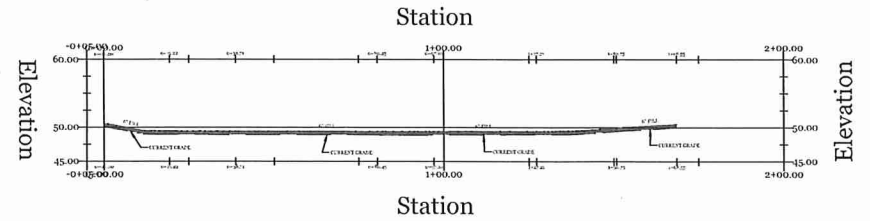


REDISTRIBUTION AREA 2
SCALE: 1"=20'

**APPROXIMATE REDISTRIBUTION
AREA 2 QUANTITY**

Cut/Fill Summary

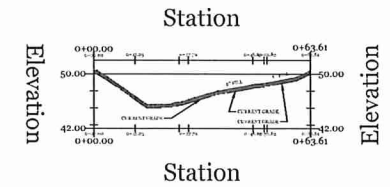
Name	Cut Factor	Fill Factor	2d Area	Cut	Fill	Net
Regraded Area 2 Quantities	1.000	1.000	25977.79 Sq. Ft.	0.00 Cu. Yd.	481.07 Cu. Yd.	481.07 Cu. Yd.<Fill>
Totals			25977.79 Sq. Ft.	0.00 Cu. Yd.	481.07 Cu. Yd.	481.07 Cu. Yd.<Fill>



PROFILE OF REDISTRIBUTION AREA 2

ALIGNMENT 1

VERT. SCALE: 1" = 10'
HORIZ. SCALE: 1" = 20'



PROFILE OF REDISTRIBUTION AREA 2

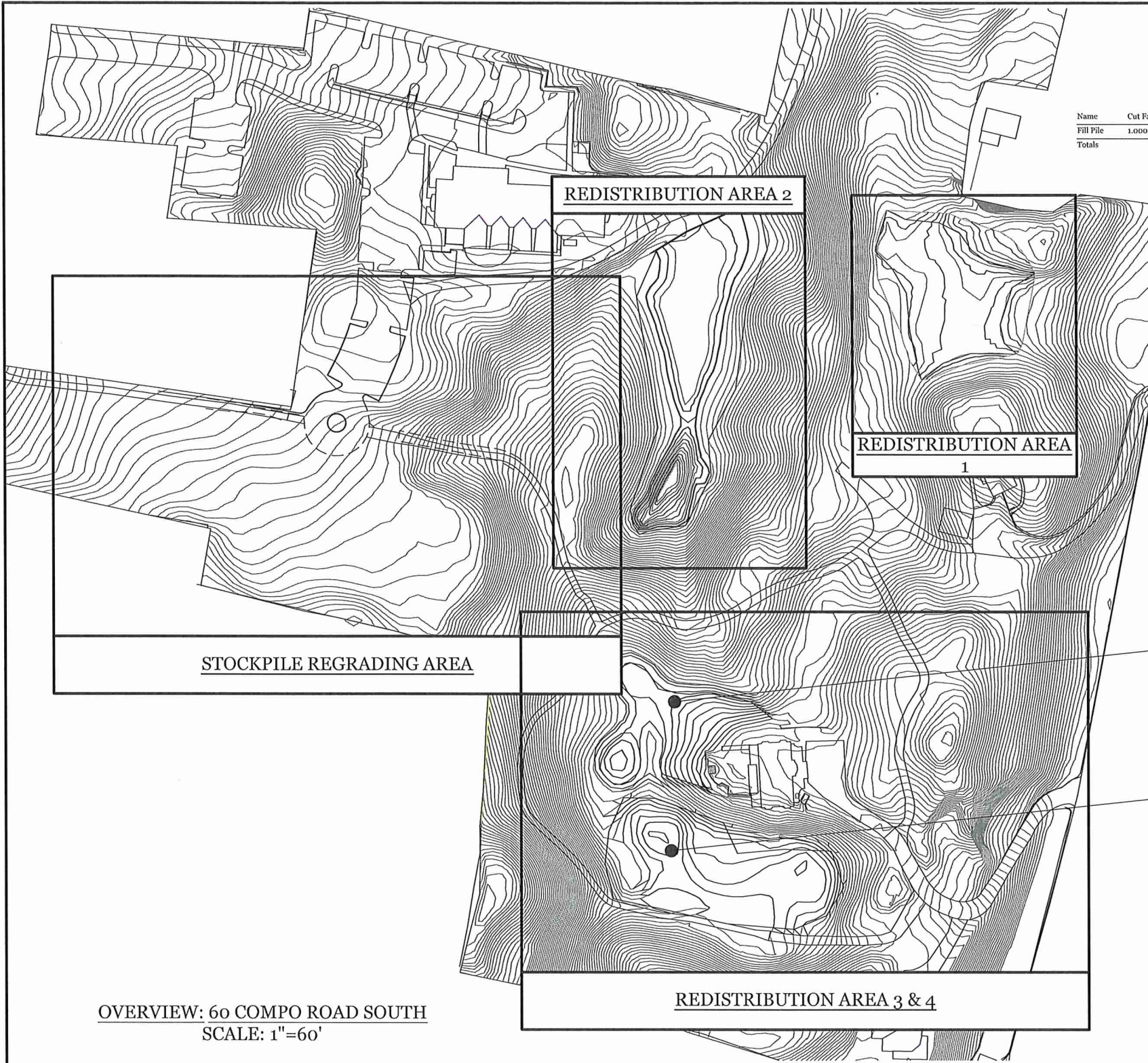
ALIGNMENT 2

VERT. SCALE: 1" = 10'
HORIZ. SCALE: 1" = 20'

Redistribution Area 2 - Alternative 2 PREPARED FOR TOWN OF WESTPORT: SENIOR CENTER 21 Imperial Avenue WESTPORT, CONNECTICUT September 23, 2020			
	TOWN OF WESTPORT DEPARTMENT OF PUBLIC WORKS ENGINEERING DIVISION		PROJ. No.: 2019-24 DATE: 09/23/2020 DRAWN BY: ASM REV: 1 CHECKED BY: SHEET: 4 OF 4 SCALE: AS NOTED
	TOWN HALL, 110 MYRTLE AVENUE WESTPORT CONNECTICUT 06880 203.341.1120 (f) 203.454.5783 www.westportct.gov		DRAWING NAME: SENIOR CENTER ALTERNATIVE 2.DWG

**APPROXIMATE EXISTING STOCKPILE
MATERIAL QUANTITY**

Name	Cut Factor	Fill Factor	2d Area	Cut	Fill	Net
Fill Pile	1.000	1.000	26466.87 Sq. Ft.	0.00 Cu. Yd.	3141.89 Cu. Yd.	3141.89 Cu. Yd.<Fill>
Totals			26466.87 Sq. Ft.	0.00 Cu. Yd.	3141.89 Cu. Yd.	3141.89 Cu. Yd.<Fill>



STOCKPILE REGRADING AREA

REDISTRIBUTION AREA 2

REDISTRIBUTION AREA 1


1

REDISTRIBUTION AREA 4

REDISTRIBUTION AREA 3

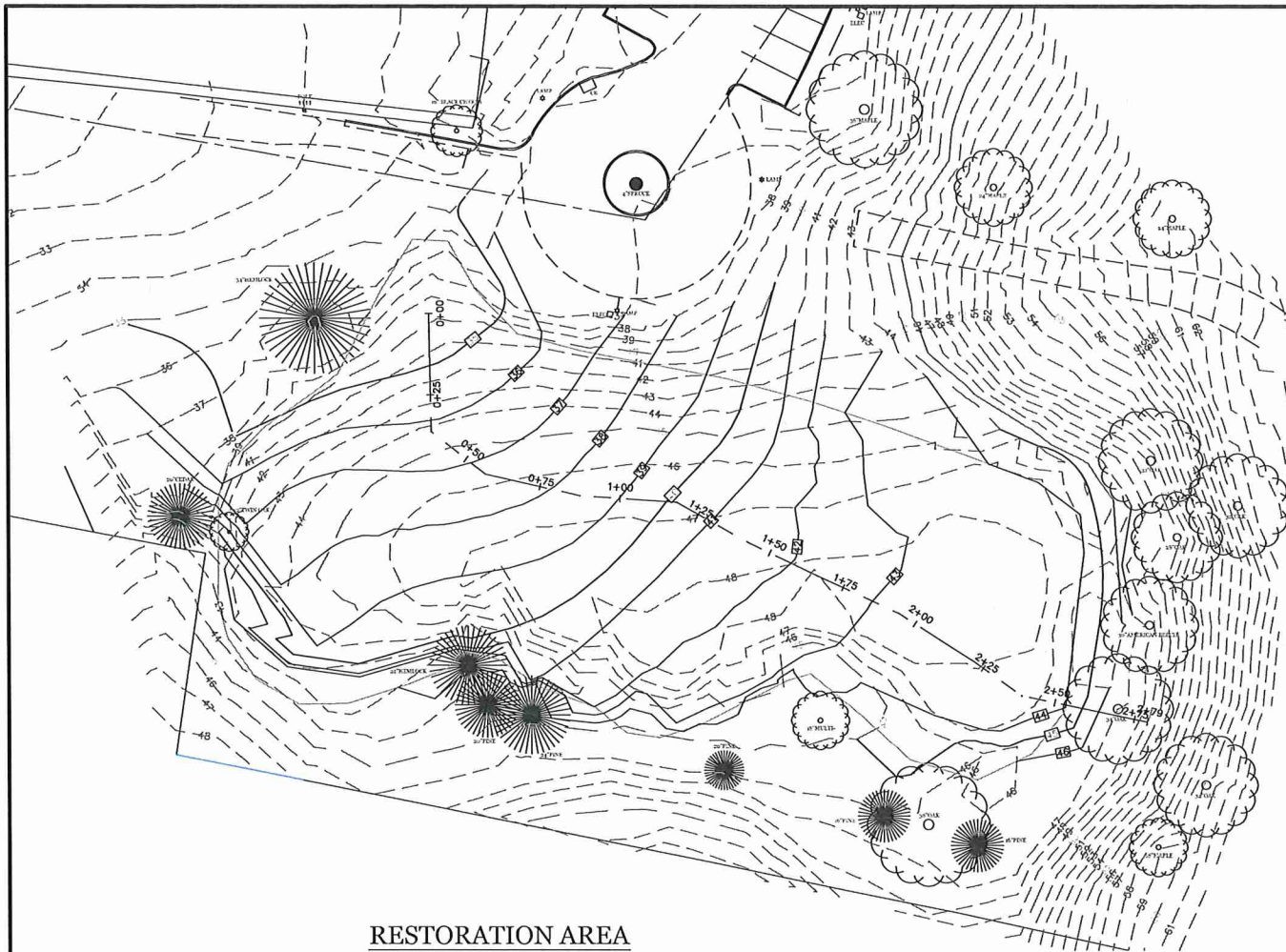
REDISTRIBUTION AREA 3 & 4

OVERVIEW: 60 COMPO ROAD SOUTH
SCALE: 1"=60'

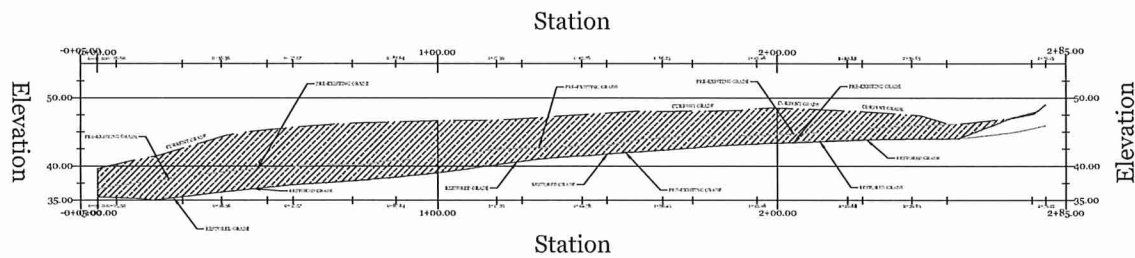
Restoration and Redistribution Plan - Alternative 3 PREPARED FOR TOWN OF WESTPORT: SENIOR CENTER 21 Imperial Avenue WESTPORT, CONNECTICUT September 23, 2020			
	TOWN OF WESTPORT		PROJ. No.: 2019-24
	DEPARTMENT OF PUBLIC WORKS		DATE: 09/23/2020
	ENGINEERING DIVISION		DRAWN BY: ASM
TOWN HALL, 110 MYRTLE AVENUE WESTPORT CONNECTICUT 06880 203.341.1120 (F) 203.454.9783 www.westportct.gov		CHECKED BY:	REV: -/-
		SCALE: AS NOTED	SHEET: 1 OF 6
		DRAWING NAME: SENIOR CENTER ALTERNATIVE 3.DWG	

**APPROXIMATE RESTORATION AREA
QUANTITY**

Name	Cut Factor	Fill Factor	2d Area	Cut	Fill	Net
Fill Pile	1.000	1.000	26466.87 Sq. Ft.	0.00 Cu. Yd.	3141.89 Cu. Yd.	3141.89 Cu. Yd. <Fill>
Totals			26466.87 Sq. Ft.	0.00 Cu. Yd.	3141.89 Cu. Yd.	3141.89 Cu. Yd. <Fill>

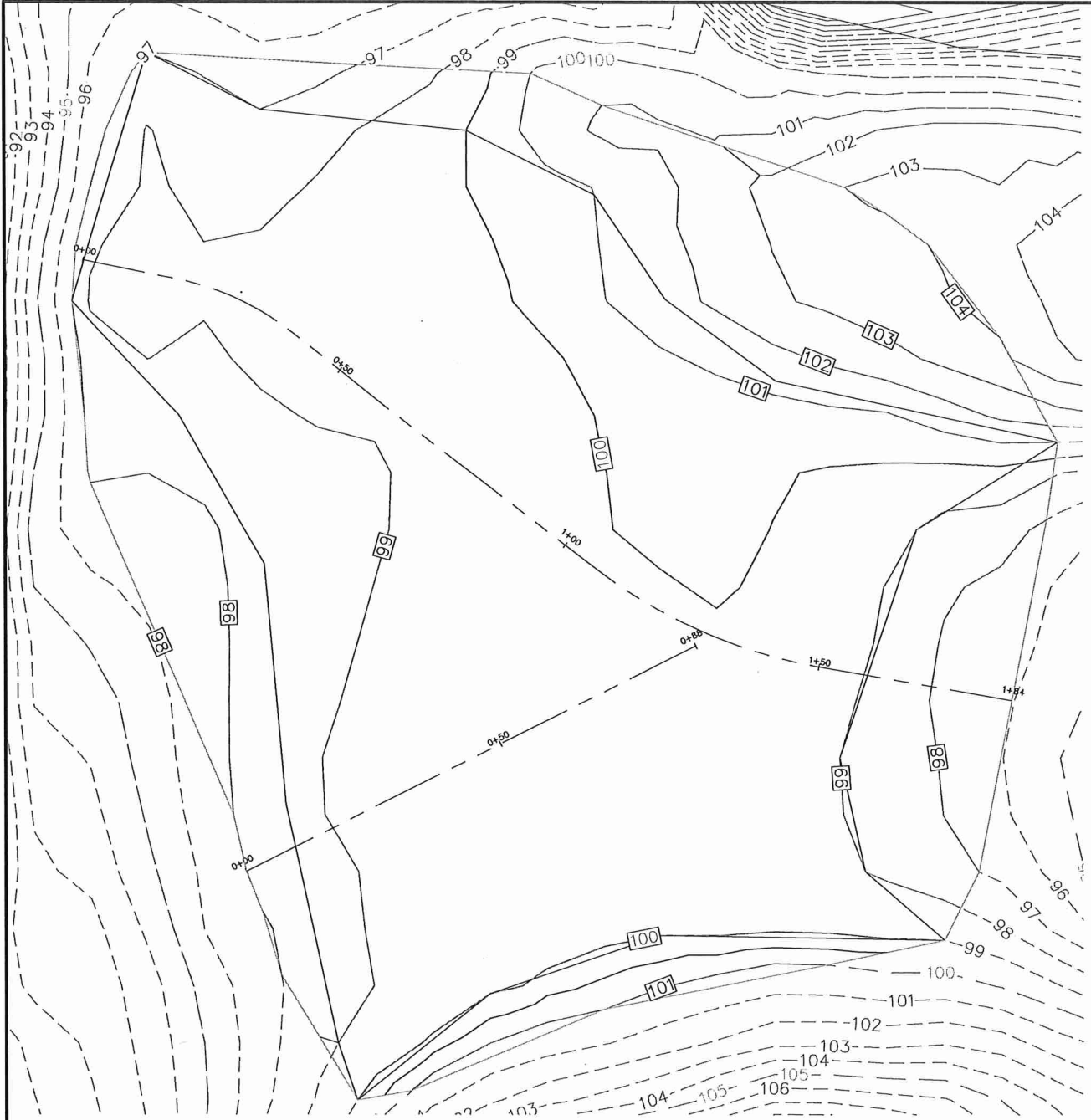


**RESTORATION AREA
SCALE: 1"=20'**



**PROFILE OF RESTORATION AREA
VERT. SCALE: 1" = 10'
HORIZ. SCALE: 1" = 20'**

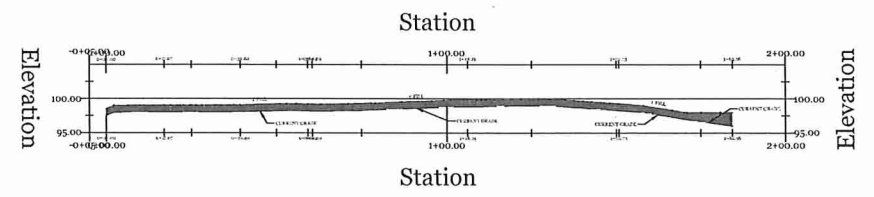
Stockpile Restoration Plan - Alternative 3 PREPARED FOR TOWN OF WESTPORT; SENIOR CENTER 21 Imperial Avenue WESTPORT, CONNECTICUT September 23, 2020		
	TOWN OF WESTPORT DEPARTMENT OF PUBLIC WORKS ENGINEERING DIVISION	PROJ. No.: 2019-24 DATE: 09/23/2020 DRAWN BY: ASM REV: --- CHECKED BY: SHEET: 2 OF 6 SCALE: AS NOTED
	TOWN HALL, 110 MYRTLE AVENUE WESTPORT CONNECTICUT 06880 203.341.1120 (T) 203.454.5783 www.westport.gov	DRAWING NAME: SENIOR CENTER ALTERNATIVE 3.DWG



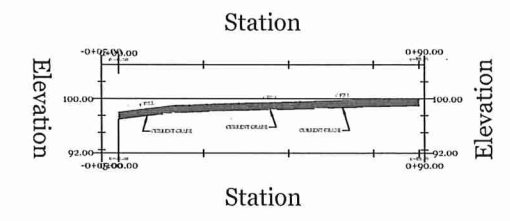
REDISTRIBUTION AREA 1
SCALE: 1"=10'

**APPROXIMATE REDISTRIBUTION
AREA 1 QUANTITY**

Cut/Fill Summary						
Name	Cut Factor	Fill Factor	2d Area	Cut	Fill	Net
Regraded Area 1 Quantities	1.000	1.000	23468.78 Sq. Ft.	0.00 Cu. Yd.	891.71 Cu. Yd.	891.71 Cu. Yd.<Fill>
Totals			23468.78 Sq. Ft.	0.00 Cu. Yd.	891.71 Cu. Yd.	891.71 Cu. Yd.<Fill>

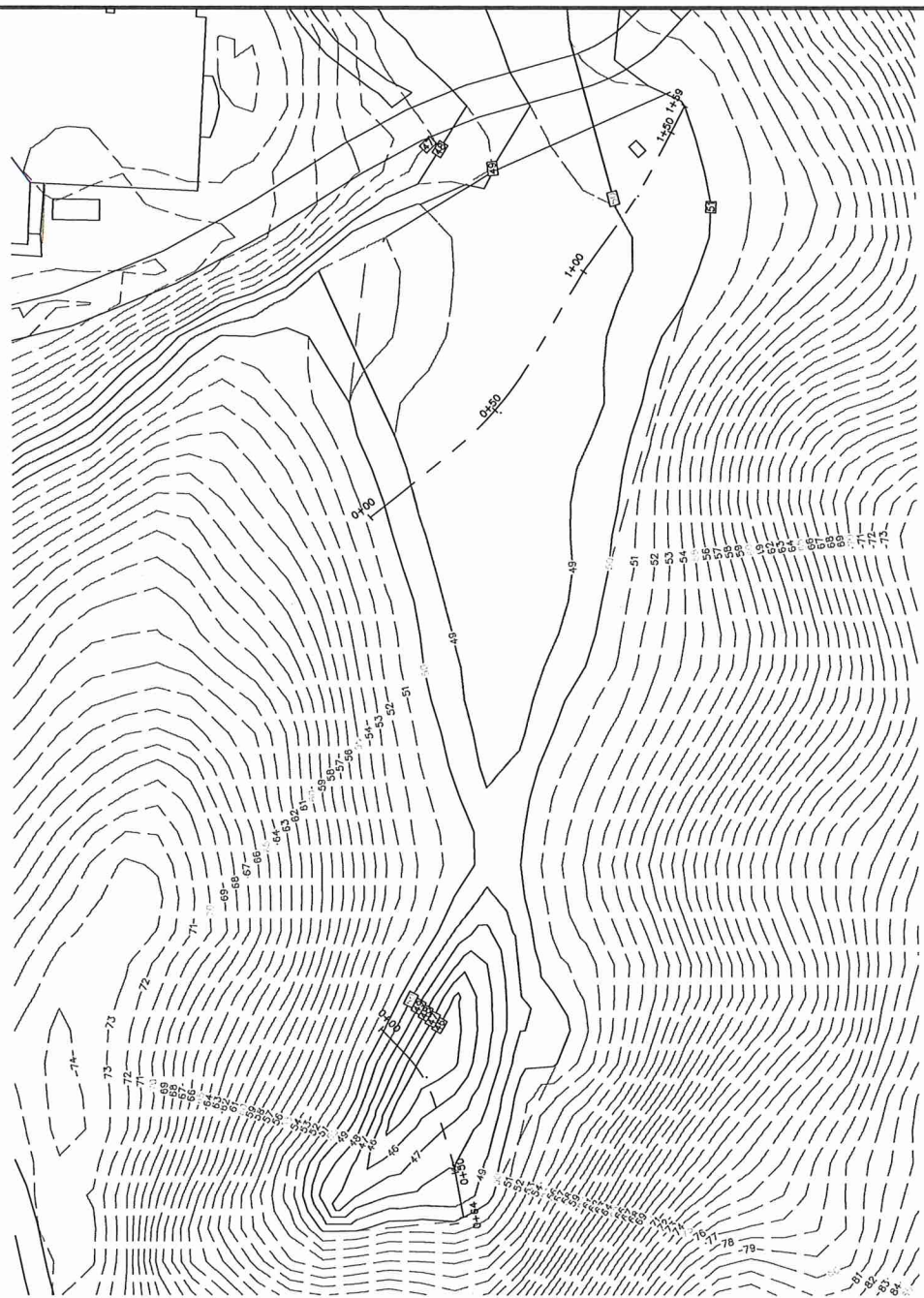


**PROFILE OF REDISTRIBUTION AREA 1
ALIGNMENT 1**
VERT. SCALE: 1" = 10'
HORIZ. SCALE: 1" = 20'



**PROFILE OF REDISTRIBUTION AREA 1
ALIGNMENT 2**
VERT. SCALE: 1" = 10'
HORIZ. SCALE: 1" = 20'

Redistribution Area 1 - Alternative 3 PREPARED FOR TOWN OF WESTPORT: SENIOR CENTER 21 Imperial Avenue WESTPORT, CONNECTICUT September 23, 2020			
	TOWN OF WESTPORT DEPARTMENT OF PUBLIC WORKS ENGINEERING DIVISION	PROJ. No.: 2019-24 DATE: 09/23/2020 DRAWN BY: ASM REV: --- CHECKED BY: SHEET: 3 OF 6 SCALE: AS NOTED	TOWN HALL, 110 MYRTLE AVENUE WESTPORT CONNECTICUT 06880 203.341.1120 (f) 203.454.5783 www.westportct.gov
	DRAWING NAME: SENIOR CENTER ALTERNATIVE 3.DWG		



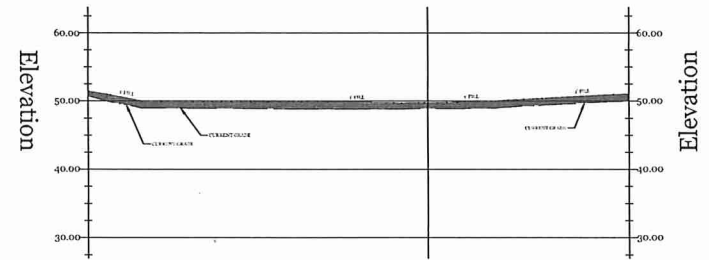
REDISTRIBUTION AREA 2
SCALE: 1" = 20'



**APPROXIMATE REDISTRIBUTION
AREA 2 QUANTITY**

Cut/Fill Summary

Name	Cut Factor	Fill Factor	ad Area	Cut	Fill	Net
Regraded Area 2 Quantities	1.000	1.000	108104.07 Sq. Ft.	19.09 Cu. Yd.	849.73 Cu. Yd.	830.64 Cu. Yd.<Fill>
Totals			108104.07 Sq. Ft.	19.09 Cu. Yd.	849.73 Cu. Yd.	830.64 Cu. Yd.<Fill>

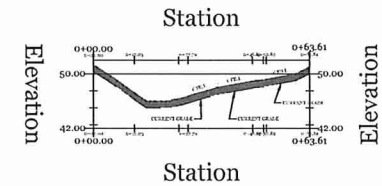


PROFILE OF REDISTRIBUTION AREA 2

ALIGNMENT 1

VERT. SCALE: 1" = 10'

HORIZ. SCALE: 1" = 20'



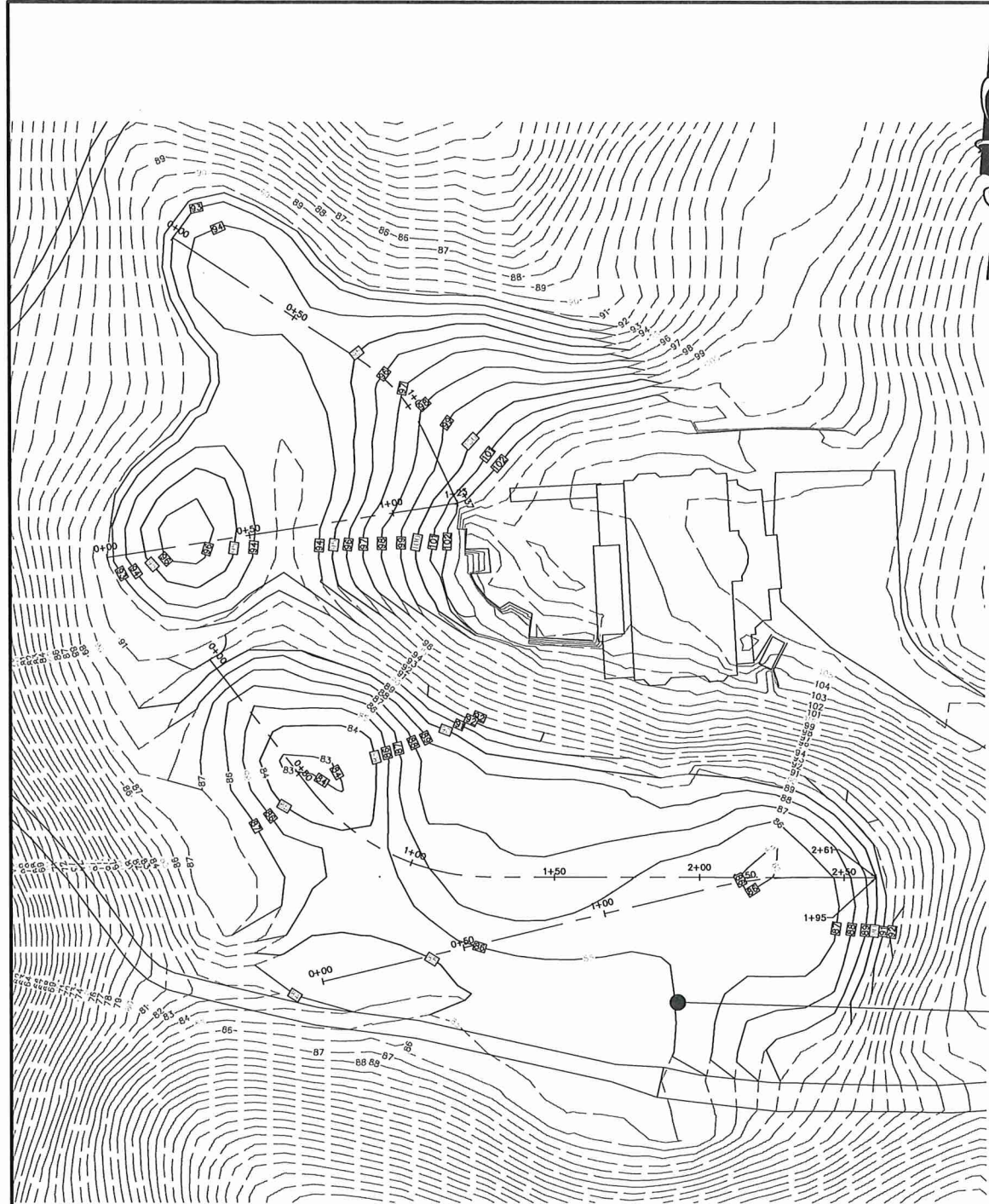
PROFILE OF REDISTRIBUTION AREA 2

ALIGNMENT 2

VERT. SCALE: 1" = 10'

HORIZ. SCALE: 1" = 20'

Redistribution Area 2 - Alternative 3 PREPARED FOR TOWN OF WESTPORT: SENIOR CENTER 21 Imperial Avenue WESTPORT, CONNECTICUT September 23, 2020			
	TOWN OF WESTPORT DEPARTMENT OF PUBLIC WORKS ENGINEERING DIVISION		PROJ. No.: 2019-24 DATE: 09/23/2020 DRAWN BY: ASM REV: -/- CHECKED BY: SHEET: 4 OF 6 SCALE: AS NOTED
	TOWN HALL, 110 MYRTLE AVENUE WESTPORT CONNECTICUT 06880 203.341.1120 (f) 203.454.5783 www.westportct.gov		DRAWING NAME: SENIOR CENTER ALTERNATIVE 3.DWG

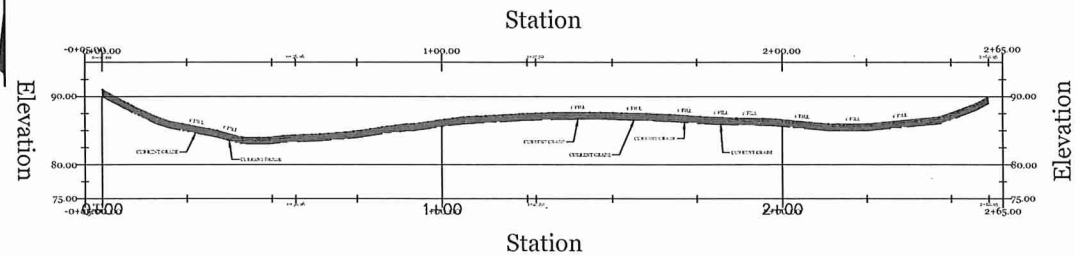


REDISTRIBUTION AREAS 3
SCALE: 1"=20'

**APPROXIMATE REDISTRIBUTION
AREA 3 QUANTITY**

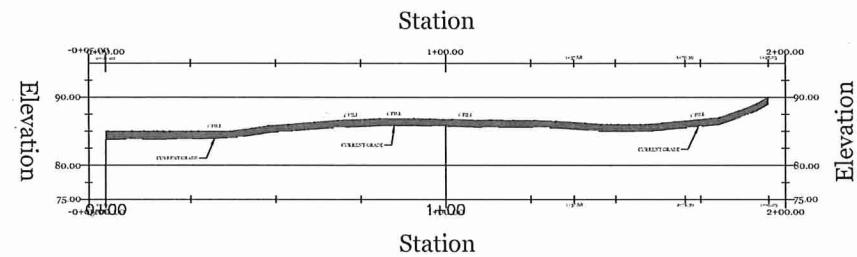
Cut/Fill Summary

Name	Cut Factor	Fill Factor	2d Area	Cut	Fill	Net
Regraded Area 4 Quantity	1.000	1.000	18543.24 Sq. Ft.	106.51 Cu. Yd.	736.54 Cu. Yd.	630.02 Cu. Yd.<Fill>
Totals			18543.24 Sq. Ft.	106.51 Cu. Yd.	736.54 Cu. Yd.	630.02 Cu. Yd.<Fill>



**PROFILE OF REDISTRIBUTION AREA 3
ALIGNMENT 1**

VERT. SCALE: 1" = 10'
HORIZ. SCALE: 1" = 20'

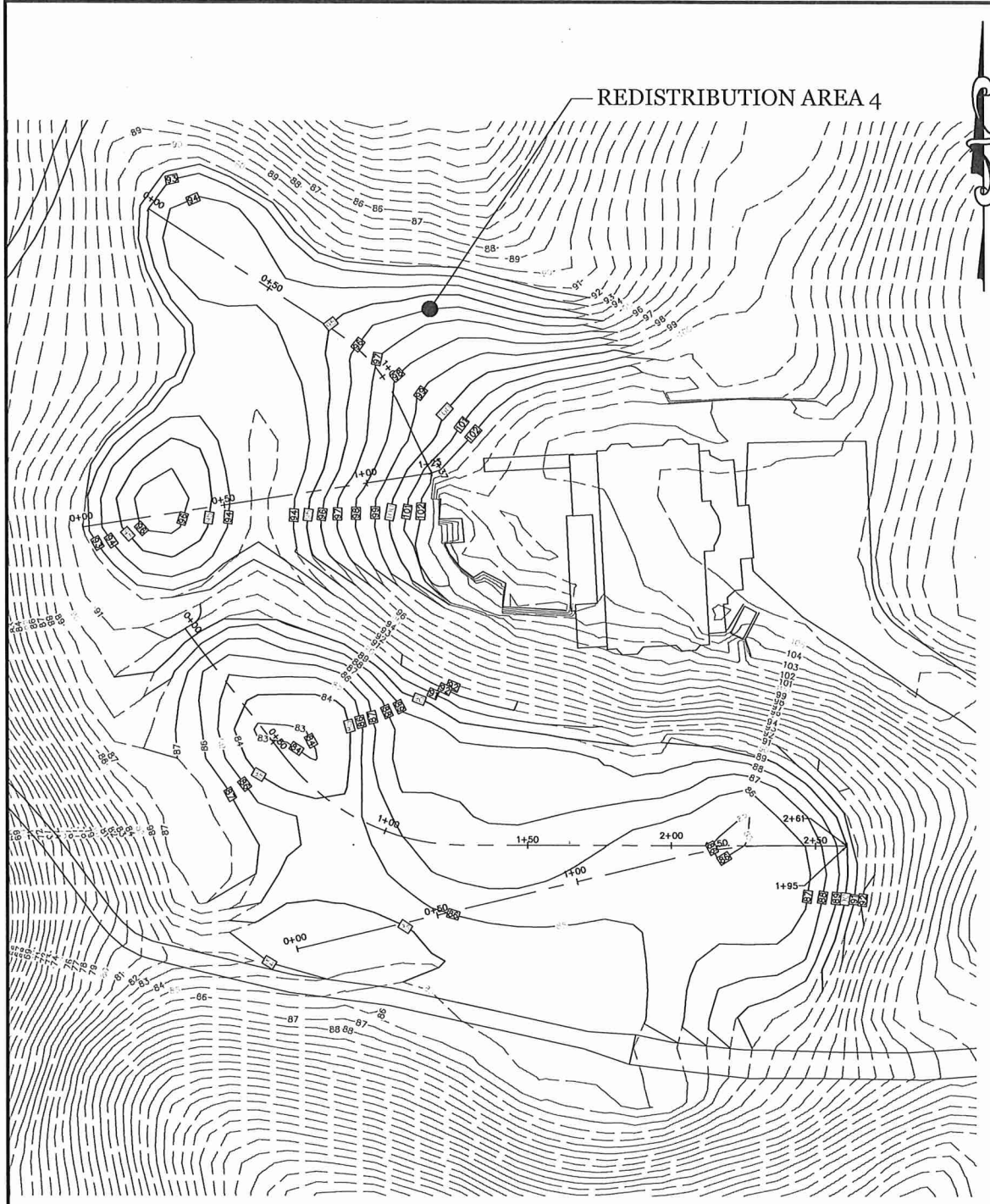


**PROFILE OF REDISTRIBUTION AREA 3
ALIGNMENT 2**

VERT. SCALE: 1" = 10'
HORIZ. SCALE: 1" = 20'

REDISTRIBUTION AREA 3

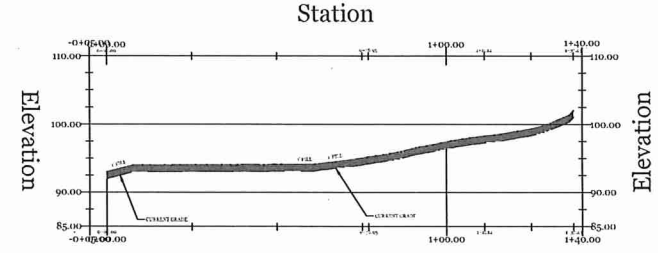
Redistribution Area 3 - Alternative 3 PREPARED FOR TOWN OF WESTPORT: SENIOR CENTER 21 Imperial Avenue WESTPORT, CONNECTICUT September 23, 2020			
	TOWN OF WESTPORT DEPARTMENT OF PUBLIC WORKS ENGINEERING DIVISION		PROJ. No.: 2019-24 DATE: 09/23/2020 DRAWN BY: ASM REV: 1 CHECKED BY: SHEET: 5 OF 6 SCALE: AS NOTED
	TOWN HALL, 110 MYRTLE AVENUE WESTPORT CONNECTICUT 06880 203.341.1120 (f) 203.454.5783 www.westportct.gov		DRAWING NAME: SENIOR CENTER ALTERNATIVE 3.DWG



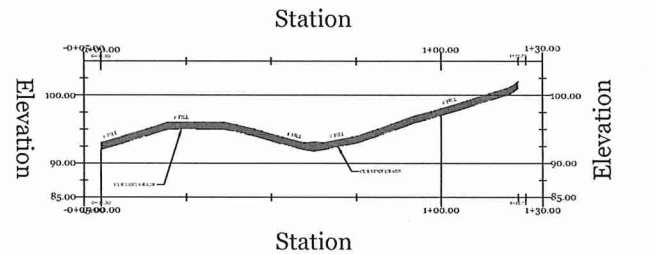
REDISTRIBUTION AREAS 4
SCALE: 1"=20'

**APPROXIMATE REDISTRIBUTION
AREA 4 QUANTITY**

Cut/Fill Summary	Cut Factor	Fill Factor	2d Area	Cut	Fill	Net
Regraded Area 4 Quantity	1.000	1.000	23333.25 Sq. Ft.	0.54 Cu. Yd.	869.21 Cu. Yd.	868.67 Cu. Yd.<Fill>
Totals			23333.25 Sq. Ft.	0.54 Cu. Yd.	869.21 Cu. Yd.	868.67 Cu. Yd.<Fill>



**PROFILE OF REDISTRIBUTION AREA 4
ALIGNMENT 1**
VERT. SCALE: 1" = 10'
HORIZ. SCALE: 1" = 20'



**PROFILE OF REDISTRIBUTION AREA 4
ALIGNMENT 2**
VERT. SCALE: 1" = 10'
HORIZ. SCALE: 1" = 20'

Redistribution Area 4 - Alternative 3
PREPARED FOR
TOWN OF WESTPORT: SENIOR CENTER
21 Imperial Avenue
WESTPORT, CONNECTICUT
September 23, 2020

	TOWN OF WESTPORT		PROJ. No.: 2019-24	DATE: 09/23/2020
	DEPARTMENT OF PUBLIC WORKS		DRAWN BY: ASM	REV: -/-
	ENGINEERING DIVISION		CHECKED BY:	SHEET: 6 OF 6
	TOWN HALL, 110 MYRTLE AVENUE WESTPORT CONNECTICUT 06890 203.341.1120 (f) 203.454.5783 www.westportct.gov		SCALE: AS NOTED	
DRAWING NAME: SENIOR CENTER ALTERNATIVE 3.DWG				