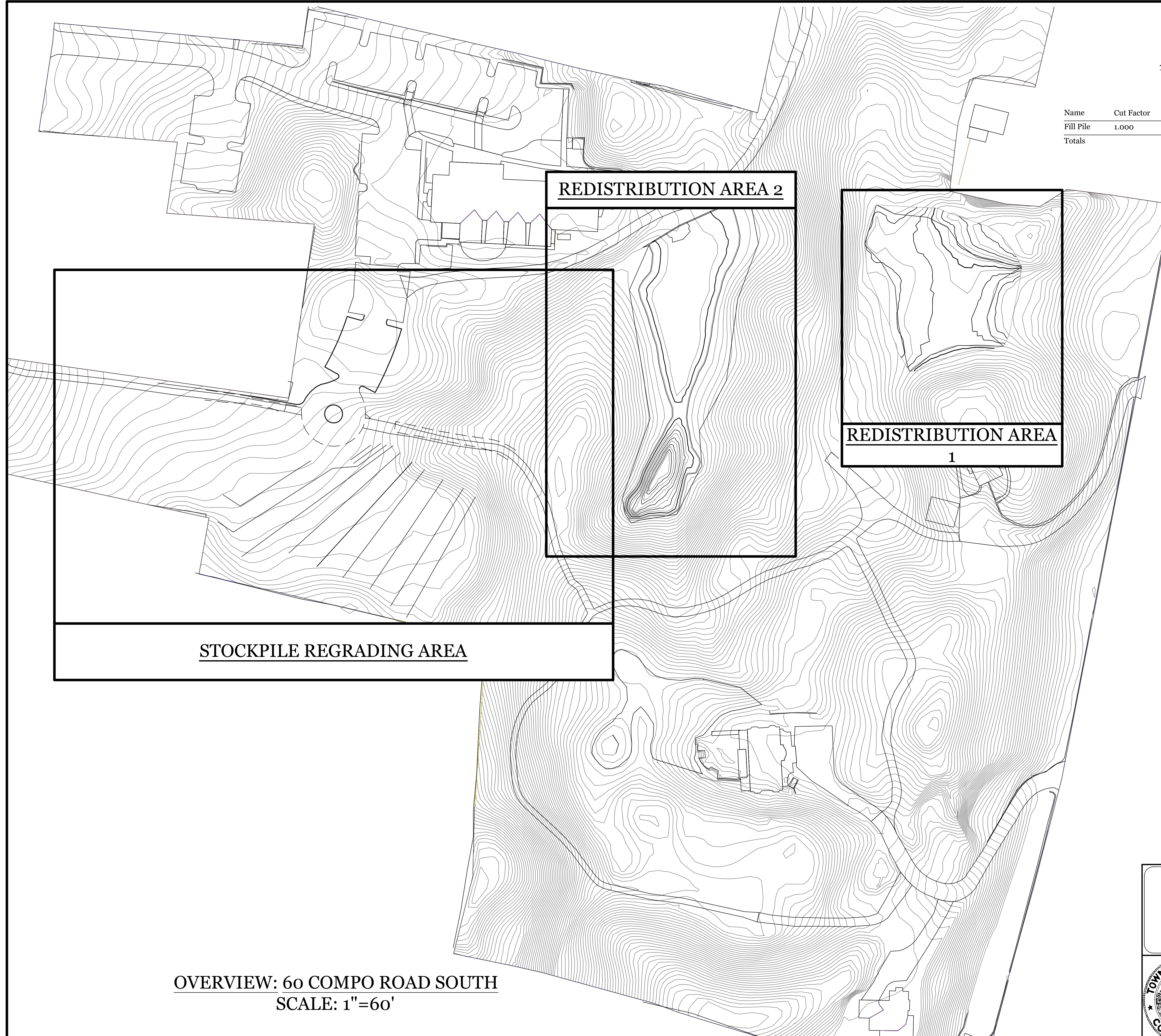


**APPROXIMATE EXISTING STOCKPILE
MATERIAL QUANTITY**

Name	Cut Factor	Fill Factor	2d Area	Cut	Fill	Net
Fill Pile	1.000	1.000	26466.87 Sq. Ft.	0.00 Cu. Yd.	3141.89 Cu. Yd.	3141.89 Cu. Yd. <Fill>
Totals			26466.87 Sq. Ft.	0.00 Cu. Yd.	3141.89 Cu. Yd.	3141.89 Cu. Yd. <Fill>




STOCKPILE REGRADING AREA

REDISTRIBUTION AREA 2

**REDISTRIBUTION AREA
1**

**OVERVIEW: 60 COMPO ROAD SOUTH
SCALE: 1"=60'**

Redistribution Plan - Alternative 2 PREPARED FOR TOWN OF WESTPORT: SENIOR CENTER 21 Imperial Avenue WESTPORT, CONNECTICUT September 23, 2020			
	TOWN OF WESTPORT		PROJ. No.: 2019-24
	DEPARTMENT OF PUBLIC WORKS		DATE: 09/23/2020
	ENGINEERING DIVISION		DRAWN BY: ASM
	TOWN HALL, 110 MYRTLE AVENUE WESTPORT CONNECTICUT 06880 203.341.1120 (f) 203.454.5783 www.westportct.gov		CHECKED BY:
		SCALE: AS NOTED	REV: <i>andrew</i>
			SHEET: 1 OF 4
		DRAWING NAME: SENIOR CENTER ALTERNATIVE 2.DWG	

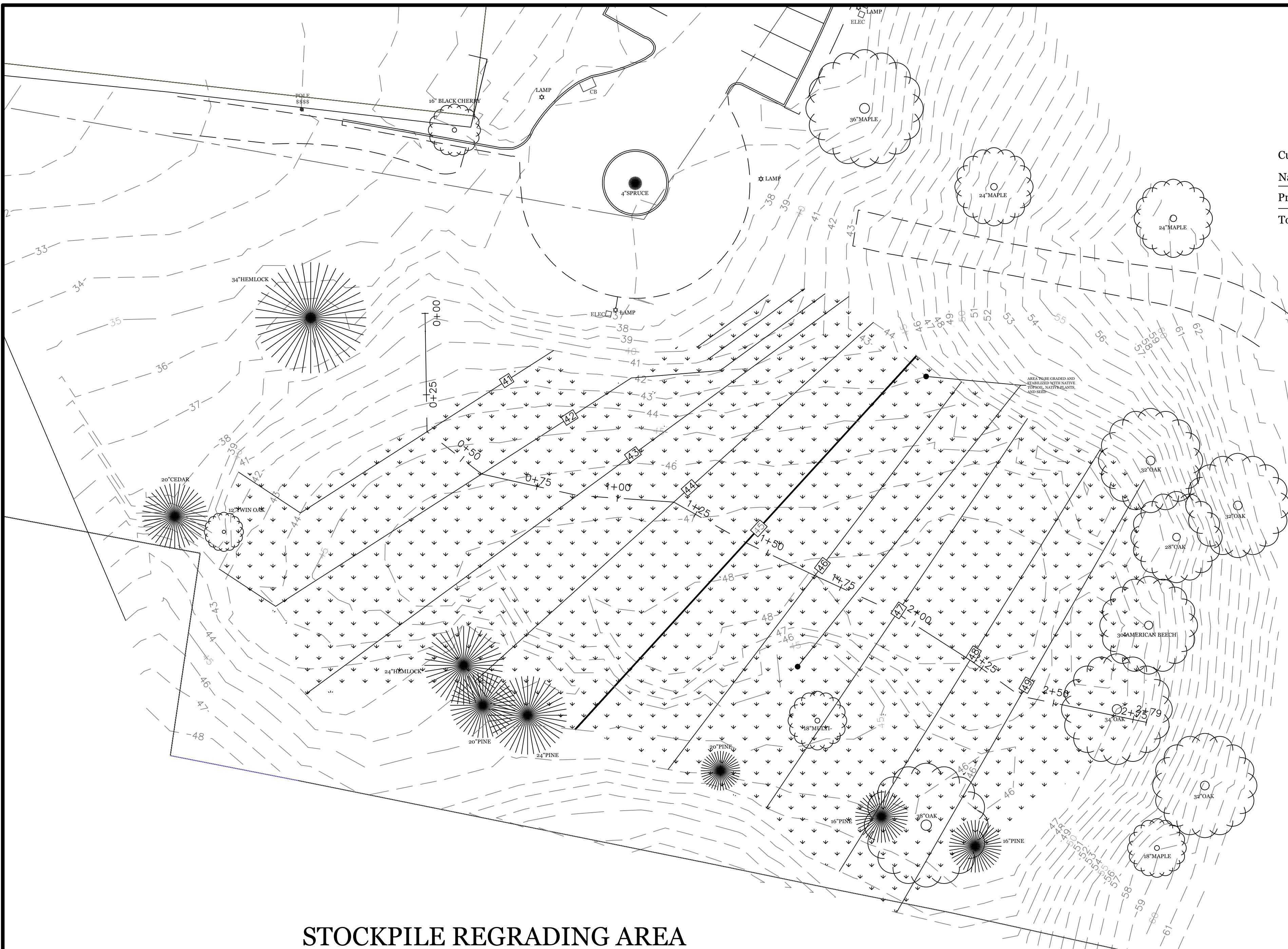
**APPROXIMATE STOCKPILE AREA
REGRADING QUANTITY**

Cut/Fill Summary

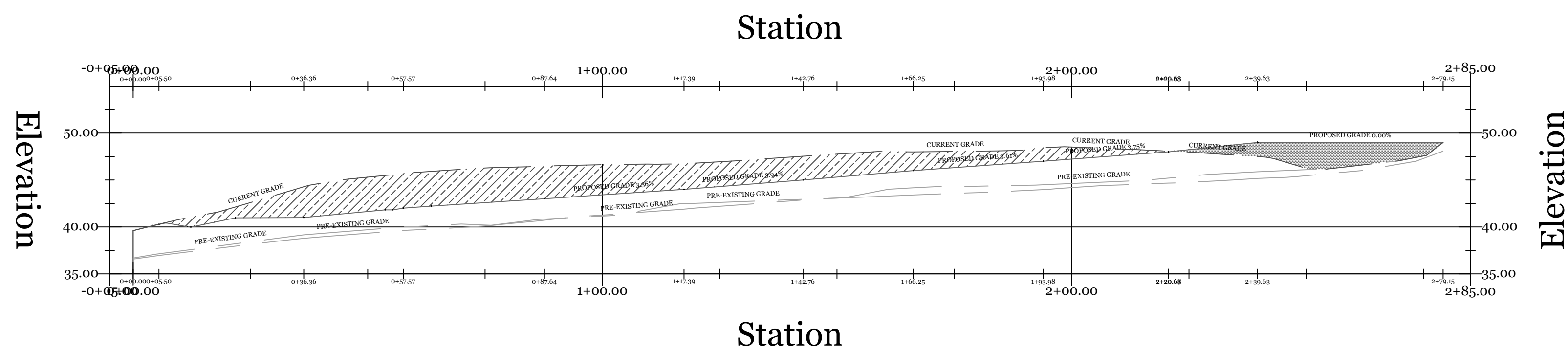
Name	Cut Factor	Fill Factor	2d Area	Cut	Fill	Net
Proposed Conditions 2 vs. Ex with Fill	1.000	1.000	102305.29 Sq. Ft.	1586.12 Cu. Yd.	819.81 Cu. Yd.	766.31 Cu. Yd.<Cut>
Totals			102305.29 Sq. Ft.	1586.12 Cu. Yd.	819.81 Cu. Yd.	766.31 Cu. Yd.<Cut>

**APPROXIMATE EXISTING STOCKPILE
MATERIAL QUANTITY**

Name	Cut Factor	Fill Factor	2d Area	Cut	Fill	Net
Fill Pile	1.000	1.000	26466.87 Sq. Ft.	0.00 Cu. Yd.	3141.89 Cu. Yd.	3141.89 Cu. Yd.<Fill>
Totals			26466.87 Sq. Ft.	0.00 Cu. Yd.	3141.89 Cu. Yd.	3141.89 Cu. Yd.<Fill>

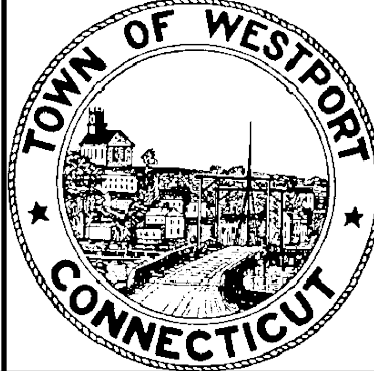


STOCKPILE REGRADING AREA
SCALE: 1"=20'

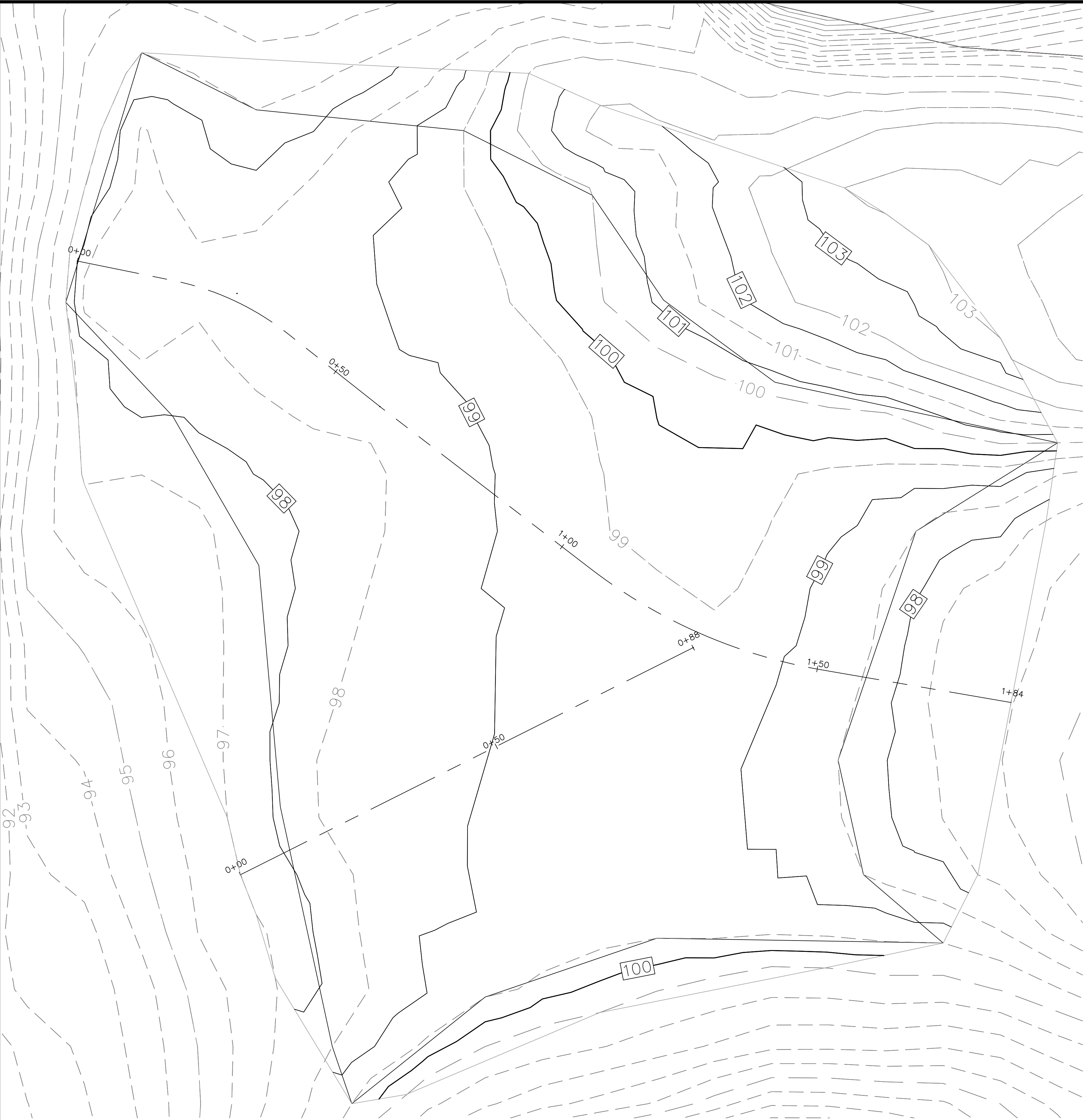


**PROFILE OF STOCKPILE REGRADING
AREA**
VERT. SCALE: 1" = 10'
HORIZ. SCALE: 1" = 20'

Stockpile Regrading Plan - Alternative 2
PREPARED FOR
TOWN OF WESTPORT: SENIOR CENTER
21 Imperial Avenue
WESTPORT, CONNECTICUT
September 23, 2020

	TOWN OF WESTPORT		PROJ. No.: 2019-24	DATE: 09/23/2020
	DEPARTMENT OF PUBLIC WORKS		DRAWN BY: ASM	REV: <i>asm</i>
	ENGINEERING DIVISION		CHECKED BY:	SHEET: 2 OF 4
	TOWN HALL, 110 MYRTLE AVENUE WESTPORT CONNECTICUT 06880 203.341.1120 (f) 203.454.5783 www.westportct.gov		SCALE: AS NOTED	

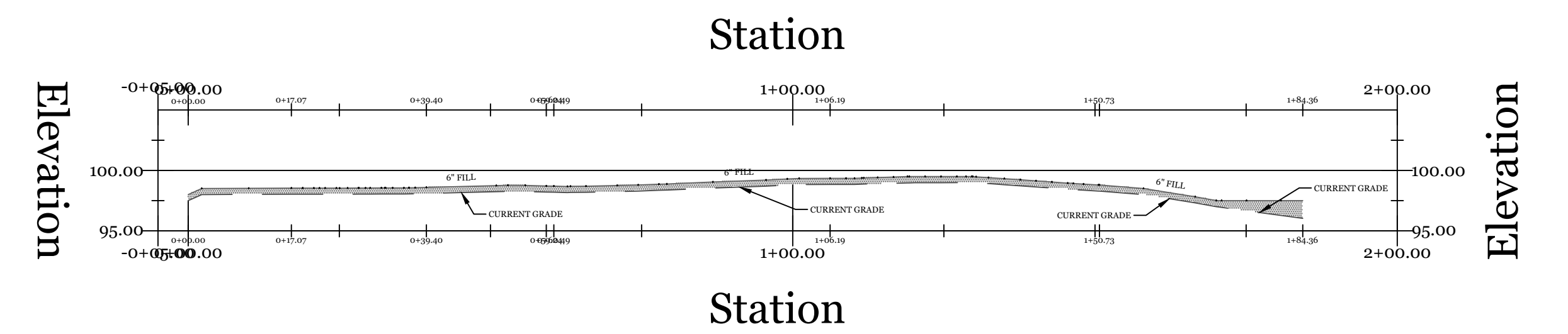
DRAWING NAME: SENIOR CENTER ALTERNATIVE 2.DWG



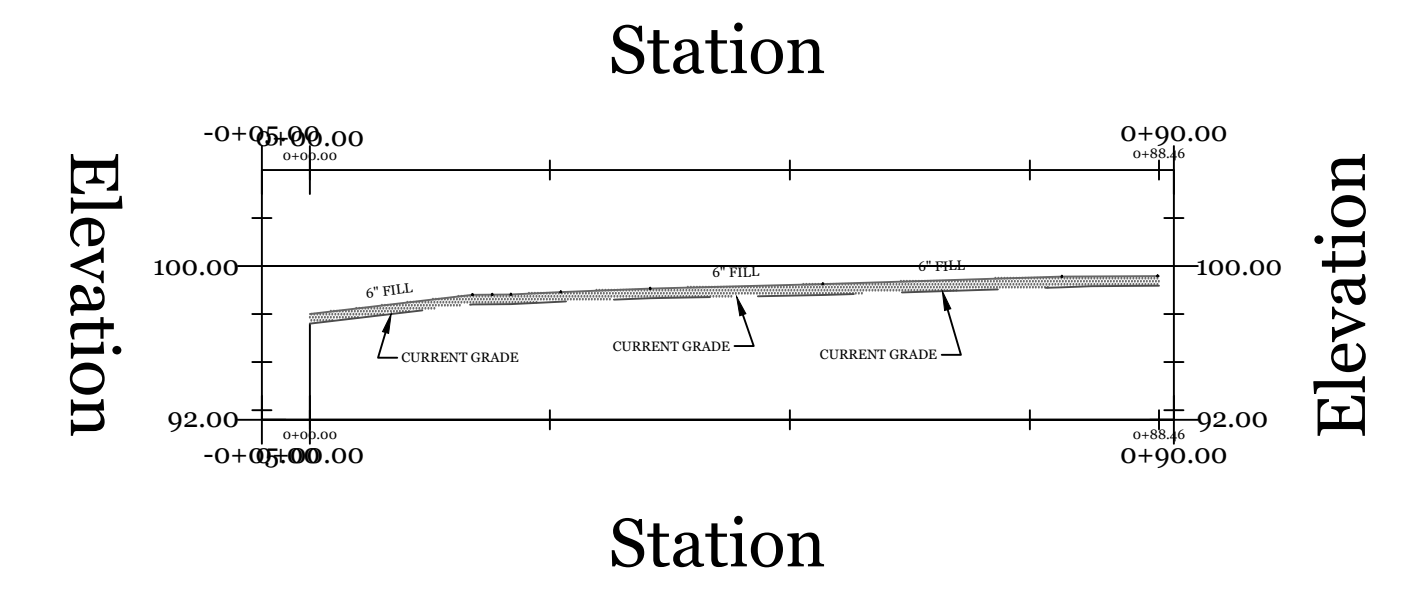
REDISTRIBUTION AREA 1
SCALE: 1"=10'

**APPROXIMATE REDISTRIBUTION
AREA 1 QUANTITY**

Cut/Fill Summary						
Name	Cut Factor	Fill Factor	2d Area	Cut	Fill	Net
Regraded Area 1 Quantities	1.000	1.000	23468.78 Sq. Ft.	0.00 Cu. Yd.	457.11 Cu. Yd.	457.11 Cu. Yd.<Fill>
Totals			23468.78 Sq. Ft.	0.00 Cu. Yd.	457.11 Cu. Yd.	457.11 Cu. Yd.<Fill>

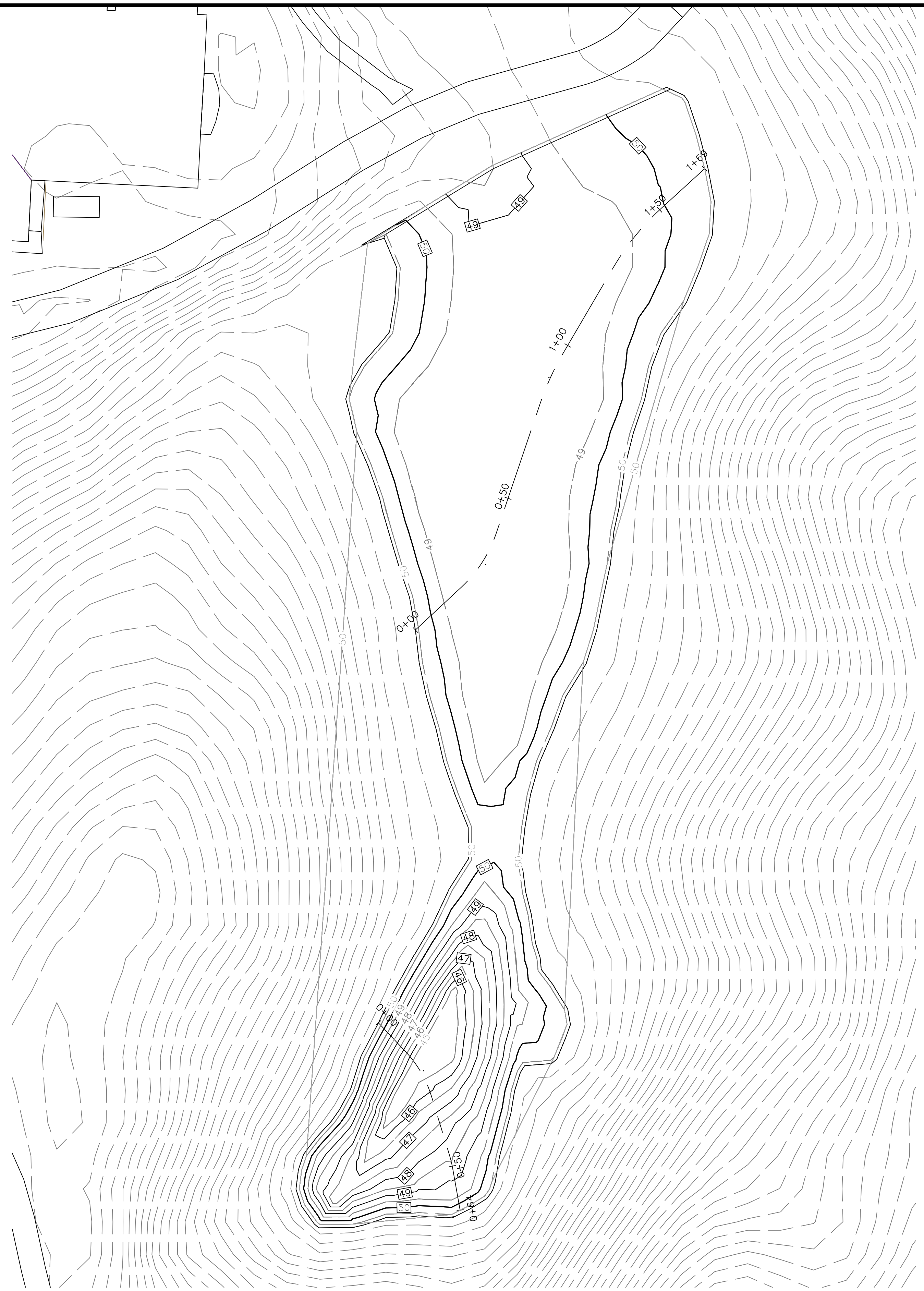


**PROFILE OF REDISTRIBUTION AREA 1
ALIGNMENT 1**
VERT. SCALE: 1" = 10'
HORIZ. SCALE: 1" = 20'



**PROFILE OF REDISTRIBUTION AREA 1
ALIGNMENT 2**
VERT. SCALE: 1" = 10'
HORIZ. SCALE: 1" = 20'

Redistribution Area 1 - Alternative 2 PREPARED FOR TOWN OF WESTPORT: SENIOR CENTER 21 Imperial Avenue WESTPORT, CONNECTICUT September 23, 2020			
	TOWN OF WESTPORT DEPARTMENT OF PUBLIC WORKS ENGINEERING DIVISION		PROJ. No.: 2019-24 DATE: 09/23/2020
			DRAWN BY: ASM REV:
			CHECKED BY: SHEET: 3 OF 4
			SCALE: AS NOTED
TOWN HALL, 110 MYRTLE AVENUE WESTPORT CONNECTICUT 06880 203.341.1120 (f) 203.454.5783 www.westportct.gov		DRAWING NAME: SENIOR CENTER ALTERNATIVE 2.DWG	

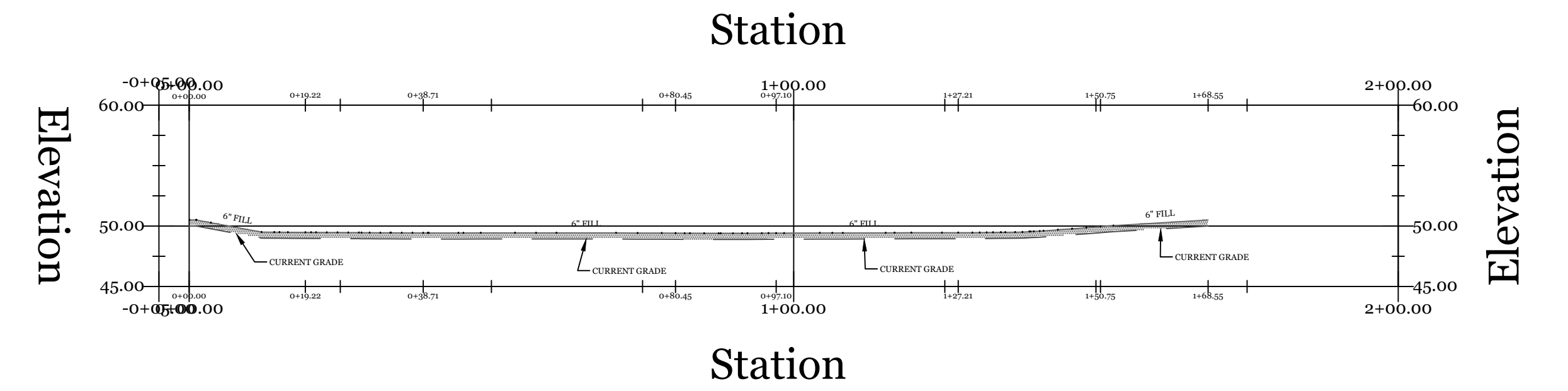


REDISTRIBUTION AREA 2
SCALE: 1"=20'

**APPROXIMATE REDISTRIBUTION
AREA 2 QUANTITY**

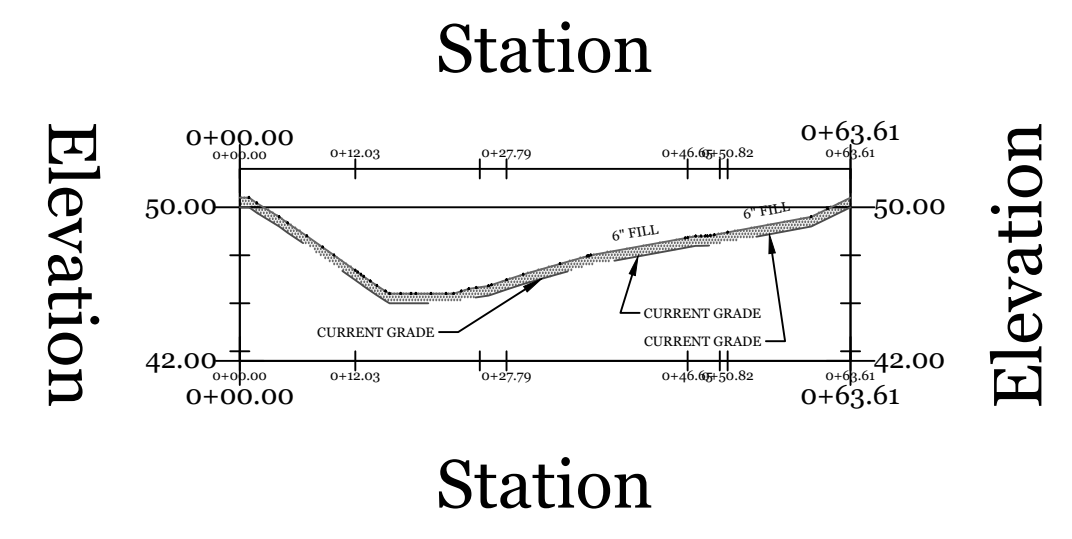
Cut/Fill Summary

Name	Cut Factor	Fill Factor	2d Area	Cut	Fill	Net
Regraded Area 2 Quantities	1.000	1.000	25977.79 Sq. Ft.	0.00 Cu. Yd.	481.07 Cu. Yd.	481.07 Cu. Yd.<Fill>
Totals			25977.79 Sq. Ft.	0.00 Cu. Yd.	481.07 Cu. Yd.	481.07 Cu. Yd.<Fill>




**PROFILE OF REDISTRIBUTION AREA 2
ALIGNMENT 1**

VERT. SCALE: 1" = 10'
HORIZ. SCALE: 1" = 20'



**PROFILE OF REDISTRIBUTION AREA 2
ALIGNMENT 2**

VERT. SCALE: 1" = 10'
HORIZ. SCALE: 1" = 20'

Redistribution Area 2 - Alternative 2 PREPARED FOR TOWN OF WESTPORT: SENIOR CENTER 21 Imperial Avenue WESTPORT, CONNECTICUT September 23, 2020			
 TOWN OF WESTPORT DEPARTMENT OF PUBLIC WORKS ENGINEERING DIVISION TOWN HALL, 110 MYRTLE AVENUE WESTPORT CONNECTICUT 06880 203.341.1120 (f) 203.454.5783 www.westportct.gov	PROJ. No.: 2019-24	DATE: 09/23/2020	
	DRAWN BY: ASM	REV: <i>asm</i>	
	CHECKED BY:	SHEET: 4 OF 4	
	SCALE: AS NOTED		
DRAWING NAME: SENIOR CENTER ALTERNATIVE 2.DWG			