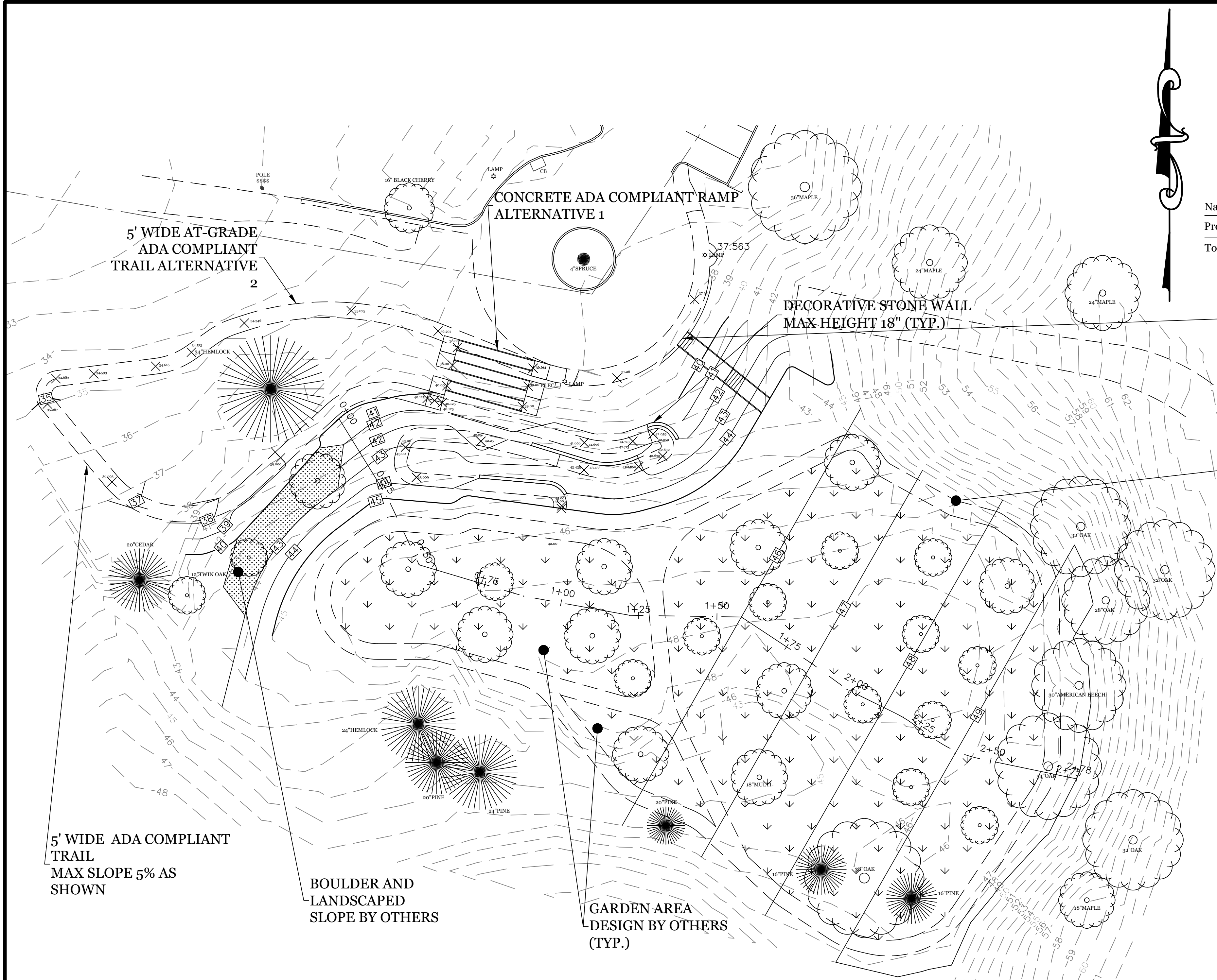


ALTERNATIVE 1 APPROXIMATE EXCAVATION AND FILL QUANTITIES

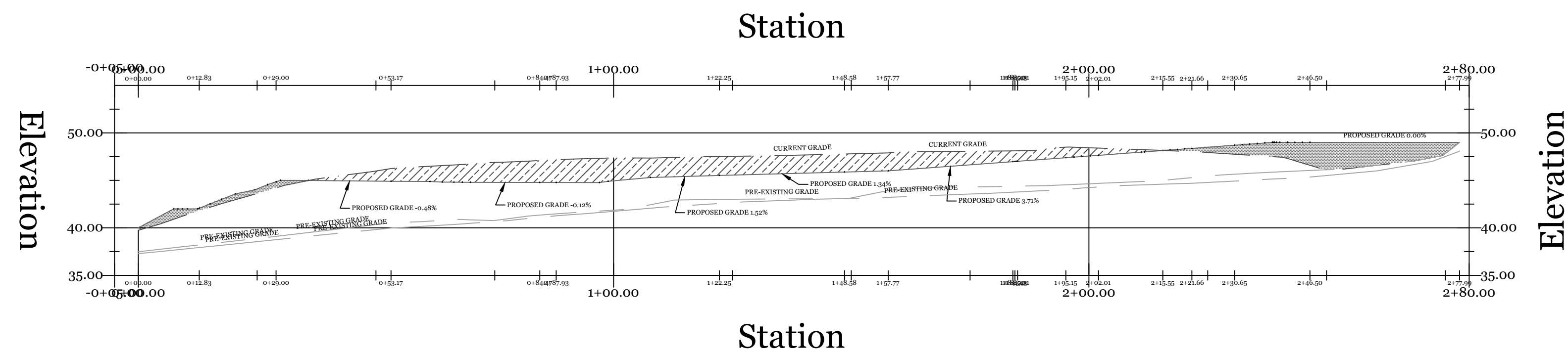
Name	Cut Factor	Fill Factor	2d Area	Cut	Fill	Net
Proposed Conditions 1 vs. Existing with Fill	1.000	1.000	102305.22 Sq. Ft.	769.81 Cu. Yd.	1070.09 Cu. Yd.	300.28 Cu. Yd.<Fill>
Totals			102305.22 Sq. Ft.	769.81 Cu. Yd.	1070.09 Cu. Yd.	300.28 Cu. Yd.<Fill>

APPROXIMATE EXISTING STOCKPILE MATERIAL QUANTITY

Cut/Fill Summary						
Name	Cut Factor	Fill Factor	2d Area	Cut	Fill	Net
Fill Pile	1.000	1.000	26466.87 Sq. Ft.	0.00 Cu. Yd.	3141.89 Cu. Yd.	3141.89 Cu. Yd.<Fill>
Totals			26466.87 Sq. Ft.	0.00 Cu. Yd.	3141.89 Cu. Yd.	3141.89 Cu. Yd.<Fill>



ALTERNATIVE 1
SCALE: 1"=20'



**PROFILE OF REGRADED GARDEN
AREA**
VERT. SCALE: 1" = 10'
HORIZ. SCALE: 1" = 20'

Stockpile Restoration Plan - Alternative 1
PREPARED FOR
TOWN OF WESTPORT: SENIOR CENTER
21 Imperial Avenue
WESTPORT, CONNECTICUT
September 23, 2020



TOWN OF WESTPORT
DEPARTMENT OF PUBLIC WORKS
ENGINEERING DIVISION

TOWN HALL, 110 MYRTLE AVENUE
WESTPORT CONNECTICUT 06880
203.341.1120
(f) 203.454.5783
www.westportct.gov

PROJ. No.:	2019-24	DATE:	09/23/2020
DRAWN BY:	ASM	REV:	
CHECKED BY:		SHEET:	1 OF 1

SCALE: 1" = 20'



DRAWING NAME: 2017-14 MYRTLE AVE SIDEWALKS DP 2.DWG