



# People and Places of the South Western Region of Connecticut

An Examination of 2010 Census and 2005-2009  
American Community Survey Data



4/28/2011

Prepared by  
South Western Regional Planning Agency  
Stamford Government Center  
888 Washington Blvd, 3rd Floor  
Stamford, CT 06901

<http://www.swrpa.org>  
(203) 316-5190



# SWRPA

*South Western Regional Planning Agency*



## List of Tables, Charts and Figures

Name	Page Number
Table 1: Total Population in the Region between 1960 and 2010 .....	7
Table 2: Absolute Change in Total Population in the Region between 1960 and 2010 .....	7
Table 3: Total Households and Average Household Size in the Region .....	9
Table 4: Housing Occupancy in the Region.....	9
Table 5: Number and Percent of Hispanic/Latino Population in the Region.....	11
Table 6: Percent Change in Population by Racial/Ethnic Group in the Region .....	12
Table 7: Male and Female Populations in the Region .....	17
Table 8: Foreign Born Population in the Region.....	18
Table 9: World Region of Birth of the Foreign Born Population in the Region .....	19
Table 10: Language Spoken at Home and Residents with Limited English Proficiency in the Region ....	20
Table 11: Median Household Income, Per Capita Income, and Poverty in the Region.....	22
Table 12: Means of Commuting to Work in the Region .....	26
Table 13: Mean Travel Time to Work in the Region by Transportation Mode.....	29
Table 14: Educational Attainment in the Region.....	30

Name	Page Number
Chart 1: Percentage of Region’s Total Population by Municipality .....	6
Chart 2: Percent Change in Population by Municipality, 1990-2010 .....	8
Chart 3: Housing Tenure in the Region (Absolute and Percentage) by Municipality .....	10
Chart 4: Racial Composition of the Region by Municipality .....	12
Chart 5: Minority Populations of Municipalities in the Region .....	13
Chart 6: Median Age by Municipality in the Region, 2000-2009.....	15
Chart 7: Percentage of Population by Age Cohort by Municipality in the Region .....	16
Chart 8: Distribution of Population by Age Cohort by Municipality in the Region.....	16
Chart 9: Distribution of Sex and Age in the Region .....	17
Chart 10: Composition of Municipalities by World Region of Birth of the Foreign Born Population .....	19
Chart 11: Means of Commuting to Work by Municipality in the Region .....	25
Chart 12: Mode Split in the South Western Region .....	27
Chart 13: Mode Split in the State of Connecticut.....	27
Chart 14: Educational Attainment in the Region.....	30

Name	Page Number
Figure 1: Persons of Non-White Racial Groups .....	14
Figure 2: Limited English Proficiency .....	21
Figure 3: Individuals whose Income in the Past 12 Months is Below the Poverty Line .....	24
Figure 4: Workers 16 Years and Older who Commute to Work by Means Other than Drove Alone.....	28

## **Acknowledgement of Funding Sources**

“The preparation of this report has been financed in part through funds from the US Department of Transportation, Federal Transit Administration, the Federal Highway Administration, and the Connecticut Department of Transportation. This document is disseminated under the sponsorship of the Department of Transportation in the interest of information exchange. The contents of this report reflect the views of the author who is responsible for the facts and the accuracy of the data presented therein. The contents do not necessarily reflect the official views or policies of the Federal Transit Administration, the Federal Highway Administration, Connecticut Department of Transportation, or local elected municipal officials. The report does not constitute a specification or regulation.”

Document Prepared By:

South Western Regional Planning Agency  
Stamford Government Center  
888 Washington Blvd., 3rd Floor  
Stamford, CT 06901

## **Introduction**

The American Community Survey (ACS) is a nationwide survey produced by the U.S. Census Bureau that provides a rich array of information, including social, demographic, economic, and housing data about the American population. The U.S. Census Bureau releases data from the ACS in the form of both single-year and multiyear estimates, giving communities the current information they need to plan investments and services. The main difference between the Decennial Census and the ACS is that the former reflects a “snapshot” in time, whereas the latter is based on data collected continuously throughout the time period.

This memorandum discusses ACS data collected between January 2005 and December 2009. Whereas 1-year and 3-year estimates provide the most current demographic data, this 5-year estimate provides data at the Census tract level, which allows a more focused analysis on the communities and towns of the South Western Region.<sup>1</sup> Additionally, the 2005-2009 data have been supplemented by Census 2010 data, released in March 2011. The categories for which Census 2010 data are available are denoted with an asterisk below.

This report highlights a variety of social, demographic, economic, and housing data, with a separate section for each of the measures below. More data in other categories can be attained through the U.S. Census Bureau’s website: <http://www.census.gov/acs/www/>. Also, additional information on the Region can be found at SWRPA’s website: <http://www.swrpa.org/Default.aspx?Publications=250>.

### Census Topics Examined in this Report:

- Total Population\*
- Households
- Housing Occupancy\*
- Housing Tenure
- Race & Ethnicity\*
- Age
- Gender
- Foreign Born & World Region of Birth
- Language Spoken & Limited English Proficiency
- Income & Poverty
- Means of Commuting to Work
- Mean Travel Time to Work
- Educational Attainment

---

<sup>1</sup> Another important distinction between the Decennial Census and the ACS is the sample size. The sample size of the ACS is much smaller than the one taken for the Decennial Census, and therefore a certain amount of sampling error is associated with each figure. A margin of error is the difference between an estimate and its upper or lower confidence bounds. Confidence bounds can be created by adding the margin of error to the estimate (for an upper bound) and subtracting the margin of error from the estimate (for a lower bound). All published margins of error for the American Community Survey are based on a 90 percent confidence level. For instance, the ACS reports that there are 46,190 households in Stamford, with a margin of error of +/-769. By adding and subtracting the margin of error from the estimate, one can be 90-percent confident that the true number of households in Stamford falls somewhere between the range of 45,421 – 46,959 households. Each estimate provided in this report has a corresponding field (labeled +/-), which provides the margin of error for that estimate. Estimates not directly provided by the ACS report, but rather calculated from available data (such as totals and percentages of the Region) also have defined margins of error, based on the margins of error of the input statistics.

\*Denotes topics which rely on data from the 2010 Decennial Census.

## Executive Summary

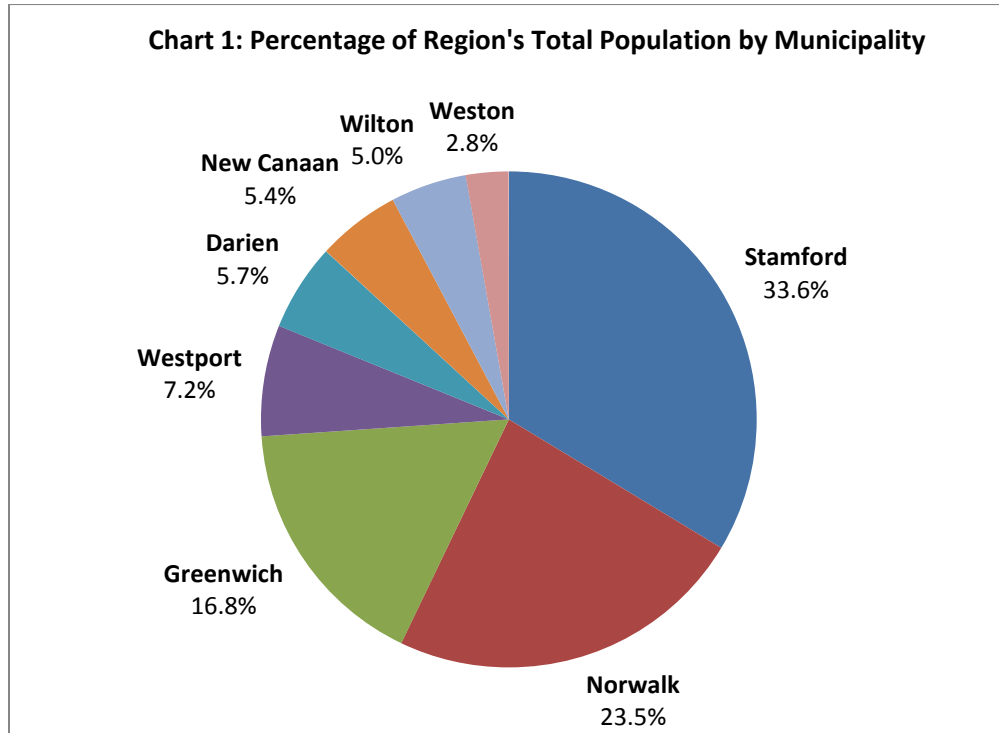
This report summarizes key demographic information contained in the American Community Survey (ACS) 2005-2009 and the 2010 Decennial Census, both produced by the U.S. Census Bureau. Key findings from the newly-released data, including notable comparisons to the 2000 Decennial Census, are provided below and presented in detail in the ensuing sections.

- **Total Population:** The regional population grew by 10,963 persons, an increase of 3.1%, from 353,556 persons in 2000 to 364,519 persons in 2010. This contrasts sharply with the previous decade (1990-2000), when the regional population grew by 23,621 persons, an increase of 7.2%, from 329,935 to 353,556 persons. The state as a whole exhibited more consistent growth over the last two decades, growing by 3.6% from 1990-2000, and 4.9% from 2000-2010.
- **Households:** There are 134,323 households in the South Western Region, which comprise just over 10% of all Connecticut households. Darien has the largest average household size in the Region of 3.1 persons per household, whereas Stamford and Norwalk have the smallest average household size, at 2.5 persons per household each.
- **Housing Occupancy and Tenure:** There are 146,792 housing units in the South Western Region. Of these, 93% are occupied and 7% are vacant. The highest vacancy rate can be found in Greenwich (10.0%), and the lowest in Wilton (4.7%). At the state-level, 92.1% of housing units are occupied and 7.9% are vacant.
- **Race/Ethnicity:** The Region is more diverse than the state in terms of race and ethnicity. Specifically, the Hispanic/Latino population now represents 16.2% of the Region's population, including 24.3% of the population in Norwalk and 23.8% in Stamford. Overall, Norwalk and Stamford are home to roughly 85% of the Region's Hispanic/Latino population. At the state level, Hispanics/Latinos represent roughly 13.4% of the overall population. Additionally, the region's Black/African American population has decreased 3.1% since 2000, and the Asian/Pacific Islander population has increased by 53.4%
- **Age:** The 15-19 and 20-24 year age cohorts are underrepresented (10.7% of total), when compared to the state (13.7% of total). Median age increased in Greenwich and Westport, which, at 42.7 years each, have the highest median ages in the Region. The only community to experience a decrease in median age since 2000 was Darien, decreasing slightly from 38.0 years to 37.8 years. Stamford and Norwalk have the lowest median ages in the Region, at 36.6 years and 37.7 years, respectively.
- **Foreign Born Residents:** The foreign born population now comprises 23.5% of the Region's total population, almost twice the percentage of the state (12.8%). More than one-third of Stamford's residents (36.0%) were born outside of the United States, up from 29.6% in 2000. This trend is also taking place at the state level, as Connecticut saw an increase of 76,152 foreign born residents (an increase of 20.5%) since the 2000 Census.
- **Language Spoken at Home:** The number of residents in the Region that speak a language other than English at home has increased by 19.7% since the 2000 Decennial Census, and now totals 95,625 persons. The percentage of such residents in the Region is 28.8%, as compared to the state-wide percentage of 19.7%. Stamford and Norwalk have a higher percentage of such residents, at 42.4% and 32.2%, respectively. Furthermore, the percentage of residents in the Region with limited English proficiency is 12.1%, compared to the statewide percentage of 7.7%. The number of such residents has increased in the Region by 19.6% since the 2000 Decennial Census, and now totals 40,384 persons.

- **Median Income:** The median household income and per capita income throughout the Region is significantly higher than the state. All towns in the Region have a higher household income than the state, whose overall median household income is \$67,721. Stamford and Norwalk are most similar to the state median, at \$76,134 and \$75,695, respectively. Weston has the highest median household income in the Region of \$206,469. Per capita income is also higher for the Region (\$65,409), than the state (\$36,468). As with median household income, Stamford and Norwalk have per capita incomes most similar to the state, at \$46,928 and \$41,419, respectively. New Canaan has the highest per capita income in the Region of \$99,160.
- **Poverty:** Although most towns in the Region have very low levels of poverty, the percentage of individuals below the poverty line is higher in Stamford, at 10.2%, than the statewide percentage of 8.7%. Norwalk is similar to the state average at 8.2% of individuals living below the poverty line. All other towns in the Region have percentages much lower than the state average. Mapping the data shows that poverty is highly concentrated in the Stamford neighborhoods of Downtown, East Side, West Side, and South End (excluding Shippan), as well as in the Norwalk neighborhoods of Central and South Norwalk.
- **Journey to Work:** The Region is distinguished by the percentage of people commuting to work by a method other than driving alone. Only 68.4% of workers 16 years and older drive alone to work, compared with the state average of 79.4%. The Region's public transit usage of 14.0% stands at more than three times greater than that of the state, which is 4.3%. Public transit is used at the highest proportions in Darien (26.0% of workers) and Westport (22.7% of workers), and has increased by approximately 7.8% in the Region since the 2000 Decennial Census. Mean travel time to work in all of the Region's communities is greater than that of the state. The greatest mean travel time is in Weston, at 41 minutes, whereas the lowest is in Norwalk at 24.9 minutes.
- **Education:** The percentage of the Region's population having attained a bachelor's degree or higher is 53.1%, compared to the state percentage of 35.1%. All towns in the Region have a higher percentage of residents 25 years and older with a bachelor's degree or higher than that of the state, with Weston having the highest percentage of 80.0%. Since 2000, residents 25 years and older with a bachelor's degree or higher increased by 5.9% in the Region, while residents without a high school diploma decreased by 28.7%.

## **Total Population**

According to the 2010 Decennial Census, the total population in the South Western Region is 364,519 persons. Stamford remains the most populous city in the Region, and the fourth most populous in the state, with 122,643 residents, representing roughly one-third of the Region's population. Weston continues to be the smallest town, with a population of 10,179 persons.



Source: U.S. Census Bureau, 2010 Census

Since the 2000 Census, the Region's overall population grew by 3.1%. Only Darien grew by more than 5% since 2000. This minimal growth rate stands in contrast to the period of time between 1990 and 2000, when the Region's population grew by 7.2%, or at nearly twice the rate of the state, which grew by only 4% during the same time period. The growth for the state between 2000 and 2010 was 5%, indicating a more steady growth rate over the last two decades.

Between 1960 and 2010, total population in the Region grew at a slightly slower rate of 30.6% as compared to the state of Connecticut, which grew at 41.0% during the same time period. Weston and Wilton experienced the greatest percentage growth in the Region during the past half-century. Weston's total population grew from 4,039 persons in 1960 to 10,179 in 2010, an increase of 152%. Wilton's total population grew from 8,026 persons in 1960 to 18,062 in 2010, an increase of 125%. Greatest absolute growth in total population occurred in Stamford, which increased by 29,930 persons between 1960 and 2010. Darien experienced the least absolute growth of 2,295 persons between 1960 and 2010.



**Table 1: Total Population in the Region between 1960 and 2010**

	1960	1970	1980	1990	2000	2010
Darien	18,437	20,336	18,892	18,196	19,607	20,732
Greenwich	53,793	59,755	59,578	58,441	61,101	61,171
New Canaan	13,466	17,451	17,931	17,864	19,395	19,738
Norwalk	67,775	79,288	77,767	78,331	82,951	85,603
Stamford	92,713	108,798	102,453	108,056	117,083	122,643
Weston	4,039	7,417	8,284	8,648	10,037	10,179
Westport	20,955	27,318	25,290	24,410	25,749	26,391
Wilton	8,026	13,572	15,351	15,989	17,633	18,062
<b>SW Region</b>	<b>279,204</b>	<b>333,935</b>	<b>325,546</b>	<b>329,935</b>	<b>353,556</b>	<b>364,519</b>
<b>State of CT</b>	<b>2,535,234</b>	<b>3,032,217</b>	<b>3,107,576</b>	<b>3,287,116</b>	<b>3,405,565</b>	<b>3,574,097</b>

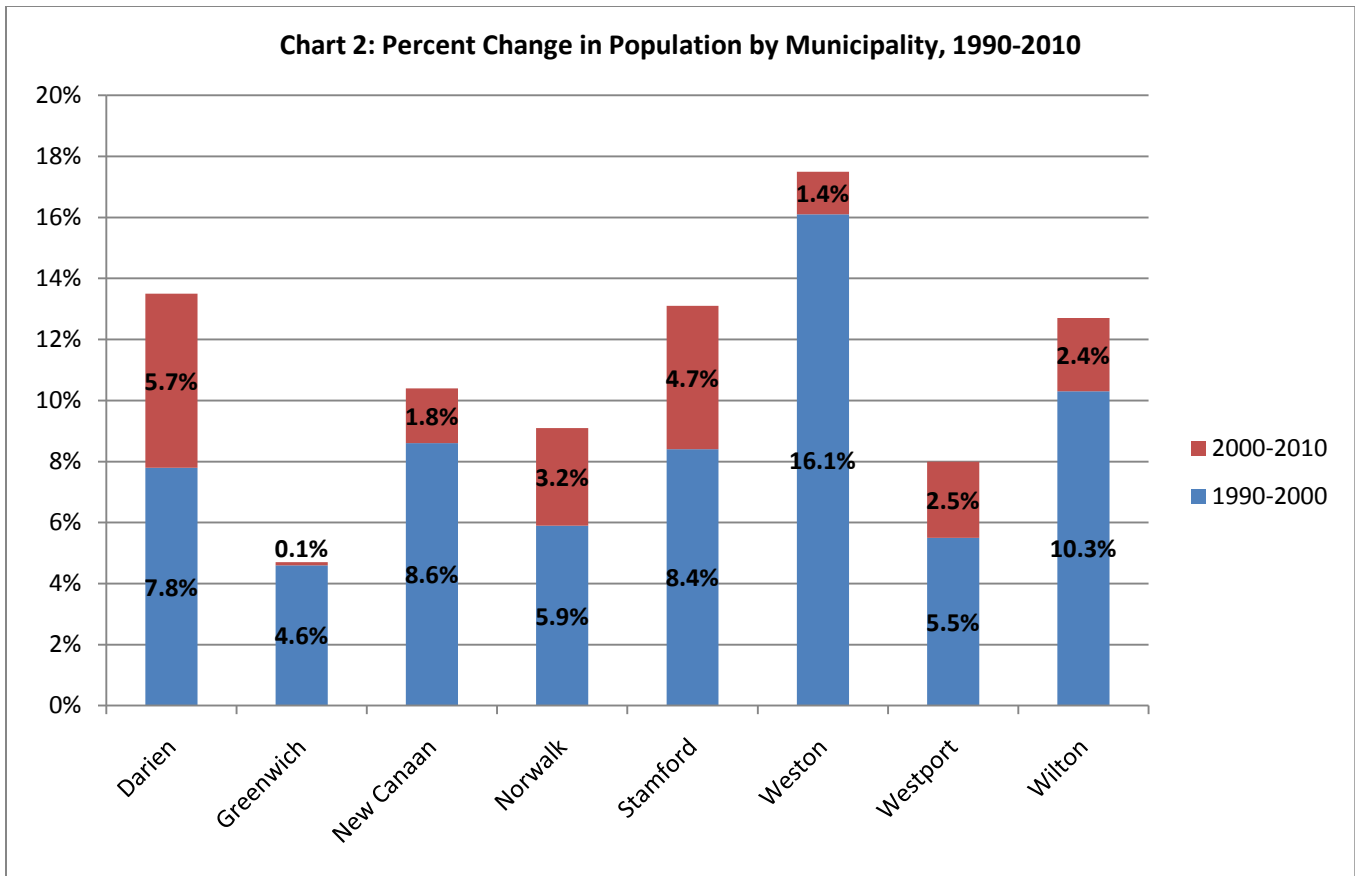
Source: U.S. Census Bureau, 2010 Census

**Table 2: Absolute Change in Total Population in the Region between 1960 and 2010**

	1960-2010	1960-1970	1970-1980	1980-1990	1990-2000	2000-2010
Darien	<b>2,995</b>	1,899	-1,444	-696	1,411	1,125
Greenwich	<b>7,378</b>	5,962	-177	-1,137	2,660	70
New Canaan	<b>6,272</b>	3,985	480	-67	1,531	343
Norwalk	<b>17,828</b>	11,513	-1,521	564	4,620	2,652
Stamford	<b>29,930</b>	16,085	-6,345	5,603	9,027	5,560
Weston	<b>6,140</b>	3,378	867	364	1,389	142
Westport	<b>5,436</b>	6,363	-2,028	-880	1,339	642
Wilton	<b>10,036</b>	5,546	1,779	638	1,644	429
<b>SW Region</b>	<b>86,015</b>	54,731	-8,389	4,389	23,621	10,963
<b>State of CT</b>	<b>1,038,863</b>	496,983	75,359	179,540	118,449	168,532

Source: U.S. Census Bureau, 2010 Census

**Chart 2: Percent Change in Population by Municipality, 1990-2010**



Source: U.S. Census Bureau, 2010 Census

**Households**

There are 134,323 households (+/- 1,170) in the South Western Region, accounting for just over 10% of all Connecticut households. The average household size for the Region is 2.66 (+/- 0.02) persons per household, which is slightly higher than the State average of 2.55 (+/- 0.01) persons per household. Most towns in the Region have a higher average household size than the state average. Darien has the largest average household size in the Region at 3.08 (+/- 0.07) persons per household. Stamford and Norwalk both have the smallest average household size in the Region, at 2.53 (+/- 0.04) and 2.50 (+/- 0.05) persons per household, respectively.

Since the 2000 Decennial Census, the average household size for the Region did not change significantly, which is consistent with the trend at the state-level. Darien, Westport, New Canaan, Greenwich, and Wilton all experienced slight increases in average household size, while Weston, Norwalk and Stamford decreased slightly.

**Table 3: Total Households and Average Household Size in the Region**

2009	Total Households	+/-	Average Household Size	+/-
Darien	6,556	156	3.08	0.07
Greenwich	22,941	404	2.66	0.04
New Canaan	6,838	196	2.90	0.08
Norwalk	33,057	685	2.50	0.05
Stamford	46,190	769	2.53	0.04
Weston	3,371	118	3.01	0.11
Westport	9,499	223	2.77	0.06
Wilton	5,871	134	2.97	0.07
<b>SW Region</b>	<b>134,323</b>	<b>1,170</b>	<b>2.66</b>	<b>0.02</b>
<b>State of CT</b>	<b>1,327,482</b>	<b>3,454</b>	<b>2.55</b>	<b>0.01</b>

Source: U.S. Census Bureau, 2005-2009 ACS 5-Year Estimates

### **Housing Occupancy**

There are a total of 146,792 housing units in the South Western Region, which represent 9.8% of the total housing units in the state. The percentage of occupied housing units for the Region is 93%, which is slightly higher than the state percentage of 92%. Accordingly, the percentage of vacant housing units for the Region is 7%, and the state 8%. The highest percentage of vacant housing units can be found in Greenwich (10.0%) followed by Weston (8.0%) and Westport (7.9%). The lowest percentage of vacant housing units can be found in Wilton (4.7%) and Darien (5.3%). In 2000, vacancy rates ranged from a high of 6.2% in Weston to a low of 2.9% in Darien.

**Table 4: Housing Occupancy in the Region**

2010	Total Housing Units	Occupied Housing Units	%	Vacant Housing Units <sup>2</sup>	%
Darien	7,074	6,698	94.7%	376	5.3%
Greenwich	25,631	23,076	90.0%	2,555	10.0%
New Canaan	7,551	7,010	92.8%	541	7.2%
Norwalk	35,415	33,217	93.8%	2,198	6.2%
Stamford	50,573	47,357	93.6%	3,216	6.4%
Weston	3,674	3,379	92.0%	295	8.0%
Westport	10,399	9,573	92.1%	826	7.9%
Wilton	6,475	6,172	95.3%	303	4.7%
<b>SW Region</b>	<b>146,792</b>	<b>136,482</b>	<b>93.0%</b>	<b>10,310</b>	<b>7.0%</b>
<b>State of CT</b>	<b>1,487,891</b>	<b>1,371,087</b>	<b>92.1%</b>	<b>116,804</b>	<b>7.9%</b>

Source: U.S. Census Bureau, 2010 Census

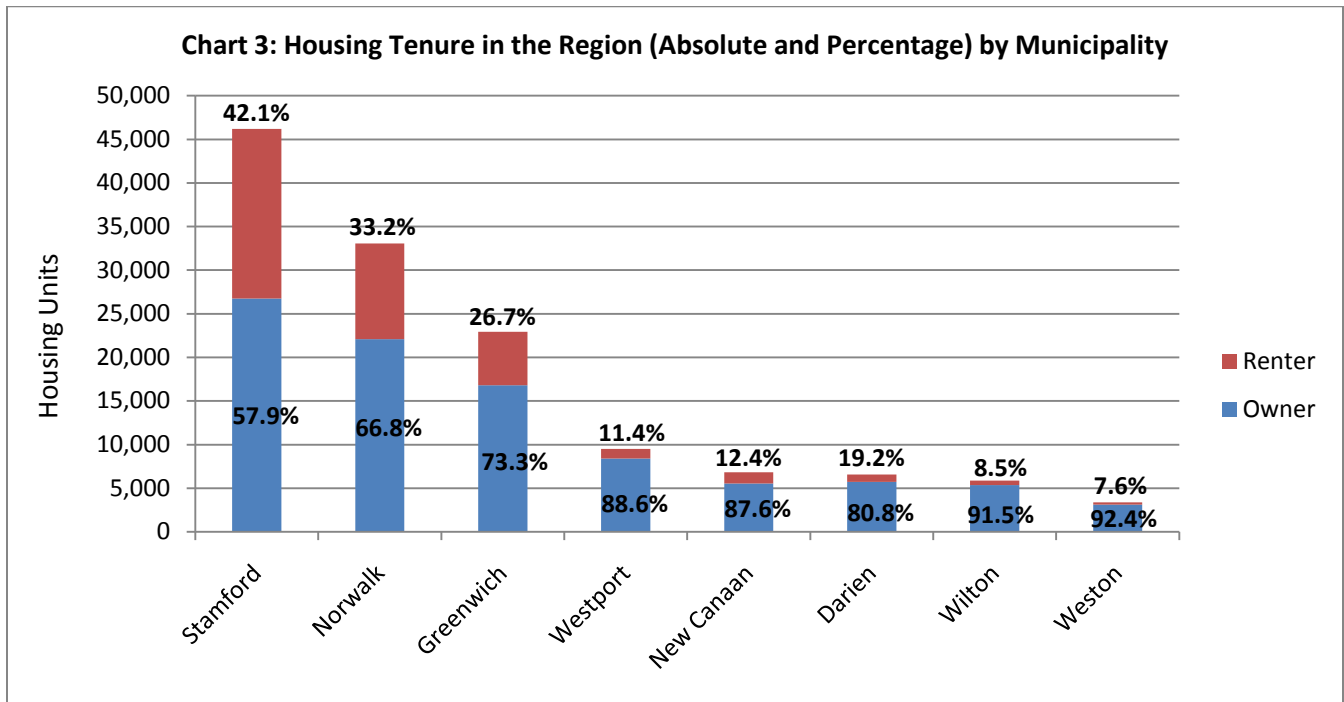
<sup>2</sup> Unoccupied housing units are considered vacant. Vacancy status is determined by the terms under which the unit may be occupied, e.g. for rent, for sale, or for seasonal use only.

Since the 2000 Decennial Census, the total number of housing units in the South Western Region increased from 139,224 to 146,792, an increase of 5.4%. This rate is lower than that of the state, which increased by 7.4% in the same time period. Since the 2000 Decennial Census, the number of vacant units in the Region increased by 82.5% (4,661 units), which is more than twice the state-wide rate of 38.5% (32,499 units) during the same time period. Stamford and Wilton are the only towns in the Region which experienced a larger absolute increase in occupied housing units than vacant housing units. Norwalk stands out as having experienced an increase of only 1.5% in occupied housing units, but an increase of 110.9% in vacant housing units, since the 2000 Decennial Census.<sup>3</sup>

**Housing Tenure**

The number of owner-occupied housing units in the South Western Region is 93,385 (+/- 1280), representing a homeownership rate of 69.9% (+/- 0.8). The greatest percentage of homeownership is in Weston (92.4% +/- 3.1) and Wilton (91.5% +/- 1.8). Stamford and Norwalk have the highest percentage of renter-occupied housing units, at 42.1% (+/- 1.6) and 33.2% (+/- 1.6), respectively.

Since the 2000 Decennial Census, the percentage of owner-occupied housing units in the Region increased by 2.5 percentage-points. The number of owner-occupied housing units in Norwalk, Greenwich, and Stamford increased by 8.9% (+/- 3.3), 5.2% (+/- 3.2), and 4.0% (+/- 3.3), respectively. The overall increase in the number of owner-occupied housing units in the Region since the 2000 Decennial Census was 4.2% (+/- 1.4), as compared to 6.0% (+/- 0.5) at the state level; only New Canaan and Darien experienced a decrease in owner-occupied housing units during this timeframe, by 2.2% (+/- 4.6) and 1.0% (+/- 3.7) respectively.



Source: U.S. Census Bureau, 2005-2009 ACS 5-Year Estimates

<sup>3</sup> This may be due to the construction of new units during the more robust economy, only to go unoccupied during the most recent recession.

## Race and Ethnicity

The racial and ethnic composition of the Region is slightly more diverse than that of the state. Specifically, persons of Hispanic or Latino ethnicity represent a larger proportion of the total population in the Region than at the state-level, at 16.2% compared to 13.4%. The presence of this group has increased at the state level by 49.6% since the 2000 Decennial Census; the Region experienced a slightly greater increase of 54.2%. Asians or Pacific Islanders represent 5.9% of the Region's population and 3.9% of the state's population. The population of Asians or Pacific Islanders in the Region increased by 53.4% since the 2000 Decennial Census. Blacks or African Americans represent 8.6% of the Region's population, which is lower than the state-wide percentage of 10.1%. The population of Blacks or African Americans in the Region decreased by 3.1% since the 2000 Decennial Census.

**Table 5: Number and Percent of Hispanic/Latino Population in the Region**

	<b>2000 Population</b>	<b>2000 % of Population</b>	<b>2010 Population</b>	<b>2010 % of Population</b>
Darien	429	2.2%	743	3.6%
Greenwich	3,846	6.3%	5,964	9.7%
New Canaan	338	1.7%	570	2.9%
Norwalk	12,966	15.6%	20,770	24.3%
Stamford	19,635	16.8%	29,188	23.8%
Weston	206	2.1%	336	3.3%
Westport	602	2.3%	932	3.5%
Wilton	269	1.5%	537	3.0%
<b>SW Region</b>	<b>38,291</b>	<b>10.8%</b>	<b>59,040</b>	<b>16.2%</b>
<b>State of CT</b>	<b>320,323</b>	<b>9.4%</b>	<b>479,087</b>	<b>13.4%</b>

Source: U.S. Census Bureau, 2010 Census

The cities of Norwalk and Stamford are the most racially and ethnically diverse towns in the Region; together they are home to nearly 85% of all Hispanics/Latinos in the Region. Persons of Hispanic or Latino ethnicity represent 24.3% and 23.8% of the total population of Norwalk and Stamford, respectively. Norwalk and Stamford also have the largest Black or African-American populations in the Region, representing 14.2% and 13.9%, respectively, of each city's population. Combined, these two cities are home to 93% of the Region's Black or African-American population.

A notable trend since the 2000 Decennial Census is a 16.9% increase in the Black or African-American population at the state level, but a regional decrease of 3.1%. According to 2010 Census data, there is a trend of Black outmigration from the urban centers of Stamford and Norwalk to the smaller municipalities. Wilton and Weston both increased significantly in their Black or African American population, by 69.8% and 48.9%, respectively.

Stamford, Greenwich, and Norwalk have the largest Asian populations in the Region, comprising 8.0%, 6.6%, and 4.9%, respectively, of their total populations. Combined, these three towns are home to 83.3% of the Region's Asian population. The Asian population has increased in all eight municipalities since 2000, ranging from a 27.4% increase in Greenwich to a 73.7% increase in Wilton.

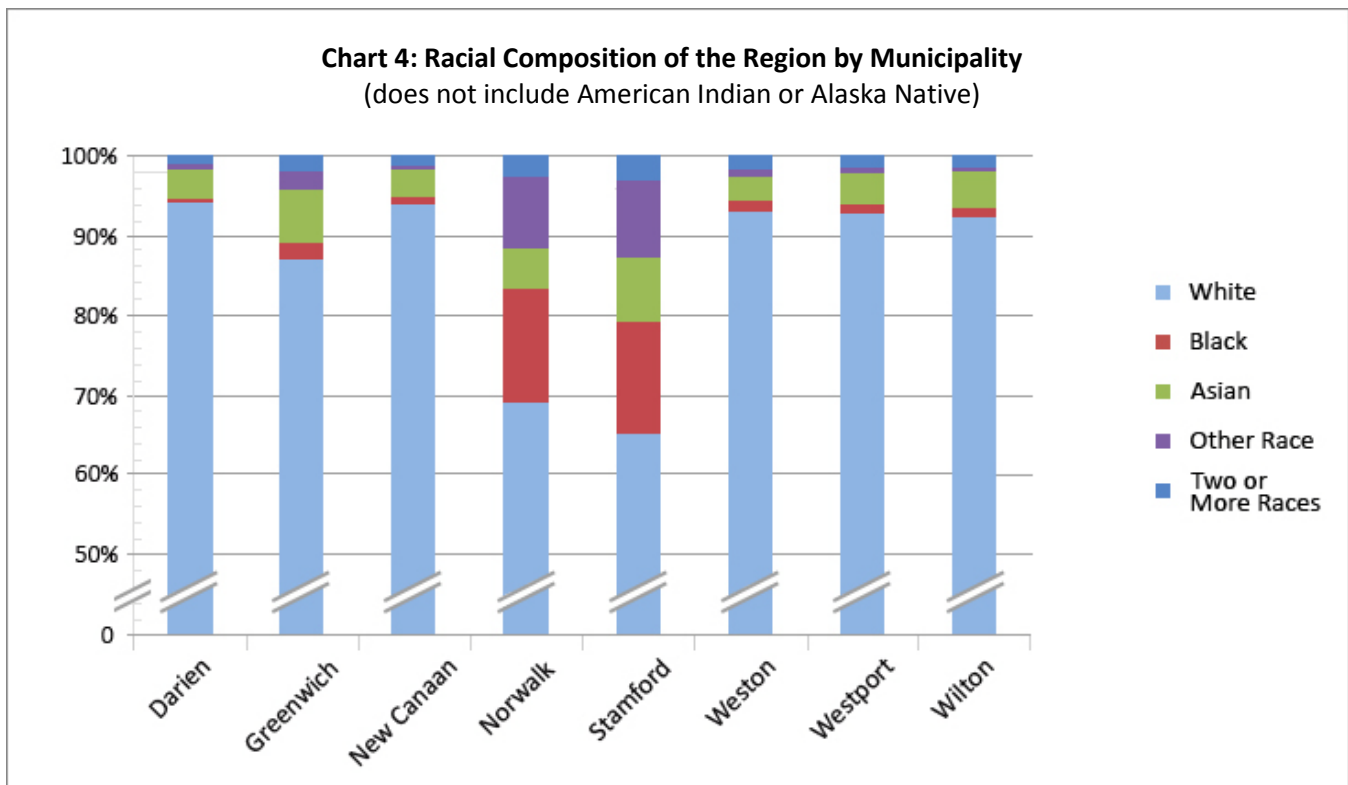
**Table 6: Percent Change in Population by Racial/Ethnic Group in the Region**

2000 to 2010 Percent Change	Total Population	White	Black or African American	Asian or Pacific Islander	Some other race	Two or more races	Hispanic or Latino (of any race)
Darien	5.7%	3.7%	16.9%	56.4%	108.6%	46.5%	73.2%
Greenwich	0.1%	-3.5%	29.2%	27.4%	63.0%	26.5%	55.1%
New Canaan	1.8%	0.0%	-2.0%	49.3%	31.5%	41.1%	68.6%
Norwalk	3.2%	-4.1%	-3.8%	51.6%	114.4%	-1.4%	60.2%
Stamford	4.7%	-2.5%	-5.3%	65.4%	56.4%	7.5%	48.7%
Weston	1.4%	-1.5%	48.9%	44.9%	228.0%	98.0%	63.1%
Westport	2.5%	-0.3%	4.5%	67.6%	54.4%	103.8%	54.8%
Wilton	2.4%	-1.1%	69.8%	73.7%	100.0%	102.1%	99.6%
<b>SW Region</b>	<b>3.1%</b>	<b>-2.2%</b>	<b>-3.1%</b>	<b>53.4%</b>	<b>74.3%</b>	<b>14.1%</b>	<b>54.2%</b>
<b>State of CT</b>	<b>4.9%</b>	<b>-0.3%</b>	<b>16.9%</b>	<b>63.7%</b>	<b>34.8%</b>	<b>23.8%</b>	<b>49.6%</b>

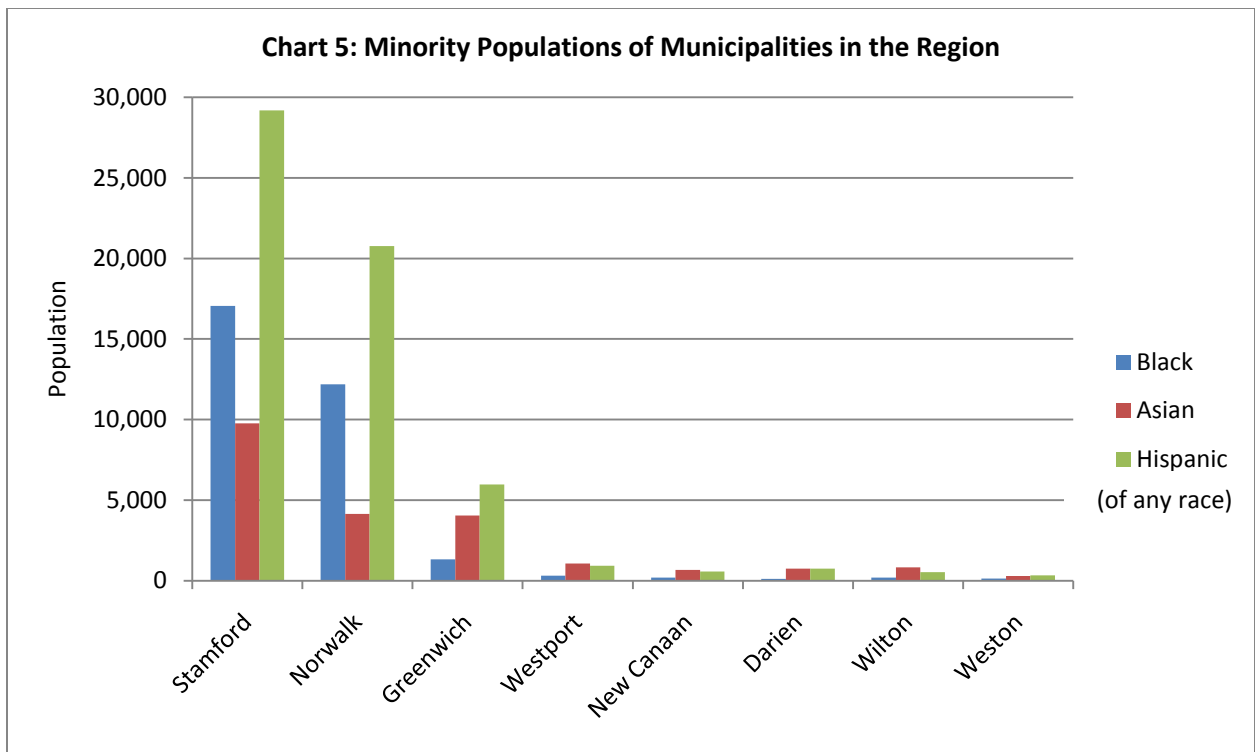
Source: U.S. Census Bureau, 2010 Census

Charts 4 and 5 detail the distribution of the Region’s minority population by town, both in terms of percentage and absolute population. Mapping the data at the Census Tract level (see Figure 1) shows that persons of non-white racial composition are more concentrated in the Stamford neighborhoods of West Side, South End, Downtown, and East End (excluding Shippan), as well as the Norwalk neighborhoods of Central Norwalk and South Norwalk.

**Chart 4: Racial Composition of the Region by Municipality**  
(does not include American Indian or Alaska Native)

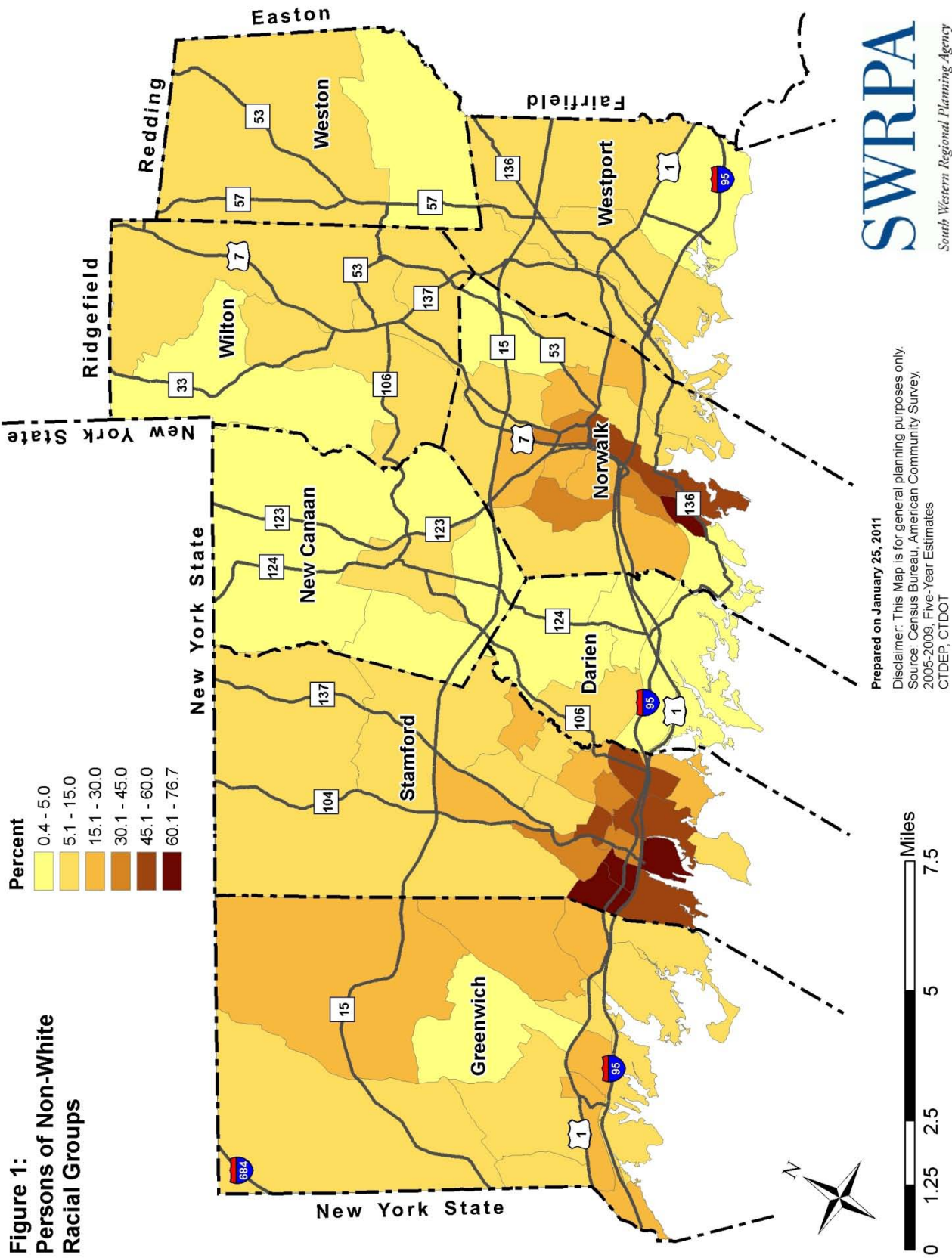


Source: U.S. Census Bureau, 2010 Census



**Source:** U.S. Census Bureau, 2010 Census

**Figure 1:  
Persons of Non-White  
Racial Groups**

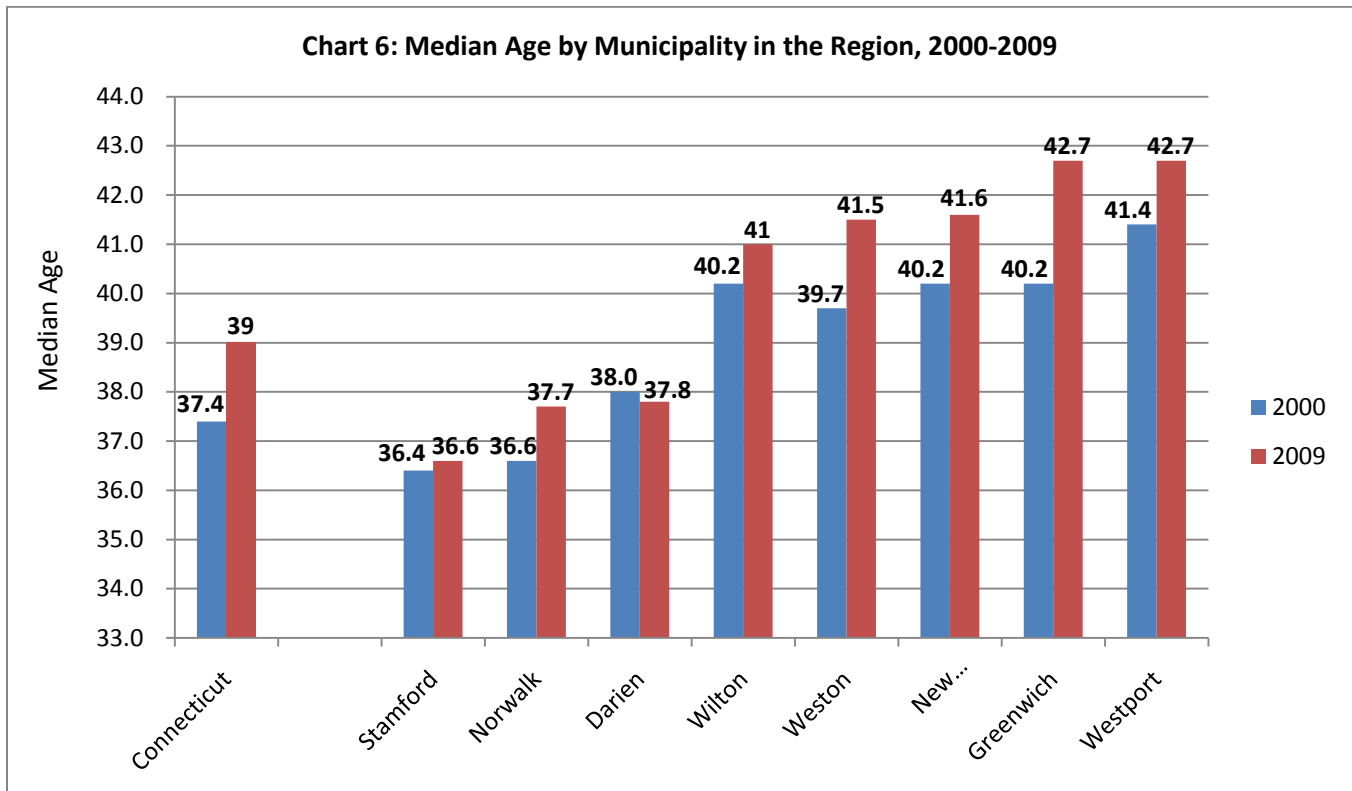


Prepared on January 25, 2011  
 Disclaimer: This Map is for general planning purposes only.  
 Source: Census Bureau, American Community Survey,  
 2005-2009, Five-Year Estimates  
 CTDEP, CTDOT



## Age

Most towns in the Region have a median age higher than the state median of 39.0 (+/- 0.1) years. Stamford, Norwalk, and Darien have median ages lower than the state median, at 36.6 (+/- 0.6), 37.7 (+/- 0.8), and 37.8 (+/- 0.8) years, respectively. Greenwich and Westport have the highest median ages in the Region of 42.7 years each (+/- 0.7, and +/- 0.8, respectively). It is interesting to note that all of the towns in the Region experienced an increase in median age since the 2000 Decennial Census except for Darien, which had a slight decrease (see Chart 6). Darien also has the greatest percentages of children aged 14 and under in the Region. The greatest median age increases since the 2000 Decennial Census occurred in Greenwich and Weston, which increased by 2.5 years (+/- 0.7) and 1.8 years (+/- 1.1), respectively.

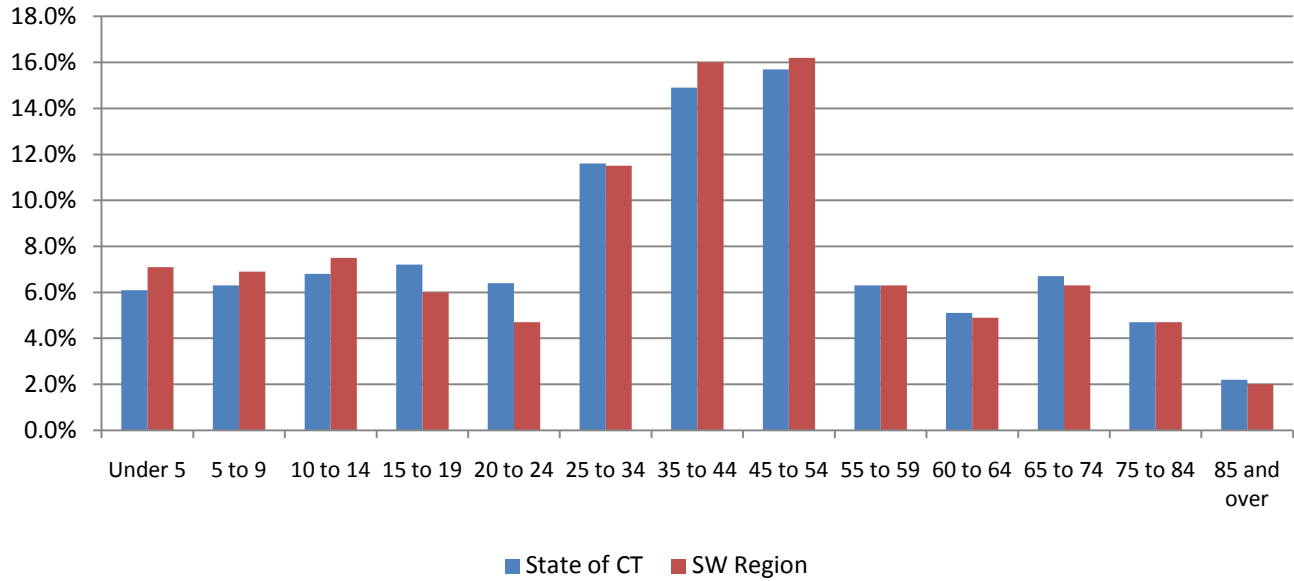


Source: U.S. Census Bureau, 2005-2009 ACS 5-Year Estimates

Comparing the age characteristics of the South Western Region to that of the state reveals more differences than similarities, as shown below in Chart 7. Perhaps the most significant difference can be found in the 15-19 and 20-24 age cohorts. Combined, 13.7% (+/- 0.0) of the state's total population are in these cohorts, compared to only 10.7% (+/- 0.4) of the Region's. Conversely, there is a much higher population in the 35-44 and 45-54 age cohorts in the Region than in the state. The most notable age-related characteristic within the South Western Region is the fewer number of persons in the 20-24 age range,<sup>4</sup> as compared with the state. As is shown in Chart 8, Norwalk and Stamford are the only cities in the Region with more than 3% of their total populations within this age group. Similarly, Stamford and Norwalk have relatively large populations in the 25-34 age cohort, representing 17.2% (+/- 0.8) and 14.2% (+/- 0.9), respectively.

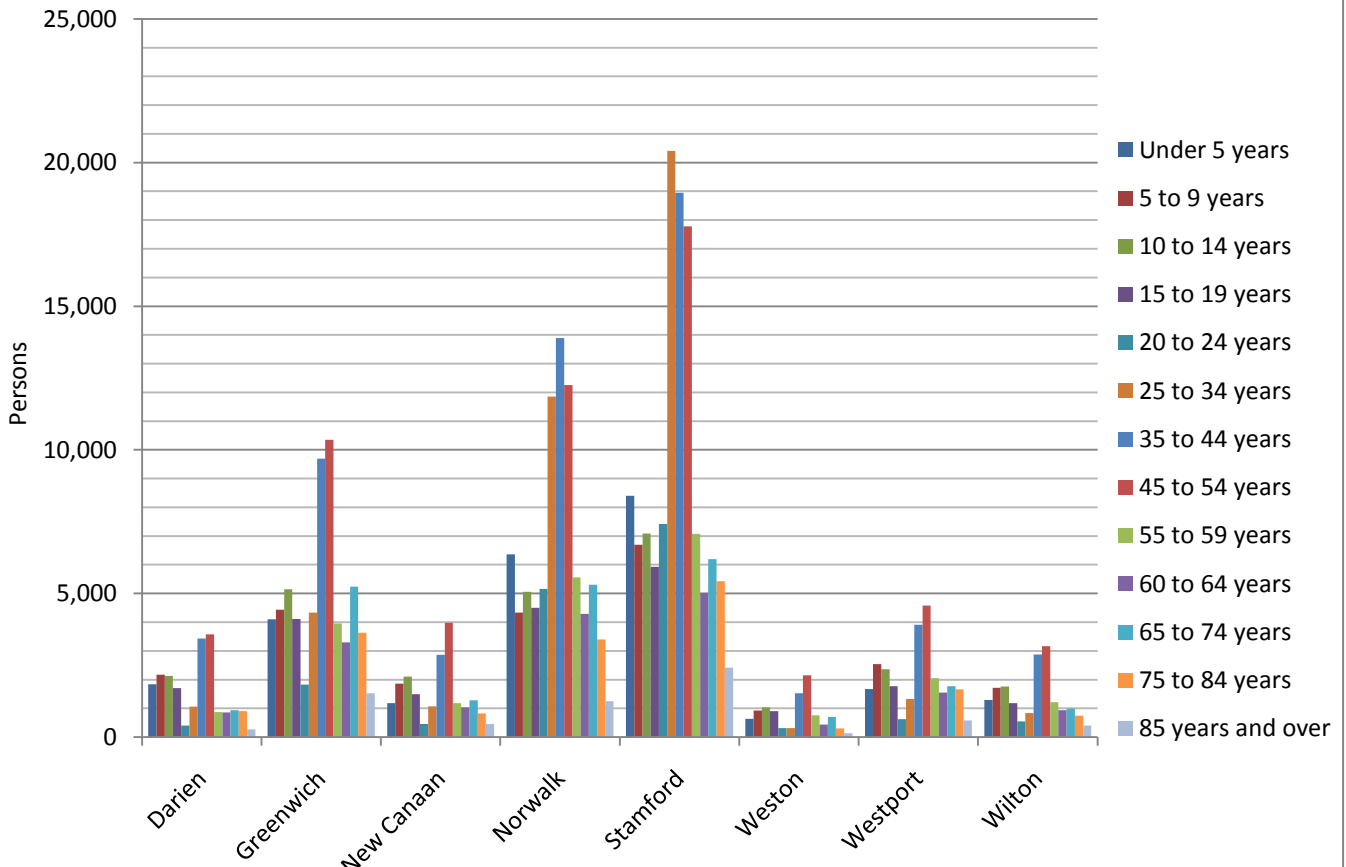
<sup>4</sup> This could partially be attributed to the relative lack of higher educational opportunities within the Region, as well as the relative lack of affordable housing for recent college graduates with entry-level jobs.

**Chart 7: Percentage of Population by Age Cohort by Municipality in the Region**



Source: U.S. Census Bureau, 2005-2009 ACS 5-Year Estimates

**Chart 8: Distribution of Population by Age Cohort by Municipality in the Region**



Source: U.S. Census Bureau, 2005-2009 ACS 5-Year Estimates

**Gender**

In the South Western Region, 51% of the population is female and 49% is male. The gender makeup of the Region is very similar to that of the state. Since the 2000 Decennial Census, the Region’s male population grew by 5,047 persons, or by 3.0%, while the female population declined by 675 persons, or by 0.4%

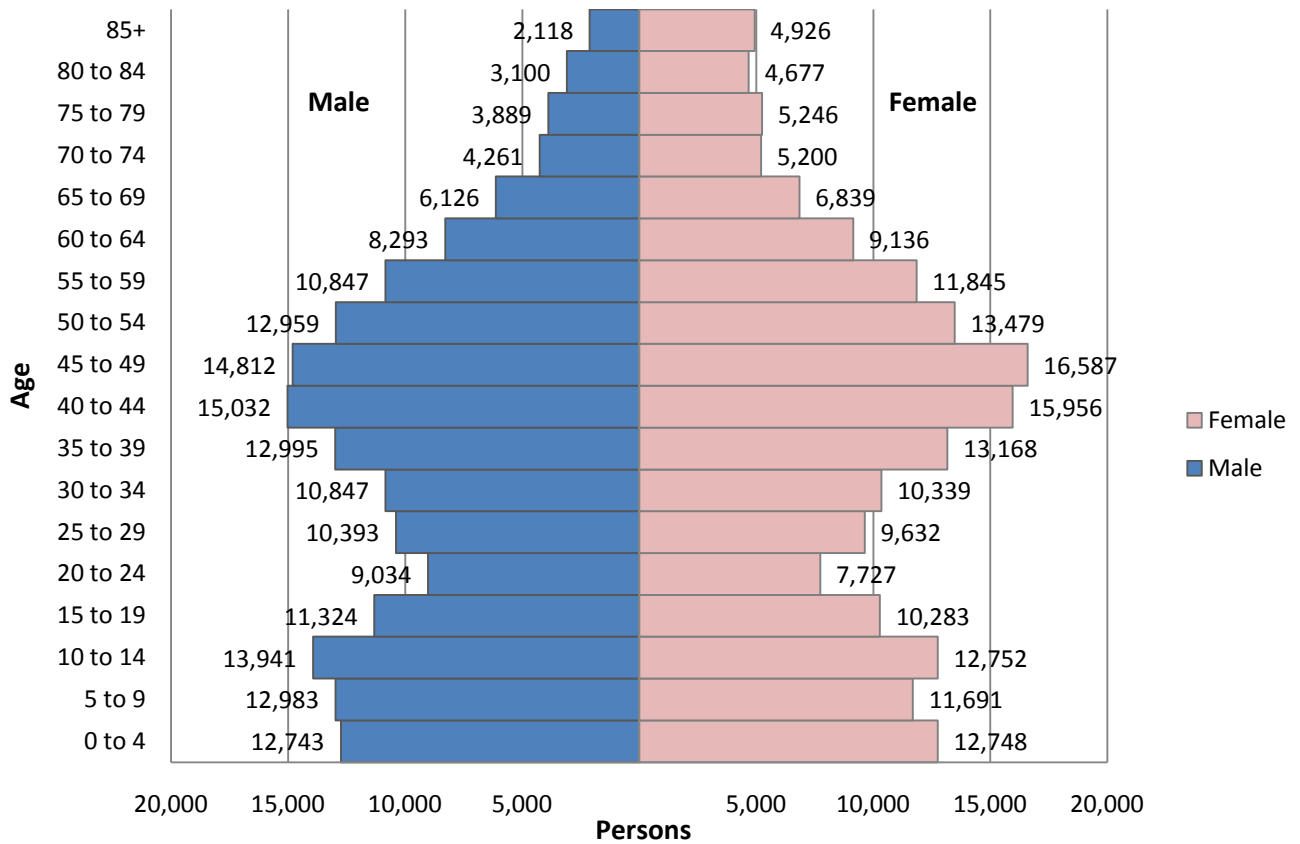
**Table 7: Male and Female Populations in the Region**

2000					
	Total Pop	Male	%	Female	%
SW Region	333,949	170,650	48.2%	172,914	51.8%
State of CT	3,405,565	1,649,319	48.4%	1,756,246	51.6%

2009					
	Total Pop	Male	%	Female	%
SW Region	357,928	175,697	49.1%	182,231	50.9%
State of CT	3,494,487	1,704,135	48.8%	1,790,352	51.2%

Source: U.S. Census Bureau, 2005-2009 ACS 5-Year Estimates, 2000 Census of Population and Housing, Summary File 1

**Chart 9: Distribution of Sex and Age in the Region**



Source: U.S. Census Bureau, 2005-2009 ACS 5-Year Estimates

## **Foreign Born Population**

The South Western Region has a significantly higher proportion of foreign born residents as compared to the state of Connecticut. Foreign born residents account for 23.5% (+/- 0.7) of the total population in the Region, whereas foreign born residents account for 12.8% (+/- 0.2) of the state-wide population. Within the Region, Stamford is the community with the highest number and proportion of foreign born residents, totaling 42,749 persons (+/- 1,631), which represent 36.0% (+/- 1.4) of its total population. Norwalk and Greenwich also have relatively high proportions of foreign born residents, representing 22.7% (+/- 1.5) and 20.6% (+/- 1.4), respectively, of their total populations. Persons living in Stamford, Norwalk, and Greenwich account for 88.5% (+/- 0.4) of the foreign born population in the Region. The number of foreign born residents in the Region grew by 11,883 (+/- 2,512) persons since the 2000 Decennial Census, an increase of 16.5% (+/- 3.4). The foreign born populations of Stamford, Norwalk, Greenwich, and Wilton have grown significantly since the 2000 Decennial Census, increasing by 23.3% (+/- 4.7), 12.2% (+/- 7.6), 9.6% (+/- 7.7), and 33.5% (+/- 19.5), respectively. The state as a whole realized an even larger increase in foreign born residents during this same time period of 20.6% (+/- 1.6).

**Table 8: Foreign Born Population in the Region**

<b>2009</b>	<b>Total Population</b>	<b>+/-</b>	<b>Foreign Born Population</b>	<b>+/-</b>	<b>% of Total Population</b>	<b>+/-</b>
Darien	20,176	59	1,912	305	9.5%	1.5
Greenwich	61,672	78	12,709	890	20.6%	1.4
New Canaan	19,805	26	1,907	388	9.6%	1.9
Norwalk	83,219	42	18,850	1,272	22.7%	1.5
Stamford	118,787	40	42,749	1,631	36.0%	1.4
Weston	10,137	20	714	190	7.0%	1.0
Westport	26,443	20	3,016	931	11.4%	4.6
Wilton	17,689	40	2,089	305	11.8%	1.5
<b>SW Region</b>	<b>357,928</b>	<b>127</b>	<b>83,946</b>	<b>2,512</b>	<b>23.5%</b>	<b>0.7</b>
<b>State of CT</b>	<b>3,494,487</b>	<b>***</b>	<b>446,119</b>	<b>5,830</b>	<b>12.8%</b>	<b>0.2</b>

Source: U.S. Census Bureau, 2005-2009 ACS 5-Year Estimates

## **World Region of Birth of Foreign Born Population**

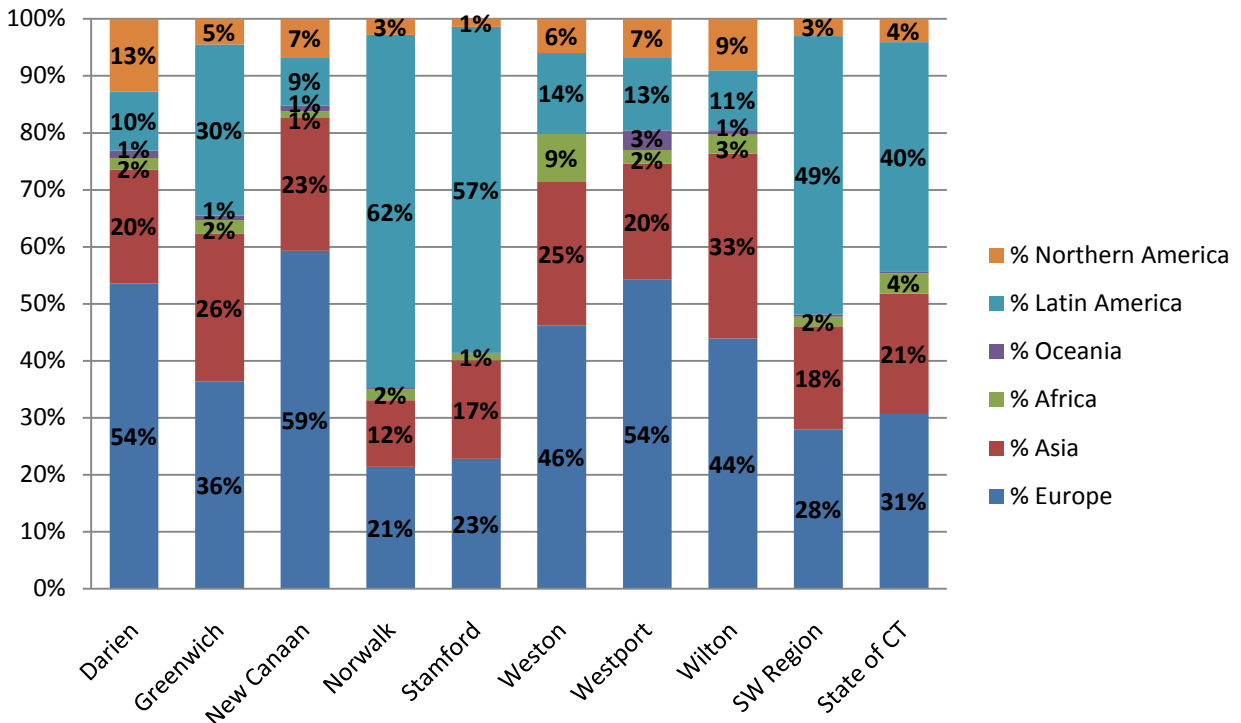
Nearly half (48.9% +/- 2.1) of the foreign born population living in the South Western Region is from Latin America. The other half is from Europe (28.0% +/- 1.3), Asia (18.1% +/- 1.2), Africa, Oceania, and other North American countries (together 5.1% +/- 0.01). The majority of foreign born residents from Latin American countries reside in Stamford and Norwalk, which account for 59.6% (+/- 2.4) and 28.5% (+/- 2.6), respectively, of the Region's total. A large majority, 84.9% (+/- 7.3), of the Region's foreign born residents from Asian countries reside in Stamford, Greenwich, and Norwalk. About half of these persons live in Stamford (48.7% +/- 3.6), 21.6% (+/- 3.2) live in Greenwich, and 14.5% (+/- 2.4) live in Norwalk. Likewise, approximately three-quarters of the Region's foreign born residents from European countries live in Stamford, Greenwich, and Norwalk, accounting for 41.6% (+/- 3.1), 19.7% (+/- 2.6), and 17.2% (+/- 1.5), respectively, of the Region's total.

**Table 9: World Region of Birth of the Foreign Born Population in the Region**

2009	% Europe	+/-	% Asia	+/-	% Africa	+/-	% Oceania	+/-	% Latin America	+/-	% Northern America	+/-
Darien	53.6%	8.5	20.0%	6.2	2.0%	2.2	1.3%	2.0	10.4%	6.1	12.7%	6.3
Greenwich	36.4%	4.8	25.9%	4.0	2.4%	1.4	0.8%	0.5	30.0%	4.3	4.5%	1.3
New Canaan	59.3%	11.6	23.3%	11.2	1.2%	1.2	1.0%	1.2	8.5%	4.3	6.7%	5.8
Norwalk	21.4%	2.4	11.7%	2.0	1.9%	1.0	0.2%	0.4	62.0%	3.4	2.8%	1.1
Stamford	22.8%	2.0	17.3%	1.7	1.2%	0.5	0.1%	0.1	57.2%	2.6	1.4%	0.4
Weston	46.2%	10.6	25.1%	9.9	8.5%	7.0	0.0%	4.8	14.1%	7.5	6.0%	4.3
Westport	54.3%	7.6	20.3%	5.6	2.4%	2.0	3.4%	2.8	12.9%	5.5	6.7%	3.1
Wilton	43.9%	8.2	32.5%	8.5	3.3%	2.3	0.8%	0.9	10.5%	5.6	9.0%	4.4
<b>SW Region</b>	<b>28.0%</b>	<b>1.3</b>	<b>18.1%</b>	<b>1.2</b>	<b>1.7%</b>	<b>0.4</b>	<b>0.4%</b>	<b>0.2</b>	<b>48.9%</b>	<b>2.1</b>	<b>3.0%</b>	<b>0.5</b>
<b>State of CT</b>	<b>30.7%</b>	<b>0.7</b>	<b>21.1%</b>	<b>0.4</b>	<b>3.6%</b>	<b>0.3</b>	<b>0.3%</b>	<b>0.1</b>	<b>40.2%</b>	<b>0.8</b>	<b>4.1%</b>	<b>0.2</b>

Source: U.S. Census Bureau, 2005-2009 ACS 5-Year Estimates

**Chart 10: Composition of Municipalities by World Region of Birth of the Foreign Born Population**



Source: U.S. Census Bureau, 2005-2009 ACS 5-Year Estimates

**Language Spoken at Home and Limited English Proficiency**

The number of residents in the South Western Region, ages 5 years and older, who speak a language other than English in the home is 95,741 (+/- 2,568) persons, or 28.8% (+/- 0.8) of persons 5 years and older. This percentage is higher than that of the state, which is 19.7% (+/- 0.2). Stamford, Norwalk, and Greenwich have higher percentages of residents who speak another language in the home, representing 42.4% (+/- 1.5), 32.2% (+/- 1.8), and 24.1% (+/- 1.8), respectively, of their population 5 years and older. In fact, Stamford, Norwalk, and Greenwich account for 89.3% (+/- 1.2) of all residents 5 years and older in the South Western Region who speak a language other than English at home. Since the 2000 Decennial Census, the number of residents in the Region who speak a language other than English at home has increased by 19.7% (+/- 3.2), compared to an increase of 10.9% (+/- 1.0) at the state level. The two language categories of “Spanish” and “Other Indo-Euro Language” represent nearly 90% of all residents 5 years and older in the Region who speak a language at home other than English, at 48.3% (+/- 1.8) and 39.7% (+/- 1.8), respectively.

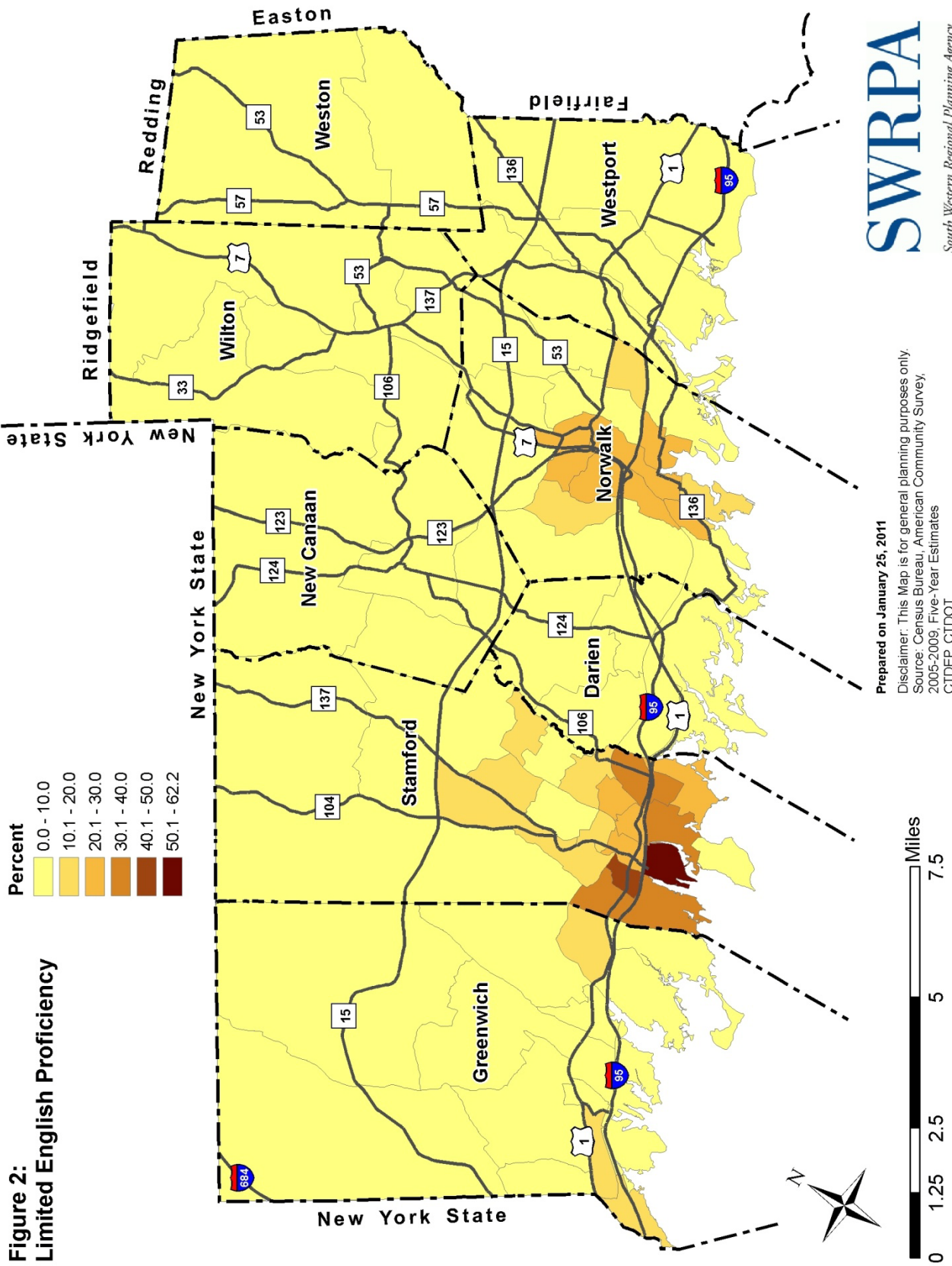
In the South Western Region, 40,384 (+/- 1,723) residents, or 12.1% (+/- 0.5) of residents 5 years and older, have limited English proficiency. This is higher than the state-wide percentage of 7.7% (+/- 0.1). As with “Language Spoken at Home,” Stamford, Norwalk, and Greenwich have much higher percentages of residents with limited English proficiency, representing 95% of such residents in the Region. Of those with limited English proficiency in the Region, 58.6% (+/- 2.5) speak Spanish, 32.0% (+/- 2.2) speak a different Indo-European language, 8.7% (+/- 1.5) speak an Asian or Pacific Islander language, and 0.6% (+/- 0.6) speaks another language. Mapping the data at the Census Tract level (see Figure 2) shows that residents with limited English proficiency are concentrated in the Stamford neighborhoods of Downtown, East Side (excluding Shippan), West Side, and South End, as well as in the Norwalk neighborhoods of Central Norwalk and South Norwalk.

**Table 10: Language Spoken at Home and Residents with Limited English Proficiency in the Region**

2009	Population 5 Years and Older	+/-	% Speak English Only	+/-	% Speak Language Other than English	+/-	% Limited English Proficiency	+/-
Darien	18,333	230	89.5%	2.1	10.5%	2.1	2.1%	0.8
Greenwich	57,573	388	75.9%	1.8	24.1%	1.8	7.0%	1.1
New Canaan	18,619	201	89.6%	2.2	10.4%	2.2	2.6%	1.6
Norwalk	78,856	508	67.8%	1.8	32.2%	1.8	14.6%	1.4
Stamford	110,391	596	57.6%	1.5	42.4%	1.5	20.9%	1.0
Weston	9,501	166	92.7%	2.3	7.3%	2.3	1.0%	0.8
Westport	24,766	292	86.8%	2.3	13.2%	2.3	2.1%	0.6
Wilton	16,398	245	85.6%	2.5	14.4%	2.5	3.8%	1.1
<b>SW Region</b>	<b>332,437</b>	<b>1,015</b>	<b>71.2%</b>	<b>0.8</b>	<b>28.8%</b>	<b>0.8</b>	<b>12.1%</b>	<b>0.5</b>
<b>State of CT</b>	<b>3,281,983</b>	<b>244</b>	<b>80.3%</b>	<b>0.2</b>	<b>19.7%</b>	<b>0.2</b>	<b>7.7%</b>	<b>0.1</b>

Source: U.S. Census Bureau, 2005-2009 ACS 5-Year Estimates

**Figure 2:  
Limited English Proficiency**



**Median Household Income & Per Capita Income**

The median household income for the South Western Region is \$97,015 (+/- 7,302). Every town in the Region has a median household income above that of the state, which is \$67,721 (+/- 389). Stamford and Norwalk are most similar to the state median, at \$76,134 (+/- 1,983) and \$75,695 (+/- 2,907), respectively. The other six towns in the Region have median household incomes significantly higher than the state median, with Weston having the highest median household income of \$206,469 (+/- 28,905).

By inflating the dollar value from the year 2000 to 2009, based on recommended inflation factors<sup>5</sup>, some comparisons can be made between the current ACS data and the 2000 Decennial Census data. Generally, median household income did not change considerably across the Region since the 2000 Decennial Census, except in Wilton and New Canaan, which decreased by approximately 15% and 10%, respectively. Weston’s median household income increased by approximately 10% since the 2000 Decennial Census.

The per capita income for the South Western Region is \$65,409 (+/- \$3,179), which is higher than the state’s per capita income of \$36,468 (+/- 236). Stamford and Norwalk have per capita incomes that are similar to the state, at \$46,928 (+/- 1,948) and \$41,419 (+/- 1,605), respectively. The other six towns of the Region have per capita incomes significantly higher than the state level, with New Canaan having the highest per capita income of \$99,160 (+/- 7,457). Since the year 2000, and adjusting for inflation, per capita income decreased in the Region by 1.3%. Likewise, per capita income for the state decreased by 1.5%. Towns experiencing the greatest percentage decreases in per capita income since the 2000 Decennial Census are Wilton, New Canaan, Darien, and Greenwich, which decreased by 6.9%, 6.1%, 4.8%, and 3.9%, respectively. Stamford increased in per capita income by 4.2% since the 2000 Decennial Census.

**Table 11: Median Household Income, Per Capita Income, and Poverty in the Region**

<b>2009</b>	<b>Per Capita Income (\$)</b>	<b>+/-</b>	<b>Median Household Income (\$)</b>	<b>+/-</b>	<b>% Individuals Below Poverty Line</b>	<b>+/-</b>
Darien	94,953	5,735	181,019	16,397	2.9%	1.3
Greenwich	92,014	4,751	122,092	5,194	3.6%	0.8
New Canaan	99,160	7,457	163,457	19,655	2.3%	1.0
Norwalk	41,419	1,605	75,695	2,907	8.2%	1.2
Stamford	46,928	1,948	76,134	1,983	10.2%	1.3
Weston	97,198	8,818	206,469	28,905	1.5%	0.9
Westport	92,854	5,863	151,233	12,854	2.8%	1.1
Wilton	78,887	5,814	153,179	12,270	2.2%	0.8
<b>SW Region</b>	<b>65,409</b>	<b>3,179</b>	<b>97,015</b>	<b>7,302</b>	<b>6.6%</b>	<b>5.0</b>
<b>State of CT</b>	<b>36,468</b>	<b>236</b>	<b>67,721</b>	<b>389</b>	<b>8.7%</b>	<b>0.2</b>

Source: U.S. Census Bureau, 2005-2009 ACS 5-Year Estimates

<sup>5</sup> The Census Bureau recommends using CPI-U-RS adjustment factors published annually by the Bureau of Labor Statistics (BLS) to adjust 1999 median, mean, and per capita income dollar amounts shown in Summary File 3 to 2009 dollars by multiplying the 1999 dollar amounts by the CPI-U-RS factor of 1.28729056. ([http://www.census.gov/acs/www/guidance\\_for\\_data\\_users/comparing\\_2009](http://www.census.gov/acs/www/guidance_for_data_users/comparing_2009))



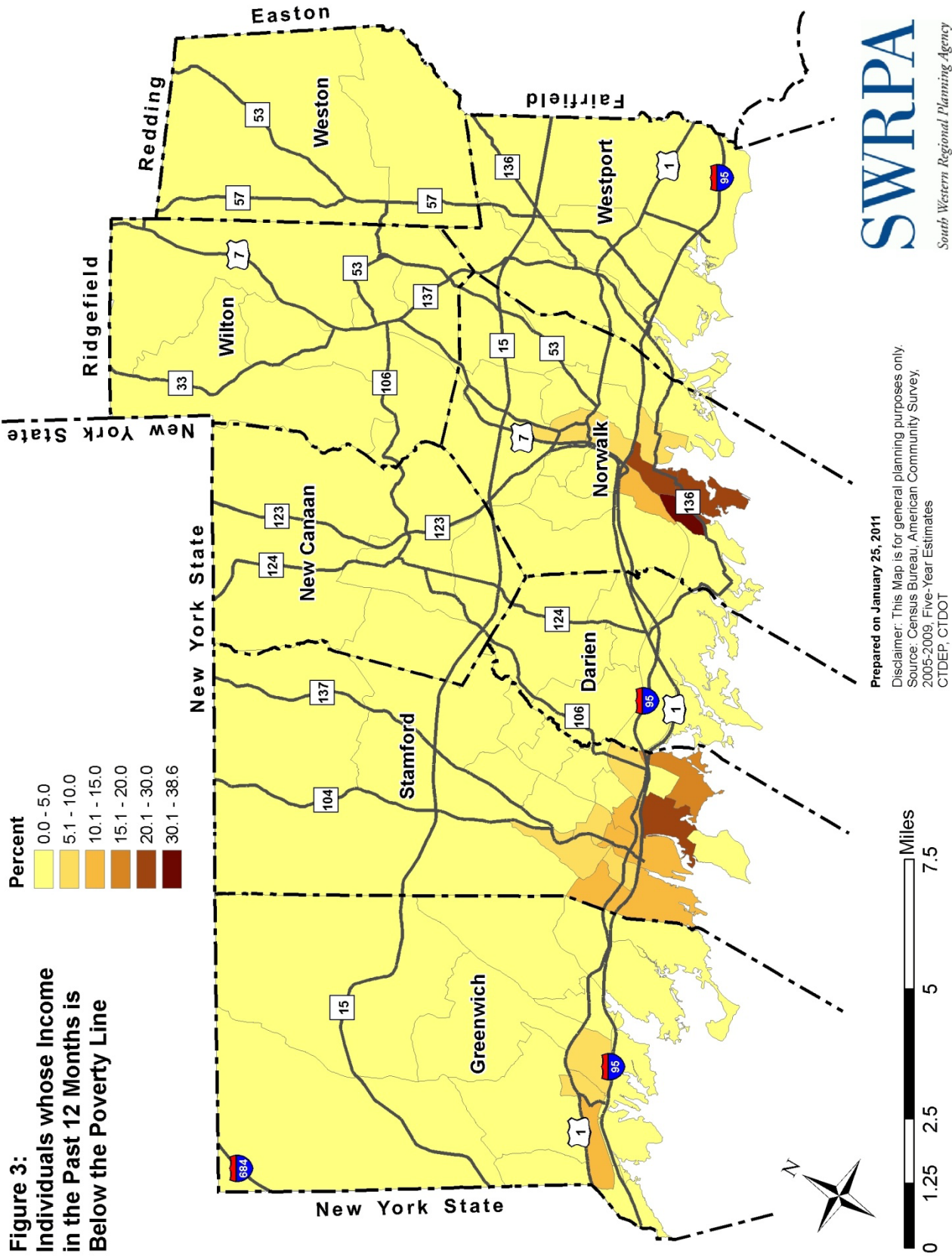
## **Poverty**

Throughout the Region, the percentage of people whose income in the past 12 months was below the poverty line is 6.6% (+/- 5.0), which is lower than the state-wide percentage of 8.7% (+/- 0.2). Exceptions include Stamford and Norwalk, where such persons represent 10.2% (+/- 1.3) and 8.2% (+/- 1.2), respectively, of their total populations. Since the 2000 Decennial Census, four of the eight towns in the Region decreased in their percentage of people below the poverty line.<sup>6</sup> The four towns whose percentage of persons below the poverty line increased are Stamford, Norwalk, Darien, and Westport, whose percentages increased absolutely by 2.3% (+/- 1.3), 1.0% (+/- 1.2), 0.9% (+/- 1.3), and 0.2% (+/- 1.1), respectively. Mapping the data at the Census Tract level (see Figure 3) shows that people whose income in the past 12 months is below the poverty line are highly concentrated in the Stamford neighborhoods of Downtown, East Side (excluding Shippan), West Side, and South End, as well as in the Norwalk neighborhoods of Central Norwalk, and South Norwalk.

---

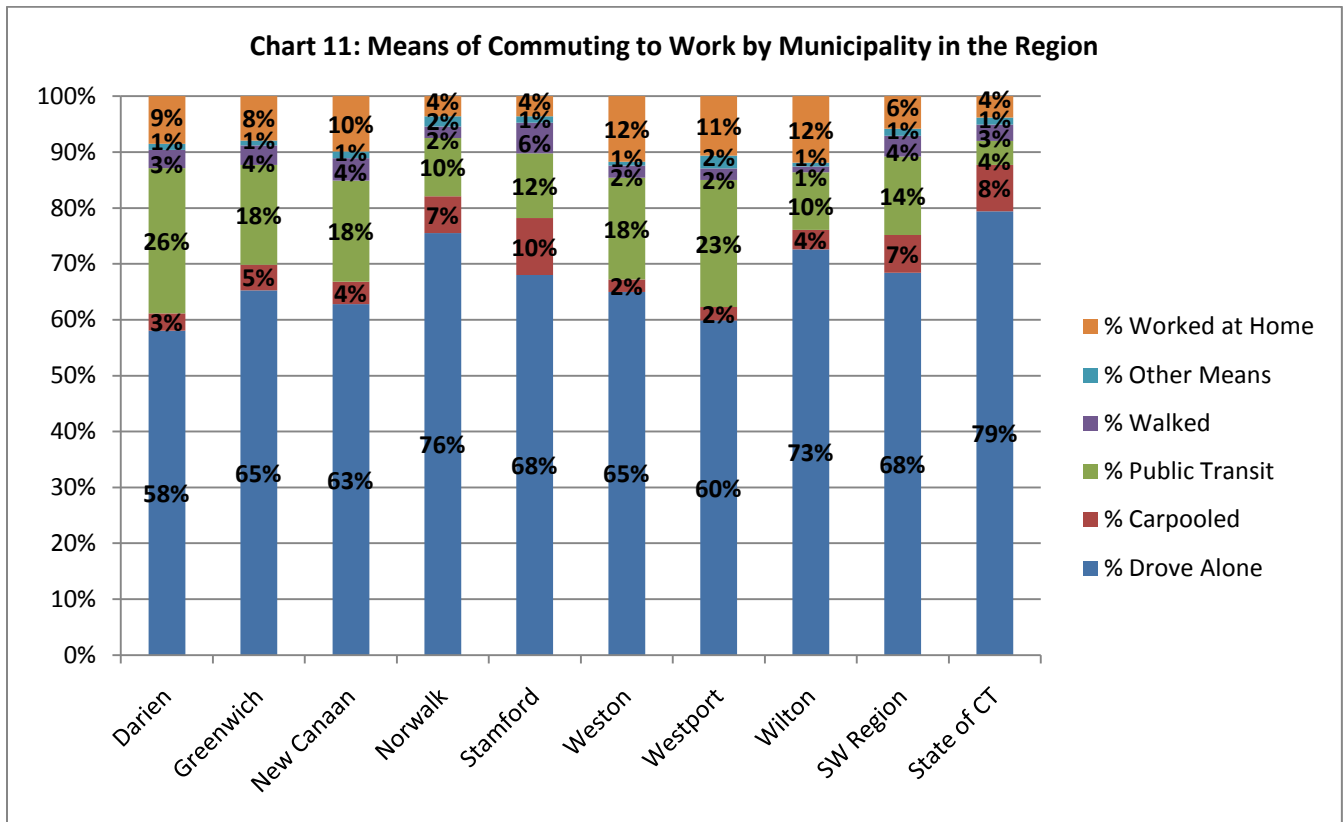
<sup>6</sup> The ACS collects data throughout the year on an on-going, monthly basis and asks for a respondent's income over the "past 12 months." Census 2000, however, collected the income data for a fixed period of time -- "during 1999" (the last calendar year).

**Figure 3:  
 Individuals whose Income  
 in the Past 12 Months is  
 Below the Poverty Line**



### Means of Commuting to Work

In the South Western Region, 68.4% (+/- 0.8) of workers 16 years of age and older drive alone to work. This percentage is less than the state as a whole, where 79.4% (+/- 0.2) of workers drive alone to work. Public transit (14.0% +/- 0.6), carpooling (6.8% +/- 0.5), and walking (3.7% +/- 0.4), are also popular modes of transportation for commuting to work in the Region. Darien is the town in the Region with the highest percentage of workers 16 years and older who commute to work by public transit (26.0% +/- 3.0). Stamford is the town in the Region with the highest percentage of workers 16 years and older who commute to work using carpools (10.2% +/- 1.0). Walking is a popular mode of transportation for commuting to work in Stamford and New Canaan, accounting for 5.5% (+/- 0.9) and 4.0% (+/- 1.5), respectively, of workers 16 years and older.



Source: U.S. Census Bureau, 2005-2009 ACS 5-Year Estimates

Since the 2000 Decennial Census, workers 16 years and older who drove alone to work decreased in the Region by 1.7% (+/- 1.6), compared to an increase of 2.9% (+/- 0.4) at the state level. In the Region, the three modes of transportation that saw the largest increases since the 2000 Decennial Census were public transit<sup>7</sup>, walking, and other means (which includes motorcycles and bicycles), which increased, respectively, by 7.8% (+/- 4.6), 26.0% (+/- 13.8), and 55.1% (+/- 32.6). The percentage of workers 16 years and older who used carpools to commute to work has decreased since the 2000 Decennial Census by -19.7% (+/- 5.9), which is significantly more than the state-wide decrease of -8.1% (+/- 1.9). Carpooling remains a less popular mode of transportation for commuting

<sup>7</sup> The ACS excludes taxicabs in the tabulation category of "public transportation" and includes them in the category "taxicab, motorcycle, bicycle or other means." However, Census 2000 includes taxicabs in the "public transportation" tabulation category.

to work in the Region, where 6.8% (+/- 0.5) of workers 16 years and older carpool, compared to 8.3% (+/- 0.2) at the state-level.

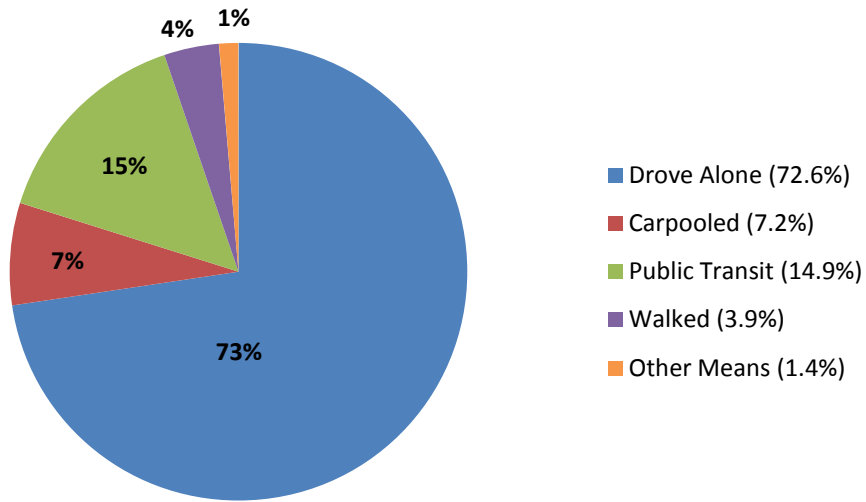
Mapping the data at the Census Tract level (see Figure 4) shows that higher proportions of workers 16 years and older used alternative means of transportation to work in various parts of the Region. Public transit use is more prevalent throughout Darien, Westport, and eastern Greenwich, including the neighborhoods of Old Greenwich, Cos Cob, and Riverside. Carpooling is much more prevalent in the Stamford neighborhood of West End than in the Region as a whole. Walking as a means of commuting to work is more prevalent in the Stamford neighborhoods of West End and South End, as well as Downtown Greenwich. Working at home is more prevalent throughout Wilton, Westport, southern Weston, and northeastern New Canaan, but is most prevalent in northeastern Greenwich.

**Table 12: Means of Commuting to Work in the Region**

<b>2009</b>	<b>Workers 16 Years and Older</b>	<b>+/-</b>	<b>% Drove Alone</b>	<b>+/-</b>	<b>% Carpooled</b>	<b>+/-</b>	<b>% Public Transit</b>	<b>+/-</b>
Darien	7,522	299	58.1%	3.7	3.1%	1.2	26.0%	3.0
Greenwich	26,575	748	65.2%	2.1	4.6%	1.0	17.8%	1.6
New Canaan	7,855	366	62.8%	3.6	4.0%	1.5	18.1%	2.6
Norwalk	43,490	1,061	75.6%	2.0	6.6%	1.0	10.4%	1.2
Stamford	61,817	1,301	68.0%	1.6	10.2%	1.0	11.6%	0.9
Weston	4,257	219	65.0%	8.2	2.2%	1.4	18.2%	3.9
Westport	11,208	343	59.9%	2.7	2.4%	0.9	22.7%	2.1
Wilton	7,514	323	72.6%	2.9	3.5%	1.3	10.3%	1.9
<b>SW Region</b>	<b>170,238</b>	<b>1,968</b>	<b>68.4%</b>	<b>0.8</b>	<b>6.8%</b>	<b>0.5</b>	<b>14.0%</b>	<b>0.6</b>
<b>State of CT</b>	<b>1,701,646</b>	<b>5,825</b>	<b>79.4%</b>	<b>0.2</b>	<b>8.3%</b>	<b>0.2</b>	<b>4.3%</b>	<b>0.1</b>
<b>2009</b>	<b>% Walked</b>	<b>+/-</b>	<b>% Other Means</b>	<b>+/-</b>	<b>% Worked at Home</b>	<b>+/-</b>		
Darien	3.3%	1.2	1.1%	0.6	8.5%	1.6		
Greenwich	3.5%	0.9	0.9%	0.4	7.9%	1.7		
New Canaan	4.0%	1.5	1.2%	0.7	9.9%	2.2		
Norwalk	2.1%	0.5	1.8%	0.8	3.6%	0.5		
Stamford	5.5%	0.9	1.1%	0.4	3.6%	0.5		
Weston	2.2%	1.3	0.7%	0.6	11.7%	3.2		
Westport	2.1%	0.7	2.3%	1.2	10.6%	2.2		
Wilton	1.0%	0.7	0.7%	0.5	11.9%	2.3		
<b>SW Region</b>	<b>3.7%</b>	<b>0.4</b>	<b>1.3%</b>	<b>0.3</b>	<b>5.8%</b>	<b>0.4</b>		
<b>State of CT</b>	<b>2.9%</b>	<b>0.1</b>	<b>1.3%</b>	<b>0.1</b>	<b>3.8%</b>	<b>0.1</b>		

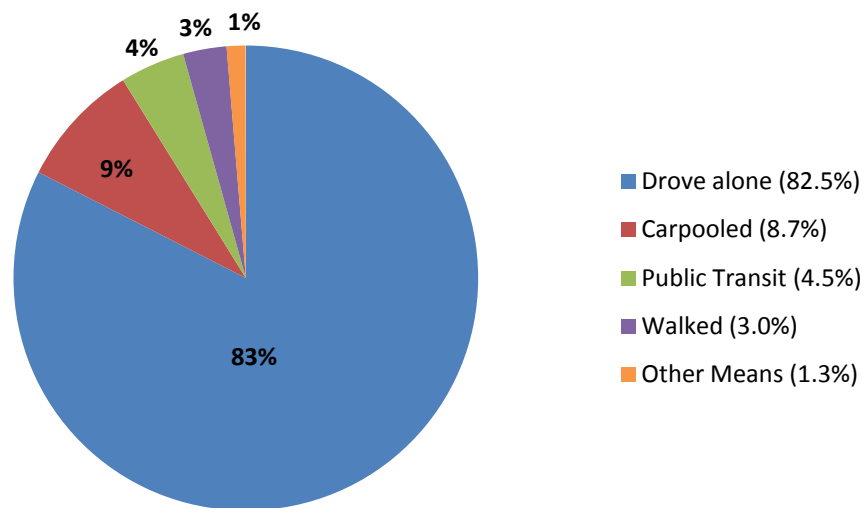
Source: U.S. Census Bureau, 2005-2009 ACS 5-Year Estimates

**Chart 12: Mode Split in the South Western Region (does not include "work at home")**



**Source:** U.S. Census Bureau, 2005-2009 ACS 5-Year Estimates

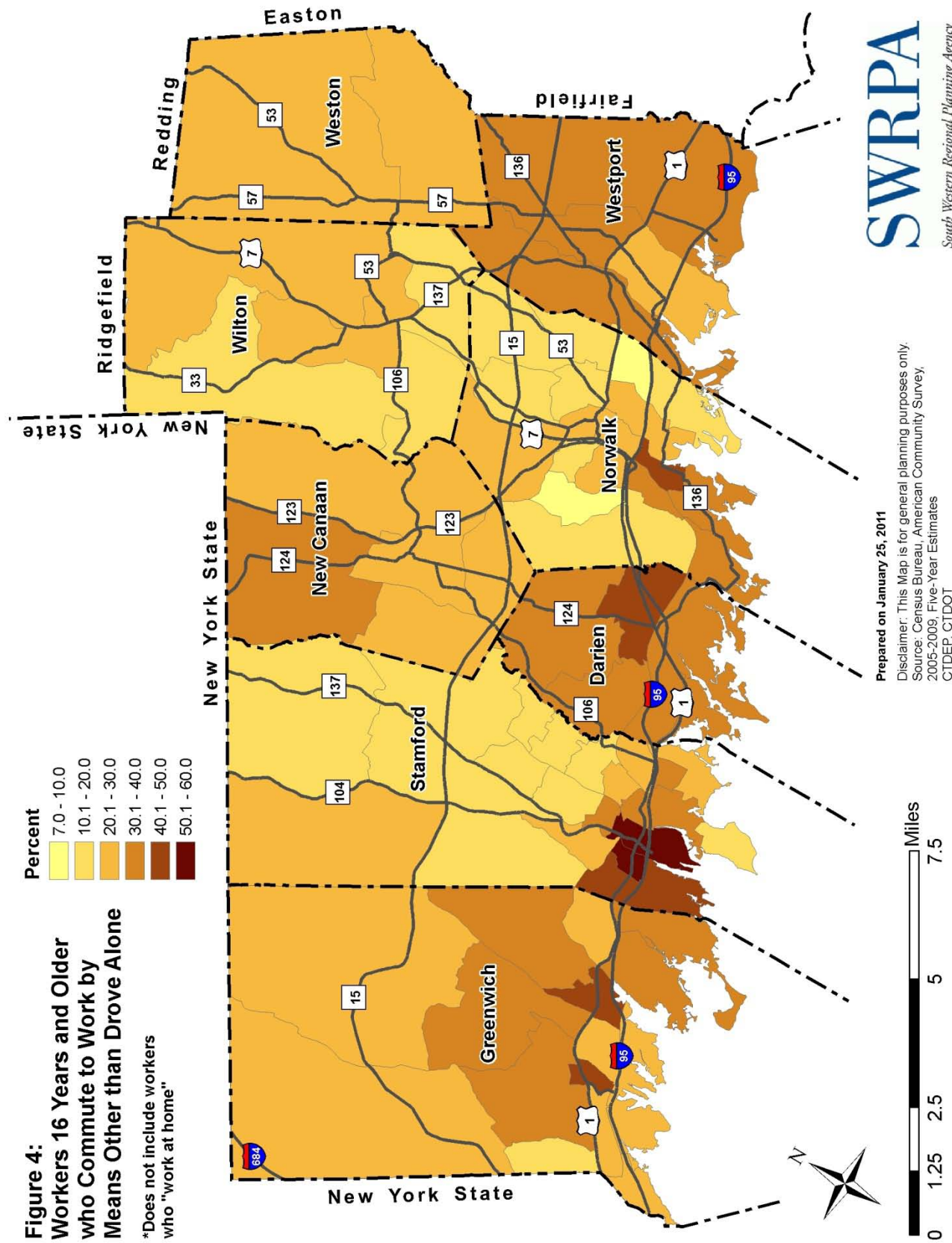
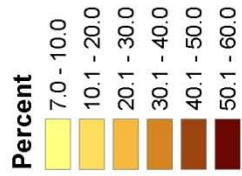
**Chart 13: Mode Split in the State of Connecticut (does not include "work at home")**



**Source:** U.S. Census Bureau, 2005-2009 ACS 5-Year Estimates

**Figure 4:  
Workers 16 Years and Older  
who Commute to Work by  
Means Other than Drove Alone**

\*Does not include workers  
who "work at home"



### **Mean Travel Time to Work**

The mean travel time to work for all commuters in the Region is 28.1 minutes (+/- 0.7), which is higher than the state average of 24.5 minutes (+/- 0.1). Weston has the highest mean travel time to work of 41.0 minutes (+/- 3.8), and Norwalk and Stamford have the lowest mean travel times to work of 24.9 minutes (+/- 0.8) and 25.2 minutes (+/- 0.8), respectively. Overall, the mean travel time for public transit is much higher than for other modes of commuting to work, while Stamford and Norwalk have lower mean travel times to work by public transit than other towns in the Region.<sup>8</sup> Since the 2000 Decennial Census, all towns in the Region, except for Stamford, saw a decrease in mean travel time to work. Stamford increased by 1.2 minutes (+/- 2.0), although it still has a relatively low mean travel time to work as compared to other towns in the Region.

**Table 13: Mean Travel Time to Work in the Region by Transportation Mode**

<b>2009</b>	<b>Total Mean Travel Time (minutes)</b>	<b>+/-</b>	<b>Drove Alone</b>	<b>+/-</b>	<b>Carpooled</b>	<b>+/-</b>	<b>Public Transit</b>	<b>+/-</b>	<b>Walking &amp; Other Means</b>	<b>+/-</b>
Darien	36.4	2.2	22.4	1.8	20.9	7.1	70.3	1.6	30.5	7.9
Greenwich	28.7	1.2	19.7	1.0	19.1	3.0	67.1	8.6	16.9	8.4
New Canaan	33.9	2.7	21.8	1.8	27.2	14.5	80.6	5.0	22.9	8.9
Norwalk	24.9	0.8	21.5	0.6	22.6	2.1	54.1	2.7	16.7	9.3
Stamford	25.2	0.8	20.3	0.6	20.6	1.4	61.2	1.9	19.8	7.0
Weston	41.0	3.8	82.2	2.8	20.7	6.0	91.2	10.8	30.4	14.9
Westport	38.9	2.3	24.4	2.1	21.5	7.0	82.7	3.3	18.6	5.6
Wilton	34.9	2.5	26.4	1.5	26.6	12.9	96.4	5.5	44.5	50.2
<b>SW Region</b>	<b>28.1</b>	<b>0.7</b>	<b>21.4</b>	<b>1.3</b>	<b>21.3</b>	<b>3.4</b>	<b>67.3</b>	<b>7.3</b>	<b>19.8</b>	<b>6.5</b>
<b>State of CT</b>	<b>24.5</b>	<b>0.1</b>	<b>20.2</b>	<b>0.2</b>	<b>21.6</b>	<b>0.9</b>	<b>54.6</b>	<b>12.1</b>	<b>14.6</b>	<b>2.6</b>

Source: U.S. Census Bureau, 2005-2009 ACS 5-Year Estimates

### **Educational Attainment**

Overall, the South Western Region has a much higher level of educational attainment as compared to the state of Connecticut, with higher percentages of residents with a high school diploma or a bachelor's degree or higher, and a lower percentage of residents without a high school diploma. In the Region, 53.1% (+/- 0.9) of residents 25 years and older have a bachelor's degree or higher, as compared to the statewide percentage of 35.1% (+/- 0.3). Weston has the highest percentage of residents 25 years and older with a bachelor's degree or higher at 80.0% (+/- 3.2). Since the 2000 Decennial Census, residents 25 years and older with a bachelor's degree or higher increased by 5.9% (+/- 1.8) in the Region. This was outpaced by the state's overall increase of 14.0% (+/- 0.8). The percentage of residents 25 years and older in the Region without a high school diploma decreased by 28.7% (+/- 4.1) since the 2000 Decennial Census. This decrease is higher than that of the state, which decreased by 25.0% (+/- 1.1) in the same time period.

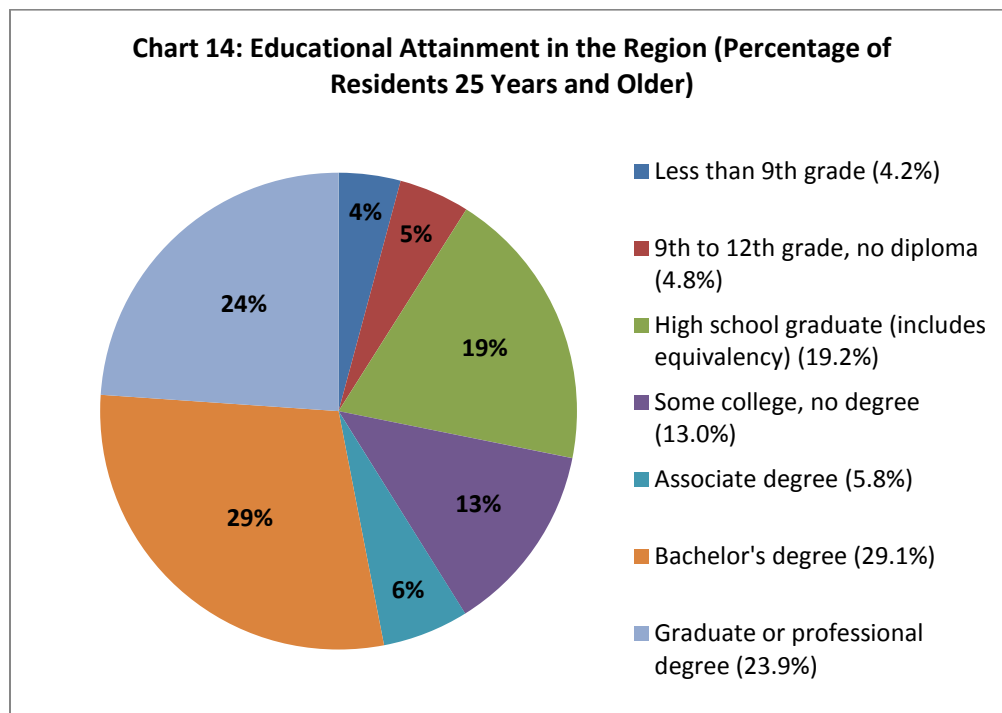
<sup>8</sup> These trends may be explained by residents living in the more suburban areas of the Region commuting longer distances by rail to New York City or regional employment centers, while residents in Stamford and Norwalk commuting to New York City by rail have shorter commutes due to their proximity as well more availability of express train service.



**Table 14: Educational Attainment in the Region**

2009	Population 25 Years and Older	+/-	% No High School Diploma	+/-	% High School Graduate or Higher	+/-	% Bachelor's Degree or Higher	+/-
Darien	11,913	199	2.7%	1.7	97.3%	0.9	75.0%	2.3
Greenwich	42,044	498	5.8%	0.9	94.2%	0.8	62.2%	1.7
New Canaan	12,696	277	3.8%	1.4	96.2%	1.4	73.9%	3.1
Norwalk	57,812	825	13.5%	1.4	86.5%	1.3	38.4%	1.5
Stamford	83,259	970	11.9%	1.0	88.1%	1.0	43.5%	1.4
Weston	6,325	179	0.7%	0.6	99.3%	0.6	80.0%	3.2
Westport	17,465	296	2.8%	0.1	97.2%	0.9	74.2%	1.9
Wilton	11,188	266	3.4%	1.0	96.6%	1.1	70.2%	3.4
<b>SW Region</b>	<b>242,702</b>	<b>1,475</b>	<b>9.0%</b>	<b>0.5</b>	<b>91.0%</b>	<b>0.8</b>	<b>53.1%</b>	<b>0.9</b>
<b>State of CT</b>	<b>2,344,192</b>	<b>476</b>	<b>11.8%</b>	<b>0.2</b>	<b>88.2%</b>	<b>0.2</b>	<b>35.1%</b>	<b>0.3</b>

Source: U.S. Census Bureau, 2005-2009 ACS 5-Year Estimates



Source: U.S. Census Bureau, 2005-2009 ACS 5-Year Estimates