

# ENHANCE PEDESTRIAN, BICYCLE AND TRANSIT OPTIONS

# 12

## 12.1. Overview

In the on-line survey conducted as part of preparing this POCD, participants clearly indicated that they desired better provisions for pedestrians, bicycles, and transit. These issues were also supported in the telephone survey conducted as part of the 2007 POCD and support seems to have grown since that time.

With regard to pedestrians and bicycles, residents are advocating for walking and biking “systems” that make sense. While individual projects of sidewalk segments and bike lanes are valued, residents appear to really want them to tie into an overall network that enhances their quality of life and improve livability. Residents also observed that such systems / networks could also help reduce traffic congestion, reduce pollution, and enhance public safety for those people who are already walking or biking.



Enhanced pedestrian, bicycle and transit options will help make Westport a more sustainable community by encouraging alternative modes of transportation, reducing pollution, improving community health, and enhancing the overall quality of life of residents.

### Goal

Improve the facilities throughout Westport for pedestrians and cyclists, including those with disabilities.

**Pedestrians**



**Cyclists**





In the on-line survey, participants were asked whether they agreed or disagreed with the following statement:

***Westport needs a better pedestrian system in areas outside of Downtown and Saugatuck.***

Strongly agree	41%
Agree	36%
Not sure	8%
Disagree	11%
Strongly disagree	4%

#### 2007 POCD Survey

In the telephone survey conducted as part of the 2007 POCD:

- 61 percent saw a need for more sidewalks along Post Road / Route 1, and
- 55 percent felt more sidewalks were needed in residential neighborhoods,

#### What About ...?

*Will driverless cars and similar technologies make it safer for pedestrians or more dangerous?*

## 12.2. Improve Facilities For Pedestrians

There is interest in Westport for more and better facilities for pedestrians. In the on-line survey, 77% of participants felt that Westport needs a better pedestrian system in areas outside of Downtown and Saugatuck Center.

The Town recently completed a sidewalk along Imperial Avenue as part of a pedestrian linkage between Downtown and Saugatuck Center. This sidewalk segment has been well received and is well utilized. Westport should continue to add sidewalks where possible.

It has been the policy of the Town of Westport to encourage or require sidewalks in the higher density areas around Westport Center, Saugatuck Center and the Post Road. To provide more and better opportunities for pedestrian safety and access, the Plan recommends that:

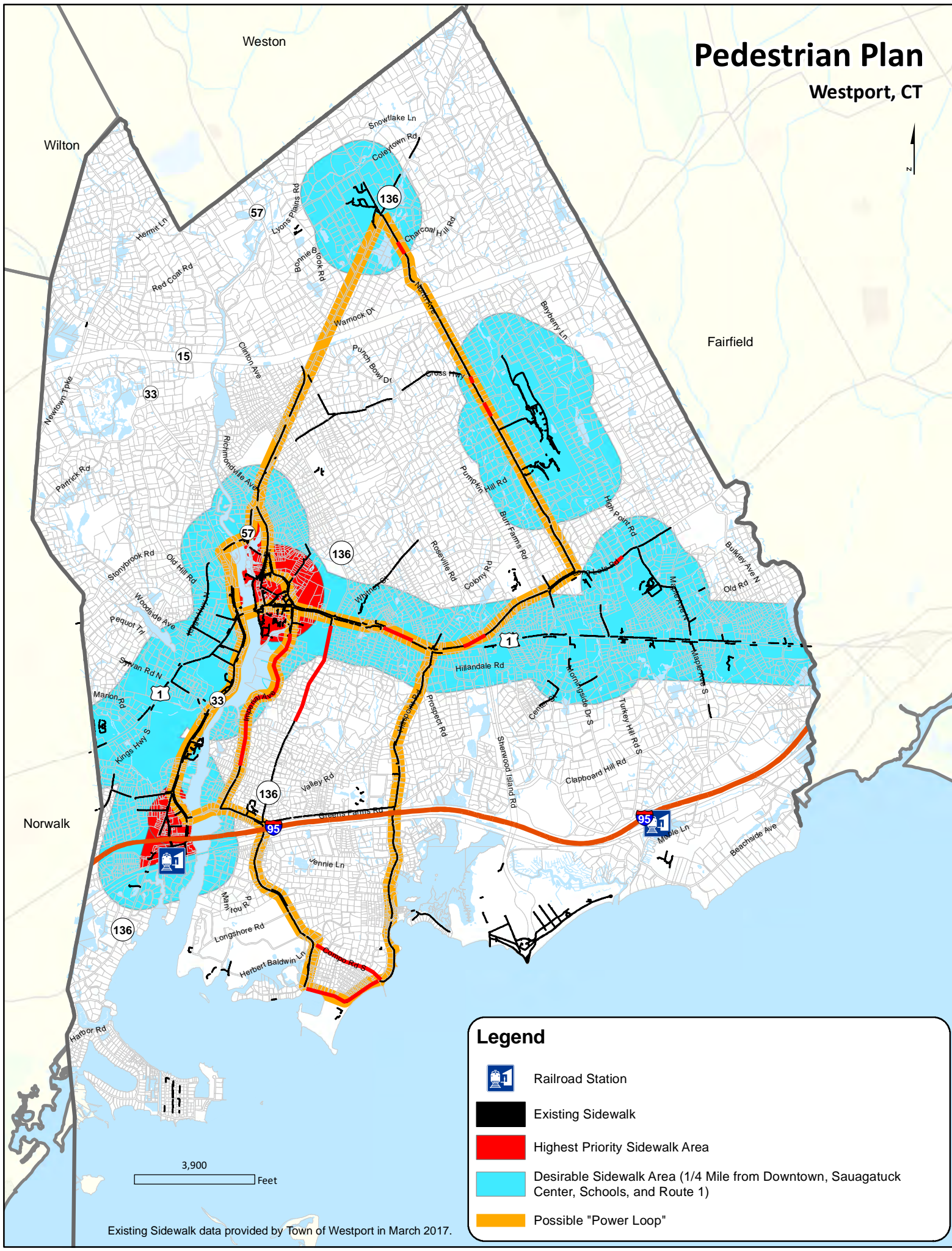
- sidewalks continue to be required in and near Downtown,
- sidewalks continue to be required in and near Saugatuck Center,
- sidewalks continue to be required along the Post Road,
- sidewalk connections be provided to connect Downtown to Saugatuck on Imperial Avenue and Riverside Avenue to create a “loop”
- sidewalk connections be provided along Easton Road, North Avenue and other streets to create a “power loop”
- sidewalks be provided near schools to encourage walking
- sidewalks be considered arterial and collector roads, and
- any gaps in the sidewalk system be closed, and
- pedestrian crosswalks and pedestrian lighting be provided, where appropriate.

To support sidewalks and pedestrians, Westport should create a bicycle / pedestrian committee and encourage it to address relevant issues.

A. PEDESTRIANS		Leader	Partners
1.	Create a better pedestrian system throughout Westport.	PBC	PW
<input type="checkbox"/>	a. Create a committee dedicated to promoting bicycle / pedestrian use and addressing bicycle and pedestrian issues.	FS	BOS RTM
2.	Continue to add sidewalks where possible to provide more and better opportunities for pedestrian safety and access.	PBC	PW CT-DOT
3.	Continue to require sidewalks as part of private development in appropriate areas (such as business zones).	PZC	
4.	Maintain and improve the existing sidewalks in Westport	PW	CT-DOT PBC
5.	Provide pedestrian crosswalks and pedestrian lighting where appropriate	PW	PBC PD CT-DOT
		Code legend is on inside back cover	

# Pedestrian Plan

## Westport, CT



### Legend



Railroad Station



Existing Sidewalk



Highest Priority Sidewalk Area



Desirable Sidewalk Area (1/4 Mile from Downtown, Sauagatuck Center, Schools, and Route 1)



Possible "Power Loop"

3,900 Feet

Existing Sidewalk data provided by Town of Westport in March 2017.





In the on-line survey, participants were asked whether they agreed or disagreed with the following statement:

**Westport needs to do more to provide for cyclists (routes, bike lanes, pavement markings, signs, bike racks, etc.).**

Strongly agree	40%
Agree	29%
Not sure	8%
Disagree	14%
Strongly disagree	8%

#### 2007 POCD Survey

In the telephone survey conducted as part of the 2007 POCD:

- 69 % of respondents felt that Westport needed more facilities and trails for bicycles.

#### What About ...?

*Will driverless cars and similar technologies free up more roadway space for bicyclists?*

## 12.3. Improve Facilities For Bicycles

There is also strong interest in Westport for more and better facilities for bicycles. To support bicycling, Westport should create a bicycle / pedestrian committee and encourage it to:

- oversee the establishment and marking of bicycle lanes, where appropriate (especially considering the CT-DOT transition to 11' travel lanes),
- oversee the repair and maintenance of bicycle lanes, and
- promote bicycle use.

The committee should also consider the potential for bicycle commuting and the need for bicycle facilities (racks, lockers, etc.) at the train stations, business locations, or elsewhere.

While bicycle routes in Westport will need to be "on-road", some routes could be looked at first. For example, Westport could strive to create one or more "power loops" (see map on page 103) where bicycle use would be promoted with striped shoulders and signage.

A. BICYCLES		Leader	Partners
1.	Create a better bicycle system throughout Westport.	PBC	PW
<input type="checkbox"/>	a. Deploy signage and pavement markings as appropriate to inform vehicles and drivers about bicycle usage.	PW	PBC
2.	Continue to make better provisions for cycling (bike lane, shared right-of-way, and other approaches) where possible.	PW	PBC CT-DOT
3.	Consider the need for bicycle facilities (racks, lockers, etc.) at the train stations, business locations, or elsewhere.	PBC	CT-DOT PZC
		Code legend is on inside back cover	

Photo-simulation of a Bike Lane

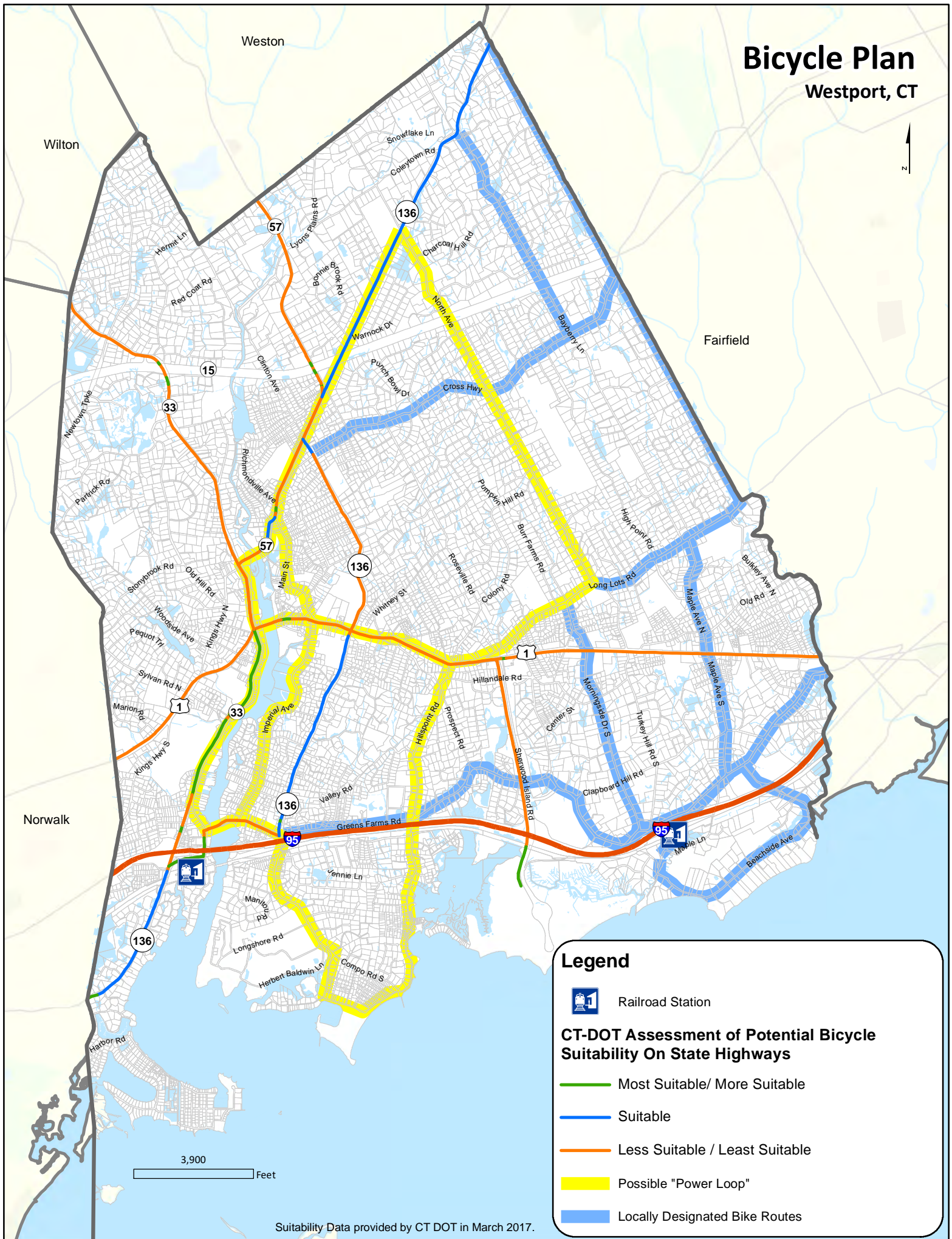


Cyclists



# Bicycle Plan

## Westport, CT



### Legend



Railroad Station

### CT-DOT Assessment of Potential Bicycle Suitability On State Highways

Most Suitable/ More Suitable

Suitable

Less Suitable / Least Suitable

Possible "Power Loop"

Locally Designated Bike Routes

Suitability Data provided by CT DOT in March 2017.



## 12.4. Continue To Support Rail Transit

Metro North Railroad provides railroad service for Westport residents and workers from two stations - Saugatuck and Green's Farms. Service is available to and from stations on the New Haven line including Bridgeport, Stamford, and Grand Central Terminal in Manhattan.

This service is extensively used by local residents and workers and is a significant asset to Westport. Westport should continue to support these rail services.

A. RAIL TRANSIT	Leader	Partners
1. Continue to support Metro-North rail services to and from Westport.	Town	
Code legend is on inside back cover		

Saugatuck Station



Saugatuck Station



Greens Farms Station



Greens Farms Station



## 12.5. Continue To Support Bus Transit

The Norwalk Transit District, with financial support from the Town of Westport, provides a variety of transit services in the community.

### Fixed Route Services

Route(s)	Primary Function
<b>Coastal Link</b>	Service along Route 1 from Norwalk to Milford (service in Westport is from Main Street and Jesup Green)
<b>Train Station Shuttles</b>	Shuttle routes to/from Saugatuck Station and to/from Green's Farms in the morning and afternoon peak hours



In the on-line survey, participants were asked whether they agreed or disagreed with the following statement:

***Westport needs more / better transit services.***

Strongly agree	27%
Agree	35%
Not sure	14%
Disagree	19%
Strongly disagree	5%



## What About ...?

*Will driverless cars and similar technologies replace fixed route transit services?*

Even though ridership is modest on the “Coastal Link” and railroad shuttle routes, these transit services meet a wide variety of local needs for both residents and workers.

There is expected to be increasing cost pressure on these services in the future. Operating costs continue to rise and state / federal funding that helps support these services may not be adequate to maintain the current level of service. In such a situation, the Town will need to increase the funding it provides or the level of service will need to decrease further. In the on-line survey, about 62 percent of participants indicated that Westport needs more and better transit services, not less.

Westport should strive to preserve the service provided by the Norwalk Transit District for those who need it, those who use it because of the convenience it provides, and for those who like to know the service is available for the situations where they may need it.

### Paratransit

Westport contracts with the Norwalk Transit District to provide a “Door-to-Door” service which provides service by appointment (or on-call) to:

- persons age 65 or older within Westport, and
- persons with a qualifying disability to destinations within the Coastal Link service area.

Since the number of older residents is expected to increase in the future, a growing demand is anticipated for the “Door-To-Door” service.

A. BUS TRANSIT		Leader	Partners
1.	Continue to support fixed route bus services to, from and within Westport.	Town	CT-DOT WTD
2.	Continue to support paratransit bus services to, from and within Westport.	Town	
		Code legend is on inside back cover	



# ADDRESS VEHICULAR TRANSPORTATION ISSUES

# 13

## 13.1. Overview

Frustration with the roadway system and traffic congestion is a topic of regular conversation in Westport. For some people, that frustration affects their behavior and causes them to act discourteously to other drivers. As noted in the Community Character section of the POCD, these discourteous drivers affect the overall quality of life of all the people they encounter.

Since it is not likely to be possible to widen roadways or intersections to reduce congestion or stop people from travelling, Westport will have to figure out how to make do with the roadway system it has. In other words, the overall approach will be work strategically to maintain a safe and efficient roadway system and seek to reduce traffic congestion on all roads and at all intersections.



Addressing vehicular transportation issues will help make Westport a more sustainable community by improving overall traffic safety, reducing congestion, and improving efficiency.

### Goal

Maintain a safe and efficient roadway system and seek to reduce traffic congestion.

Traffic



Traffic



### What About ...?

*Will wayfinding software such as Waze make it easier or harder to manage traffic congestion and circulation in Westport?*

*Will new delivery approaches like Peapod and Amazon drones help address traffic issues in Westport?*

## 13.2. Address Roadway Safety / Capacity Issues

Traffic congestion is a regional problem, not just a local one. Delays on Interstate 95 can snarl local traffic within Westport. Likewise, new development, both within Westport as well as within nearby communities, has a cumulative effect that contributes to traffic congestion.

Since Westport has two interchanges with Interstate 95 and two interchanges with the Merritt Parkway, traffic funneling to these interchanges from within Westport and adjacent communities can cause congestion in Westport.

Capacity and congestion can also be an issue on other roads in the community. Many businesses are located along the Post Road and traffic can get congested from the number of driveways and traffic signals.

Traffic safety is also an important issue. Discourteous drivers often violate one or more traffic rules and this creates unsafe situations for themselves and others.

For areas with congestion and safety issues, Westport will continue to work with the Western Connecticut Council of Governments (WestCOG) and the Connecticut Department of Transportation to obtain state and federal funding to address them. However, any improvements (even on State highways), need to be conducted in a way that respects the character of Westport and do not create an undue burden on the community. In certain cases, such as the Cribari Bridge, some improvements may simply not be appropriate.

I-95 Congestion



Route 1 Congestion



#### Limited Access Roads

Roads designed to carry very large volumes of traffic at high speed. They provide no access to abutting properties and have grade separated interchanges with ramps providing the only access.

Examples:

- Interstate 95
- Merritt Parkway



#### Arterial Roads

Roads carrying moderate to heavy volumes of traffic, often providing access to limited access roads and connecting important points within the community and the region.

Examples:

- Post Road (Route 1)
- Route 33
- Compo Road
- Green's Farm Road



#### Collector Roads

Roads carrying traffic between points in the community and collecting traffic from residential neighborhoods for distribution to arterials and/or other points.

Examples:

- Bayberry Lane
- Newtown Turnpike
- Imperial Avenue



#### Local Roads

Roads primarily providing access to individual properties and carrying traffic that has its destination or origin within the neighborhood. May be public or private.

Examples:

- Other streets in Westport



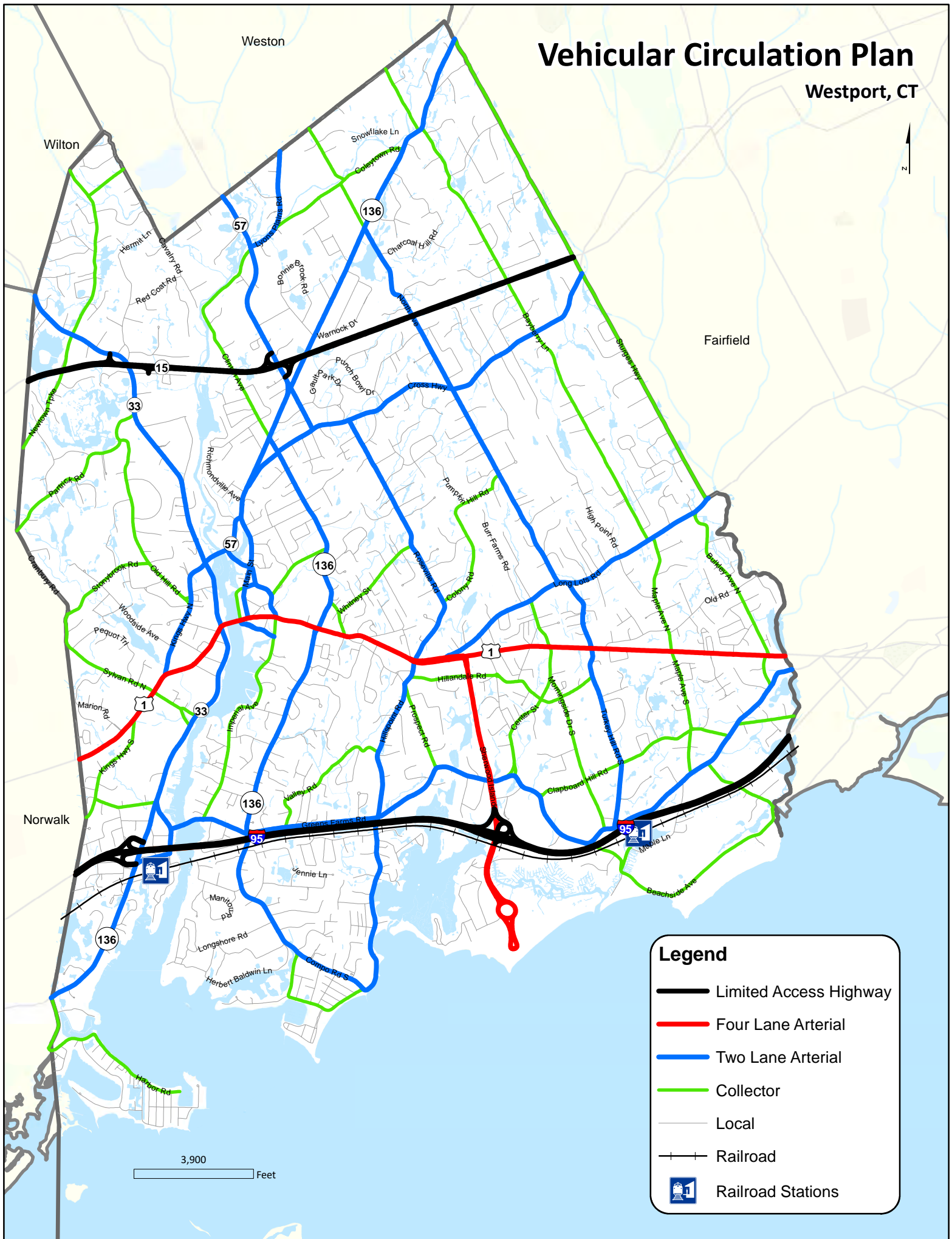


## Road Classifications

<b>Limited Access Roads</b>	<ul style="list-style-type: none"> <li>• Interstate 95</li> </ul>	<ul style="list-style-type: none"> <li>• Merritt Parkway</li> </ul>
<b>Four Lane Arterials</b>	<ul style="list-style-type: none"> <li>• Post Road (Route I)</li> </ul>	<ul style="list-style-type: none"> <li>• Sherwood Island Connector</li> </ul>
<b>Arterials</b>	<ul style="list-style-type: none"> <li>• Route 33</li> <li>• Route 57</li> <li>• Route 136</li> <li>• Avery Place</li> <li>• Compo Road (N and S)</li> <li>• Cross Highway</li> <li>• Ferry Lane (not E or W)</li> <li>• Green's Farm Road</li> <li>• Hillspoint Road</li> <li>• Jesup Road</li> </ul>	<ul style="list-style-type: none"> <li>• Kings Highway North</li> <li>• Long Lots Road</li> <li>• Lyons Plains Road</li> <li>• Main Street</li> <li>• Myrtle Avenue</li> <li>• North Avenue</li> <li>• Riverside Avenue</li> <li>• Roseville Road</li> <li>• Saugatuck Avenue</li> <li>• Turkey Hill Rd (N and S)</li> </ul>
<b>Collector Streets</b>	<ul style="list-style-type: none"> <li>• Bayberry Lane</li> <li>• Beachside Avenue</li> <li>• Broad Street</li> <li>• Bulkley Avenue (N and S)</li> <li>• Center Street</li> <li>• Clapboard Hill Road</li> <li>• Clinton Avenue</li> <li>• Coleytown Road</li> <li>• Colony / Pumpkin Hill / Terhune</li> <li>• Compo Beach Rd / Soundview Drive</li> <li>• East Main Street</li> <li>• Evergreen Avenue</li> <li>• Harbor Road / Duck Pond Road</li> <li>• Hillandale Road</li> <li>• Imperial Avenue</li> <li>• Kings Highway South</li> </ul>	<ul style="list-style-type: none"> <li>• Maple Avenue (N and S)</li> <li>• Morningside Drive (N and S)</li> <li>• New Creek Road</li> <li>• Newtown Turnpike</li> <li>• Old Hill Road</li> <li>• Parker Harding</li> <li>• Partrick Road</li> <li>• Prospect Road</li> <li>• Stony Brook Road</li> <li>• Sturges Highway</li> <li>• Sylvan Road (N and S)</li> <li>• Sylvan Lane</li> <li>• Treadwell Avenue</li> <li>• Valley Road</li> <li>• Westway Road</li> <li>• Whitney Street</li> </ul>

# Vehicular Circulation Plan

Westport, CT



**Legend**

- Limited Access Highway
- Four Lane Arterial
- Two Lane Arterial
- Collector
- Local
- Railroad
- Railroad Stations



In the on-line survey, participants were asked whether they agreed or disagreed with the following statement:

***The roadway system in Westport is adequate for meeting community needs.***

Strongly agree	7%
Agree	50%
Not sure	8%
Disagree	27%
Strongly disagree	8%

***Traffic congestion is a problem in Westport.***

Strongly agree	41%
Agree	37%
Not sure	4%
Disagree	17%
Strongly disagree	1%

**What About ...?**

*Will driverless cars or on-demand services like Uber or Lyft help us address transportation issues?*

One of the reasons that congestion can be an issue on major roadways is the number of driveways and curb cuts. The POCD recommends that Westport implement an “access management” approach to reduce the number of driveways and interconnect commercial sites so that they share driveways. This approach will maintain (or even increase) capacity along major roadways. Access / parking easements should be obtained as part of every application in commercial zones so that this can be implemented over time. Alternatively, the Town and WestCOG / CT-DOT could undertake a project to reduce the number of driveways and curb cuts along Route 1.



**Example Of Shared Driveways In A Commercial Area**





Westport has a comprehensive inventory of pavement conditions of local streets, called a pavement management system. This is used to prioritize road maintenance and repairs in order to minimize costs over time. This program should continue.



In the on-line survey, participants were asked whether they agreed or disagreed with the following statement:

***Westport does a good job maintaining local roads.***

Strongly agree	11%
Agree	64%
Not sure	3%
Disagree	19%
Strongly disagree	4%

A. ROADWAY SAFETY / CAPACITY		Leader	Partners
1. Seek appropriate ways to reduce traffic congestion.		Town	PD PW WCOG CT-DOT
2. Continue to work with WestCOG and CT-DOT to obtain state and federal funding to address areas with congestion and safety issues in ways that are appropriate for Westport.		Town	
3. Implement an “access management” approach to reduce the number of driveways and interconnect commercial sites so that they share driveways.		PZC	PD WCOG CT-DOT
4. Continue to maintain local roadways.		PW	
5. Continue to use the pavement management system to prioritize maintenance and repairs of local roads in order to minimize costs over time.		PW	
6. Maintain a road classification system that is coordinated with the zoning regulations and other land use policies.		PZC	
<input type="checkbox"/> a. Coordinate the road classification map in the POCD with the references in the Zoning Regulations.		PZC	
		Code legend is on inside back cover	

**Pavement Management  
(Crack Sealing)**



**Pavement Management  
(Pavement Reclamation)**





In the on-line survey, participants were asked whether they agreed or disagreed with the following statement:

***Westport needs more parking at the train stations.***

Strongly agree	27%
Agree	35%
Not sure	14%
Disagree	19%
Strongly disagree	5%

### What About ...?

*Will on-line apps help us better provide for train station parking or will they reduce the need for parking since people may use driverless cars or on-demand services?*

## 13.3. Address Train Station Parking

There has been considerable discussion in Westport regarding parking at the train stations, especially at Saugatuck. Residents have expressed frustration that there is not enough parking at the train stations when they want it yet it is difficult to get consensus on what to do about it.

As was recommended in the 2007 POCD, a parking study was undertaken for the Saugatuck and Green's Farms Rail Stations. As a result of the study, a number of improvements were implemented including:

- Parking expansion (133 spaces were added),
- Area improvements (pedestrian, lighting, pavement and drainage),
- Addressing deferred maintenance, and
- Operational improvements.

Some issues were deferred in order to be considered as part of the Saugatuck TOD study and some issues were deferred for further consideration. Some of the issues deferred for further consideration included:

- Increasing the parking fees to market rates,
- Updating the lease arrangements with CT-DOT, and
- Investigating a "smart parking system" to be able to display parking availability in real time.

A. TRAIN STATION PARKING	Leader	Partners
1. Seek ways to improve train station parking arrangements in ways that are appropriate for Westport.	Town	CT-DOT
<i>Code legend is on inside back cover</i>		

**Saugatuck Station Parking**



**Green's Farms Station Parking**



# ADDRESS COMMUNITY FACILITY NEEDS

# 14

## 14.1. Overview

Community facilities and services contribute significantly to Westport's community character and its quality of life. The key purpose of the Plan of Conservation and Development is to evaluate strategic long-term options and state a broad outline for physical space to meet anticipated community needs both present and future.



Addressing community facility needs will help make Westport a more sustainable community by meeting community needs and desires in the most efficient and economical way.

### Goal

Provide for community facilities to meet the needs of Westport residents.

Compo Beach



Town Hall





## Westport Community Facilities

### GENERAL GOVERNMENT

Town Hall

### EDUCATION FACILITIES

Staples High School  
Bedford Middle School  
Coleytown Middle School  
Coleytown Elementary School  
Green's Farms School  
Kings Highway School  
Long Lots School  
Saugatuck School

### SAFETY / EMERGENCY SERVICES

Station 1 - Post Road Fire Station  
Station 4 - Saugatuck Fire Station  
Station 5 – Greens Farms Fire Station  
Station 6 - Coleytown Fire Station  
  
Westport Police Dept. / Animal Control  
Westport Volunteer EMS

### PUBLIC WORKS

Public Works Garage / Transfer Station  
Water Pollution Control Facility

### HOUSING AUTHORITY

Canal Park  
Hales Court  
Hidden Brook  
Sasco Creek

### RECREATION FACILITIES

#### BEACH

Burying Hill Beach  
Compo Beach  
Old Mill Beach  
Canal Beach

#### OTHER OUTDOOR FACILITIES

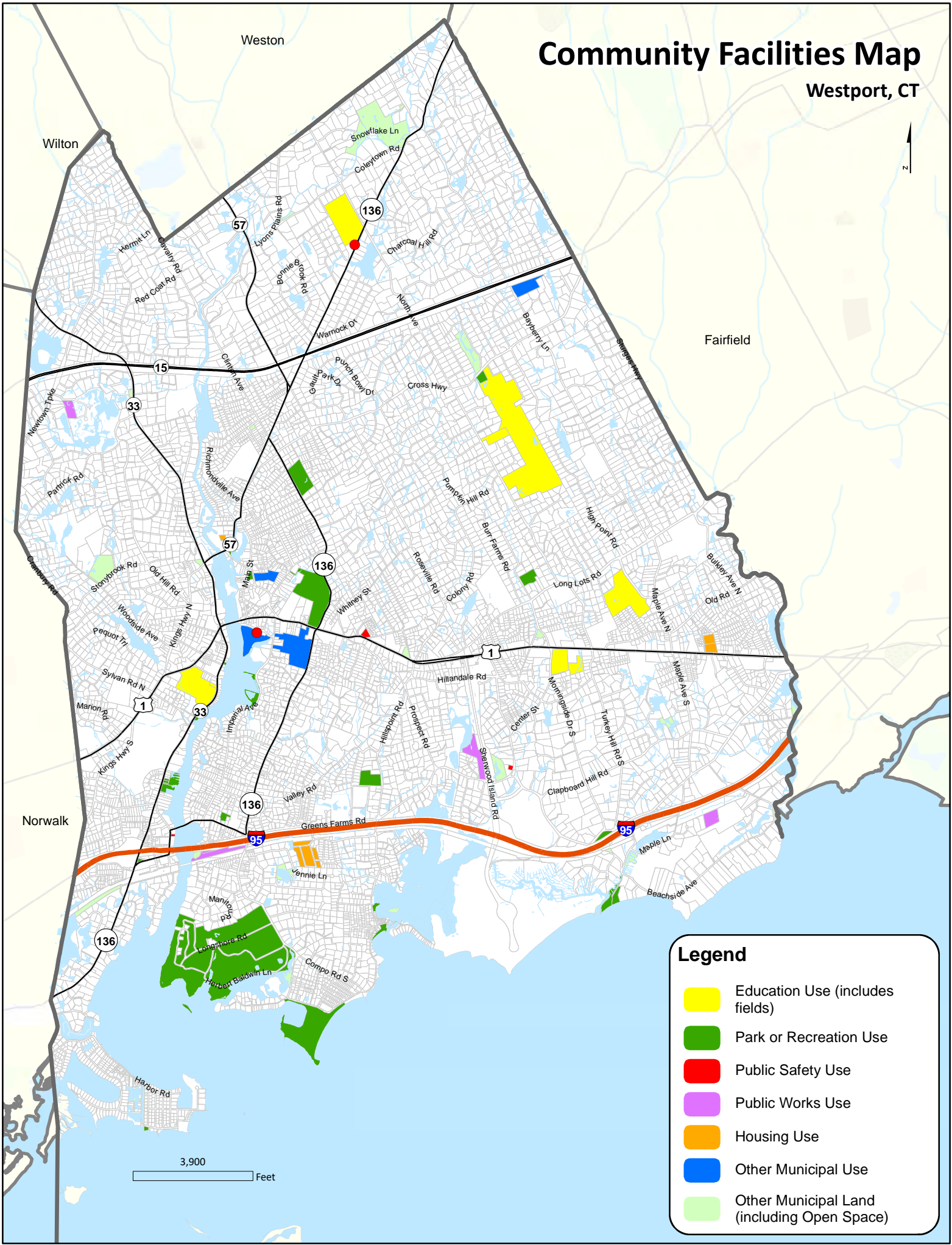
Baron's South  
Canal Green  
Grace K. Salmon Park  
Hitchcock Park  
Jesup Green  
Library Riverwalk and Garden  
Levitt Pavilion for the Performing Arts  
Longshore Club Park / Evan Harding Point  
Luciano Park  
Machamux Park  
Newman Poses Nature  
Pasacrete Park  
Riverside Park  
Sherwood Mill Pond Preserve  
St. John / Myrtle Avenue Park  
Stroffolino Park  
Veterans Green  
Wakeman Park  
Winslow Park

### OTHER FACILITIES

Westport Library  
Center For Senior Activities  
Toquet Hall (Youth Center)  
Westport / Weston Health District

# Community Facilities Map

Westport, CT





In the on-line survey, participants were asked whether they agreed or disagreed with the following statement:

***Westport does a good job of managing Town buildings and properties.***

Strongly agree	9%
Agree	56%
Not sure	16%
Disagree	12%
Strongly disagree	8%

## 14.2. Maintain Existing Facilities

Westport has a broad array of municipal facilities for addressing community needs and desires. Maintaining these facilities in “tip top” shape is both a reflection of the community’s interests and a cost-effective way to maintain these facilities over time.

Participants in the telephone survey generally felt that the Town was doing a good job managing buildings and properties. However, there are some facilities (bathhouse, baseball fields, Baron’s South, etc.) where people feel that maintenance and upkeep has been lacking. Town departments have recognized the funding challenges and staffing challenges and are striving to do the best they can with the resources available.

The POCD recommends that the Town maintain buildings and facilities in a cost effective way and in the best condition possible.

A. OVERALL MAINTENANCE		Leader	Partners
1.	Continue to maintain Town buildings and facilities in a cost effective way and in the best condition possible.	Town	PSB
2.	Evaluate energy usage of all Town facilities.	Town	PSB
3.	Consider use of fuel cells as a source of independent energy for community facilities. <i>(also see Section 11.3)</i>	Town	PSB
4.	Consider establishing one or more micro-grids to tie community facilities together with a reliable source of power. <i>(also see Section 11.3)</i>	Town	PSB
		Code legend is on inside back cover	

**Police Station**



**Main Fire Station**





## 14.3. Make Efficient Use of Existing Sites

Westport has a significant investment in the community facilities it has and it will strive to maintain and improve those facilities to meet community needs. To do that, the Town will need to make effective use of the sites it has and it may make sense to encourage or allow intensification of facilities on existing sites to meet future needs. As stated on page 42, the POCD does not recommend the conversion of open space lands to community facility use.

The POCD recommends two strategies as a way to prepare for and facilitate possible future community facility needs:

- acquire land adjacent to existing Town owned properties should it become available and allow for possible future municipal use, and
- consider possible regulation changes in the future (coverage, setbacks, height, etc.) to allow facility needs to be addressed on existing sites.

A. EXPANSION POTENTIAL		Leader	Partners
1. Investigate acquisition of land adjacent to existing Town owned properties should it become available and allow for possible future municipal use.		Town	PZC LAC PSB BOE
2. Consider possible regulation changes in the future (coverage, setbacks, height, etc.) to allow facility needs to be addressed on existing sites.		PZC	
		Code legend is on inside back cover	

Longshore



Public Works





In the on-line survey, participants were asked whether they agreed or disagreed with the following statement:

***Westport's recreation facilities are adequate.***

Strongly agree	9%
Agree	56%
Not sure	16%
Disagree	12%
Strongly disagree	8%

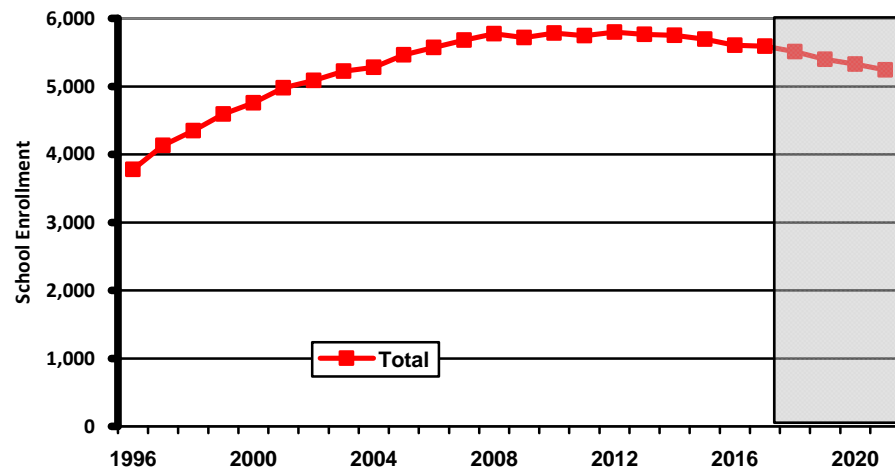
***Westport's senior services are adequate.***

Strongly agree	9%
Agree	28%
Not sure	45%
Disagree	15%
Strongly disagree	3%

## 14.4. Address Community Facility Issues

**General Government** - There is a lack of space at the Town Hall for municipal departments which affects the Town's ability to efficiently meet community needs. The Town should evaluate how to reconfigure or improve the building to best meet community needs.

**Education Facilities** – Given recent demographic and economic trends, school enrollments in Westport are expected to decrease in the short term. As a result the school system is expected to have adequate classroom capacity for anticipated enrollments through the year 2022. The Board of Education should continue to monitor enrollment projections in the event that demographic and/or economic changes signal a future increase in enrollments.



Source: NESDEC 2006, 2017

Staples High School



Coleytown Elementary School



**Recreation Facilities** – Due to participation levels in organized sports and other activities, there can be challenges accommodating all the facility requests. The Parks and Recreation Department should continue:

- using school facilities to provide space for indoor activities and seek ways to meet the demand for indoor facilities, and
- seeking ways to make the most efficient use of outdoor space including:
  - alternative surfaces (as safe and appropriate), and
  - night lighting (as appropriate).

Compo Beach and Longshore are facilities unique to Westport. Renovation of the bathhouse (and other facilities) at Compo Beach and improvements of the clubhouse and related facilities at Longshore are anticipated in the next few years. The ice rink at Longshore is a unique local resource which is much appreciated by residents.

**Indoor Recreation**



**Outdoor Recreation**



**Senior Center** - A Senior Activities Enhancement Committee is in the process of planning an expansion of the Senior Center to meet the needs of the community and accommodate the growing numbers of seniors anticipated in the future.

**Library** – The Westport Library is embarking on a major renovation to enhance the library facility and address the current and future needs of the community. Once completed, this facility should be adequate for community needs for some time.

**Senior Center**



**Library**





**Public Works** - The Public Works facility, located on the Sherwood Island Connector is challenged by a lack of space for storage of materials and equipment maintenance / storage. Strategies to resolve these space constraints should be investigated and pursued.

**Police Station** - The Police Station on Jesup Road has experienced space constraints and may not be adequate for future needs. The Town should continue to monitor the space needs at the Police Station and identify issues and potential solutions necessary to support police services.

**Emergency Medical** - The Emergency Medical Service (EMS) on Jesup Road is also experiencing space constraints and concerns have been expressed about the workload on the volunteer ambulance service. The Town should continue to assess the space needs at the EMS facility and identify issues and potential solutions necessary to support emergency medical services

**Fire Department** - Westport's fire department is primarily staffed by professional firefighters operating out of four fire stations (Post Road East, Saugatuck, Green's Farms, Coleytown). All of the fire stations are suffering from size / maintenance / design issues and a 2017 space needs assessment concluded that the stations should be improved to meet present and future needs. The Town should continue to invest in new fire equipment and technology to support fire services.

A. COMMUNITY FACILITY ISSUES		Leader	Partners
1.	Address community facility issues identified in the POCD.	Town	PSB
2.	Continue to monitor utilization of community facilities to anticipate possible future facility needs.	Town	
		Code legend is on inside back cover	

# ADDRESS INFRASTRUCTURE NEEDS

# 15

## 15.1. Overview

The availability of utility infrastructure such as piped utilities (water, sewer, natural gas, and storm drainage), wired utilities (such as electric, telephone, and cable communications) and wireless services can influence overall community development.

Westport intends to guide the provision of utility services to improve the health and welfare of the community but not allow utility availability to facilitate or encourage a land use structure, patterns, or development that would be inconsistent with the POCD.



Addressing infrastructure needs will help make Westport a more sustainable community by approaching utility needs and desires as efficiently and economically as possible.

### Goal

Address utility infrastructure needs of Westport in conformity with the land use vision for the community as reflected in the Future Land Use Plan in the POCD and in a manner that does not facilitate or encourage development that is not intended by the POCD.

Sewer Services



Water Service



### The “Blue Line”

The potential sewer service area in Westport has historically been codified in the Water Pollution Control Plan and the POCD by what has become known as the “blue line”.

The “blue line” defines the limits of sewage extensions which are anticipated in Westport.

### Sewer Need Legend



## 15.2. Manage Sewerage-Related Issues

### Current / Planned Sewer Service Area

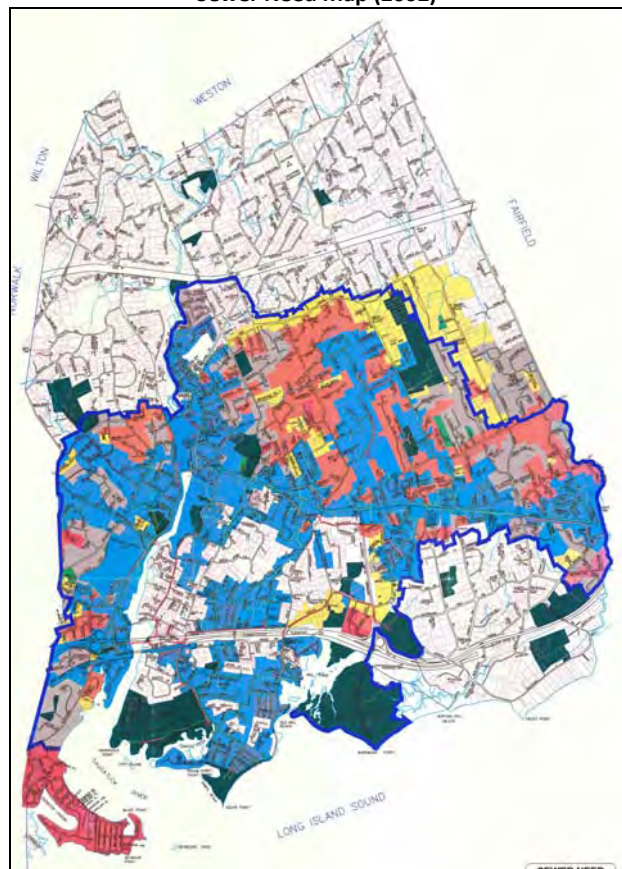
Much of Westport, except the low-density residential areas, is served by public sewer and this helps protect public health in these areas. The Town upgraded the Water Pollution Control Facility and the facility has adequate capacity for community needs during the planning period.

**However, it is a central tenet of this POCD that the availability of public sewer or the establishment of sewer capacity shall not facilitate or promote new or more intensive development beyond that envisioned for the community and as reflected in the Future Land Use Plan in the POCD.**

Additionally, the Town should only upgrade infrastructure that is reasonably necessary for the needs of the community and for which funds have been made available by the Representative Town Meeting (RTM). The Town should not accept any funding for infrastructure upgrades if such upgrades would be inconsistent with the POCD.

The adjacent map identifies “sewer need” as identified in a 2002 report by Stearns and Wheeler. A larger scale map is on file at Town Hall. It is anticipated that the sewer report / plan will be updated during the next few years and this update should be coordinated with the POCD vision for the community.

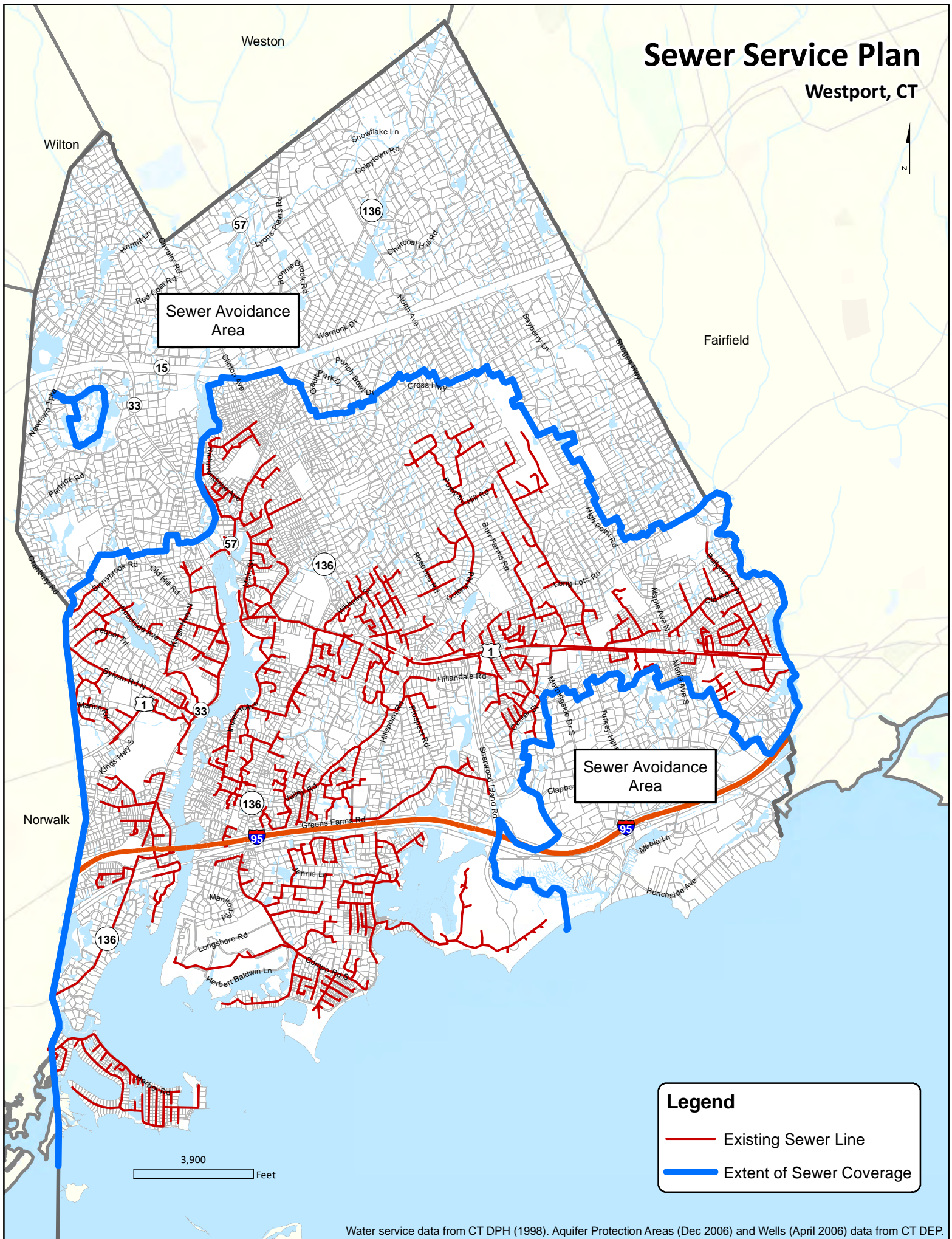
Sewer Need Map (2002)





# Sewer Service Plan

Westport, CT



## Legend

- Existing Sewer Line
- Extent of Sewer Coverage

## Sewer Avoidance

Properly functioning septic systems can be beneficial for water quantity, as they recharge aquifers and groundwater supplies rather than diverting the water to the Sound.

However, they can also be harmful to water quality, both through bacterial contamination and through the introduction of high levels of nutrients into local waterways. These inputs can be damaging to human health and the environment.

Septic system use should be employed where appropriate, with sewer systems being considered as a more appropriate alternative in some cases.

## Planned Sewer Avoidance Area

Areas outside the “blue line” are considered sewer avoidance areas. The Water Pollution Control Authority has a policy that it will not permit the extension of sewer infrastructure to serve properties outside the boundaries of the sewer service area, except when municipal sewers are the only reasonable means of mitigating water pollution problems or health or safety problems caused by the failure of subsurface disposal system(s) in the same geographic area. The POCD supports this policy.

Within the planned sewer avoidance area, the POCD supports careful maintenance of septic systems by the owners and will continue to work with the Health District and Aquarion to identify and resolve any issues. Properly functioning septic systems can be more environmentally friendly than sewer systems since septic systems recharge aquifers and groundwater supplies rather than pipe the wastewater away. Septic systems should be encouraged where appropriate.

A. SEWERAGE	Leader	Partners
1. Ensure that sewer availability or capacity does not promote development beyond that envisioned for the community and as reflected in the POCD.	PZC	WPCA WWHD
2. Maintain the “blue line” to define sewer avoidance areas.	PZC	WPCA WWHD
3. Continue to work with the Health District and Aquarion to encourage or require maintenance of septic systems by the owners and identify and resolve any issues.	PZC	WWHD AWC
Code legend is on inside back cover		

## 15.3. Maintain And Enhance Public Water Service

Aquarion Company provides public water service in many areas of Westport and this helps ensure that an adequate quality and quantity of water is available to support public health and safety and meet community needs. Westport has good regulations in place to protect water quality in the two wellfield areas in Westport (Coleytown and Canal Street).

During the planning period, the Town should continue to promote the extension of public water.

A. WATER SERVICE	Leader	Partners
1. Continue to provide a public water supply of adequate quality and quantity.	AWC	
2. Continue to promote the extension of public water for domestic supply and fire-fighting.	Town	AWC
3. Maintain regulations to protect water quality, especially in the recharge areas for public water supply wells.	PZC	
Code legend is on inside back cover		







In the on-line survey, participants were asked whether they agreed or disagreed with the following statement:

***The storm drainage system in Westport is adequate.***

Strongly agree	3%
Agree	35%
Not sure	32%
Disagree	23%
Strongly disagree	7%

***Westport is doing a good job managing stormwater runoff and flooding.***

Strongly agree	3%
Agree	34%
Not sure	30%
Disagree	25%
Strongly disagree	8%

## 15.4. Address Storm Drainage Issues

Storm drainage continues to be an issue in Westport. In the on-line survey, roughly one-third of participants felt there were drainage issues that needed to be addressed in the community.

Many of the storm drainage systems in Westport were constructed in the 1950s and 1960s and were designed based on the size of houses being built at that time and the frequency of certain storm events. Over the past 60 years, smaller houses have been replaced with larger houses and the frequency of larger storm events has increased.

The Town has been addressing this issue by:

- replacing undersized pipes as part of improvement projects,
- requiring new development (and redevelopment) to demonstrate a “zero net increase” in the rate of runoff, and
- implementing “low impact development” (LID) approaches to drainage that attempt to address drainage issues closer to where the raindrop falls (see Chapter 7 – Protect Natural Resources).

The new statewide Municipal Separate Storm Sewer Systems (MS4) permit requires Westport to become much more active in addressing stormwater runoff, including preparing a stormwater management plan. Town agencies should continue to find ways to address the storm drainage issues which are identified. When managed properly, storm water is a valuable resource. However, when storm water is managed like a waste product, it can exacerbate flooding and becomes contaminated with pollutants. Westport should both mitigate storm water impacts to our rivers, and understand how we can better utilize storm water as a resource, rather than a waste product.

A. STORM DRAINAGE	Leader	Partners
1. Continue to undertake drainage improvement projects where warranted.	PW	CT-DOT
2. Continue to implement “low impact development” (LID) approaches to drainage.	PZC	PW
3. Investigate ways to minimize the impact of drainage on properties adjacent to redeveloped sites.	PZC	PW
Code legend is on inside back cover		

## 15.5. Manage Wired Utilities

Westport has adequate wired utility systems (electricity, telephone, cable, internet) in place to meet community needs.

The major policy initiative in the future is likely to be the desire for an increase in internet speed / capacity. Some communities in Connecticut are banding together to implement higher internet speeds in their communities (CT Gig Project) and Westport should seek to be at the forefront of this effort.

In addition, it is anticipated that the electrical grid will need upgrading in the future to address issues such as distributed generation and other evolutionary improvements in the electricity network.

A. WIRED UTILITIES		Leader	Partners
1.	Work with utility providers to maintain adequate and reliable wired utility systems in Westport.	Town	
2.	Work with utility companies to protect tree canopies from unreasonable destruction from utility pruning.	TW	
3.	For any plantings near overhead utility lines, encourage the planting of appropriate trees and shrubs.	Town	
4.	Seek to be at the forefront of the statewide effort to increase internet speed / capacity.	Town	
		Code legend is on inside back cover	

### Tree Trimming

So that wired utility services are reliable, Westport should continue to work with utility companies who seek to improve the reliability of their systems by undertaking tree trimming projects.

There is a delicate balance between community character (which can be adversely affected by aggressive tree trimming) and utility availability and reliability (which can be enhanced by tree trimming).

However, protecting wired utility services can be a critical resilience measure since falling trees and branches during extreme weather events can disrupt the power grid for extended periods of time.

Wired Utilities





In the on-line survey, participants were asked whether they agreed or disagreed with the following statement:

***Westport should encourage improvements in internet speed and cell phone service.***

Strongly agree	32%
Agree	30%
Not sure	22%
Disagree	12%
Strongly disagree	4%

## 15.6. Enhance Wireless Capabilities

With the advent of “smart phones,” people have become even more reliant on wireless services for managing day-to-day aspects of their lives. Some people are even abandoning “land-line” phones and exclusively using cellular phones for communications. This evolution of communications is dependent on the availability of service and system capacity.

The POCD recommends that Westport seek to improve the availability and capacity of wireless services in ways that are appropriate and compatible with community character (such as using “stealth” technologies and similar approaches).

A. WIRELESS CAPABILITIES		Leader	Partners
1.	Seek to improve the availability and capacity of wireless services in ways that are compatible with community character.	Town	
<input type="checkbox"/>	a. Consider adopting “telecommunication facility siting principles” to provide guidance with regard to compatibility with community character.	Town	PZC
		Code legend is on inside back cover	

Wireless Communications



Wireless Communications

