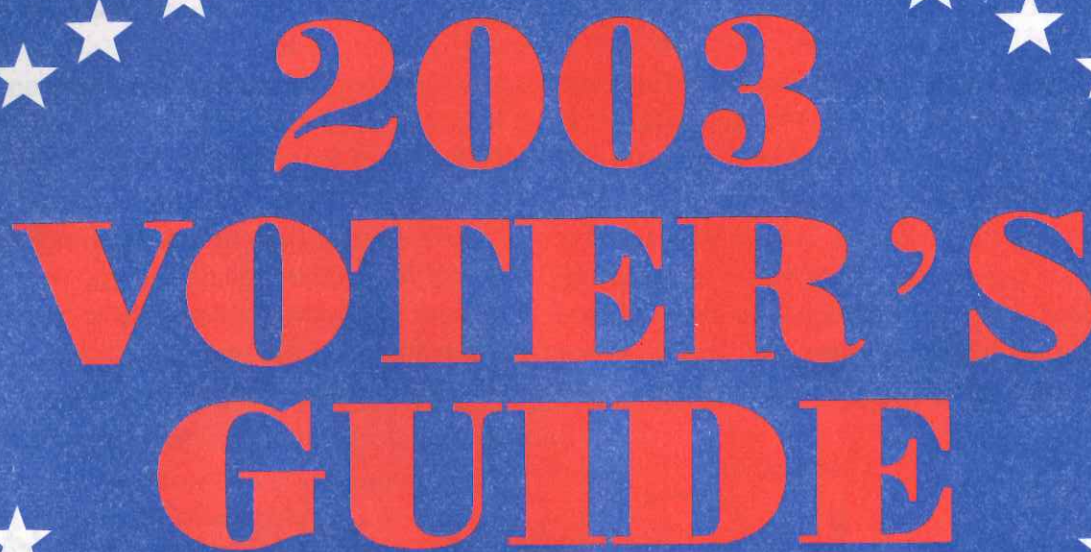




**LEAGUE OF WOMEN VOTERS OF WESTPORT**



**2003  
VOTER'S  
GUIDE**

**VOTE TUESDAY, NOVEMBER 4<sup>TH</sup>**

**POLLS OPEN 6 am to 8 pm**



## A MESSAGE FROM THE LEAGUE OF WOMEN VOTERS OF WESTPORT

Dear Westport Voter:

The *Voter's Guide*, published each fall by the League of Women Voters of Westport, is mailed to every residence in Westport to inform voters about the process of voting. It is also our **non-partisan** attempt to inform voters about the candidates for public office. We hope that it helps and encourages you in several ways to exercise your right and responsibility to vote.

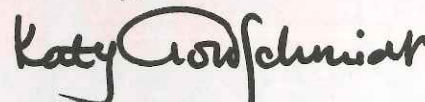
Westporters rightfully pride themselves on their civic involvement and political awareness. The traditionally low turn-out for local elections is, therefore, surprising. Would you believe that voter turn-out in 1999 — a comparable year — was a deplorable 35.9%? Surely we can do better than that.

We want to draw your attention to a major change in the voting districts for the **Representative Town Meeting**. There are now **nine** districts, and as a result, **your voting district and your polling place may have changed**. Please read pages 12 and 13 very carefully to verify your district. Save the postcard you receive from the Registrar of Voters identifying your district and polling place for reference on Election Day.

For first-time voters and newcomers to Westport, page 3 provides important information on **WHERE AND HOW TO VOTE**. Practical advice on the **MECHANICS OF VOTING** can be found on pages 24 and 25. If you're still stumped, you can call the Registrar of Voters at 341-1115 or the League of Women Voters at 226-6170.

By providing the responses to questions asked of the candidates for each office, the *Guide* allows you to compare and contrast their views on issues important to Westporters today. But **you** may have other questions. If so, get in touch with the candidates. Consider involving your middle or high school children in the search for answers. You will be educating yourself and at the same time teaching future voters that participation in this part of the democratic process is very important work.

Sincerely,



Katy Goldschmidt  
Co-President, LWV Westport



Hope Hageman  
Co-President, LWV Westport

---

## THE LEAGUE OF WOMEN VOTERS EDUCATION FUND

This *Voter's Guide* has been published in part by contributions to the LWV Education Fund. The monies from this fund are used for citizen education projects. The *Guide* and other publications and activities of the League are intended to help voters utilize government services knowledgeably and to participate actively in the democratic process. You can show your support for this goal by making a tax-deductible contribution to the Education Fund.

Checks may be made to **The LWVUS Education Fund** and sent to:  
**League of Women Voters of Westport, P.O. Box 285, Westport, CT 06881**

---

## WHERE & HOW TO VOTE

*Officials will be on hand at all polling places to answer your questions and demonstrate the voting machine.*

### WHERE TO VOTE

Please refer to pages 12 & 13 of this *Voter's Guide* for information about which District you live in and where to vote. **PLEASE NOTE THAT VOTING DISTRICTS HAVE CHANGED; YOU MAY BE IN A DIFFERENT DISTRICT FROM PRIOR YEARS.**

### REMEMBER TO BRING IDENTIFICATION TO THE POLLS

Voters must show a pre-printed ID before voting. Acceptable forms of ID include a driver's license, a Social Security card, a library card or else must sign a statement attesting to his/her identity.

### VOTING IN PERSON

Please bring proper identification and give your address and name to the identity checkers. They will direct you to a voting machine. **You may take this guide with you into the polling place.**

### VOTING WITH CHILDREN

State law allows a child up to age 16 to accompany a voter, who must be his or her parent or guardian, into a voting booth.

### VOTING BY ABSENTEE BALLOT

Applications for an Absentee Ballot are available in the Town Clerk's office in person or by mail. The Absentee Ballot application can also be downloaded from the Town of Westport website.

You may vote by absentee ballot only if you are:

1. Out of town during all voting hours (6am to 8 pm)
2. Ill or physically disabled.
3. Prohibited by your religion from voting that day.
4. In the Armed Forces.
5. An election official working at another polling place.

Completed ballots must be received by the Town Clerk by 8pm on Election Day, so **ACT NOW** to vote absentee **BY MAIL**. You may vote absentee **IN PERSON** in the town Clerk's office at Town Hall any weekday between 8:30am and 4:30pm before November 4. Also, the office will be open Saturday, November 1 from 9am to Noon.

### IF YOU ARE 18 YEARS OLD OR A NEW RESIDENT

The cut-off date for registering to vote was October 21. **BUT**, if you have moved into town since that date, or become a new citizen or will turn 18 on or before November 4, you may still register to vote in this election. Contact the Registrar of Voters at 341-1115.



**STEP BY STEP INSTRUCTIONS ON HOW TO OPERATE THE VOTING MACHINE ARE ON PAGE 24 OF THIS VOTER'S GUIDE.**

---

## CANDIDATES FOR BOARD OF FINANCE

Term of Office: 4 years

**LWV Question:** Explain how you would prioritize important town financial issues such as cooperative purchasing, open space acquisition, tax relief and other issues.

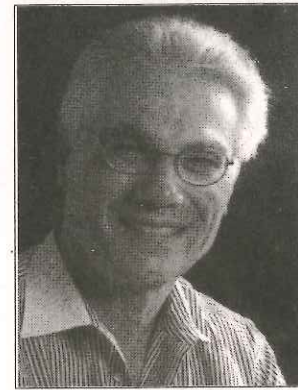


**R. Gavin S. Anderson (Republican)**

**Answer:** Property Taxes (the Mill Rate), Town Operating Cost Budgets, total Debt and Debt service costs and the Town's Bond Rating are the high priority financial issues in Westport. Cooperative purchasing has been an issue for years and, though it does offer savings opportunities, it may not yield the \$ millions suggested. Excluding Debt Service, 80% of Town costs are wages and employee benefits. Cooperative purchasing savings could really apply to only about 20% of the Budget.

Tax Relief is a real priority as taxes continue to absorb a larger percentage of income of those on fixed incomes. The fact that tax relief is so necessary is tacit acceptance by government that taxes *must* increase because costs cannot be kept down. The *real* issue is controlling costs.

Open space acquisition should always be a priority. The Town appropriately maintains a small reserve to contribute to purchases should the appropriate opportunity arise.



**Thomas C. Bloch (Republican)**

**Answer:** The single most important financial issue facing Westport is the Town's ability to control accelerating operating costs and concurrently deliver first rate community services. To control costs without cutting services the town must be focused on how every dollar is spent. Waste and ineffective use of resources should be identified and corrected.

Tax relief sounds good and plays well. Over the last few years a huge sum of money has been spent on needed projects. This caused the Town's debt to rise and will soon reach \$150MM. Therefore tax relief can only be achieved by eliminating waste and having the Town become more productive with the use of its assets.

Centralized purchasing is a proven discipline. If the purchasing unit is structured correctly significant savings can be achieved. Purchases of open space should only be made for opportunistic reasons.

**Background:** Recently retired financial executive who believes in service to the community.



**Ralph Hymans (Republican)**

**Answer:**

**"WESTPORT TAXES AND DEBT ARE THE HIGHEST IN HISTORY."**

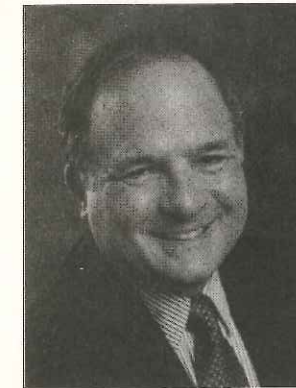
"We need to change — to prudently review our spending and use our tax dollars cost-effectively."

**Background:** Member RTM, 9 years, on Finance, Parks and Recreation, Public Protection Committees, CPA. Educated at Harvard College, Harvard Business School, 26 year resident.

Vote for any four

## CANDIDATES FOR BOARD OF FINANCE

The Board of Finance has seven members serving staggered four-year terms. They review and endorse all appropriations, including the annual budget, set the tax rate, and prepare and issue the annual Town report.



**Charles W. K. Haberstroh (Republican)**

**Answer:** I would listen closely to constituents, work closely with other Boards and Commissions, exercise fiscal responsibility to ensure maximum cost effectiveness, and improve those attributes that have made Westport the great community that it is today. We must ensure that Westport education continues to set the standards for national excellence, while keeping a vigilant eye over all associated costs. I will work to upgrade the town's recreational facilities, reduce traffic congestion, especially downtown, and promote senior services.

**Background:** RTM member 2001-present; Finance, Transit and Parks & Rec. Committees. Harvard University graduate. Established own Westport-based financial services company after 26 years NYC banking. 13 year resident, married, father of four. President, Staples Boys Basketball Association, 1996-present. Staples Baccalaureate Parent Speaker, 2000. Board member, Westport Sunrise Rotary, Chair-Youth Activities Committee Member, Westport Chamber of Commerce. Coach, various Parks and Recreation and travel basketball and youth baseball teams



**Steven L. Ezzes (Democrat)**

**Answer:** The economy has changed since the last election. However, Westport is in excellent fiscal condition. Financial reserves are strong and our AAA rating intact. As Chairman of the BOF for six years, I have overseen the acquisition of open space: Baron's South, the Newman and Yeager properties. The BOF instituted innovative tax relief policies for our seniors and approved a new Senior Center. We renovated our schools and a middle school was constructed. All of these accomplishments were made with careful deliberation and little rancor. We now need to be assured the economic purchasing power of the Town and Board of Education are brought together. Westport has a \$129 million budget. The budgets of the Town and the BOE are separate, but our tax dollars are one. I want to continue to provide quality education and services while assuring our citizens this is accomplished with the greatest of cost efficiencies.



**Kevin A. Connolly (Democrat)**

**Answer:** The most important town financial issue continues to be the cost efficient completion of the last leg of our school build out program, Staples High School. I support and encourage cooperative purchasing policies within The Town and Education operating budgets. Open space acquisitions will continue to be assessed on their merits and pursued on a case by case basis. I will continue to support the current tax relief program for seniors, one of the most progressive in the country. New initiatives and ongoing budgetary management will be viewed towards preserving Westport's Triple A bond rating. I will continue to work in a cooperative spirit with other town bodies to address the needs of Westport citizens in the most prudent and cost effective manner.

**Background:** Current Board Member. Yale BA. 14 year resident. SVP Bank of New York. With wife Diane, two children in Westport schools.

## CANDIDATES FOR BOARD OF EDUCATION

Term of Office: 4 years

The Board of Education has seven members serving staggered four-year terms. It functions primarily as a policy-making and planning agency of the town's educational system, consulting with and relying on the school staff for the administration and implementation of plans.

### LWV Question:

How should the Board of Education interact with diverse segments of the community including parents and other residents, faculty, students, elected officials and the Superintendent?

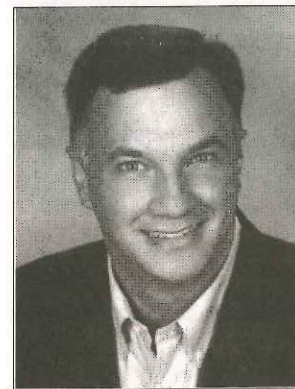


#### Edward M. Bowers (Republican)

**Answer:** Over the last two years I have attended many board meetings and have become saddened at the tension that has arisen between the current Board of Education, the public, and Westport's boards and commissions.

As a former elected official, my wealth of experience in working with the public has taught me, the most important trait an elected official must have is being able to listen to the public before reaching any decision. It is impossible to please everyone, but as an elected official you must be open to all points of view before reaching a decision.

In the coming year, I see greater demand being placed on the school system. My goal on the Board will be to make sure shifting priorities do not jeopardize the excellent educational system that has been achieved over the years.



#### Lewis D. Brey (Republican)

**Answer:** The Board of Education is elected by the community and therefore should respond to the needs and concerns of all Westporters. Open debate and constructive public input result in better decisions that are built on the broadest possible consensus. With years of public service in Westport, I understand the importance of working closely and openly with other boards, commissions, community leaders, members of the public, and staff. Westport is a vibrant community and listening to a wide range of input and opinions is essential to effective public service. **Background:** RTM-Education Committee, Chairman-Employee Compensation Committee; School Building Committee; Board of Finance; RTM and Board of Finance representative to labor negotiations; Westport/Weston YMCA Board of Directors; Partner, Spitzer & Brey, L.L.C., labor/employment law; Emory University, B.A., Pace University School of Law, J.D.; lifelong Westporter, graduate of Staples; wife Jean, English teacher, Wilton High School, two children-Daniel and William.



#### Mark H. Mathias (Democrat)

**Answer:** The Board of Education must be responsive to all segments of the community. People interacting with the Board must know they are heard and their input considered.

Diverse segments of the community require diverse methods of interaction with the Board. Information about what the Board is doing needs to be accessible to the community. This could include easier access to Board documents and meetings through mailings, email, or the Internet. Similarly, the community needs to be able to deliver their messages to the Board.

Increased transparency on the part of the Board will allow the community to understand the work being done to improve our school system for our children. By opening up the Board's business to the community, we will increase the community's awareness of how and why the Board makes its decisions. **Background:** Mark Mathias is a business and technology leader. His daughter attends Saugatuck Elementary School.

Vote for any three

## CANDIDATES FOR BOARD OF EDUCATION



#### Mary R. Parmelee (Democrat)

**Answer:** All communications to the Board should be heard respectfully and responsively. Questions posed should be answered and information sought should be provided as quickly as practicable. Information received from parents, students and other segments of our community can provide the Board of Education with valuable insights. Communication from the Board must become more effective in terms of content and audience. To encourage attendance, meetings could be held at various locations ranging from schools to Town Hall. Meetings could be televised. Our schools belong to our community. If this statement is accepted as a given, our community will continue to support the richness of curriculum and depth of educational programs Westport has long enjoyed. **Background:** Business experience: tax attorney for domestic/international mergers and acquisitions; design of financial instruments. Community experience: includes 4 years Board of Education; 5 years School Building Committee; 4 years PTA President; 6 years Girl Scouts.



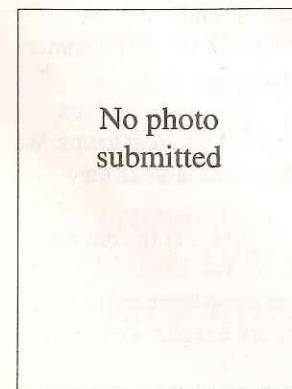
#### Stephen M. Rubin (Petitioning Candidate)

**Answer:** We must have open meetings where the public is welcomed, heard and respected. Information must be shared between all citizens including students, parents, faculty and the superintendent. Interaction is vital for proper understanding of issues. We should expand live television programming recently adopted by the RTM to interact and take advantage of computer technology including email to distribute information. By moving the meetings from the schools to Town Hall, live television is accomplished without any additional costs. During ten years on the RTM I have found committee meetings very valuable. More interactive regularly scheduled joint meetings with town boards, committees and officials during the year would allow improved understanding of issues. As an RTM member, where Robert's Rules are observed I have worked on the RTM Education Committee therefore attending the majority of BOE meetings and feel more parliamentary procedure would help the BOE to interact more effectively.



#### Robert Hale Andrew (Petitioning Candidate)

**Answer:** Interaction with the community should be marked by open and honest communication. Each segment has an important perspective that the Board must consider carefully in its decision-making, and each should be kept fully informed of the Board's deliberations. Parents are an essential part of the process; the Board should seek out and value their input, especially as it pertains to life outside school. Residents without children help support our schools, and their opinions should never be discounted. Board members should take particular care to solicit the views of faculty and students, unfiltered by school administrators. They should work collaboratively with other elected officials in pursuit of affordable educational excellence. The Board must give the superintendent clear direction on priorities and use his professional advice wisely. As an independent candidate, with years of experience as both a financial professional and an educator, I believe I can help achieve these goals.



No photo submitted

#### Robert M. Chasin (Petitioning Candidate)

**Answer:** I am the proud parent of a second grader at King's Highway School and have lived in Westport for the past 10 years. Good communication and dissemination of information is essential to public support. The School Board must implement innovative approaches to reach out to parents and residents, such as internet-based community forums and district advisory councils. School Board Workshops would formalize direct interaction between the Board, Superintendent and faculty on a specific concern or area of district operations, facilitating informed decision making by the Board at a later meeting. The appointment of a student advisory member to the Board of Education is crucial to acknowledge the student voice in each of its policymaking decisions. It is important that the Board demonstrates to elected officials responsible spending and solicits their input throughout the school budget process.

## CANDIDATES FOR PLANNING & ZONING COMMISSION

Term of Office: 4 years

### LWV Question:

Outline your philosophy of land use and how it applies to the challenges facing Westport.



**Sean M. Timmins (Republican)**

**Answer:** Progress typically refers to positive changes to a system or society, but when allowed to occur without disciplined analysis and evaluation, it frequently results in a diminished quality of life. Well thought out and responsible development can be enormously beneficial to communities, Westport is no exception. The actions we must take with regard to development cannot be compromised. We must preserve open space, reduce traffic congestion, avoid urbanization and sprawl, and preserve the nature of our historic town.

Working with our neighboring communities and promoting cooperation from a regional perspective we can reduce the risks of over-development. This will allow us to embrace positive ideas while avoiding irreversible mistakes.

We must deliberately evaluate all proposals to ensure the community's interests are served and to preserve the character of our town.

My family came here to enjoy the beauty of Westport. I'd like to help keep it as I found it.



**Helen Martin Block (Republican)**

**Answer:** There are more needs than land to satisfy various constituencies. Preserving open space that maintains our beautiful New England setting and defends against environmental degradation is critical. Protecting historic neighborhoods, fragile lands and building features preserve our character. An improved YMCA and affordable housing are issues. Maintaining economic vitality through careful use of commercial space enhances the private sector and sustains the Town's image. My philosophy is formed by respect for the rights and insights the citizens of Westport have to preserve their cherished legacy. True needs coupled with wise management of resources are yardsticks by which decisions must be made. Understanding to act with a conscience but be supported by statutes and laws that govern is a responsibility that requires study, good counsel and commitment.

**Background:** As an educator, former realtor, wife and mother my interests have gravitated toward preserving the environment and supporting programs that enhance quality of life.



**James R. Cochrane (Republican)**

**Answer:** To effectively manage land use we need a more regional approach. As author Myron Orfield stated at the recent Connecticut Economic Summit, "Either work together to solve common problems or have even harsher consequences."

Westport's major planning issues are traffic congestion, sprawl and the loss of its character. New developments in one location can adversely affect those elsewhere including neighboring towns. We must work from within Westport and then out to our neighbors to solve these problems, as they affect us all.

Five generations of my family have lived here. The over-development of this town, both commercial and residential, has reached unacceptable proportions.

It's time for a new commission with new leadership and new goals. We must stop business as usual for those who have no concern for the impact and harm they cause. Let's work towards a common goal of not only local, but regional governance and informed planning.

Vote for any four

## CANDIDATES FOR PLANNING & ZONING COMMISSION

The Planning and Zoning Commission has seven members serving staggered four-year terms. They are responsible for developing a Town Plan, securing the most desirable use of land within the town, regulating the density of population, and drafting zoning regulations necessary to the success of the plan.



**David B. Press (Republican)**

**Answer:** Whether individual homes replacing "tear downs" or multi-house subdivisions, the key land use challenge is maintaining the low-density residential nature of Westport that attracted all of us. The addition of schools and public facilities, and improvements made to retail space has placed added strain on land use management.

Planning alone cannot command the "tides" of backhoes and hammers to halt. Effective Commission decision-making on applications will help maintain the New England character of the town. Preservation of the character of the town relies on more than an algorithm of height, coverage, curb cuts, and setbacks. This oversight can be done, both in the residential zones and in the retail and commercial zones.

**Background:** 18 year resident of Westport. Married with 3 children who attended Westport schools. BA: Syracuse University; MBA: Columbia University. Former securities analyst and municipal bond portfolio manager. History researcher and writer.



**Eleanor S. Lowenstein (Democrat/Save Westport Now)**

**Answer:** I believe in maintaining the careful, thoughtful planning and zoning that have established Westport as a viable, beautiful residential town. Planning and zoning changes should be for the good of the whole community. Changes must be balanced against overburdening land, increasing traffic and the need for additional public facilities. Some challenges facing Westport are: providing opportunities for more affordable homes; protecting environmentally sensitive land and historic sites; retaining public land for municipal needs and open space; addressing traffic congestion; and enhancing rather than expanding commercial areas to meet residents' needs. The P&Z must meet these challenges within the framework of Westport's Town Plan of Conservation and Development, Downtown Plan, zoning regulations and the state statutes.

**Background:** Chairman P&Z since 12/96; former president League of Women Voters; founding member LWV Land Management Committee; led P&Z during 1997 Town Plan development; past president Long Lots PTA; Staples PTA board.

### For your information...

- All candidates were required to meet criteria such as limited word count.
- RTM candidates were prohibited from referring to any political party.
- Submissions were printed as they were received without corrections to grammatical, typographical or spelling errors.
- The LWV is not responsible for the accuracy of the background information provided by the candidate.

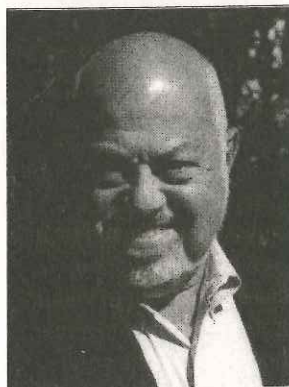
## CANDIDATES FOR BOARD OF ASSESSMENT APPEALS

Term of Office: 4 years  
Vote for only one

The Board of Assessment Appeals has three members with staggered four-year terms who review appeals for revisions of tax assessments.

### LWV Question:

What should taxpayers know about their rights and responsibilities under the assessment appeals process?



#### Garson F. Heller Jr. (Republican)

**Answer:** State law requires that towns assess all properties at 70% of full value and update assessments every four years. If after determining your market value as of 10/1/2003 (new reassessment date), you feel your property is over-assessed, first request a reduction by the reassessment firm or the Assessor. If still not satisfied, you can appeal to the Board of Assessment Appeals (BAA) during their March hearings — legal notice published in newspaper. At the BAA you should document the difference between assessed value and your valuation. Showing comparable properties and sales is the best way to defend your position. If you still feel over-assessed, you can appeal to the State Court. You can re-appeal to both the Assessor and the BAA every year.

**Background:** Retired after 45 years as computer executive, Yale 1957, 39 year Westport resident, served 14 years on the RTM and 21 years on the BAA, 18 as chairman.

**This Voter's Guide is proudly  
brought to you by  
The League of Women Voters of Westport**

LWV of Westport  
P.O. Box 285  
Westport, CT 06881-0285  
(203) 226-6170

*Professional credit: Typesetting was done by LWV member Pamela Weil.*

## CANDIDATES FOR ZONING BOARD OF APPEALS

Term of Office: 4 years  
Vote for any three

The ZBA has five members serving staggered four-year terms. They review appeals for variances from the Planning & Zoning regulations. A variance requires proof of a hardship to the property itself, not the building.

### LWV Question:

What should the considerations be when a request for a variance comes before the ZBA?



#### Elizabeth Wong (Republican)

**Answer:** Documented legitimate hardship based on property's unique characteristics, use or circumstance; thorough impartial analysis, thoughtful consideration and sensitivity to neighbor's concerns in context and balanced with applicant's right to improve his/her property; harmony with Town Plan and neighborhood with future perspective of an evolving community and long term consequences of granted variance(s); assurance that variance(s) will not adversely impact contiguous properties, neighborhood(s), the safety, health or welfare of Westport residents.

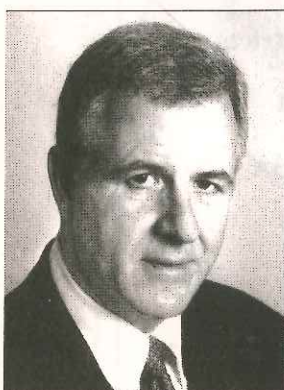
**Background:** Six year ZBA member, Vice-Chairman since 1999. Neighborhood preservation and housing policy—NYS Division of Housing and Community Renewal, other municipal agencies. MS Urban Planning, Columbia University; BA Urban Studies, Briarcliff College, Briarcliff Manor, N.Y. American Planning Association. Former PTA Executive Board member and active volunteer, Kings Highway and Bedford Schools; League of Women Voters. Westport resident 22 years; husband, James Wong, M.D.; daughter, Alicia.



#### Duane Nelson (Republican)

**Answer:** When the literal application of the zoning regulations may cause undue hardship on a particular piece of property, the general purpose and intent of the zoning regulations to protect the public health, safety and welfare should be a guiding principle in considering a variance. Another consideration would be the conditions that specially affect the parcel but do not affect generally the district in which it is situated. Other considerations would include the size of the parcel, the development of the neighboring parcels, the surrounding uses, the intensity of the use, traffic, parking and property values. The decision depends on a balancing of various interests to accomplish an equitable result.

**Background:** Planning and Zoning Commission 2001-present; Alternate 1998-2001; P & Z Regulations Committee. General Counsel and First Vice President, Citigroup Investments Real Estate. Yale University, B.A. Economics. Georgetown University Law Center, J.D.



#### James C. Ezzes (Democrat)

**Answer:** There is only one consideration when an application comes before the ZBA: Is there a hardship as defined by Connecticut General State Statutes, in conjunction with the zoning regulations for the Town of Westport. A hardship is generally something considered unique about a particular property. Variances are granted sparingly, in perpetuity and decisions are made after careful deliberation. As a community we are fortunate that our zoning regulations were developed thoroughly and are reviewed regularly in conjunction with The Westport Plan of Conservation and Development. As Chairman for the past six years, I have worked to make public hearings a fair and impartial process. As the "safety valve" for applicants it is important that people feel that they have been treated in a knowledgeable, courteous and educated manner. The needs of our community continually change and how we manage the change is ultimately a significant challenge for the ZBA.

## THE IMPACT OF REDISTRICTING

Dear Westport Voter:

Preparation for the November 4th election began last December 2002; one month after the gubernatorial election became history. What makes this election so special? Well, last December the Representative Town Meeting Rules Committee members began the tedious task of redistricting the boundary lines of local representation. Changes to the boundary lines were required to conform to U. S. Census Data which outlined Westport's geographical shifts in population over the past ten years and our local Charter which states deviation between districts cannot be more than ten percent between the smallest district and the largest district.

In April, the RTM approved our new boundary lines. These changes become effective with this election. The RTM will remain at 36 members, divided evenly between nine districts. Each district will have four representatives.

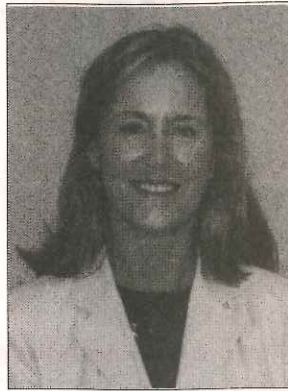
With redistricting in place, our Westport voters have the responsibility of locating their new district and their new polling place. The map and legend found in this guide will assist you. Prior to the election, the Registrars of Voters, Judy Raines and Nita Cohen, will be mailing postcards to each household announcing their voting location. If you are having difficulty knowing where to vote, call the Registrars of Voters Office at 341-1115 for assistance.

I offer many thanks to the League of Women Voters for the annual publication of the Voter's Guide and for their continued commitment to educate the voter to the democratic voting process and their right to vote.

Sincerely,

*Patricia H. Strauss*

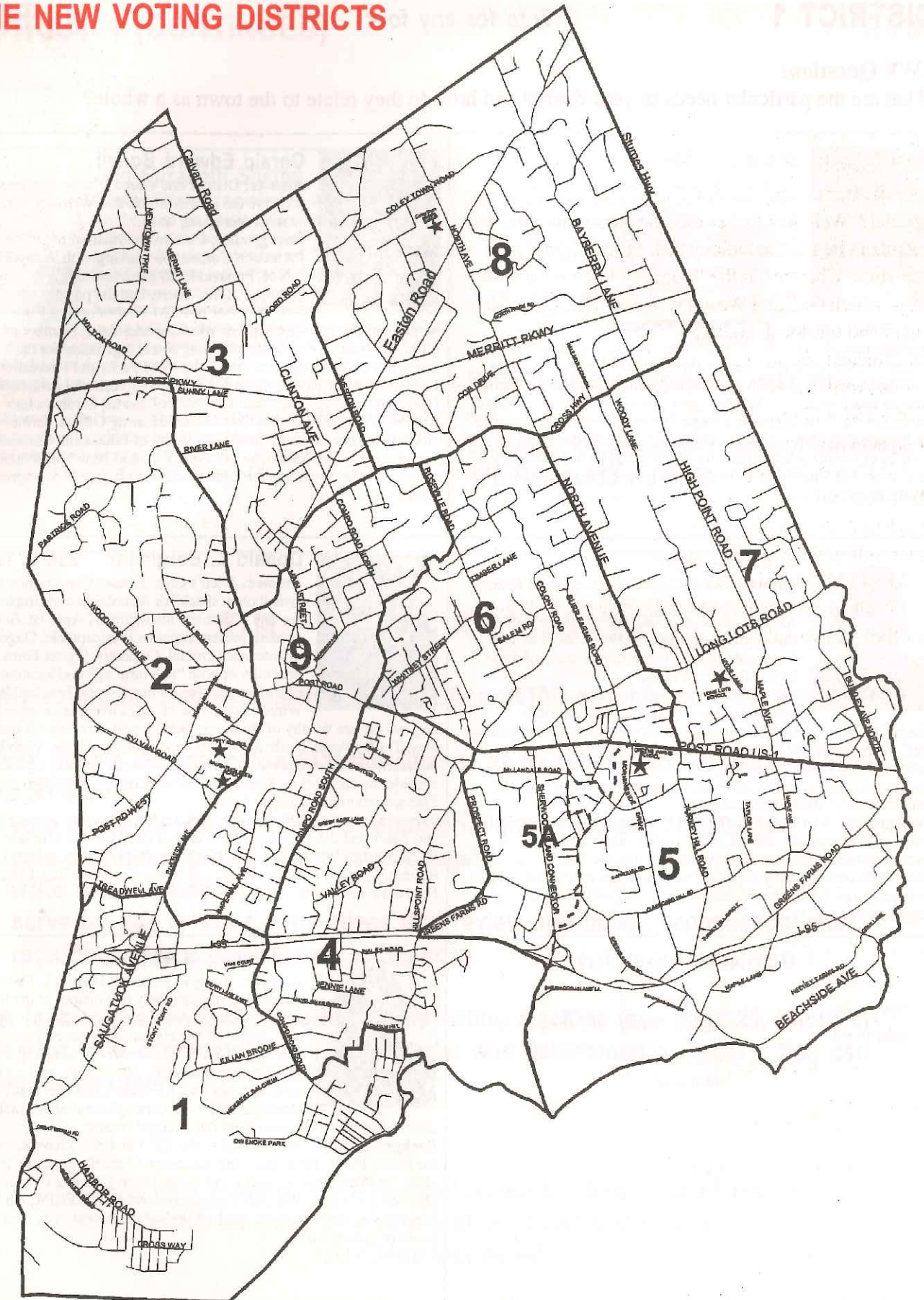
Patricia H. Strauss  
Town Clerk



### WHERE TO VOTE TOWN OF WESTPORT ELECTION VOTING DISTRICTS

Polling Places	Voting Districts
★ Saugatuck Elementary School, 170 Riverside Avenue	1 & 9
★ Greens Farms School, 17 Morningside Drive South	4, 5 & 5A
★ Coleytown Middle School, 255 North Avenue	3 & 8
★ Long Lots School, 13 Hyde Lane	6 & 7
★ Kings Highway School, 125 Post Road West	2

## THE NEW VOTING DISTRICTS



**LWV Question:**

What are the particular needs of your district and how do they relate to the town as a whole?



**Diane D. Cady**

**Answer:** Preservation and protection of Long Island Sound, beaches and marshes. Maintain our schools' high standards of excellence and balance town services with the ability of Westporters to pay for them. Through adequate tax relief for senior citizens, maintain a diversity of generations in town. With an open mind and careful study, examination of the long-term consequences of

expenditures and ordinances.

**Background:** 40-year Westport resident. Former President, Westport Young Woman's League. Unsung Hero award from Red Cross for community services at 9-11. Obtained grants and planted 42 sizable trees in beach area. Co-Chair Westport's new Tree Board. Led initial campaign for flood control in Compo Beach, overcoming resistance of 3 municipal administrations. Through diligent research, found sources of financial assistance for elevating houses over flood levels in Compo and Saugatuck. Raised 3 children who went through Westport schools.



**Gerald Edward Bodell**

**Answer:** District one's need is to work diligently to preserve the quality of life that Westport offers without increasing taxes.

**Background:** Current chairman of the RTM Public Protection Committee working with Westport's Police, Fire and EMS departments for the safeguarding of life, liberty and the pursuit of happiness; member of RTM Environmental Committee

working to preserve open spaces, clean air and water; member of the RTM Ordinance Committee providing sound legislation for the governing of Westport; member of the RTM Parks and Recreation Committee working to conserve Westport's recreational landscape. Holy Cross College, Fordham Law School; Editor Fordham Law Review, CT Human Rights Commission Hearing Officer, former elected member of the Mamaroneck Board of Education, Counsel for Jewish Child Care Association of New York and New York Foundling Hospital; First Amendment Rights practitioner before U.S. Supreme Court.



**Judith K. Starr**

**Answer:** Our district is a microcosm of Westport. It includes some of the wealthiest and most modest neighborhoods. It also contains, in downtown Saugatuck, a central business area. The issues in our district mirror many of those before the whole town.

We all face these upcoming challenges: (1) managing development and traffic while maintaining our vibrancy and tax base, without cracking the "golden egg" of character and appeal; (2) preserving economic diversity among residents of all age groups, including those struggling with increasing taxes; and, (3) balancing home owners' rights with the preservation of Westport's character.

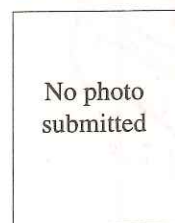
**Background:** As a Saugatuck Shores (District 1) resident for 25 years, a professionally trained social worker, and a former RTM representative serving on the Environment and the Transit Committees, I will contribute my experience, knowledge, and background to help make our town the best that it can be, and will welcome your suggestions.



**Donald L. Bergmann 226 8712**

**Answer:** Allen's Clam House: Construction of a "small clam shack" or demolition and simple park are fine. Complete resolution by April 1st. Action needed, present situation unacceptable. Ongoing maintenance crucial. Cockenoe Oyster Farm: I generally oppose "fish farming" and location here is problematic for sailing. Compo Beach/Dogs in Winter: Some rule changes to enhance appeal to

dog owners are worthy of study, e.g. permit early morning off leash play. Traffic/Noise/Trash: Small lots exacerbate problems. Visibility at intersections, stress beauty of beaches and commitment to cleanliness, consider no car days on Soundview Drive. Compo Beach Playground: Planned rebuilding must be tasteful. These "needs" affect Westporters with children, boaters, pooch people and water and fish food lovers, i.e. almost all of us who love our Town. **Background:** Westporter since 1979; two children through schools. Retired, former General Counsel U.S. Filter Corp. (NYSE). Colgate and Harvard Law School.



**Gordon Marshall Clark**

No response submitted



**William L. Scheffler**

**Answer:** Though I represent District 1, I believe that issues affecting only one district of the town are rare. Each district is part of the town, which, in turn, is part of our region. The committees on which I serve deal with issues, notably public protection and security, which often are best dealt with not only on a town basis, but regionally. I am interested in the concerns of constituents in this

district, but try to integrate them into a larger context. **Background:** I was first elected to the RTM in 1993: I have served on the Rules, Public Protection, and Education Committees, and currently chair the Planning and Zoning and Long Range Planning Committees. I also serve as one of Westport's representatives on SWERPA, the South Western Regional Planning Agency, and on the boards of several non-profit organizations.



**Ann Elizabeth Sheffer**

**Answer:** Westport functions as one community — just because the Beach or the sewage treatment plant is in a particular district doesn't mean that the needs of that district are unique. What is important is that everyone, regardless of district, feels that they can contact their RTM representatives and have their concerns and opinions listened to. Then, in the RTM, it is our responsibility to balance the

needs of various sectors of the community with the town as a whole, and make the best decisions we can.

**Background:** I have served on the RTM since 1993, and have served on the Finance, Education, Ordinance, and Library, Museum, and Arts Committees (which I chair.) I grew up in Westport, attended Westport schools (as did my children) and am involved in a number of community, arts, historical, service, and philanthropic organizations.



RTM District 1 residents vote at:

Saugatuck Elementary School cafeteria  
170 Riverside Avenue

**RTM — THE BUCK STOPS HERE!**

Why voting for Representative Town Meeting (RTM) candidates is so important...

Many people do not realize that the citizens of Westport who represent you on the RTM will:

- vote on every town request for appropriations in excess of \$20,000.
- vote on final approval of the town budget.
- write town ordinances.
- serve on one or more committees that review and make recommendations regarding appropriations and ordinances.

So, look to the lower right corner of the voting machine (see page 25, photo 3) for your RTM candidates; their ballot order was determined by lottery. You can vote for any four.

Check your mailbox for a postcard from the Registrar of Voters identifying your new voting district and polling place. Arriving this week!



## DISTRICT 2

Vote for any four

RTM

### LWV Question:

What are the particular needs of your district and how do they relate to the town as a whole?



#### Alice H. Shelton

**Answer:** Westport is a very special place — I'd like to keep it that way! To meet the needs of our district and the town, I would continue to advocate for: Excellence in education. Tax relief for senior citizens. Preservation of open space and residential character of neighborhoods. Fiscal responsibility. Careful consideration of proposed legislation. Long-range planning. **Background:** RTM Deputy

Moderator. RTM incumbent since 1997. Chair, RTM Ordinance Committee. Serve on several RTM committees: Ethics; Finance; Long-Range Planning; Information Technology; Library, Museum & Arts; Rules; School Building Administration. Recently reappointed by Diane Farrell to a third term on the Selectwoman's Committee to Study Tax Deferral and Tax Abatement for Senior Citizens. Former CPA (Price Waterhouse, International Tax Manager). Westport Historical Society board member and Y's Women Board member. Former PTA President. Former Service Learning Club Mentor. Former Cub Scout Leader. Member: WYWL, LWV, Friends of Library. Frequent community volunteer. Website: [www.sheltons.net/alice](http://www.sheltons.net/alice)



#### Gwen T. Campbell

**Answer:** As an RTM member, I can most directly impact careful review of town budgets and spending, knowing all of district 2 residents are concerned with Westport's ever growing tax burden. While Westport takes great pride in its school system, recreational facilities and beautiful natural setting, all this comes at a cost which must be carefully balanced with the need to be fiscally

responsible.

**Background:** BA: Colgate University; 12-year Westport resident; husband Jack; children: Aly (12 yrs), Hilary (11 yrs) and Matthew (8 yrs) attend Westport schools.



#### Lynn Abramson

**Answer:** There are several large tracts of land in District 2 currently slated for development. Westport's land use bodies need to examine the applications carefully in order to avoid overdevelopment while allowing the potential developers to proceed safely and responsibly.

Similarly, we need to implement a downtown plan which provides practical solutions while maintaining the character of our community. Using the same guidelines, we need to address the lack of affordable housing in Westport. I believe the biggest issue currently facing the town will be how to maintain our excellent level of services and our exceptional facilities while holding the line on expenses.

**Background:** Westport resident since 1992. Husband Alan. Children Samantha 16, Scott 13. Member of the RTM since 2001. Currently serving on the following RTM Study Committees: Employee Compensation; Health and Human Services; Library, Museum and Arts; Rules.



#### Mary Gordon Webber

**Answer:** District 2's primary needs are the town's needs and vice versa. We need to balance the preservation of Westport's quality of life essentials — excellent schools, open space, a diverse community responding to the needs of all age groups — with very real fiscal constraints. Planning and prioritization are key. With completion of major building projects: recreation;

senior center; and, especially, schools, we need to assure responsible maintenance and operating budgets. We need to confront the challenges of traffic, development, and downtown vitality. In these difficult economic times, vision, vigilance and creativity are essential.

**Background:** Chair, RTM Education Committee. Member, RTM Long Range Planning; Planning and Zoning; and Transit Committees. Former President Bedford PTA and Co-President PTA Council. Economist. Member various town committees. Active League of Women Voters; Boy Scouts. Westport resident 27 years.

### ADDITIONAL COPIES OF THIS GUIDE ARE AVAILABLE AT—

- Westport Public Library
- Town Clerk's Office
- Registrar of Voters Office



RTM District 2 residents vote at:

Kings Highway School cafeteria  
125 Post Road West

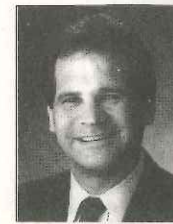
## DISTRICT 3

Vote for any four

RTM

### LWV Question:

What are the particular needs of your district and how do they relate to the town as a whole?



#### Brian Edgar Stern

**Answer:** I don't believe District Three has particular issues, but we have noticed that we've been last for repairs during power outages. Our issues are the town's issues. Westport's governance priorities are clear; sound public safety, excellence in education, careful town planning, and efficient public administration. Taxes have grown faster than

the population served, and there are serious issues with the quality of education. I intend to appropriately challenge the performance of our public officials who are responsible for the effective use of our town budget.

**Background:** Barbara (wife) and I became Westport residents in 1977, where we raised our fine three sons Doug, Andrew and Matt. We have two adorable little dogs Henry (13) and Lindsey (3). I am a Senior Vice President of Xerox. I like to think I am hard working, broadminded, and independent. I am told that I get too frustrated with redundant bureaucracy and am slightly stubborn.



#### Hadley C. Rose

**Answer:** For the most part the concerns facing the citizens of District 3 are similar to those of the rest of town. Offering our children a good education while being conscious of the impact of the BoE budget on those who do not have children in the school system. How to mix the inevitable growth of the town while trying to maintain the unique flavor of Westport. How to

keep the governing bodies of the town respectful of and responsive to the needs of all.

The one area where District 3 seems to differ with the rest of town is in the way CMS and CES seem to be taking the brunt of the one budget cut in the BoE budget, despite community opposition.

**Background:** 11 year resident. Children attend Staples and CMS. I've coached baseball and basketball in Westport for 10 years. Site supervisor with Habitat for Humanity for 8 years.



#### Helen A. Garten 227-7511

**Answer:** I am a 20 year Westport resident and a Princeton and Harvard graduate. As a tenured law professor at a public university, I understand the challenges of balancing educational excellence with fiscal responsibility. As an activist in land conservation in Connecticut, I understand the need to control development and preserve open space.

I believe that my District 3 neighbors, like all Westporters, want the RTM to do more to ensure that decisions on these issues are made in a fair, open manner. The RTM must function as the conscience of the community, exercising its oversight responsibility to insist that our town boards and commissions are accountable to the public. Further, individual RTM members must be responsive to their constituents. If elected, I will represent your interests, keep you informed of issues that come before the RTM, and make myself available to work with you on matters that concern you.



#### Janet B. Horowitz

**Answer:** Having lived in Westport for 32 years and raised my 3 children here I fully understand the issues that families and residents face in my district as well as the town as a whole — the preservation of Westport's quality of living. That is what first attracted me here and which will continue to attract others: a first class educational system; our beautiful natural environment; an

appreciation and promotion of the arts; and a variety of town wide recreational facilities and human services. With fiscal responsibility, I will help make Westport safer, smarter, richer, stronger, more diverse and humane, and better equipped to deal with these complex times now and in the future.

**Background:** Author, educator and publisher of mentoring and career education materials, including, "Picture This.... A Time Travel Activity Book of Westport".



#### William F. Meyer, III

**Answer:** As 4 term RTM member (being redistricted from 8 to 3 district) I'm chairman of the RTM Parks and Recreation Committee, and serve on Education and Health and Human Service committees. My main concern for Westport is that we maintain balance on quality of life issues, looking prudently and with common sense at educational budgets, administrative costs,

and property tax rates. Three decades in Westport (after living in 7 other states through business promotions) make me want to keep this a very special place. Have missed very few meetings in 8 year RTM commitment.

**Background:** 2003 Faces of Achievement honoree, Board of Directors of Westport Community Theatre, First Night, Westport Little League, (Bill Meyer softball field) and Y'S Men (Speaker chairman). Very active member of Sunrise Rotary, Saugatuck Congregational church, and mentor 10 year old Kings Highway Student.



RTM District 3 residents vote at:

Coleytown Middle School cafeteria  
255 North Avenue

**DISTRICT 4**

Vote for any four

RTM

**LWV Question:**

What are the particular needs of your district and how do they relate to the town as a whole?



**Wally Meyer**

**Answer:** A major problem for this District is speeding on narrow roads where there is much foot and bicycle traffic. But this is a problem that is common throughout Westport.

The unique problem of this District is the stewardship involved in protecting the Mill Pond. The Mill Pond is a Westport treasure that must be protected. I believe the First Selectwoman should appoint a Mill Pond Advisory Board. Its mission would include monitoring pollution, working with Parks & Rec on recreation usage, and evaluating commercial usage such as the proposed "clam shack" on the Allen's site. I will work with the First Selectwoman to ensure this happens.

**Background:** Fifteen years of service to Westport. Board of Selectman-4 years. Regional Planning Agency-1 year. RTM-10 years.



**Elizabeth Kuechenmeister**

**Answer:** District 4 has a population of 2797 residents, and I believe the needs of our district reflect the needs of the Town of Westport. As a current member of the Planning and Zoning Commission, I understand the need for environmental protection, and preservation of historic and cultural resources. Residential property values must be protected, commercial zones must not be expanded. Tax dollars must be spent wisely. We must continue to plan together how we want to shape Westport's future. Will listen carefully to the residents in District 4 and keep you informed.

**Background:** Have also served on the Baron's South Planning Committee, The Downtown Study, TAME, Parks and Recreation. Local chairman of annual Special Olympics "Penguin Plunge," Justice of the Peace. Manhattanville College (BA). Resident 21 years. Married to Karl (Staples '64); two children, Karl (Staples 2003), Britt (Staples 2006.)



**George Franciscovich**

**Answer:** Both the Town and District 4 are faced with the need to continue to meet the high expectations of our residents for our schools and Town services in challenging economic times. The children of Westport are our future and we need to provide for and protect them. We need to maintain our Town's high standards and make the necessary investments while limiting the impact of the increasing tax burden. We must continue to support the things that make Westport such a special place to live and raise a family.

As a member of the RTM's Education Committee I support the strong education programs for which the Town is justifiably proud. As the chair of the Finance Committee of the Charter Revision Commission I supported changes that made the Town's financial operations more efficient and transparent. I will continue to work hard to make Westport a Town to be proud of.



**Margaret K. McHenry**

**Answer:** As a second term RTM member, I'd like Westporters of 4 and all Districts to feel that they are well served by the RTM and that the process is fair and representative of the townspeople. I'd like to work towards greater awareness of Town issues and alternate proposals. I'd also like to see better Town budgeting of projects and greater fiscal scrutiny of spending. We have newly mandated four year property re-valuations which will generate tax increases every four years; I believe that our spending should be held within those limits.

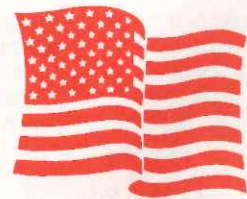
**Background:** Seeking a second term as an RTM member, currently employed in nursing and real estate brokerage. Mother of 4, Westporter for 12 years.



**Valerie S. Fischel**

**Answer:** The needs of District Four and those of Westport in general are inextricably linked. Anything that benefits District Four must also be good for Westport as a whole. My underlying goals in confronting all issues before the RTM will be to preserve the humane quality of life so cherished by all Westport residents. This includes, excellent schools, clean air, preservation of public spaces, traffic and noise reduction, ample recreational facilities and an abundance of cultural offerings. It is my belief, and, if elected to the RTM, will be my operating premise, that most Westporters are willing to balance the diverse needs of all inhabitants, so that everyone has an opportunity to flourish in this town.

**Background:** MA Counseling, Fairfield Univ. JD Quinnipiac School of Law. Divorce Counseling and Mediation, solo practice. Community Mediation, Dispute Settlement Center, Norwalk, CT.



RTM District 4 residents vote at:

Greens Farms School cafeteria  
(on lower level)  
17 Morningside Drive South

**DISTRICT 5**

Vote for any four

RTM

**LWV Question:**

What are the particular needs of your district and how do they relate to the town as a whole?



**Helmuth W. Krause 227 6471**

**Answer:** As an active member of the Green's Farms Association I have participated in maintaining the character of the neighborhood commensurate with the expectations of its residents. Due to the teamwork of our Association the needs of our district have been usually met by administrative process. It is my vision that this concept of cooperation and community

relations be projected to the town as a whole. As a forty-year resident of Westport and owner of a local service business, I consider myself having had exposure to local affairs over the years. **Background:** Born in Düsseldorf, Germany; exchange student through AFS; graduate electrical engineer from Aachen Polytechnic Institute; naturalized U.S. citizen; married to Lillian, with two grown children who attended Westport schools; Active member of St. Paul Lutheran Church, Westport.



**Richard A. Lowenstein**

**Answer:** Most District 5/Green's Farms residents are sandwiched between the Post Road and I-95. While not unique, our needs — magnified by this location — are to reduce traffic, speeding, road noise, and air pollution. As chair of the RTM Transit Committee, I am a strong advocate for improving public transportation to decrease traffic, especially to trains and work sites. In a

town as small as ours, however, district differences are minimal, even if the problems are large. My goal is to keep Westport as attractive for its longtime residents as it is appealing to prospective homeowners. I believe we can maintain superior services without spending extravagant sums.

**Background:** Twenty years in Westport. Besides Transit chair, member of RTM Employee Compensation and Public Protection Committees. Initiated effort to save the Green's Farms firehouse. Former Westport Library trustee and presently book-sales chair. Active in Got Noise! advocacy group. VP, Friends of Connecticut Libraries.



**Chris Grimm**

**Answer:** On RTM, I will address my constituents' concern with the lack of accountability in town government, which indirectly results in our increasing property taxes. While I appreciate the contributions of our current representatives, a more balanced, professional approach to town management, with less governance by hobbyists, will contribute to more effective and

accountable town management. I will also work on an improved plan for town growth — the seemingly unchecked development taxes *all* of Westport's resources. A more measured approach will help maintain and assure the continuing improvement of the quality of life that keeps us all here.

**Background:** I have a BS/MBA from Clemson University and have spent most of my career in sales management in publishing. I've lived in Westport the past eight years, commuting to New York. As a commuter, I appreciate the concerns of this substantial yet largely underrepresented segment of our community.



**John W. Booth**

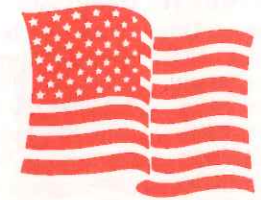
**Answer:** In most respects, the needs of residents in District 5 are similar to those of the town as a whole. What makes this district different is the combination of residential, commercial and civic entities. The residential properties predominate, and are divided between single family dwellings and condominiums. Commercial properties are divided between retail stores and office build-

ings, and are limited to the Post Road. Town properties include the recycling center, adjacent public works garage and a commuter parking lot on the Sherwood Island Connector, the Green's Farms fire station and nearby pump house, and the Green's Farms Elementary School. RTM Representatives for this area must guard against further encroachment of residential properties, if the area is to retain its residential character. I intend to do this, as I have done as an incumbent representative for the past eight years.



**Ralph Hymans**

No response submitted



RTM District 5 residents vote at:

Greens Farms School auditorium  
17 Morningside Drive South

**LWV Question:**

What are the particular needs of your district and how do they relate to the town as a whole?



**David Allen Wind**

**Answer:** The Town of Westport is coveted because of its geographic location and its residents. The school system and its unique capabilities to educate our children provide the underpinnings of our community and require more attention than it currently receives from existing elected officials if it is to reach its full capabilities. If elected, it is my intention to

focus on the way in which our tax funds are used in the education system, both in terms of physical plant and equipment and human resources. I am outraged, for instance, that a mold problem exists at Long Lots, where my three children attend elementary school. I am uniquely qualified to represent District 6 because of my formal education as an attorney and masters in finance and because I believe that Westport can be made an even better place to live. I am prepared to dedicate myself to this mission.



**Ronald F. Malone**

**Answer:** District Six needs are universal for the whole Town of Westport: obtaining needed services at the most reasonable cost. Education, Public Safety, Public Works, Recreation, Planning and Zoning, Conservation and all other aspects of Town Services have their place and demands. A slowing economy, job loss for many, and restrictions for those on fixed incomes all have an

effect on the ambition to continue the excellent services we receive. All voices have to be heard and new solutions sought. Improvements in accounting and purchasing practices has to continue. Life long successful experience at volunteerism, small business operations, and the police profession help me bring common sense and good judgment to the RTM, if re-elected.



**Velma E. Heller**

**Answer:** The concerns of each district affect all of us as Westporters. Among the issues that define and enrich our dynamic, community are: maintaining excellent educational and recreational programs and facilities, supporting quality professional police and fire departments, preserving and planning for open space; protecting our environment; implementing a

downtown plan that addresses esthetic, as well as traffic and safety needs. As your representative, I will strive to listen and make informed, decisions that provide quality services within the bounds of fiscal responsibility while balancing the needs all citizens: families with school children, empty nesters, seniors and those with fixed incomes or limited resources. **Background:** Active community member, 39 years; RTM District 6 Rep (2001-2003); Education and Health and Human Services Committees; LWV; School Building Committees; Westport Rotary; PTA Boards; Adjunct Professor, S.H.U.; Retired Westport principal, vice-principal, director and teacher; grandchildren attend Westport schools.



**Ann M. Flynn**

**Answer:** The needs of my district mirror the needs of this town that I love. Balancing the needs in the area of sewer systems, taxes, fiscal prudence, improve recreation facilities, traffic congestion and our working towards a total structure in our educational system so our children receive the best, are paramount. We should be aware of protecting our environment and securing open space when possible.

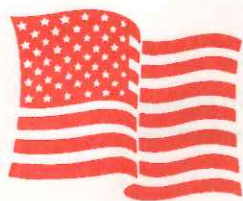
**Background:** 2003- Outstanding Women of Connecticut recipient. Co-ordinator Westport's jUNE Day, welcoming 450 visitors from the United Nations. Founder — Westport Animal Group (W.A.G.). RTM member for 2001-2003 — Presently on Parks & Recreation - Planning & Zoning - Library, Museum & Arts committees. COMMUNITY - Westport Girls Softball - Westport Community Theatre. President/Co-Founder — St. Elizabeth Ann Seton Society (Outreach program). 1956 Olympic and 1959 Pan-American team member/Committee to bring the 2012 Olympic Games to New York City. Thirty years International Shipping. Member Citizens Police Academy.



**Jo Ann W. Davidson 227-6185**

**Answer:** District 6 has neighborhoods of small homes, condominiums, and large houses. Families with children and retirees live here. Many of our roads are heavily travelled. There are brooks and ponds. So we share Westport's challenges and opportunities. We need to maintain our excellent schools and town services at the lowest possible cost. We need to preserve

our wetlands, open spaces and scenic views. We need affordable housing for our workforce and our seniors. Traffic must be controlled. The RTM studies and debates Town issues, and votes on every Town budget. Westport has a tradition of of lively, open discussion. We need to value consensus and take the long view for the future. I will listen fellow members and to my constituents and work hard to represent them. **Background:** Retired Westport teacher. Resident 47 years. Three children through Westport schools. Conservation Commission. Commission for Senior Services. Tree Board. League of Women Voters.



**RTM District 6 residents vote at:**

**Long Lots School gymnasium  
13 Hyde Lane**

**LWV Question:**

What are the particular needs of your district and how do they relate to the town as a whole?



**John E. Watson, III**

**Answer:** The most pressing need of my district is the remediation and renovation of the former Rose Farm next to Long Lots School, as a member of the Building Committee I have helped achieve this. Open government is important issue for the entire Town, Censorship by groups should be avoided. My experience as Vice Chair of the Zoning Board of Appeals and

School Building Committee member ensures my understanding of Town Government. **Background:** Life long resident of Westport, (Staples 1977, Michigan 1981, MBA Sacred Heart 1986) eight-year member of the Zoning Board of Appeals, eight-year member of a political Town Committee. Vice President, Columbia Investment Advisors, Stamford. Member, School Building Committee; Rotary Club of Westport, Minuteman Yacht Club, Lieutenant Commander USNR (Active Drilling Reservist); Treasurer, United States Navy League Western Connecticut Council; Chairman, The Marvin; Member Green Farms Congregational Church. Wife, Cheryl. Children Rebecca (11) and John (9) attend BMS & LLS.



**Lisa S. Rome**

**Answer:** As an RTM incumbent, I believe District 7's needs are similar to those of all of Westport, including: schools' long-range and safe transportation plan (LL and SHS especially) • neighborhoods' residential character protection • fiscal control of Staples construction project • seniors and youth activities enhancement • open space acquisition and preservation • residents' Health and Safety concerns coordination • prudent fiscal policies to contain our increasing tax burden.

**Background:** Fourth-term RTM Representative; Chair Health and Human Services; on Finance, Employee Compensation, and Rules Committees; Physician; Clinical instructor in Medicine, Yale; Selected for Public Issues Committee of American Society of Clinical Oncology; past Fairfield County Board ADL; LWV; Former Board of Directors, Domestic Violence Crisis Center; WYWL sustainer; past Little League Coach; B.A. M.Ed. Child Study, Tufts.



**Allen S. Bomes**

**Answer:** Improving traffic conditions at the schools is a particular need. The challenge is to reduce traffic bottlenecks around Staples and Bedford without using the traffic lights currently under consideration. I support additional turn lanes and extended use of police officers to reduce backups. Also, as a member of the School Building Committee, we are now addressing

traffic congestion and safety concerns at Long Lots School (caused by not having a separate bus loop from parent drop off). Improving the traffic flow will benefit everyone in town who drive near the schools. Finally, I support other quality of life issues such as preserving open space by cutting back on development throughout Westport. **Background:** Extensive budgeting, finance and accounting experience. Community service includes the School Building Committee (Staples, Long Lots Parking and Coleytown Middle Sub-Committees), baseball and softball coach, baseball commissioner, softball umpire coordinator and CFO/Treasurer of First Night Westport.



**John G. Klinge**

**Answer:** Traffic management is a major issue for District residents with the Staples construction project combining with Bedford Middle School to create severe traffic flow problems during morning commuting hours. Doubtless there will be a reopening of discussions about traffic lights on North Avenue and continued neighborhood meetings to determine methods of ameliorating the situation. P & Z recently approved partial use of Wakeman Fields for student/visitor parking at Staples that should reduce some parent drop-off volume.

Another school related issue is the need to implement an effective interim drop-off traffic plan to ensure student safety at Long Lots as the Town creates a new facility scheduled for September 2004. Clearly, on a town-wide level, the challenge is to maintain our quality of life at an affordable cost to all taxpayers. **Background:** RTM Education, Recreation, Public Works Committees since 1997 • Substitute teacher Westport schools • Engineering degree Cornell; Harvard MBA; US Navy '61 - '63 • Youth Mentor Program



**Stephen M. Rubin**

**Answer:** Clearly every district has special particular needs. Living near a school, drainage at the beach, not closing the Greens Farms firehouse and open space, to mention a few. I feel that an RTM member must represent the entire town and is simply elected by district. However it was my pleasure, after many years of work, to be part of the new parking lot at Long Lots

School in District 7. This will finally supply the safety of our children and efficiency of student transportation. District 7 has a very diverse group of residents and all must be represented and I feel I specifically did that during my previous RTM term and voting record. My 100% attendance records are something I am very proud of proving my dedication and commitment. I thank you all for your past support and hope to continue to serve you.



**RTM District 7 residents vote at:**

**Long Lots School gymnasium  
13 Hyde Lane**

## DISTRICT 8

Vote for any four

RTM

### LWV Question:

What are the particular needs of your district and how do they relate to the town as a whole?



#### Michael A. Rea

**Answer:** The most pressing need citizens of District 8 have is full representation on the RTM. On Election Day 2003, voters will find only three RTM candidates on the ballot for four seats. All legislative power of the Town (except as provided in Charter) reside with the RTM. Issues that impact our district; education, taxes, transportation, public works, safety and

environment are best served my citizens giving time to this important non-partisan elected body.

I am hopeful that readers of this Voter's Guide will consider writing in their name on the ballot to insure District 8 is fully served over the next two years.

**Background:** Westport native, married (Carla), three children. Incumbent, seeking third term. RTM Committee's: Chair-Environment, Member, Finance and Health & Human Services. Past: Chair-Bedford Middle School Building, Member Westport School Building Committee. Chairman-Westport Parks & Recreation Commission. Founder, President: Westport Sons of Italy & Festival Italiano.



#### Lois G. Schine

**Answer:** The current most important issue in District 8 is traffic. With four schools on North Avenue tremendous traffic is generated at school starting and ending times. Every district in town has concern about the rapidly increasing real estate taxes. The Long Range Planning Committee of the RTM should address this issue.

Preservation of Open Space wherever it still exists is important. The Belta Farm Tract is one area which should receive consideration. The Planning and Zoning Commission has yet to deal with the RTM Resolution asking them to designate Winslow Park as Dedicated Open Space. (The resolution was passed almost one year ago.)



#### Gordon F. Joseloff

**Answer:** Safety and traffic are primary concerns in District 8 as the home to Coleytown Elementary and Middle and with Staples and Bedford Middle nearby. Every effort must be made to ensure safe roadways and sidewalks in the area. At the same time, we need to do all we can to retain Westport's charm and character by providing superior services while keeping taxes

manageable. My long-term goal remains unchanged — to make tomorrow's Westport as good as yesterday's.

**Background:** Seeking seventh term. RTM Moderator and Deputy Moderator 10 years; former chair Education Committee; active community volunteer — fire, EMS, Historical Society; grew up in Westport; covered RTM as a reporter in 1960s; award-winning former CBS News and UPI foreign correspondent.



RTM District 8 residents vote at:

Coleytown Middle School cafeteria  
255 North Avenue

IT DOESN'T END IN THE VOTING BOOTH...

AS YOUR REPRESENTATIVES, RTM MEMBERS NEED YOUR INPUT; WRITE OR CALL THEM WITH YOUR CONCERNS, OPINIONS AND SUGGESTIONS.

**RESPONSIBILITIES OF RTM MEMBERS** include voting on appropriations made by the Board of Finance and writing ordinances for the town. Members also serve on one or more RTM committees. RTM members attend one or more meetings a month and are responsible for specific concerns of their district and for the welfare of the town. Meetings of the RTM are open to the public.

## DISTRICT 9

Vote for any four

RTM

### LWV Question:

What are the particular needs of your district and how do they relate to the town as a whole?



#### Jorgen F. Jensen

**Answer:** Major changes for the downtown area have been proposed including a parking garage and improved access to the river. The downtown area is one of Westport's jewels and we must strive to make it an accessible and exciting place to visit but we must maintain the small town atmosphere. The proposed pathway to Winslow Park from Evergreen Avenue is quite

treacherous and we need better access. Completion on time and on budget of Staples High School, Long Lots Parking lot and the Senior Center are key issues for the town.

**Background:** Chairman, RTM Public Works Committee; member, RTM Finance, Environment and Long Range Planning committees. 40-year town resident.



#### Joe Mioli

**Answer:** The 9th RTM district is the most challenging district in Westport, it includes: The Westport Library, Town Hall, the senior center, Winslow Park, Baron South, YMCA, the downtown businesses and the Westport Playhouse. At least one of these places appears on the agenda of every meeting of the RTM. I favor the Historical Society proposal for the downtown

Historical District. I like a pedestrian type mall on Main Street. We must find a new home for the YMCA. Possibly the Westport Playhouse will offer some performances at Bedford Middle School. We must keep Winslow Park as open space. I will serve the interests of my district. To summarize everything that happens in the 9th RTM district directly affects our town and its image.

**Background:** In 1968, Mel and I opened the Westport Pizzeria, from which I retired last year. I live on Main Street and know Westport's problems.



#### Michael A. Gilbertie

**Answer:** Because district nine encompasses down town Westport, I feel that the major issue I will be facing on the R.T.M. is the proposed further development of the down town area. This proposed development will have a major impact on the Town as a whole. **Background:** Born in Westport, a lifelong resident 63+ years. Graduated Staples 1958. Served on the R.T.M. 2000

and 2001 with perfect attendance record. Have two children who went through the Westport School System then on to college, Brian received a Masters in Music Ed and is a Teacher at Kennedy Junior High in Woburn Mass. for nine years. Married. Linda received B.S. in Business Management, worked in Manhattan six years, married with two children. Also, President of The Westport Lions Club two terms, 1984-1986. Member of The Westport Y.M.C.A. 1957 to present. Member Y's Men 2003. Member Church of the Assumption lifetime, and Member



#### Marla J. Cowden

**Answer:** I am extremely pleased to seek my second RTM term in the new 9th District — "the heart of Westport". People come to District 9 — Downtown and Post Road shopping, the Library, the Y, Town Hall, the Post Office, the Levitt and Playhouse, to over ten parks including Winslow and Baron's and soon, to the new Center for Senior Activities. People pass through, it includes

three major feeder roads to the main train station. Most importantly, people live here. We're a densely populated district, living close to neighbors on properties quite small compared to many districts. The 9th needs careful planning of usage to maintain quality of life for those who come to and pass through and, most importantly, those who live in the 9th.

**Background:** Retired CPA married native Westporter Edward. Sons, Peter, 12 and Ned, 3. Current RTM member. Saugatuck Nursery School BOD. Former PTA and PTA Council Co-President.

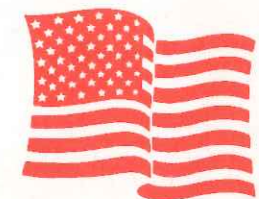


#### Kim Mathias

**Answer:** District 9 is the heart of Westport. Main Street, Town Hall, the Senior Center, Winslow Park, Westport Public Library, Toquet Hall and the police station are within our borders. Events in our district impact all Westport residents. A solid business community is vital to Westport's economic base. The Downtown Plan seeks to make this area even stronger and busier. Traffic

impact must be considered. We must be fiscally responsible as we seek to maintain the level of service, educational standards and quality of life we enjoy. Choices must be made. I want to know your views and bring them to the RTM.

**Background:** My legal and business background, and my experience with Westport issues as Assistant Town Attorney, on the Youth Commission and in public service, have prepared me well to serve on the RTM. Married to Mark Mathias. Our daughter attends Saugatuck Elementary. I welcome the opportunity to represent you.



RTM District 9 residents vote at:

Saugatuck Elementary School cafeteria  
170 Riverside Avenue

## MECHANICS OF VOTING FIRST TIME VOTERS — VOTE WITH CONFIDENCE

- Enter booth and pull handle to the right to close the curtains and activate the machine. (See **photo 1** on the facing page).
- Make your selections for candidates by pushing the lever down over the name of your choice for that office.
- You can change your lever vote as many times as you like before pulling the handle back to the left to open the curtains. (This is not true of “write-in” voting; see instructions below.)
- **“Write-in” Candidates** can be entered in the space shown in **photo 2** on the facing page.  
“Write-in” Voting: Use the pencil that hangs from a string in the left corner of the voting booth. Lift the clear sliding cover and “write-in” the name of your candidate. Be sure you are lifting the cover above the office for which your candidate is running. Once you lift the sliding cover for a “write-in” space, a vote is registered even if you do not write anything in the space. Therefore, you cannot change your vote from a “write-in” back to a lever selection once you have raised the sliding “write-in” cover.
- **RTM Candidates:** In years where candidates for the RTM are running for election, you will need to look to the bottom right of the candidate panel (indicated in **photo 3** on the facing page) to find them listed (ballot position chosen by lottery). Some voters forget to select their RTM choices because the RTM position is not highly visible and is easily overlooked.

**If you have any questions or need help, ask the booth attendant to bring the moderator to you before you enter the booth. This is your right and you are not inconveniencing anyone.**

- When you have finished selecting your candidates, **leave the levers in the down (selected position)**. When you pull the handle back to the left to open the booth curtains, your vote is registered by the machine and the levers automatically reset for the next voter.

**If you are uncertain where you should be voting, contact the Registrars of Voters at 341-1115.**

## MECHANICS OF VOTING

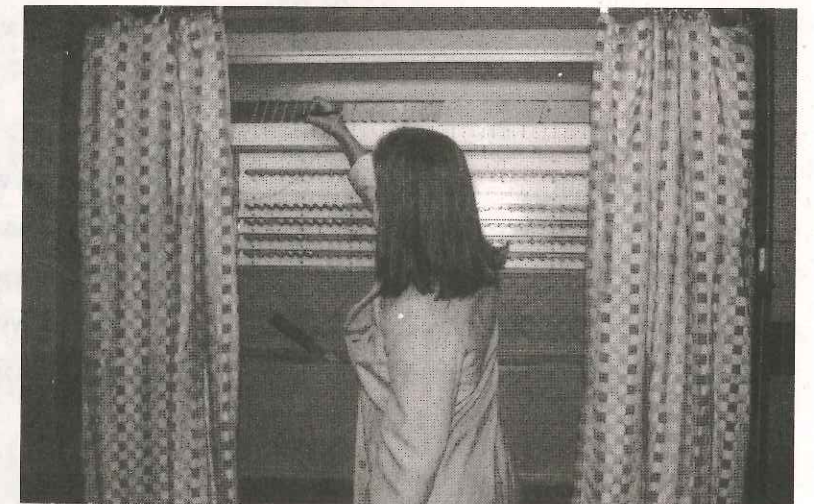
**Photo 1**

**Pull handle to right to close the curtain.  
Pull handle to right to open the curtain and to register your voting selections.**



**Photo 2**

**“Write-in” candidate area.**



**Photo 3**

**RTM candidates are listed in lower right hand corner.**



## VOTER INFORMATION WEB SITES

League of Women Voters of Westport <http://www.lwwestportct.org>

All of these links are available live on our website.

LWV-National <http://www.lwv.org/>  
 LWV-US DemocracyNet <http://www.dnet.org/>  
 LWV-Connecticut <http://www.lwvct.org/>  
 LWV-CT Directory of Connecticut's Federal and State Elected Officials  
<http://www.lwvct.org/elibrary/html/Directory/index.htm>

### LOCAL

Town of Westport <http://www.ci.westport.ct.us/govt/default.asp>

### STATE

State of Connecticut <http://www.ct.gov/>  
 Connecticut General Assembly <http://www.cga.state.ct.us/>  
 Representative Kenneth Bernhard (District 136) <http://www.housegop.state.ct.us/pages/Bernhard.htm>  
 Representative Cathy Tymniak (District 133) <http://www.housegop.state.ct.us/pages/Tymniak.htm>  
 State Senator Judith G. Freeman (District 26) <http://www.senatereps.state.ct.us/senainfo/Freedman.htm>

### NATIONAL

President George W. Bush <http://www.whitehouse.gov/>  
 Senator Chris Dodd <http://www.senate.gov/~dodd/>  
 Senator Joe Lieberman <http://www.senate.gov/~lieberman/>  
 Representative Christopher Shays <http://www.house.gov/shays/>

### OTHER USEFUL SITES

Project Vote Smart <http://www.vote-smart.org/>  
 Rock the Vote <http://www.rockthevote.org/>

## SAMPLE BALLOT

OFFICES	1	2	3	4	5	6	7	8	9	10	11	12	13	14	15
REPUBLICAN	1A R. Gavin S. Anderson	2A Thomas C. Bloch	3A Ralph Hyman	4A Charles W. K. Habonstoh	5A Edward M. Bowers	6A Lennis D. Bray	7A	8A Gerson F. Heller, Jr.	9A Sean M. Timmins	10A Helen Marian Block	11A James R. Cochran	12A David B. Prese	13A Elizabeth Wong	14A Duane Nelson	15A
DEMOCRATIC	1B Steven L. Ezzes	2B Kevin A. Connolly	3B	4B	5B Mark H. Mathias	6B Mary R. Parmelee	7B	8B	9B Eleanor S. Lawrenstein	10B	11B	12B	13B James C. Ezzes	14B	15B
SAVE WESTPORT NOW	1C	2C	3C	4C	5C	6C	7C	8C	9C Eleanor S. Lawrenstein	10C	11C	12C	13C	14C	15C
PETITIONING CANDIDATES	1D	2D	3D	4D	5D Stephen M. Rubin	6D Robert Hile Andrew	7D Robert M. Chasin	8D	9D	10D	11D	12D	13D	14D	15D
	1E	2E	3E	4E	5E	6E	7E	8E	9E	10E	11E	12E	13E	14E	15E

Representative Town Meeting  
 Row "E" — Vote for four

Candidate Name

- 1.
- 2.
- 3.
- 4.

**YOU MAY TAKE THIS GUIDE WITH YOU INTO THE POLLING PLACE.**

The League of Women Voters owes many thanks to Patricia Strauss, Town Clerk, for her help with this Guide.

# 2003 Voter's Guide

The publication and distribution of this Voter's Guide  
was made possible by:

## Newman's Own

and numerous individual donations  
to the League of Women Voters of Westport  
and the LWVUS Education Fund



**You May Take This  
Guide With You Into  
the Polling Place**



League of Women Voters  
of Westport

P.O. Box 285, Westport, CT 06881

Non Profit Organization  
US Postage Paid  
Permit #110  
Westport, CT  
06880